

Diagnostic Exercise

From the CL Davis/SW Thompson Foundation

Case # **264**; Month: **July**; Year: **2024**

Contributors: Carmen García-Romero,^{1*} Elena Colombino,¹ Arturo Oliver-Guimera,¹ Agustín Barragán,¹ David Viana,¹ Juan Manuel Corpa,¹ Joaquín Ortega,¹ Laura Selva,¹ Francisco A. Uzal,² Estefania Montero.¹

¹ Veterinary Pathology Service. School of Veterinary Medicine, Department of Animal Production and Health, Public Veterinary Health and Food Science and Technology, Universidad Cardenal Herrera-CEU, CEU Universities, Valencia, Spain.

² California Animal Health and Food Safety Laboratory System, San Bernardino Branch, School of Veterinary Medicine, University of California-Davis, San Bernardino, CA, USA.

***Corresponding author:** carmen.garciaromero@uchceu.es

Clinical history: A 6.5-year-old spayed female domestic toy rabbit (*Oryctolagus cuniculus*) presented with a history of apathy, weight loss for approximately 2 weeks and paralysis of both hind limbs. Due to the worsening of its condition and poor prognosis, the rabbit was euthanized.

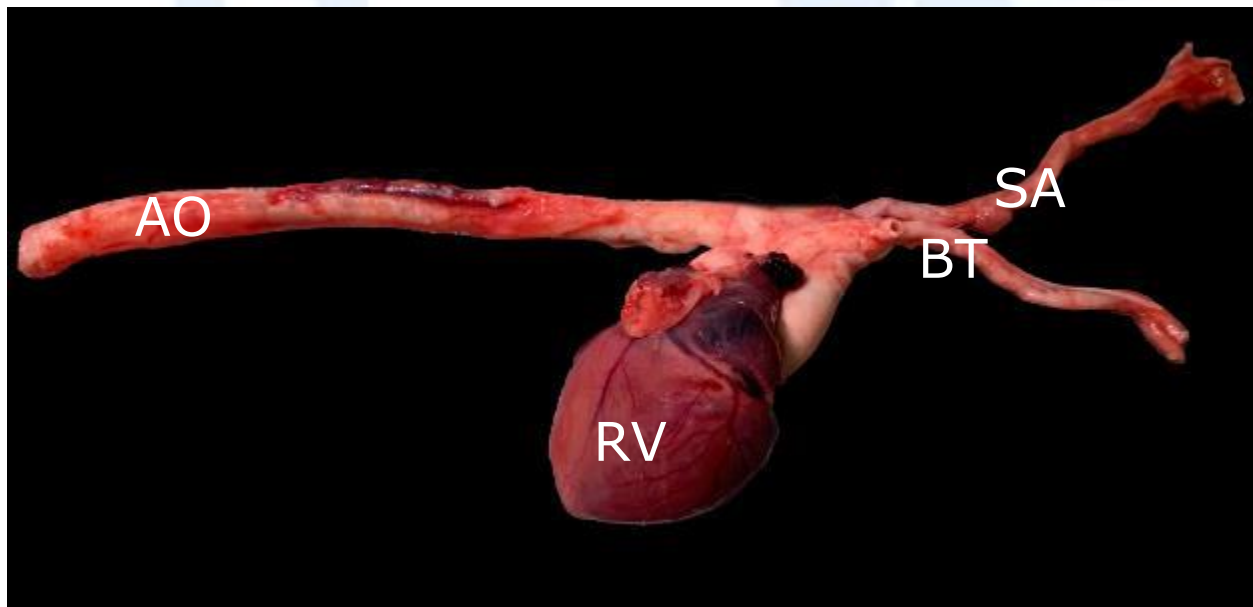


Figure 1. AO, aorta; RV, right ventricle; BT, brachiocephalic trunk; SA, subclavian artery.

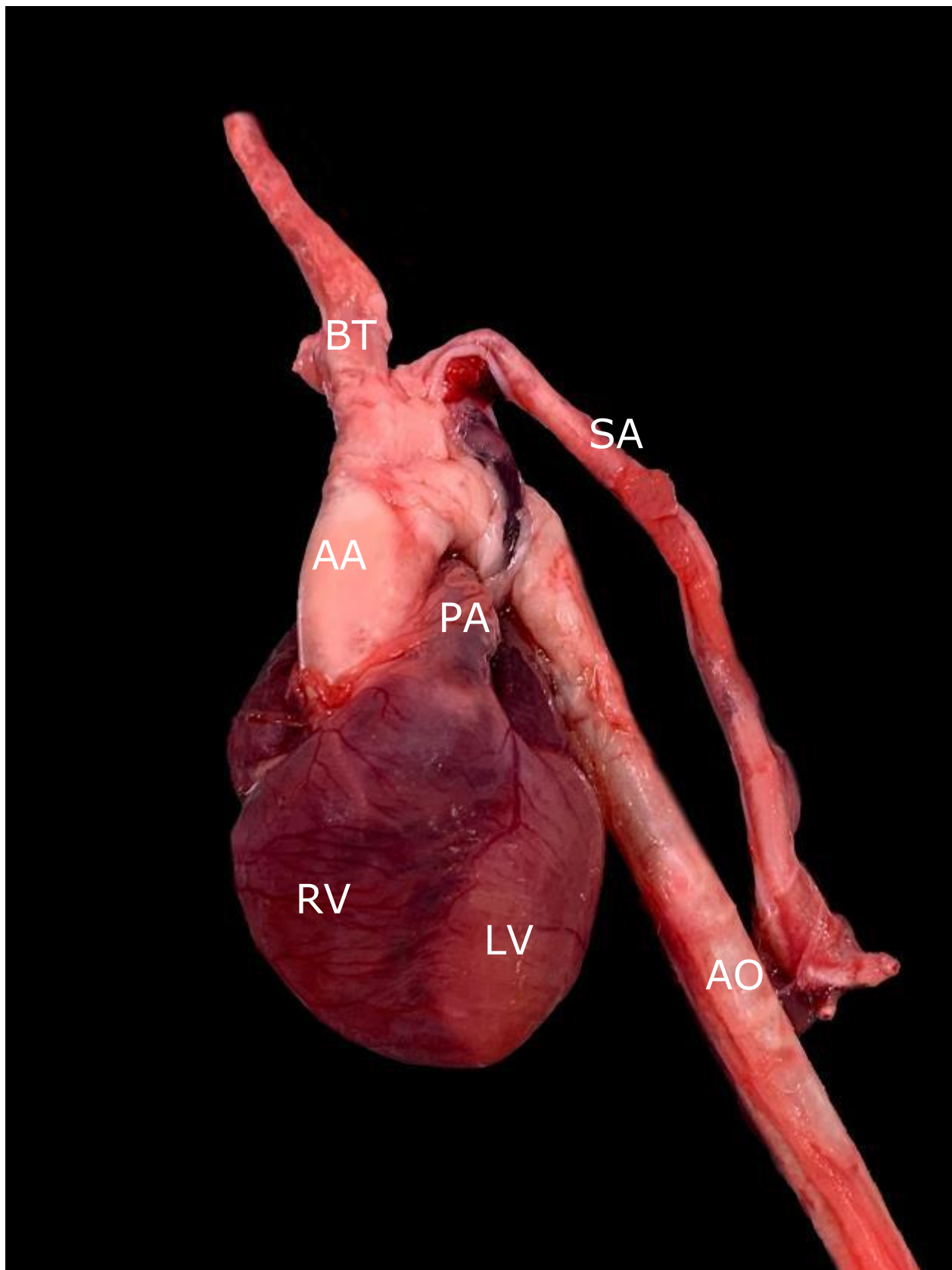


Figure 2. RV, right ventricle; AA, aortic arch; BT, brachiocephalic trunk; PA, pulmonary artery; LV, left ventricle; SA, subclavian artery; AO, aorta.



Figure 3.

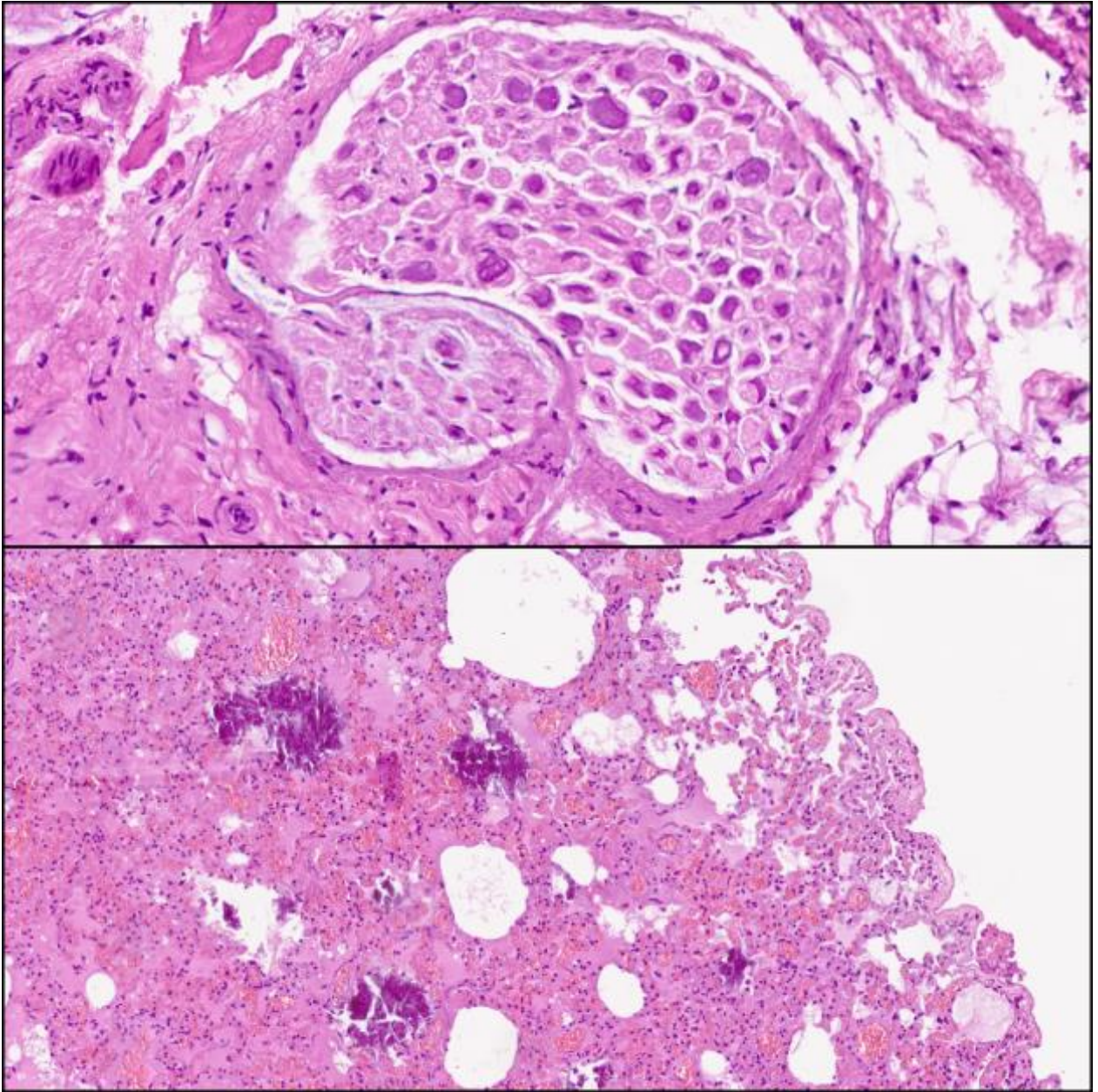


Figure 4.

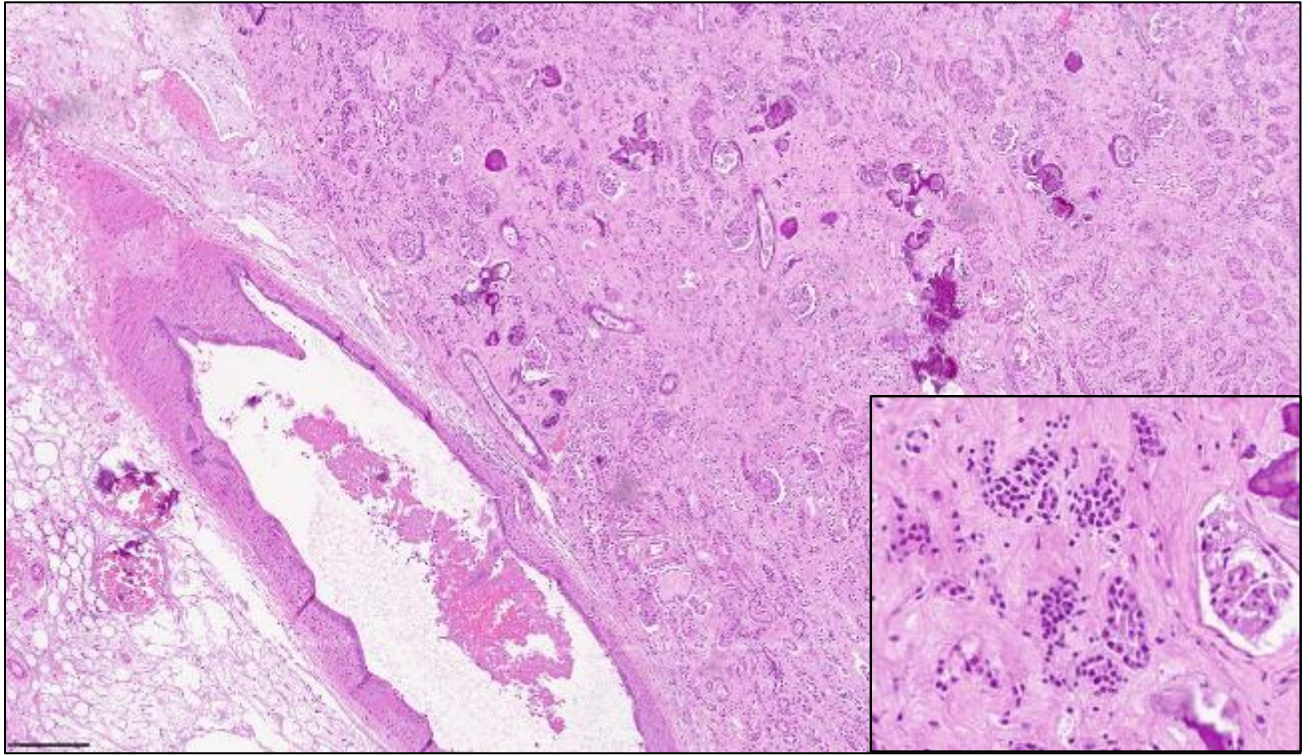


Figure 5.

Follow-up questions:

- Histological description
- Morphologic diagnoses
- Name of the condition
- Special stains you would use for diagnosis

*The Diagnostic Exercises are an initiative of the Latin Comparative Pathology Group (LCPG), the Latin American subdivision of The Davis-Thompson Foundation. These exercises are contributed by members and non-members from any country of residence. Consider submitting an exercise! A final document containing this material with answers and a brief discussion will be posted on the CL Davis website (<https://davisthompsonfoundation.org/diagnostic-exercise/>).

Associate Editor for this Diagnostic Exercise: Francisco Uzal
Editor-in-chief: Claudio Barros