



Diagnostic Exercise

From the CL Davis-SW Thompson Foundation

Question Sheet

Case #: **175**; Month: **October**; Year: **2021**

Contributors: Nicolás Streitenberger DVM, PhD, Javier Asin, DVM, PhD, Dipl. ECVP, Mauricio A. Navarro DVM, MSc, PhD, and Francisco A. Uzal, DVM, MSc, PhD, DACVP. California Animal Health and Food Safety Laboratory System, San Bernardino Branch, University of California, Davis, San Bernardino, CA, USA. fauzal@UCDAVIS.EDU

Clinical History: Two 18-month-old female bison and a heifer died suddenly in the same ranch. The three animals were submitted for postmortem examination and diagnostic workup. The changes of one of the bison are presented here.

Necropsy Findings: The carcass was in fair nutritional condition, with small amount of fat reserves, but still well fleshed, and in mild state of post-mortem decomposition. There was a small amount of clotted dark-red blood in the nostrils and anus. The heart presented extensive sub-endocardial hemorrhages in all four chambers. These lesions were most pronounced in both ventricles where they extended deep into the underlying myocardium (Figs. 1 and 2). The mucosa of the abomasum was diffusely and mildly congested, and the mucosa of the small and large intestine was diffusely and severely congested (Fig. 3). There was a moderate amount of red fluid in the lumen of the small intestine, cecum, and colon. Both lungs had a few, small, well-delineated, deep, firm, multifocal dark-red areas in all pulmonary lobes, but lung tissue samples floated when placed into formalin.

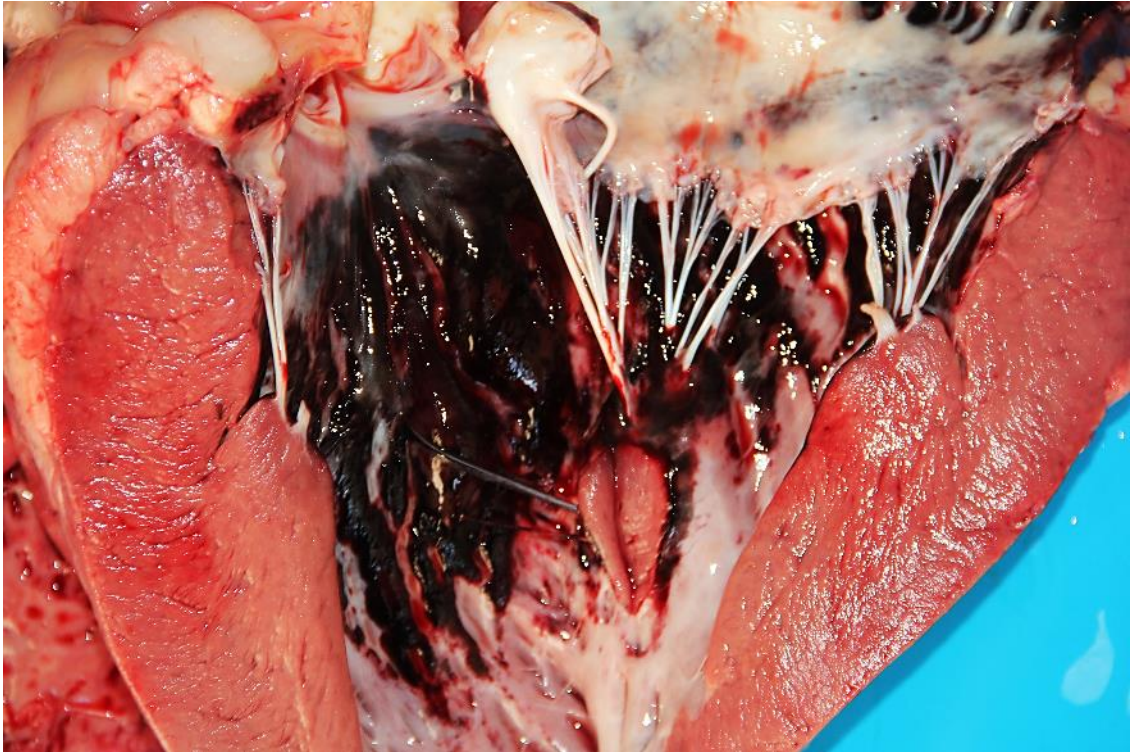


Figure 1.

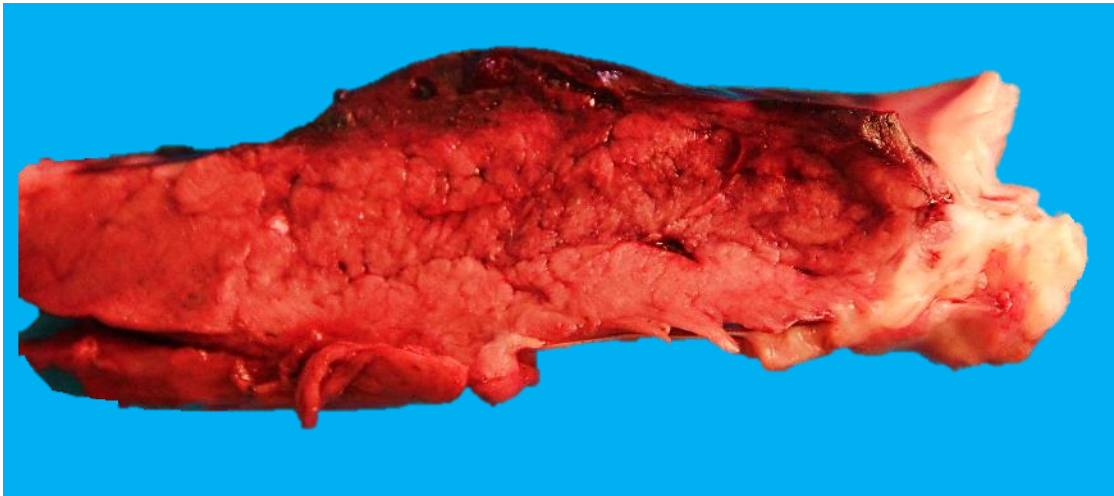


Figure 2.



Figure 3.

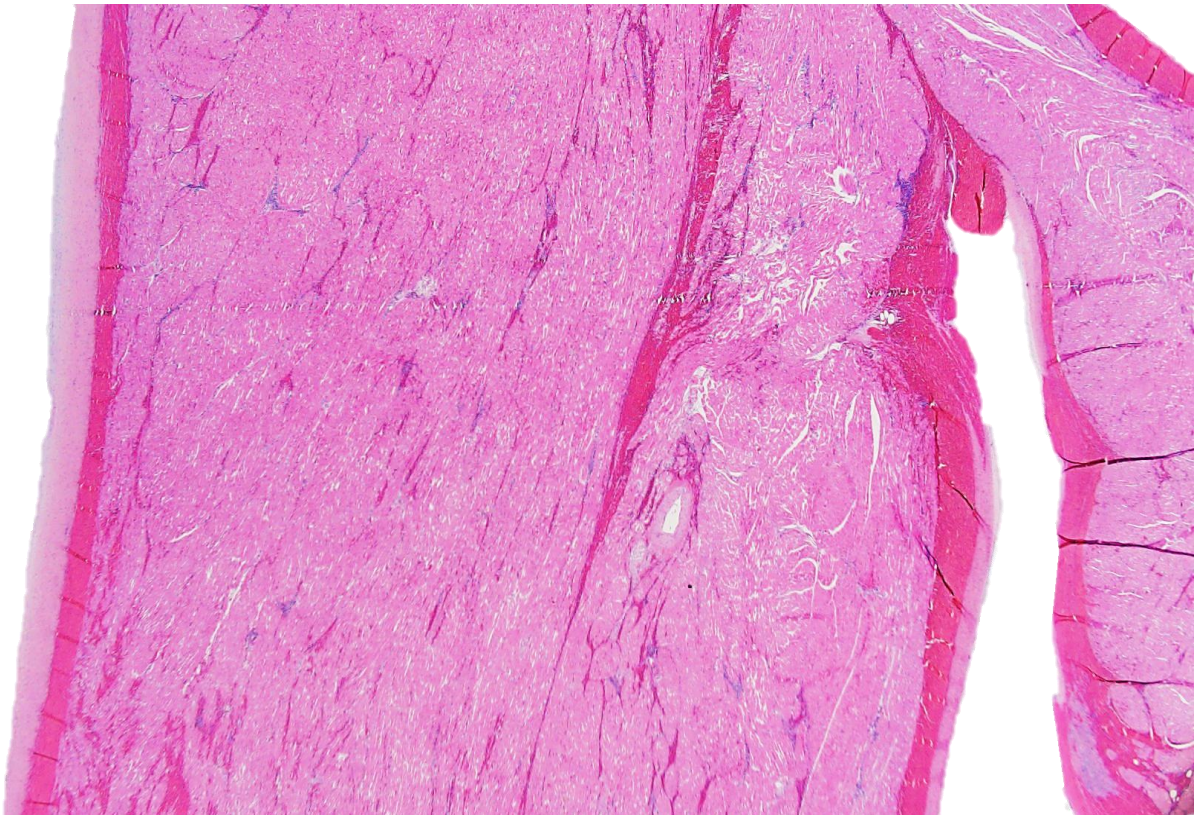


Figure 4. HE

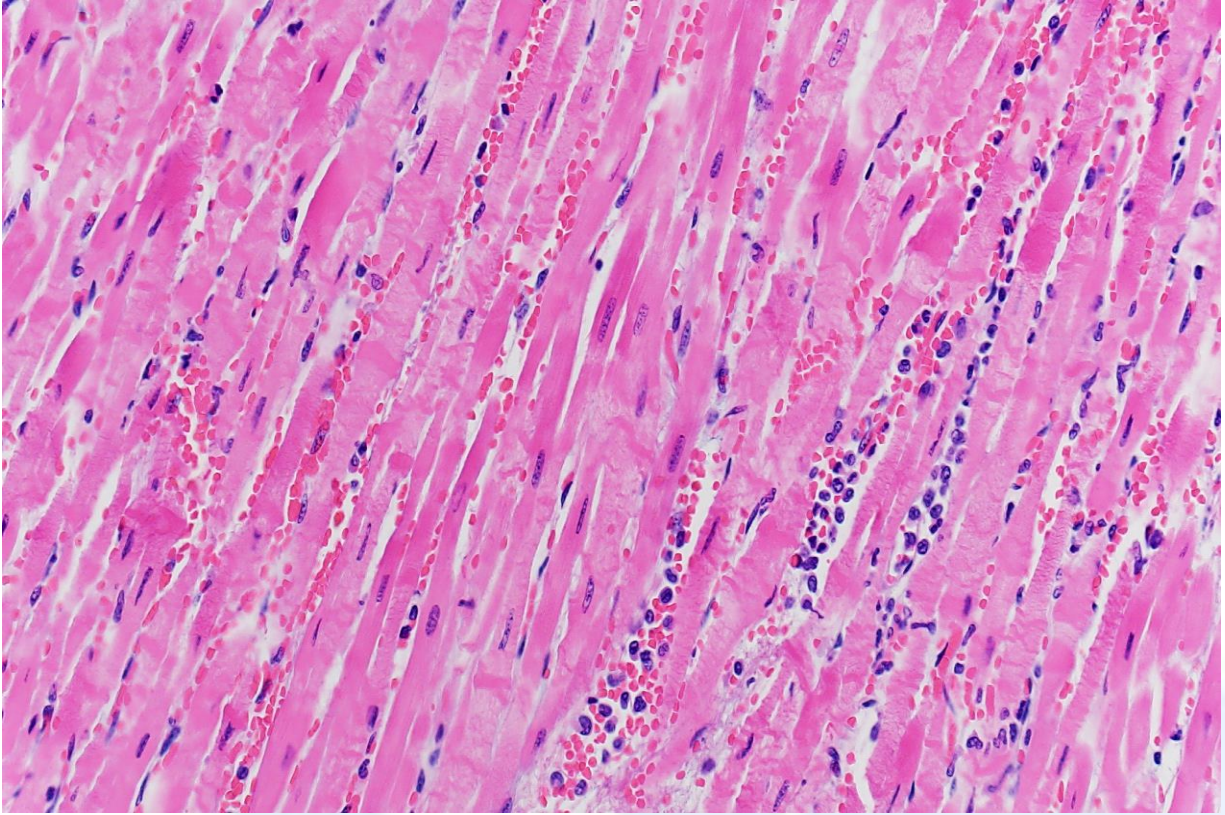


Figure 5 HE

Follow up questions:

- 1- Microscopic description*
- 2- Morphologic diagnosis*
- 3- Most likely etiology*

The Diagnostic Exercises are an initiative of the **Latin Comparative Pathology Group (LCPG)**, the Latin American subdivision of The Davis-Thompson Foundation. These exercises are contributed by members and non-members from any country of residence. Consider submitting an exercise! A final document containing this material with answers and a brief discussion will be posted on the CL Davis website (http://www.cldavis.org/diagnostic_exercises.html Editorial Committee.

Associate Editor for this Diagnostic Exercise: Francisco A. Uzal
Editor-in-chief: Claudio Barros

