



# Diagnostic Exercise

## From the CL Davis/SW Thompson Foundation

Case #: **273**; Month: **November**; Year: **2025**

### *Question Sheet*

**Title:** Xanthogranulomatosis in an eclectus parrot

**Contributors:** Carmina Migoni<sup>1</sup>, Michelle Rubio Sánchez<sup>2</sup>, Francisco A. Uzal<sup>3</sup>, Javier Asin<sup>3</sup>, Eileen Henderson<sup>3\*</sup>.

<sup>1</sup>Instituto de Investigaciones en Ciencias Veterinarias, Universidad Autónoma de Baja, California, México.

<sup>2</sup>Facultad de Medicina Veterinaria y Zootecnia, Universidad Nacional Autónoma de México, México.

<sup>3</sup>California Animal Health and Food Safety Laboratory System, San Bernardino branch, University of California-Davis.

**\*Corresponding author:** [eehenderson@ucdavis.edu](mailto:eehenderson@ucdavis.edu)

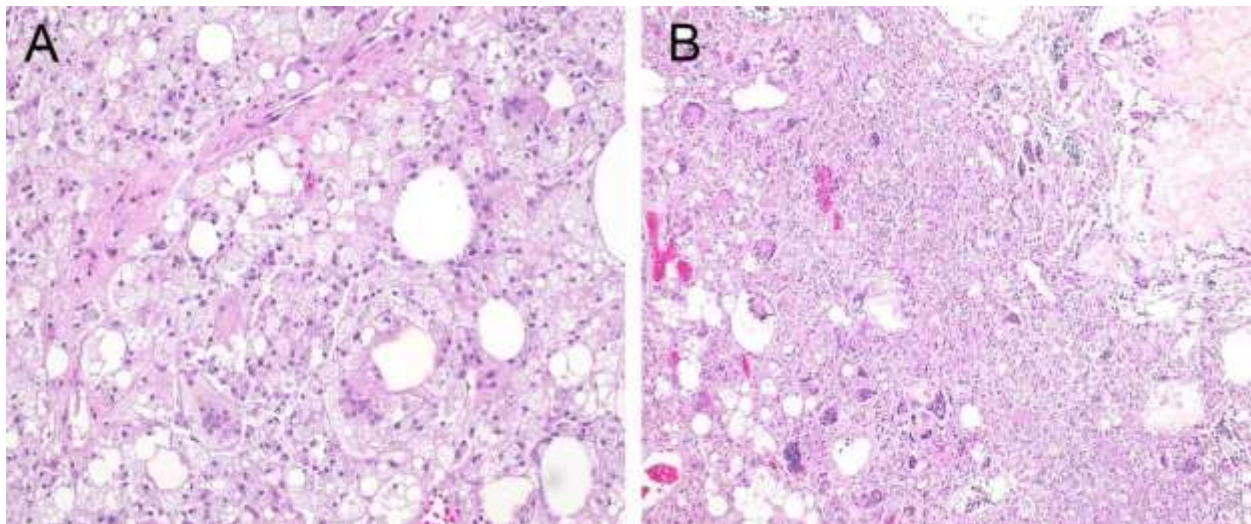
**History:** A 14-year-old female eclectus parrot was submitted for necropsy with a history of abdominal distension and weight gain.

**Necropsy findings:** The carcass was in good nutritional condition, with prominent pectoral musculature and abundant coelomic fat deposits. Dark red clotted blood was present within the anterior portion of the coelomic cavity and adhered to both the capsular surface of the liver and the pleural surface of the lungs. The liver was mottled red to tan, friable, and had rounded edges. Within the caudal half of the abdomen, there was a 5.5 cm x 5 cm x 2.5 cm black/grey to yellow, soft mass (Fig. 1) with multiple fluid filled cysts.

**Gross and Histological Images:**



**Figure 1**



**Figure 2**

**Follow-up questions:**

- *Morphologic diagnosis*
- *Microscopic description*
- *Name the disease*

The Diagnostic Exercises are an initiative of the Latin Comparative Pathology Group (LCPG), the Latin American subdivision of The Davis-Thompson Foundation (DTF). These exercises are contributed by members and non-members from any country of residence. Consider submitting an exercise! A final document containing this material with answers and a brief discussion will be posted on the DTF website

(<https://davisthompsonfoundation.org/diagnostic-exercise/>).

**Associate Editor for this Diagnostic Exercise:** Francisco A. Uzal

**Editor-in-chief:** Claudio Barros