

DIAGNOSTIC EXERCISE

From The Davis-Thompson Foundation*

Case #: **239**; Month: **June**; Year: **2024**
Question Sheet

Contributors: Adriana L. Stigger¹, David Driemeier², Ana L. Schild³, Rafael P. Lima², Fernanda F. Perosa², Irene Guterra¹, Allanis M. Silveira¹

¹Laboratory of Veterinary Pathology, Centro Universitário da Região da Campanha (Urcamp), Alegrete, RS, Brazil

²Setor de Patologia Veterinária, Faculdade de Medicina Veterinária, Universidade Federal do Rio Grande do Sul (UFRGS), Porto Alegre, RS, Brazil.

³Laboratório Regional de Diagnóstico (LRD), Faculdade de Veterinária, Universidade Federal de Pelotas (UFPEL).

Corresponding author: davetpat@ufrgs.br

Clinical History: In October (spring), on a farm in southern Brazil (29° 47' 02" S 55° 47' 28" W), 84 10 to 12 months old mixed breed calves out of a herd of 120 presented anorexia, weight loss, cough, respiratory distress, dyspnea, and serous nasal discharge. Some calves had open-mouth breathing, with extended necks and altered stance (with their forelimbs apart, in an "air-hunger" posture). Mortality was reportedly "high", though the exact number of deaths was not mentioned. Two of the dead calves were submitted for necropsy (Figs. 1-4).



Figure 1.



Figure 2.

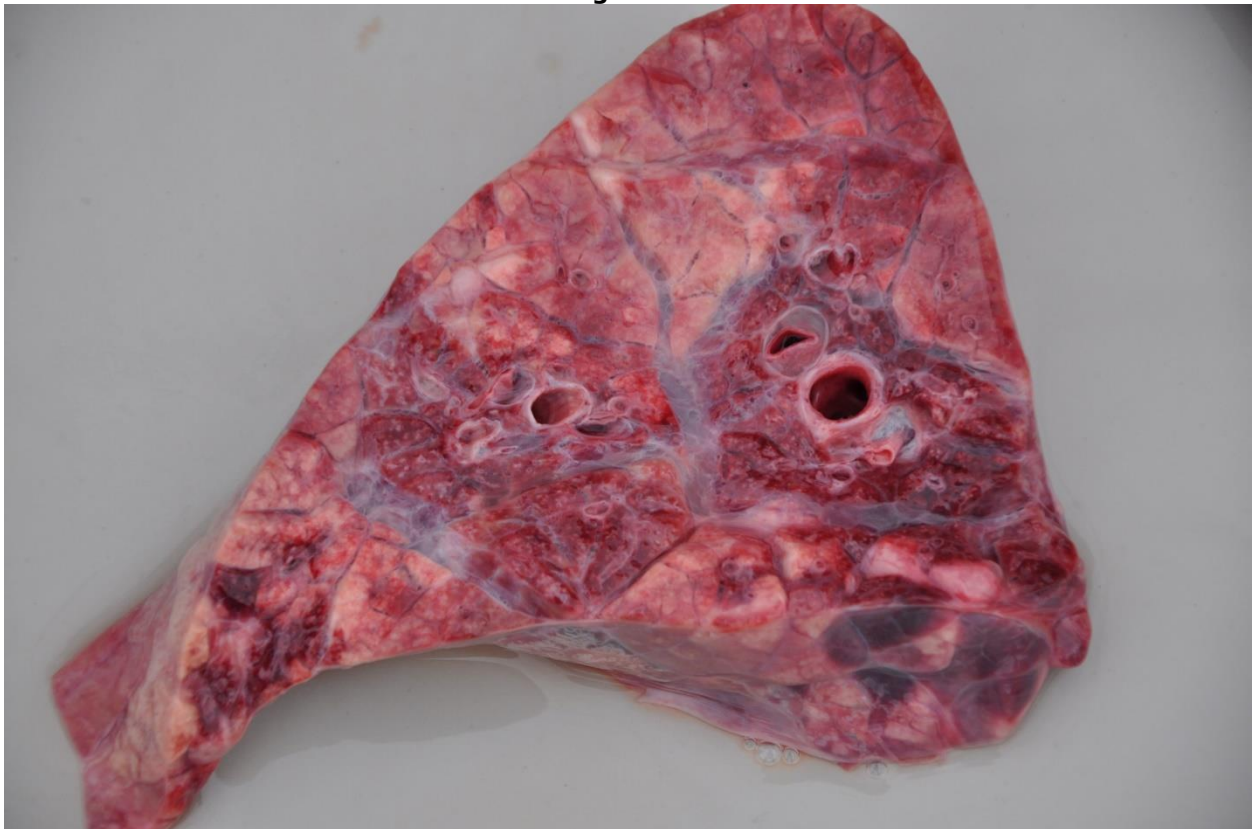


Figure 3



Figure 4.

Follow-up Questions:

- *Morphologic diagnosis*
- *Etiologic diagnosis*
- *Differential diagnoses*

The Diagnostic Exercises are an initiative of the Latin Comparative Pathology Group (LCPG), the Latin American subdivision of The Davis-Thompson Foundation (DTF). These exercises are contributed by members and non-members from any country of residence. Consider submitting an exercise! A final document containing this material with answers and a brief discussion will be posted on the DTF website (<https://davisthompsonfoundation.org/diagnostic-exercise/>)

Associate Editor for this Diagnostic Exercise: Ingeborg Langohr
Editor-in-chief: Claudio Barros