

## Diagnostic Exercise

### From The Davis-Thompson Foundation\*

Case #: **189**; Month: **May**; Year: **2022**  
Question Sheet

**Contributors:** Andrew Oates DVM, Samantha Darling, DVM, April Choi DVM, PhD, DIP ACVP (email to [andrew.oates@colostate.edu](mailto:andrew.oates@colostate.edu))

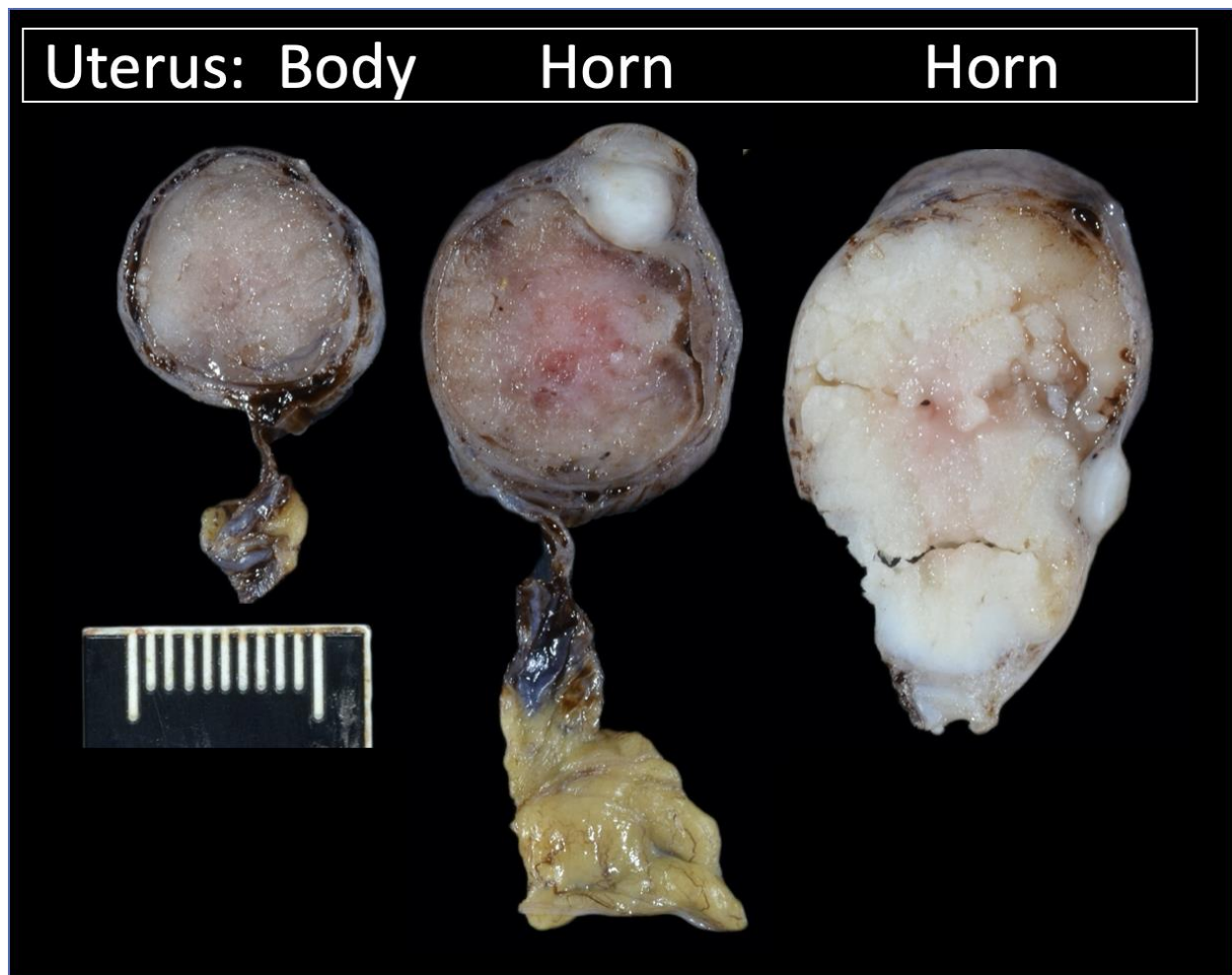
**Clinical History:** The tissue is from a 3-year-old female intact Guinea Pig (*Cavia porcellus*) with a 9-month history of increased aggression and mounting behavior. On physical examination, the patient had bilateral patchy caudal alopecia, bilateral hyperkeratotic nipples, and soft, round structures palpated within the cranial abdomen. Additional findings include hematuria and mild to moderate hyperfibrinogenemia. A hysterectomy was performed and the reproductive tract submitted for evaluation.

**Gross Findings:** Uterus, the bicornuate uterus is markedly enlarged with the uterine body measuring 0.3 cm x 1.5 cm x 2.5 cm and the uterine horns ranging up to 2-3 cm in diameter. Bulging from the serosal surface of the uterine body are two nodules of similar appearance which are pale tan, smooth, raised, and approximately 0.3 cm in diameter. On section, the masses extend transmurally across the uterine wall. Extending from the serosal surface of one uterine horn, 3 cm from the uterine body-uterine horn junction, is a similar mass which has a stellate pattern. The lumen of the uterine body/uterine horns in this region is almost completely obstructed with firm, irregular, friable, pale tan tissue which is fissured with spaces filled with pink to dark brown, gelatinous to mucoid fluid.

**Ovaries:** The ovaries are enlarged and their surface bossylated, measuring 2 cm x 0.6 cm x 0.5 cm and 1.2 cm x 1.7 cm x 0.6 cm in diameter. On cut section, the ovarian



parenchyma is replaced and compressed with multiple cysts that contain scant clear, watery to slightly viscous fluid.



Follow-up questions:

1. *Given the signalment, clinical history, gross description and photos: What are your differentials and/or morphologic diagnoses?*
2. *What is the pathogenesis?*

**Associate Editor for this Diagnostic Exercise:** Patricia Pesavento

**Editor-in-chief:** Claudio Barros

\*The Diagnostic Exercises are an initiative of the **Latin Comparative Pathology Group (LCPG)**, the Latin American subdivision of The Davis-Thompson Foundation. These exercises are contributed by members and non-members from any country of residence. Consider submitting an exercise! A final document containing this

material with answers and a brief discussion will be posted on the CL Davis website (<https://davisthompsonfoundation.org/diagnostic-exercise/>)

]