

Diagnostic Exercise

From the CL Davis/SW Thompson Foundation

Case # **127**; Month: **July**; Year: **2023**

Question sheet

Contributors: Maria L.S.L. Frota¹, João P. Gomes da Silva¹, Telma S. Lima¹, Givaldo B. Silva-Filho¹, Polly Ana C.P. Lima², Fábio S. Mendonça^{1,3} and Francisco A. Uzal³.
¹Laboratory of Animal Diagnosis, Universidade Federal Rural de Pernambuco, Recife, PE, Brazil. ²Dois Irmãos Zoo State Park, Recife, PE, Brazil. ³California Animal Health and Food Safety Laboratory System, San Bernardino Branch, University of California-Davis, San Bernardino, CA, USA. fauzal@ucdavis.edu

Clinical history: A 21-year-old woolly monkey (*Lagothrix lagotricha*) from a zoological collection was autopsied after being found dead in the enclosure without previous clinical signs of disease being observed.

Necropsy findings: the prostate was bilaterally firm and diffusely increased in volume; it measured 6.0 cm x 3.5 cm x 2.0 cm (Fig. 1). The cut surface was firm and had multifocal cavities filled with fluid to slightly gelatinous and translucent material.

Gross Images:

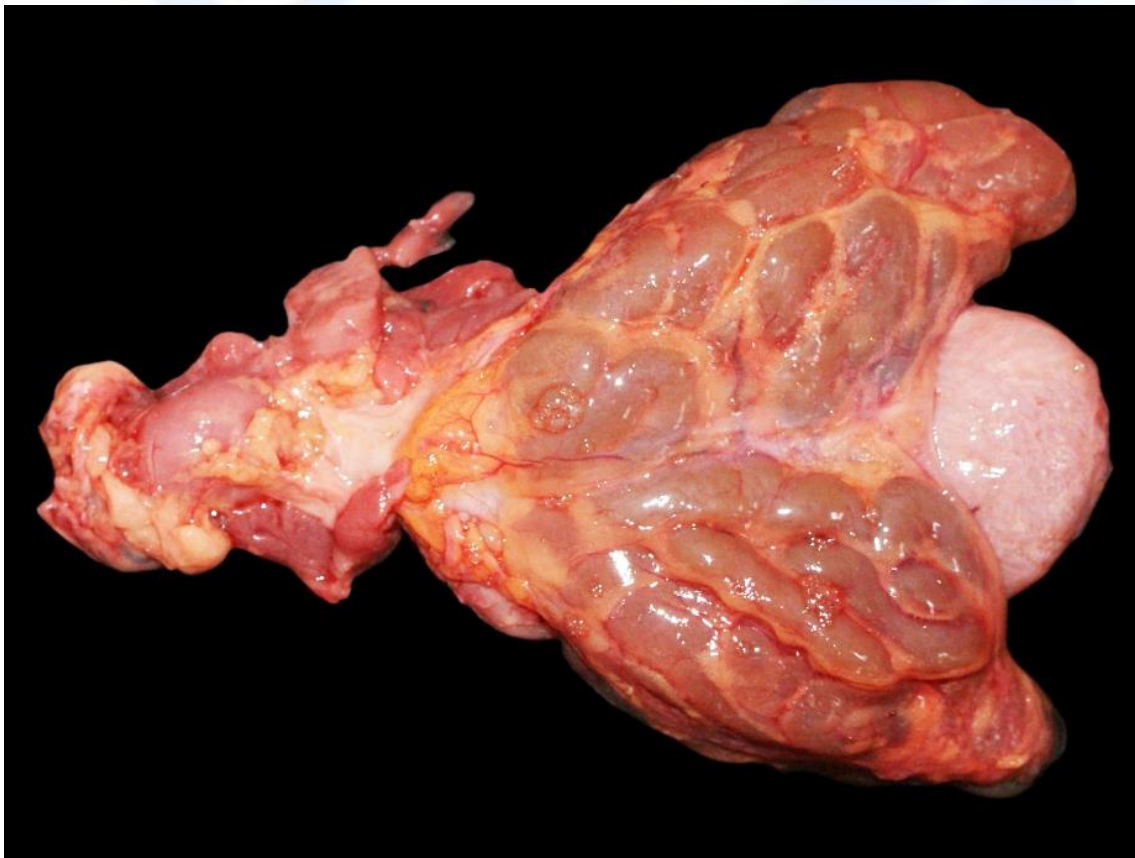


Figure 1.

Microscopic Images:

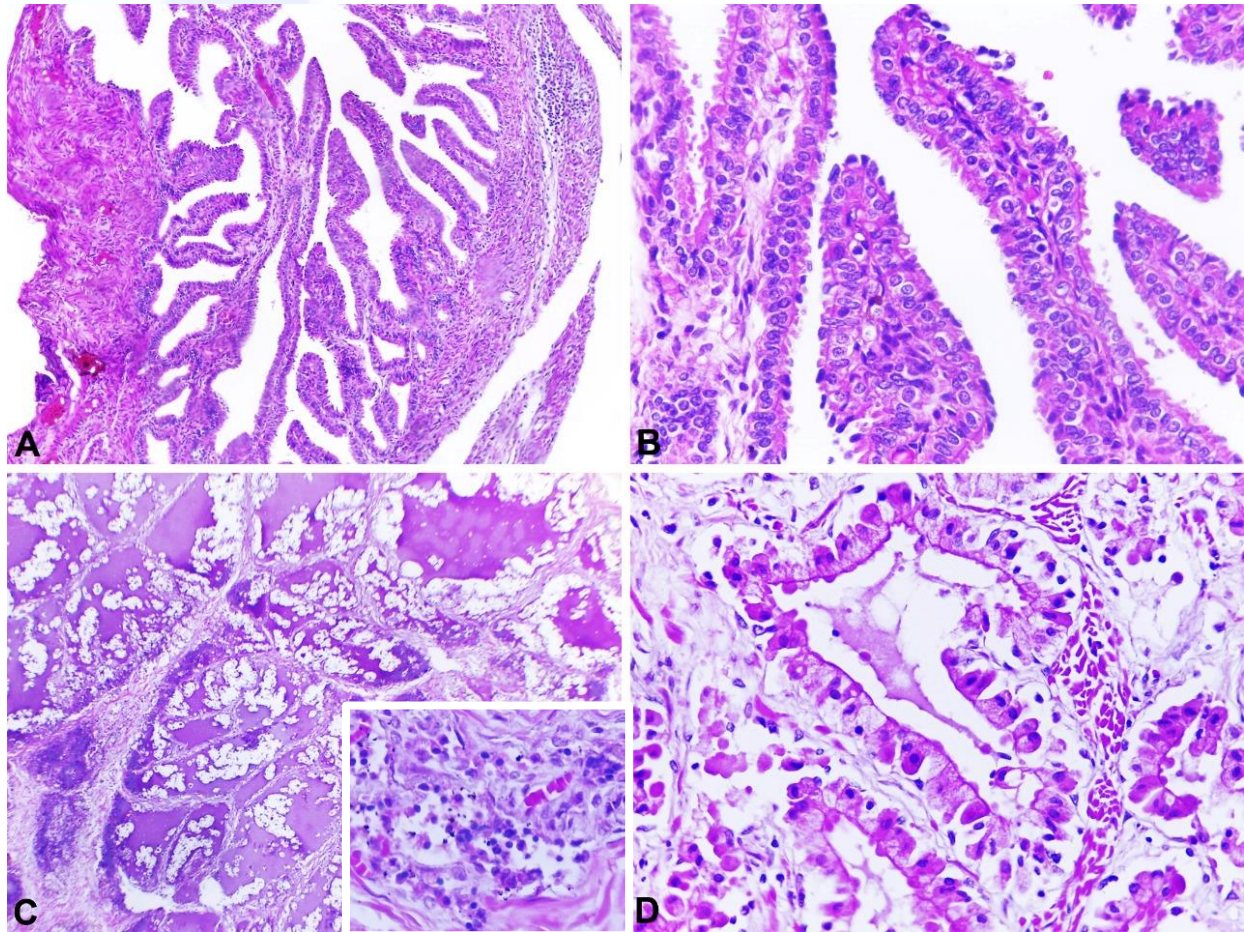


Figure 2.

Follow-up questions:

- *Histologic description*
- *Morphologic diagnosis*
- *Differential diagnosis*

*The Diagnostic Exercises are an initiative of the Latin Comparative Pathology Group (LCPG), the Latin American subdivision of The Davis-Thompson Foundation. These exercises are contributed by members and non-members from any country of residence. Consider submitting an exercise! A final document containing this material with answers and a brief discussion will be posted on the CL Davis website (<https://davisthompsonfoundation.org/diagnostic-exercise/>).

Associate Editor for this Diagnostic Exercise: Francisco Uzal

Editor-in-chief: Claudio Barros