

Managing Editors:
S. Shrader, DVM, PhD
J. Leal, DVM, MSc, PhD
J. Asin, DVM, PhD

davisthompsonfoundation.org

Senior Editor:
F.A. Uzal, DVM, MSc, PhD



**Davis-Thompson
Foundation**

C.L. DAVIS/S.W. THOMPSON
DVM FOUNDATION

A tax-exempt, donative,
publicly-supported charity
For the advancement of veterinary
and comparative pathology

THE DAVIS-THOMPSON FOUNDATION NEWSLETTER

November 2021

VOL. 51



INSIDE THIS ISSUE

Monthly cover photograph winner: Laura K Bryan

Affiliated Institution: College of Veterinary Medicine & Biomedical Sciences Texas A&M University

Spiracular plate detail of the secondary screwworm *Cochliomyia macellaria* (not stained, 5X) found in an animal bite wound on the nose of a 3-month-old Angus steer.

- | | | | |
|----|---|----|------------------------------|
| 3 | Foundation Announcements | 14 | Spanish Seminar Series |
| 4 | Seminar Reviews | 15 | Standardisation of Tumor |
| 8 | Diagnostic Exercise | 15 | Parameters |
| 10 | Not Just Glass: Getting More From Our Samples | 16 | Seminar Series in Portuguese |
| 11 | Pathology of Domestic Turkeys | 17 | BSTP Corner |
| 12 | Voices in Pathology: LatinX | 20 | IDEXX CaseConnexx Corner |
| 13 | Australian Seminar Series | 21 | Miscellaneous Announcements |

CEO & CHAIRMAN OF THE BOARD
FRANCISCO A. UZAL, DVM, MSc, PhD

PRESIDENT
JEY KOEHLER, DVM, PhD

TREASURER
BRUCE H. WILLIAMS, DVM

BOARD MEMBERS

AUTRAN, RACHEL
BRAYTON, CORY
BRICE, ANGELA
BRITT, JAMES
BROWN, CORRIE C.
CARREIRA, VINICIUS
CARVALLO, FRANCISCO
CHAPMAN, JENNIFER
DARK, MICHAEL
DE NEGRI, RAFAELA

DEL PIERO, FABIO
DEMPSEY, STEPHEN M.
EDWARDS, JOHN
GENDRON-FITZPATRICK, ANNETTE
HYMAN, ROBERT
JEONG, KYU-SHIK
LANGOHR, INGEBORG
LOMBARDINI, ERIC
LYLE, TIFFANY
MCINNES, ELIZABETH
MCNAMARA, TRACEY S.

MÍRA, MÁNDOKI
OJOK, LONZY
PESAVENTO, PATTY
PRIESTNALL, SIMON
RAC, VLADISLAVA S.
ROSS, TONY
SCOTT, DANA
SIMKO, ELEMIR
SLAOUI, MOHAMED
STROMBERG, PAUL
ZADOK, RUBEN

FOUNDATION ANNOUNCEMENTS

The winner of the 2021
Histoween contest is
image #1



It was submitted by Ruben Arturo Lopez Crespo, a graduate from the National Autonomous University of Mexico and now a veterinary pathologist at Aquapath in Colima, Mexico with special interest in pathology of aquatic organisms. He found the silhouette of a bat during histological examination of fish intestine.



Congratulations to the 2021 Davis-Thompson Foundation Award Recipients!

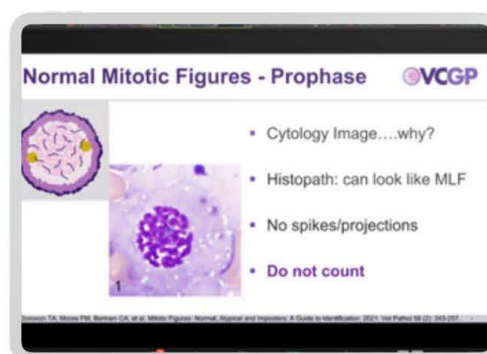
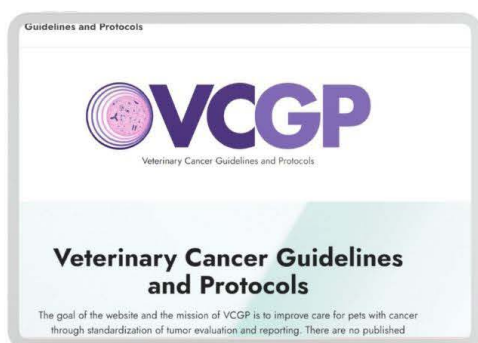
CLICK HERE for more information about the awards and awardees!



SEMINAR REVIEWS

Standardizing Tumor Pathology Reporting, Part 1

Hosted by the Davis-Thompson Foundation and co-sponsored by the ACVP and the Veterinary Cancer Guidelines and Protocols group

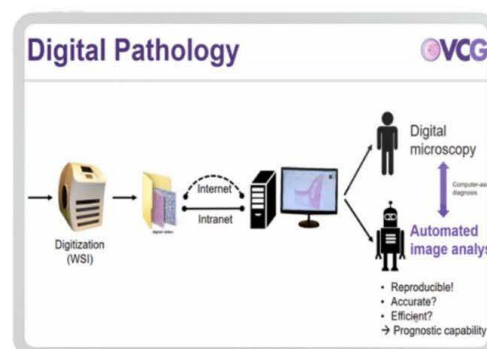


Kindly provided by Dr Taryn Donovan

In this amazing and extremely necessary seminar, our speakers shared valuable information on standarding tumor pathology reporting, generating great conversations!

The Q&A section generated important discussions and exchanges among panelists and participants, and attendees were really engaged!

The seminar was a total hit, with over 750 attendees from all around the world!



Kindly provided by Dr Christof A. Bertram

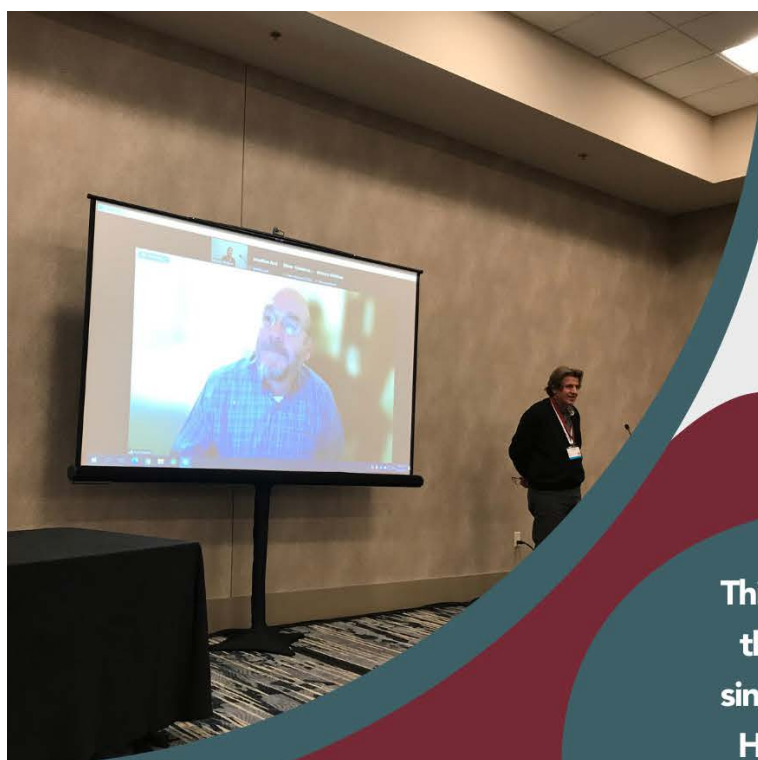
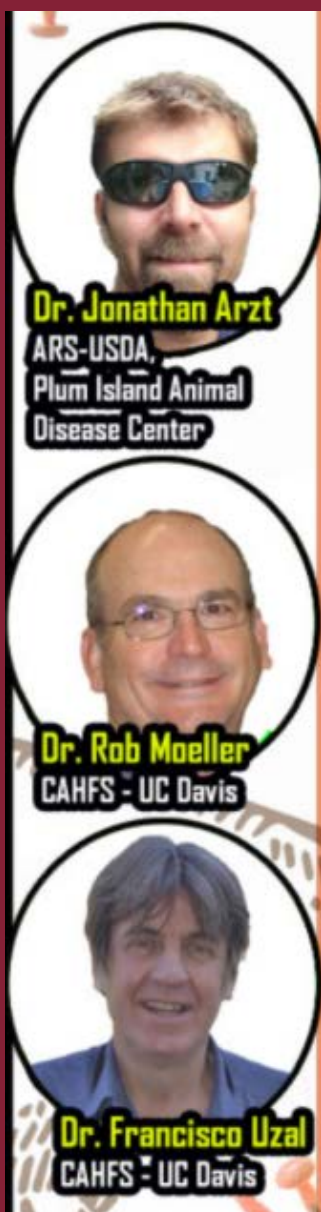
SEMINAR REVIEWS

Over 150 participants registered for the recent 28 th Annual Zoo and Wildlife Pathology Workshop held virtually on Zoom on 4 October 2020 during the joint meeting of the American Association of Zoo Veterinarians and the European Association of Zoo and Wildlife Veterinarians. The audience was from 31 countries and included veterinarian students, interns, residents, and clinical veterinarians as well as veterinary pathologists. Dr. Jana Ritter, from Centers for Disease Control, presented the keynote: "Emerging Disease Preparedness, Diagnostics, and Response," followed by 17 presentations by participants. These talks covered infectious diseases seen in hard clams, cicadas, tentacle snakes, sage grouse, cheetahs, skunks, elephants, and elephant seals among others. Pathogens ranged from infectious tumors, bacteria, viruses, protozoa, to fungus. A contest to name the disease characterized by the inability to rise or even walk following 3 hours of zoom meetings was the lunchtime intermission entertainment; some of the winners were: zombification, asschemia, narcozoomosis, zoomopathy, and zoomatosis. The next Zoo and Wildlife Pathology Workshop is scheduled for 17 September 2022 in Houston, TX where we will hopefully meet in person (stay tuned for more detailed information on the topic and submission deadlines).



Dr. Talia Wong was one of the case presenters in the 2021 Zoo and Wildlife Pathology Workshop.

SEMINAR REVIEWS



21st AAVLD / Davis-Thompson Diagnostic Pathology Symposium PATHOLOGY AND DIAGNOSIS OF TRANSBOUNDARY DISEASES

23 OCTOBER 2021
Denver, CO & Virtual



This was a special year for this collaborative event since it was the first ever HYBRID symposium for both organizations during this new era! With such novelties, also come great challenges. However, this event was considered a mission of inspiration, counting with stellar speakers and a brave virtual (44) & in-person (37) audience. Seeing such interactions between screens, notes, microphones, and the good old round of applause was uplifting! The entire experience gave us all hope and fuel to completely embrace the HYBRID ERA!

SEMINAR REVIEWS



NEUMONÍA INTERSTICIAL EN ANIMALES

1 OCTUBRE 2021

SEMINAR SERIES IN SPANISH

DR. FRANCISCO CARVALLO

(VIRGINIA TECH)





"COMO SIEMPRE ES MUY ENRIQUECEDOR ESCUCHAR AL DOCTOR FRANCISCO CARVALLO, TODO ME QUEDA MÁS CLARO Y ANIMA A BUSCAR MÁS SOBRE EL TEMA. EN GENERAL FUE UNA EXCELENTE CHARLA, DIDÁCTICA, CON EXCELENTE FOTOGRAFÍAS E INFORMACIÓN RECIENTE. MUCHAS GRACIAS."

"FUE BASTANTE BUENO, LA CALIDAD DE LA INFORMACIÓN QUE SE IMPARTIÓ FUE IMPRESIONANTE, LAS ILUSTRACIONES Y EN GENERAL EL CONTENIDO ES EXCELENTE."

"MUY BUENO Y ESPECÍFICO Y FÁCIL DE COMPRENDER POR PARTE DEL DOCTOR."

"I ENJOYED THE SEMINAR! I AM NOT A NATIVE SPANISH SPEAKER, AND AM WORKING ON MY COMPREHENSION OF MEDICAL SPANISH AS I GET BACK INTO LANGUAGE PRACTICE. I APPRECIATE THE OPPORTUNITY TO EXPAND MY PATHOLOGY SKILLS AND LANGUAGE SKILLS AT THE SAME TIME."



Looking Good: Better Slides, Better Photos

12 October 2021

Full Day Seminar

"Great lectures, now I know how to obtain better gross and histopathological pictures, two thumbs up for the Davis-Thompson Foundation."

"One of the most useful seminar, there were so many tips and tricks for the everyday work. It was a great idea to bring specialists from other domains. Thank you for the opportunity to attend it, I really appreciate it."

"The webinar is very useful. There were a lot of things that were pointed out that is beneficial to practitioners. Amazing set of speakers. Thank you so much!"

"The tips for improving slides and images were all very helpful. The presenters also kindly offered assistance going forward if you get stuck!"



Dr. Nicole Leon



Dr. Patricia Pesavento



Dr. David Garnick



Dr. Debbie Gillette



Dr. Francisco Uzal



Order Your Davis-Thompson
T-Shirt Today!
\$20 + shipping



DIAGNOSTIC EXERCISE



Case: **173**; Month: **September**; Year: **2021**

Contributors: Bianca S. de Cecco¹, DVM, MSc; Mariano Carossino², DVM, PhD, DACVM; Pilar Camacho-Luna³, DVM; Christopher Alling³, DVM; Renee Carter³, DVM, DACVO; Jacqueline E. Elliott², DVM; Fabio Del Piero², DVM, PhD, DACVP; Ingeborg M. Langohr², DVM, MS, PhD, DACVP

¹Department of Veterinary Pathology. Faculty of Veterinary Medicine, Federal University of Rio Grande do Sul, Porto Alegre, RS, Brazil.

²Louisiana Animal Diagnostic Disease Laboratory (LADDL) and Department of Pathobiological Sciences, School of Veterinary Medicine, Louisiana State University, Baton Rouge, LA, USA mcarossino1@lsu.edu

³Ophthalmology Service, Veterinary Teaching Hospital and Department of Veterinary Clinical Sciences, School of Veterinary Medicine, Louisiana State University, Baton Rouge, LA, USA.

Clinical History: A 2-year-old, female Poodle dog presented to the Emergency Service at the Veterinary Teaching Hospital (VTH), Louisiana State University School of Veterinary Medicine with a history of lethargy and anorexia. At clinical examination the dog was anemic and febrile. The dog was bilaterally blind. The right eye was buphthalmic and the intraocular pressure was elevated (42 mm Hg). During an ophthalmological consult, bilateral severe panuveitis and optic neuritis with secondary glaucoma in the right eye was diagnosed and treatment was instituted. Despite treatment, the intraocular pressure kept increasing (up to 72 mm Hg overnight), and the clinicians decided to enucleate the right eye due to poor prognosis. After one month, and no response to treatment, the left eye was also enucleated.



DIAGNOSTIC EXERCISE



Gross Findings: Right and left eyes: The vitreous chamber was filled with a yellow, gelatinous exudate while the anterior chamber was filled with a translucent, gelatinous fluid. The retina appeared detached and embedded within the exudate present in the vitreous chamber.

Gross and Microscopic images:

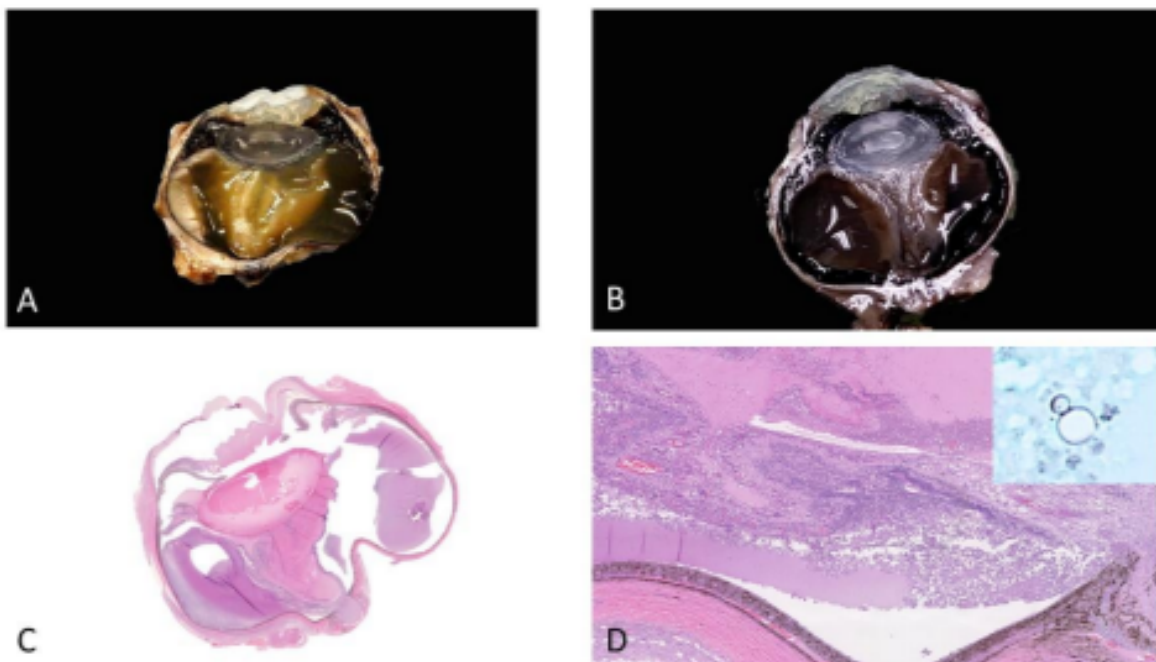


Figure 1. (A) Right eye, bisected specimen. (B) Left eye, bisected specimen. (C and D) Right eye, subgross and 40X, Hematoxylin and eosin. (D, Inset) Gomori methenamine silver stain. 40X.

Follow-up questions:

- *Microscopic description*
- *Morphologic diagnosis and cause*
- *Other possible causes*

[Click here for answers!](#)

Associate Editor for this Diagnostic Exercise: Mariano Carossino

Editor-in-chief: Claudio Barros

NOT JUST GLASS: GETTING MORE FROM OUR SAMPLES

Full Day Seminar

Tuesday, November 16, 2021

9:00am-4:00pm CST

Not Just Glass: Getting More From Our Samples



Davis-Thompson
Foundation



William Hendricks, MD, PhD

**Fee
\$50 USD**



Greg Krane, DVM, PhD, DACVP



Michael Staup, PhD



Jen Grenier, PhD



Nicola J. Mason, BVetMed, PhD

[Click here to register!](#)

PATHOLOGY OF DOMESTIC TURKEYS

Free Friday Seminar

Friday, November 19, 2021

11:00am-12:30pm CST



Davis-Thompson
Foundation

Pathology of domestic turkeys



**Grant Burcham,
DVM, MS, PhD, DACVP**



[Click here to register!](#)

VOICES IN PATHOLOGY: LATINX

Tuesday, November 26, 2021
11am-1pm CST



Davis-Thompson
Foundation



Voices in Pathology: LatinX

[CLICK HERE](#)



Paola Barato

DVM, PhD



Francisco Carvalho

DVM, DSc, DACVP



Federico Giannitti

DVM



Sofia Rosales

DVM, MS



Melissa M. Rioseco

DVM, MPVM, PhD



Ingrid Pardo

DVM, MS, DACVP

[Click here to register!](#)

AUSTRALIAN SEMINAR SERIES



Davis-Thompson Foundation

Australian Webinar Series

USA: Friday, November 12, 7-9pm CST

Australia/NZ: Saturday, November 13, 12pm-2pm AEDT /
11am-1pm AEST / 9-11am AWST / 2-4pm NZST



Integrating radiology, cytology and histology in the diagnosis of bone tumours



Keren Dittmer
DVM, PhD, DACVP
Massey University

[Click here to register!](#)

SPANISH SEMINAR SERIES

Spanish Seminar Series



8/6/2021 **Casos practicos de patologia aviar**
Natalia Majó
(Universitat Autònoma de Barcelona)



9/3/2021 **Enfermedades de conejos**
Juan Manuel Corpa Arenas
(Universidad CEU Cardenal Herrera)



10/1/2021 **Neumonía intersticial en animales: Definiciones, causas y mecanismos**
Francisco Carvalho
(Virginia Tech)



11/12/2021 **Patologia macroscopica de bovinos**
Mario Bedolla
(Universidad Autonoma de Mexico)



12/3/2021 **Enfermedades de cetaceos**
Antonio Fernandez
Universidad de las Palmas de Gran Canaria, Islas Canarias



12/10/2021 **Patología de lagomorfos con especial énfasis en la enfermedad vírica hemorrágica**
Javier Asin
(UC-Davis)



- All seminars in Spanish

Click here to
register for individual
seminars

STANDARDISATION OF TUMOR PARAMETERS

**International /European Division of
Davis-Thompson Foundation**



Davis-Thompson
Foundation

**Standardisation of Tumor Diagnostic and
Prognostic Parameters in Veterinary Pathology**

Wednesday, December 8, 2021

4 pm - 5 pm (London Time = Greenwich Mean Time (GMT))

11 am - noon (US East Coast)

5-6 pm (Germany)

FREE SEMINAR!



Dr. Taryn Donovan

Animal Medical Center (New York - US)

**-This seminar is preapproved by
the ACVP Maintenance of Certification
(MOC) Committee for 1 credit**

https://us02web.zoom.us/webinar/register/WN_b_-d1MaZS6iAKpe52DJ5A

SEMINAR SERIES IN PORTUGUESE

Seminar Series in Portuguese



Davis-Thompson
Foundation

17 novembro 2021 das 17-18:30 BRT

Patologia de aves selvagens e ornamentais



**Renata Assis
Casagrande
DVM, MSc, PhD**



**Click here to
register!**

BSTP CORNER



BRITISH SOCIETY OF TOXICOLOGICAL PATHOLOGY

Notice of Future Meetings



The 36th Annual Scientific Meeting of the BSTP
Pathology of Mice with Human Immune Systems (HIS mice)
Wednesday 10th, Thursday 11th and Friday 12th November 2021



The 36th ASM will be held as a virtual event using Zoom on the afternoons of
Wednesday 10th, Thursday 11th and Friday 12th November 2021, from 13.00 –
17.00 (GMT+0, London/UCT+0) each day.

Continuing Professional Development: Approved by the Royal Society of Biology for the purposes of CPD, this event may be counted as approximately 30 credits.

Immunodeficient mice reconstituted with a human immune system are increasingly used for modelling the human immune compartment in numerous preclinical applications, such as adoptive cell therapy and immuno-oncology studies. With the advent of new Advanced Therapy Medicinal Products, humanised mice are a key component of efficacy and safety assessment in preclinical programmes, including GLP studies. However, limited information is available concerning the morphological aspects of human cell engraftment and the spectrum of spontaneous and experimentally induced histopathological lesions occurring in these mice.

Registration is still open, keep checking the website for up-to-date information, including details of bursaries - <http://www.bstp.org.uk/events/the-36th-asm-of-the-bstp/>

The 36th Annual General Meeting of the BSTP
Friday 26th November 2021
at 14.00 (GMT+0, London/UCT+0) and the duration of the Zoom meeting will be 2.5 hours.

The Annual General Meeting will start at 14.00 with an introduction by the President of the BSTP followed by a presentation from a keynote speaker. Questions will be taken at the end of this presentation.

Following the presentation, at approximately 14.40, the BSTP Council and Education Subcommittee will update you on what society has achieved over the last 12 months.

The Notice and Agenda for the Annual General Meeting, along with the Minutes of the 2020 AGM and the Financial Statement – Independent Examiners Report for the year 2020/2021 will be available October/November 2021.

Keep checking the website for up to date information - <http://www.bstp.org.uk/events/bstp-annual-general-meeting/>

BSTP webinars - in collaboration with the Society of Toxicological Pathology (STP)

28th September 2021 - Arlin Rogers and Wendell Davis (Alnylam Pharmaceuticals) - Topic: A Pathologist Perspective on the Non-Clinical Safety Assessment of GalNAc-conjugated RNAi Therapeutics

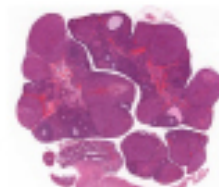
2nd November 2021 - Alessio Ciulli (Dundee Uni) and Kevin Moreau/Kimberly Maratea (AZ) - Topic: PROteolysis Targeting Chimeras (PROTACs) (Intro, safety, pathology)

For more information visit - <http://www.bstp.org.uk/bstp-webinars/>

BSTP CORNER



Virtual Continuing Education Symposium 5: Female Reproductive System
Tuesday 8th – Thursday 17th March 2022
13.00 – 16.30 (GMT+0/UCT+0)



CES 5 will be held as a virtual event using Zoom on the afternoons of Tuesday 8th, Wednesday 9th, Thursday 10th, Tuesday 15th, Wednesday 16th and Thursday 17th March 2022, from 13.00 – 16.30 (GMT+0/UCT+0) each day.

Continuing Professional Development: Royal Society of Biology CPD credits will be applied for.

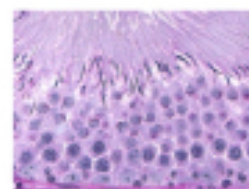
This Continuing Education Symposium will cover an overview of the female reproductive system in preclinical animal species.

Detailed information, including the programme and a registration form will be available in September/October 2021.

If you would like further information, have any queries or would like to reserve a place, please contact the BSTP Secretariat – bstpoffice@aol.com

or visit <http://www.bstp.org.uk/events/ces-5-female-reproductive-system/>

Virtual Continuing Education Symposium 6: Male Reproductive System
Tuesday 5th – Thursday 14th July 2022
13.00 – 16.30 (GMT+1/UCT+1)



CES 6 will be held as a virtual event using Zoom on the afternoons of Tuesday 5th, Wednesday 6th, Thursday 7th, Tuesday 12th, Wednesday 13th and Thursday 14th July 2022, from 13.00 – 16.30 (GMT+1/UCT+1) each day.

Continuing Professional Development: Royal Society of Biology CPD credits will be applied for.

This Continuing Education Symposium will cover an overview of the male reproductive system in preclinical animal species.

Detailed information, including the programme and a registration form will be available in December 2021/January 2022.

If you would like further information, have any queries or would like to reserve a place, please contact the BSTP Secretariat – bstpoffice@aol.com

or visit <http://www.bstp.org.uk/events/ces-6-male-reproductive-system/>



BSTP CORNER



DATES FOR FUTURE EVENTS TO BE ORGANISED BY THE BSTP:

Future BSTP events are as follows:

10th, 11th & 12th November 2021	36th Annual Scientific Meeting – Pathology of mice with human immune systems (HIS mice)
26th November 2021	BSTP Annual General Meeting
8th – 17th March 2022	CES 5 - Female Reproductive System
5th – 14th July 2022	CES 6 - Male Reproductive System
November 2022	37th Annual Scientific Meeting & AGM
March 2023	CES 7 - Infectious diseases in laboratory animals
July 2023	CES 8 - Nervous System
November 2023	38th Annual Scientific Meeting & AGM
March 2024	CES 9 - Urinary System
July 2024	CES 10 - Digestive System
November 2024	39th Annual Scientific Meeting & AGM
March 2025	CES 11 - Cardiovascular System
July 2025	CES 12 - Endocrine System
November 2025	40th Annual Scientific Meeting & AGM
March 2026	CES 13 - Urinary System
July 2026	CES 14 - Lymphoid & Haematopoietic Systems
November 2026	41st Annual Scientific Meeting & AGM
March 2027	CES 15 - Musculoskeletal System & Skin

The order of the CES will depend on the availability of high-quality speakers who are world experts in their particular field to present at the relevant meeting.

For details of webinars visit - <http://www.bstp.org.uk/events/bstp-webinars/> or <http://www.bstp.org.uk/non-bstp-events-and-webinars/>

If you would like to receive information on any of these events as soon as the information becomes available, you need to make sure that the BSTP have your contact details on the mailing list.

You can withdraw your consent to receive communications from the BSTP at any time, by means of a written/emailed request for removal from the database.

Although the BSTP is in contact with similar organisations in Europe and the USA it is the policy of the BSTP **NOT** to pass on details of our mailing list.

The BSTP's Data Protection Policy can be found at <http://www.bstp.org.uk/governance/>

For more information on any of these meetings, keep checking the website - <http://www.bstp.org.uk/events> or contact the BSTP Secretariat - bstpoffice@aol.com

Details of future meetings are correct at the time this information is produced, the BSTP will not be held responsible for any changes to dates, venues and topics of these events.

If you have any queries, or require further information regarding this symposium, please contact:

BSTP | PO Box 819 | Harrogate HG1 9XF | North Yorkshire | UK
 Tel: +44 (0)7894 123 533
 Email: bstpoffice@aol.com Website: www.bstp.org.uk

IDEXX CASECONNEX CORNER

Signalment: 11-year-old, female spayed, Labrador Retriever

Source/ History: Hard mass found by the client approximately 2.5 weeks ago. Right side, dorsal, next to anus

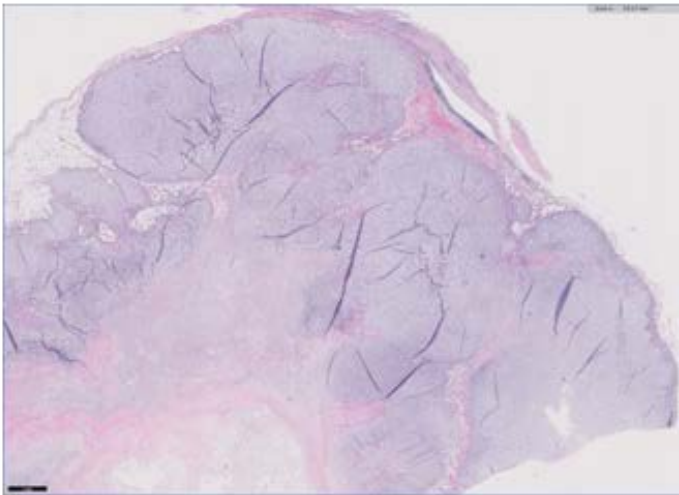


Figure 1. (1X magnification, H&E stain) Subcutaneous mass. Within the subcutis, is an unencapsulated, multinodular mass with a central region of necrosis.

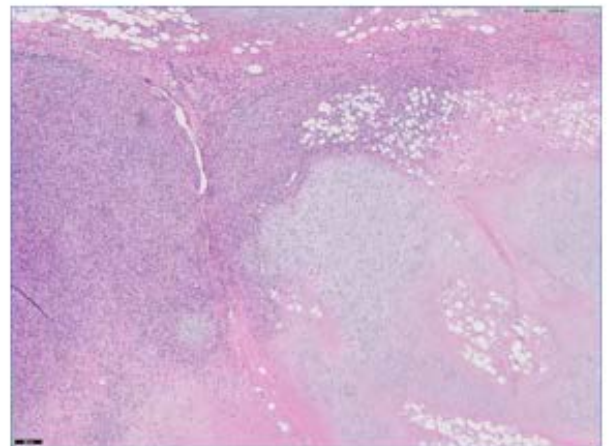


Figure 2. (5X magnification, H&E stain) The mass is composed of islands and lobules of cartilage and streams of spindle cells.

Microscopic Description:

The sample is composed of a well-demarcated, unencapsulated, moderately to densely cellular, multinodular neoplasm. The mass is composed of polygonal to spindle shaped cells arranged in streams, bundles and sheets within a variably dense and myxomatous to chondroid matrix. Neoplastic cells have variably distinct cell borders, mild to moderate amounts of amphophilic cytoplasm, round to oval nuclei with finely stippled chromatin and generally one small nucleolus. There is mild to moderate anisocytosis and anisokaryosis. In regions with more mature chondroid matrix, there are scattered binucleated chondrocytes. There is a locally extensive region of necrosis in the center of the mass.

Microscopic Interpretation:

Chondrosarcoma (compatible with an extraskeletal chondrosarcoma)

Mitotic count: 16 in ten high power fields (total 2.37 mm²)

Vascular/lymphatic invasion: Not observed

Margin assessment: Appears completely/narrowly excised with a closest margin of 0.1 mm composed of collagenous connective tissue

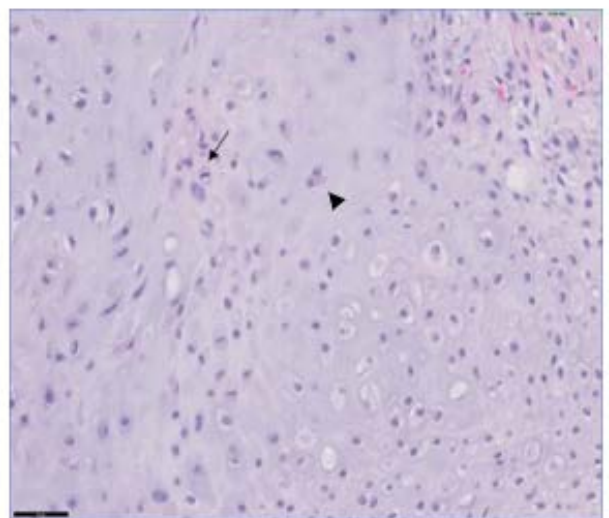


Figure 3. (40X magnification, H&E stain) Neoplastic cells have variably distinct cell borders, mild to moderate amounts of amphophilic cytoplasm, and round to oval nuclei. There are occasional binucleated cells (arrowhead) and mitotic figures (arrow) in chondrocytes.

Comments:

Extraskeletal chondrosarcomas are locally aggressive neoplasms that rarely metastasize, though can recur if incompletely excised. In dogs, approximately 1% of chondrosarcomas are extraskeletal, and visceral organs are more commonly affected than the soft tissues (excluding mammary origin tumors). Metastatic potential is considered low based on published reports, though visceral extraskeletal chondrosarcomas have been associated with metastatic potential in some case reports.

A layer of connective tissue surrounded the submitted mass and there was no clinical history of connection to bone, and thus an extraskeletal chondrosarcoma was favored in this case. Further correlation with the overall clinical picture including any imaging was recommended to rule out the possibility that this mass could be arising from the nearby caudal vertebrae or pelvic bone.

References: Meuten, ed. (2017) Tumors in Domestic Animals, 5th ed., 400; Patnaik AK (1990), Vet Pathol. 27(1):46-55

Case by
Joseph Malatos, DVM, DACVP

IDEXX

CaseConnex

Visit [CaseConnex.com](https://www.caseconnex.com) to Register

MISCELLANEOUS ANNOUNCEMENTS



Become a member of the Latin Comparative Pathology Group



LCPG:

- Provides Diagnostic Exercises
- Offers travel awards
- Coordinates externships in US labs for Latin Americans
- Organizes and lectures in Latin American seminars and courses

Membership Fees:

\$50 - Professionals in US, Canada, and Europe

\$30 - Professionals in Latin America

\$25 - Students in US, Canada, and Europe

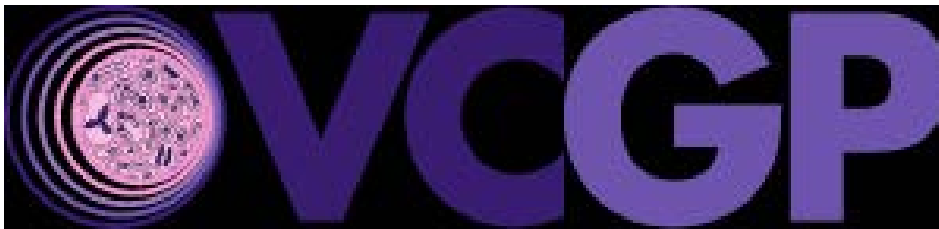
\$15 - Students in Latine America

[CLICK HERE](#) to learn more.

Use this link to join: <https://davisthompsonfoundation.regfox.com/lcpg-membership>

LCPG is the proud Latin American Division of the Davis Thompson Foundation

MISCELLANEOUS ANNOUNCEMENTS



www.vcgp.org is now live!

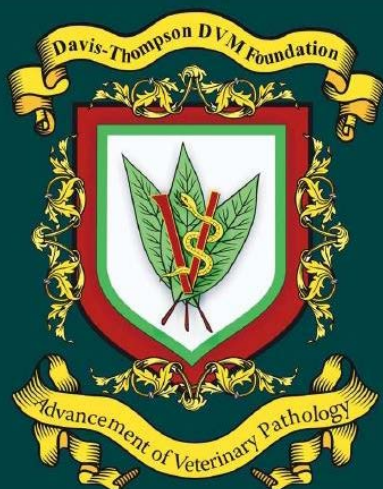
The goal of the website and the mission of VCGP is to improve care for animals with cancer through standardization of tumor evaluation and reporting. This website provides guidelines for assessing common parameters used in the light microscopic assessment of animal tumors as well as complete protocols recommended for investigators seeking to establish tumor grading systems. VCGP created this website to maintain these guidelines and protocols as centralized resources for veterinary anatomic and clinical pathologists to assist in reporting and gathering relevant information about aggressive tumors. Detailed protocols and guidelines are educational and research resources while the concise versions are user ready checklists for diagnosticians and editors/reviewers of manuscripts. These are living documents that will be updated and are continuations of manuscripts published by our veterinary pathologist colleagues.

Below is the link to a recent publication: International Guidelines for Veterinary Tumor Pathology: A Call to Action - <https://doi.org/10.1177/03009858211013712>

MISCELLANEOUS ANNOUNCEMENTS

Surgical Pathology of Tumors of Domestic Animals

Edited by M. Kiupel



Volume 3: Tumors of Soft Tissue

P. Roccabianca, F. Y. Schulman,
G. Avallone, R. A. Foster, J. L. Scruggs,
K. Dittmer, M. Kiupel

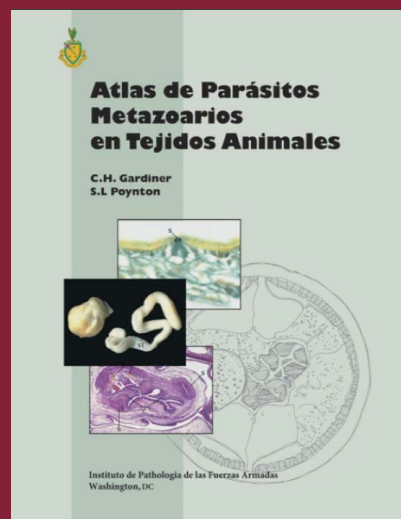
[CLICK HERE](#) to order your copy today!

RETIRING?

Have slides left over from your recent slide seminar? Just looking to free up some storage space? The Foundation is looking for additional glass slides, kodachromes and other similar materials for its Correspondence Division and Study Centers. All materials should be well identified with as much accompany history and discussion as possible, as these materials are expressly used for teaching. Moreover, as the Foundation is a publicly donative charity, all donated materials are tax-deductible. For more information, please contact Dr. Bruce Williams at bruce.h.williams.dvm@gmail.com.

Davis-Thompson Foundation Pathology Externship

Since 1980, the Davis-Thompson Foundation lab sites have hosted more than 125 veterinary students at 8 participating diagnostic laboratories. These students usually have a strong interest in pathology itself or zoo or poultry medicine that require a strong pathology background. The Foundation is always interested in having veterinary students apply for an externship and we would like to add more externship sites that do not usually have veterinary students, to help increase their interest and knowledge of pathology with some off-campus experience. For more information, contact Dr. Jim Britt, jobritt@sbcglobal.net; 501-912-1449.



Atlas De Parasitos Metazoarios En Tejidos Animals - Click Here to Get a Digital Download!



Davis-Thompson
Foundation

DAVIS-THOMPSON FOUNDATION

Phone: 847-367-4359

Fax: 847-247-1869

davis-thompsonfoundation.org

clDavisdvm@comcast.net

NOVEMBER 2021