

Diagnostic Exercise

From The Davis-Thompson Foundation*

Case #216; Month **July**; Year: **2023**

Question sheet

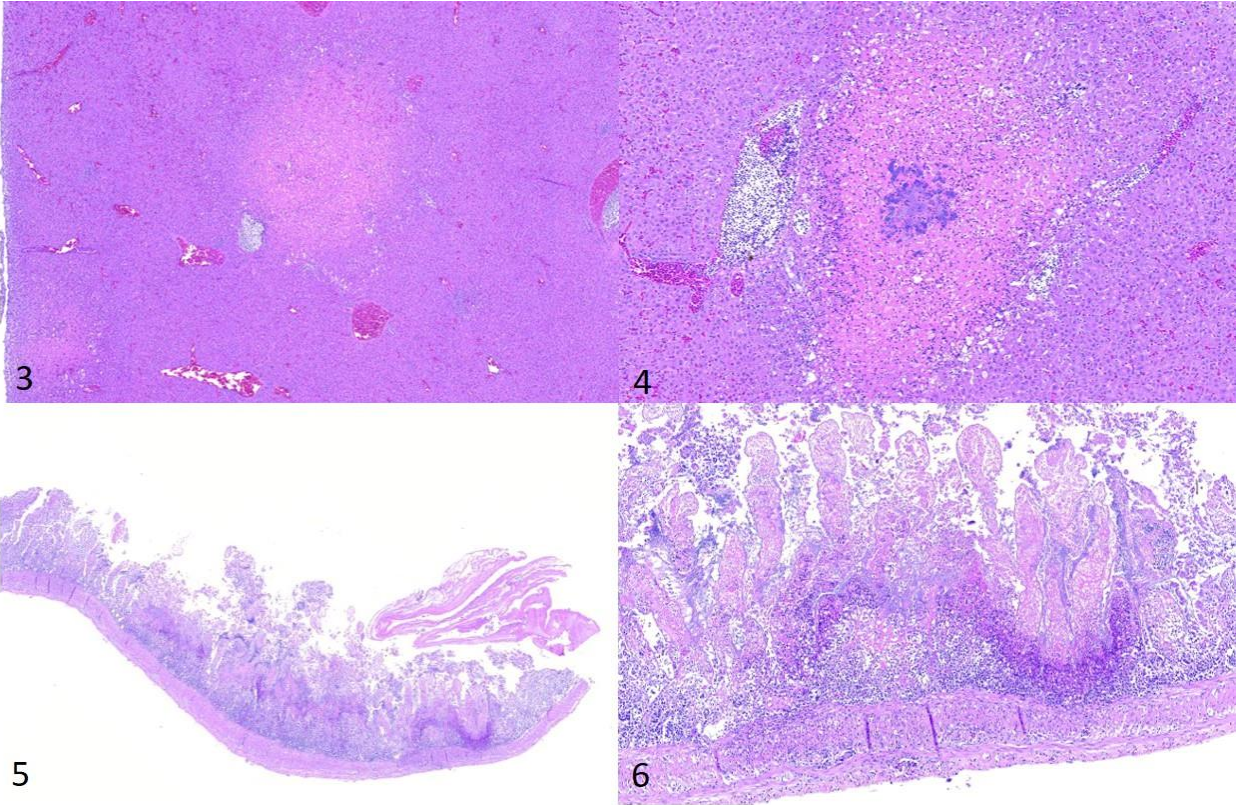
Contributors: Francisco R Carvalho, Thomas E. Cecere. Department of Biomedical Sciences and Pathobiology, Virginia Maryland College of Veterinary Medicine.

fcarvalho@vt.edu

History: Three juvenile quails were submitted for necropsy, with history of weight loss and lethargy of one-week duration. They have lost about 60 out of 250, and 40 died in the last 48 hours. These birds were healthy when received.

Necropsy findings: All birds were thin, with small deposits of adipose tissue in the celomic cavity. In all, multifocal to coalescing irregular, white to gray, slightly firm, well demarcated plaque-like lesions were observed in the duodenum and jejunum from the serosa (Figs. 1 and 2). In one of them, these plaques coalesced and conferred a granular appearance to the serosa of the duodenum (Fig. 2). In two birds, multifocal white pin point lesions were identified in the liver (Fig. 2). Samples of the liver (Figs 3 and 4) and small intestine (Figs 5 and 6) were collected for histopathology and microbiology.





Follow-up questions:

- *Morphologic diagnosis:*
- *Etiology:*
- *Name the disease:*

*The Diagnostic Exercises are an initiative of the Latin Comparative Pathology Group (LCPG), the Latin American subdivision of The Davis-Thompson Foundation. These exercises are contributed by members and non-members from any country of residence. Consider submitting an exercise! A final document containing this material with answers and a brief discussion will be posted on the CL Davis website (<https://davisthompsonfoundation.org/diagnostic-exercise/>).

Associate Editor for this Diagnostic Exercise: Francisco Carvallo

Editor-in-chief: Claudio Barros