



Diagnostic Exercise

From The Davis-Thompson Foundation*

Case #: **226** Month: **December**; Year: **2023**
Question Sheet

Contributors: Fernanda G. Cony, DMV, MSc; Fernanda F. Perosa, DMV, MSc; Bianca S. de Cecco, DVM, MSc, PhD; Luan C. Henker, DMV, MSc, PhD; Welden Panziera, DVM, MSc, PhD; Saulo P. Pavarini, DVM, MSc, PhD. Setor de Patologia Veterinária, Faculdade de Medicina Veterinária, Universidade Federal do Rio Grande do Sul (UFRGS), Porto Alegre, RS, Brazil. Corresponding author: Universidade Federal do Rio Grande do Sul. fgcony@gmail.com

Clinical History: A two-year-old Angus heifer showed respiratory distress, nasal bleeding, and fever. These clinical signs started 24 hours before death. This heifer was part of a herd with 70 animals kept in native pastures, in an extensive grazing system. The animal was medicated but died during the night.

Gross Findings: The heifer was in good body condition. The ocular conjunctiva was markedly pale tan. Multifocal hematomas were observed in the subcutaneous tissue. Extending throughout approximately 50% of the omasal serosal surface were multiple ill-defined confluent areas of marked hemorrhage. Multiple ill-defined variably sized hemorrhages were observed in the mucosa of the omasum, abomasum and multiples organs, such as the intestines. Marked hemorrhage and edema were present in the retropharyngeal region. In the endocardium and epicardium, there were multifocal areas of severe hemorrhage.

Gross and Histological Images:



Figure 1



Figure 2



Figure 3

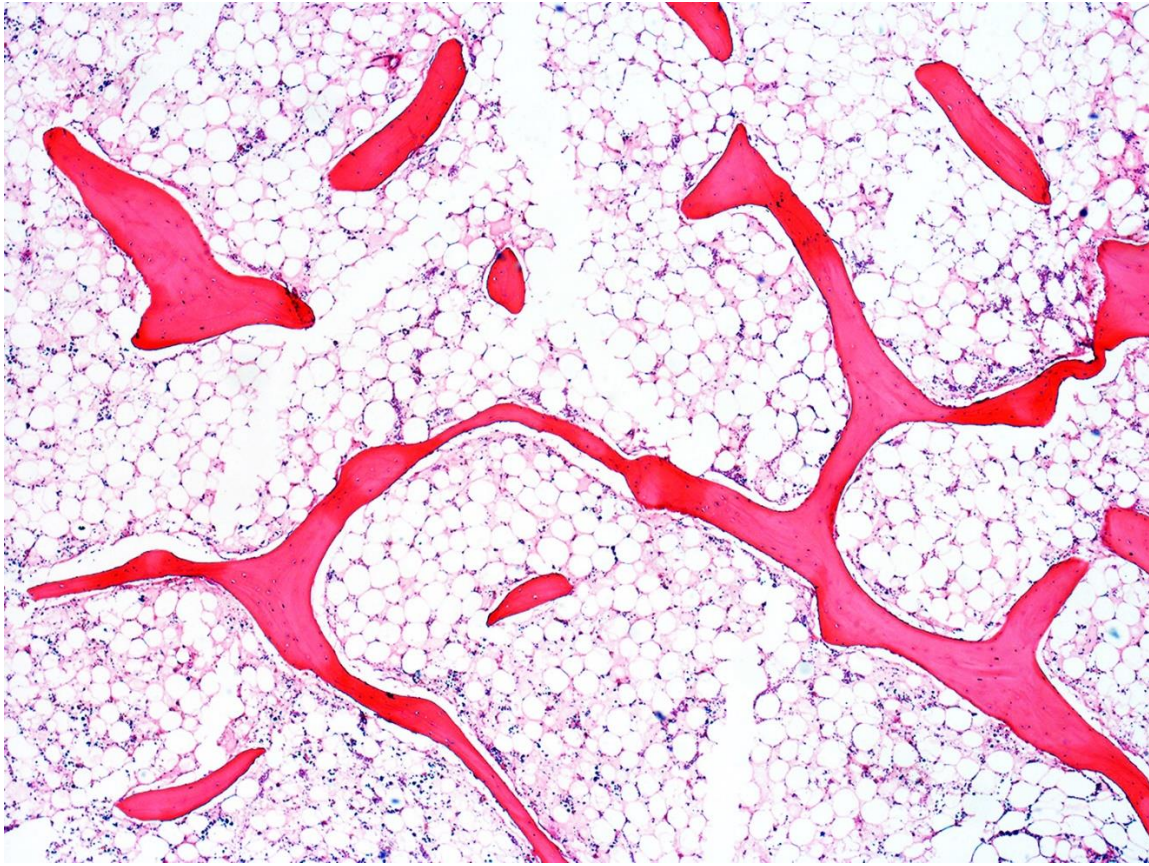


Figure 4

Follow-up questions

- *Cause?*
- *Toxic compound?*
- *Forms of intoxication?*

*The Diagnostic Exercises are an initiative of the Latin Comparative Pathology Group (LCPG), the Latin American subdivision of The Davis-Thompson Foundation (DTF). These exercises are contributed by members and non-members from any country of residence. Consider submitting an exercise! A final document containing this material with answers and a brief discussion will be posted on the DTF website (<https://davisthompsonfoundation.org/diagnostic-exercise/>).

Editor for this Diagnostic Exercise: Saulo Pavarini

Editor-in-chief: Claudio Barros