



Diagnostic Exercise

From The Davis-Thompson Foundation*

Case #: **200**; Month: **November**; Year: **2022**

Question sheet

Contributors: Bianca S. de Cecco, DVM, MSc, PhD, Luan C. Henker, DVM, MSc, PhD, Franciéli A. Molossi, DVM, MSc, Júlia G. Wronski, DVM, MSc, Marina P. Lorenzett, DVM, MSc, PhD, Caroline Tochetto, DVM, MSc, PhD, Lucía Cano-Ortiz, DVM, MSc, PhD, David Driemeier, DVM, MSc, PhD, Saulo P. Pavarini, DVM, MSc, PhD, Setor de Patologia Veterinária, Faculdade de Medicina Veterinária, Universidade Federal do Rio Grande do Sul (UFRGS), Porto Alegre, RS, Brazil. Corresponding author: Universidade Federal do Rio Grande do Sul. biasantanacecco@gmail.com

Clinical History: A two-year-old Aberdeen Angus heifer presented an abrupt onset of tachypnea, mucopurulent nasal discharge, dyspnea, and fever (41°C). Twenty-four hours after the onset of clinical signs, the heifer had ruminal atony, severe dehydration, hypothermia (35°C), and died. A few days before this heifer died, another two steers from the same herd had similar clinical signs and died. The herd was composed of 200 cattle, confined in an outside pen in a feedlot operation. Cattle were purchased from many properties and introduced to the herd without any type of quarantine or testing. The heifer had been on the property for 39 days and had no vaccination history.

Gross and Histological Images:

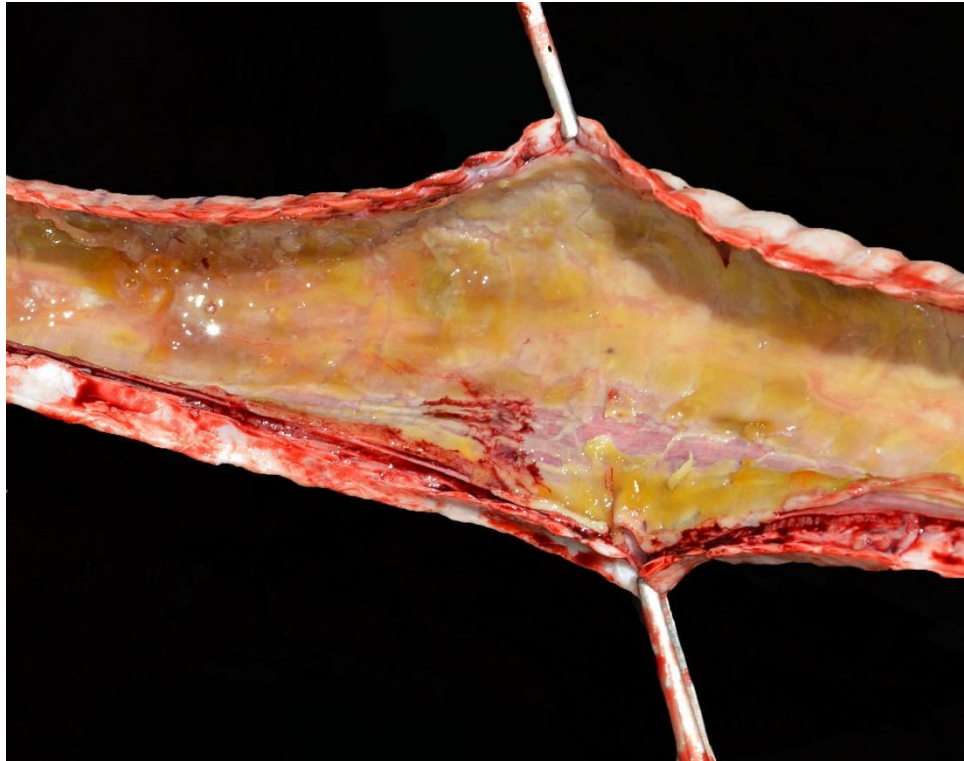


Figure 1.



Figure 2.

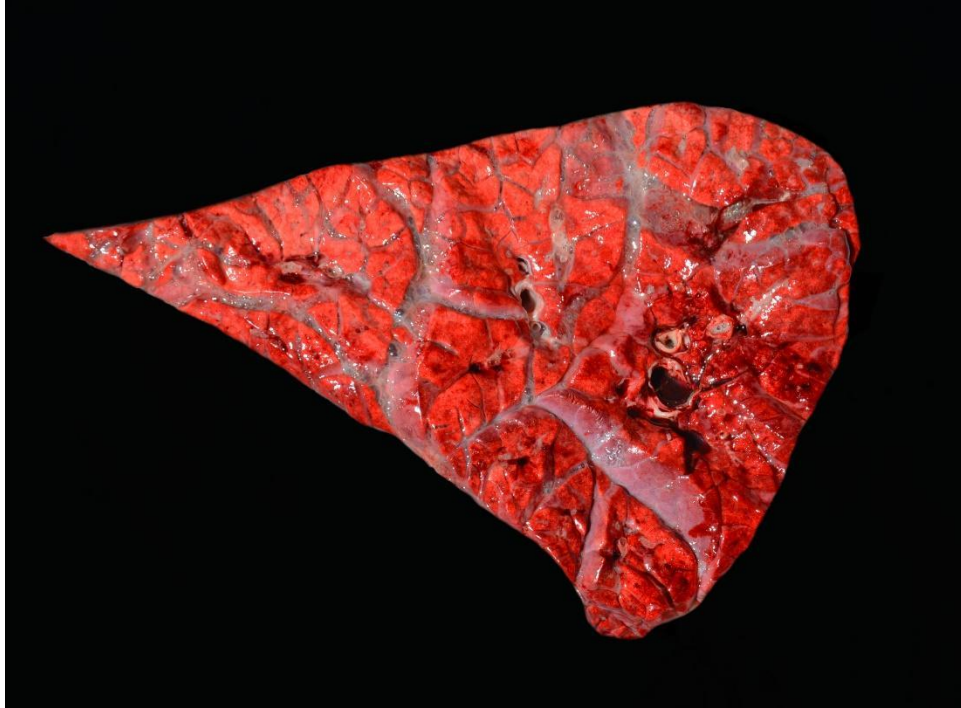


Figure 3.



Figure 4.

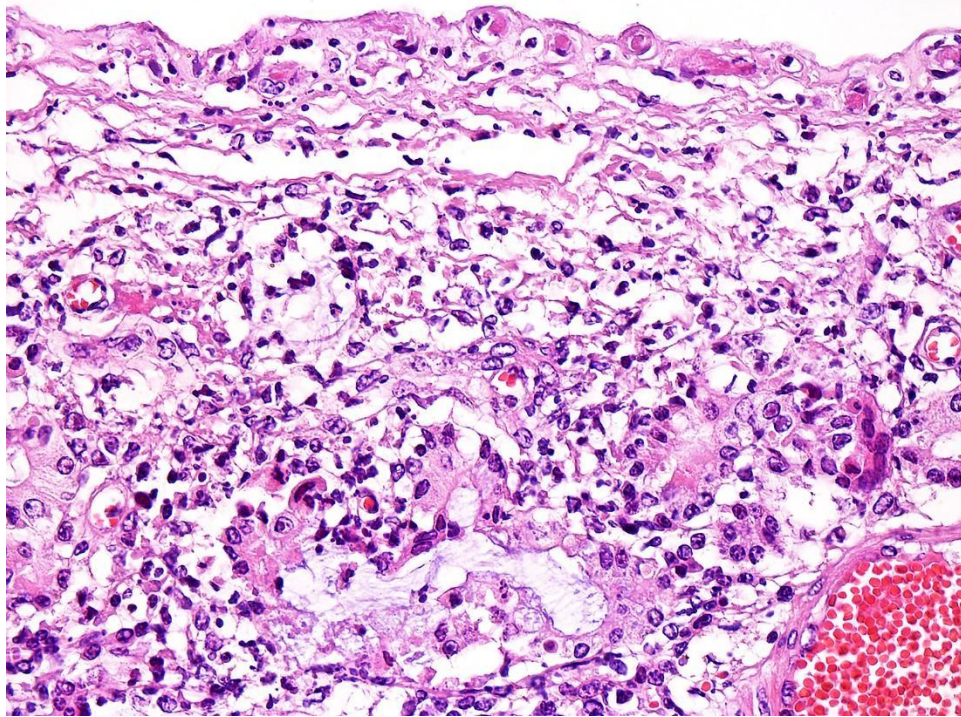


Figure 5.

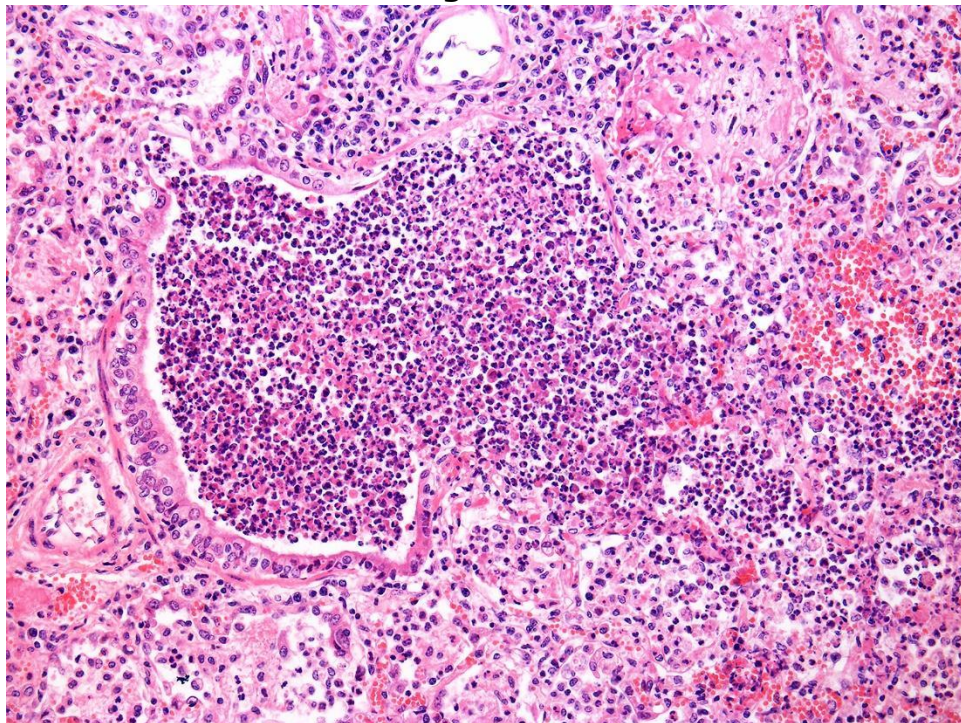


Figure 6.

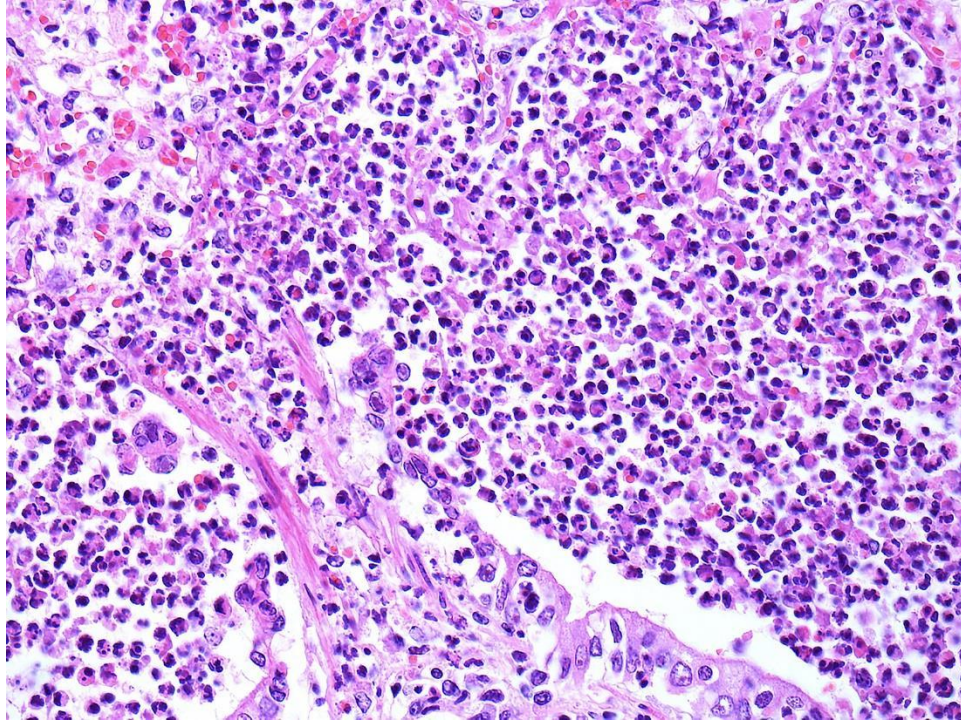


Figure 7.

Follow-up questions:

- *Histological description*
- *Name of the condition*
- *Etiology*
- *Two differential etiological diagnoses*

*The Diagnostic Exercises are an initiative of the Latin Comparative Pathology Group (LCPG), the Latin American subdivision of The Davis-Thompson Foundation. These exercises are contributed by members and non-members from any country of residence. - Consider submitting an exercise! - A final document containing this material with answers and a brief discussion will be posted on the CL Davis website (http://www.cldavis.org/diagnostic_exercises.html).

Associate Editor for this Diagnostic Exercise: Saulo Pavarini
Editor-in-chief: Claudio Barros