



Diagnostic Exercise From The Davis-Thompson Foundation*

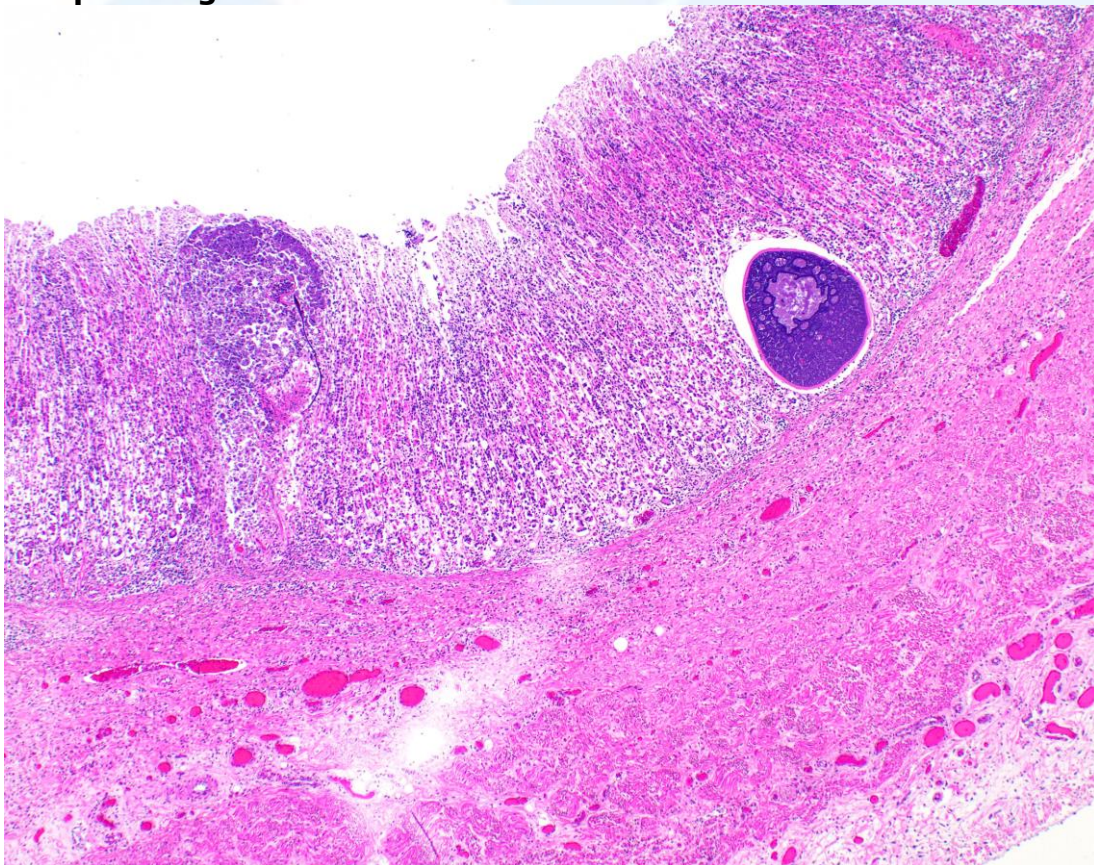
Case #: **149** Month: **September** Year: **2020**

Contributors: Vanessa J. Oakes¹ DVM, MPH and Francisco R Carvalho MV, DSc, DACVP. Department of Biomedical Sciences and Pathobiology, Virginia-Maryland regional College of Veterinary Medicine, Virginia Tech. voakes@vt.edu

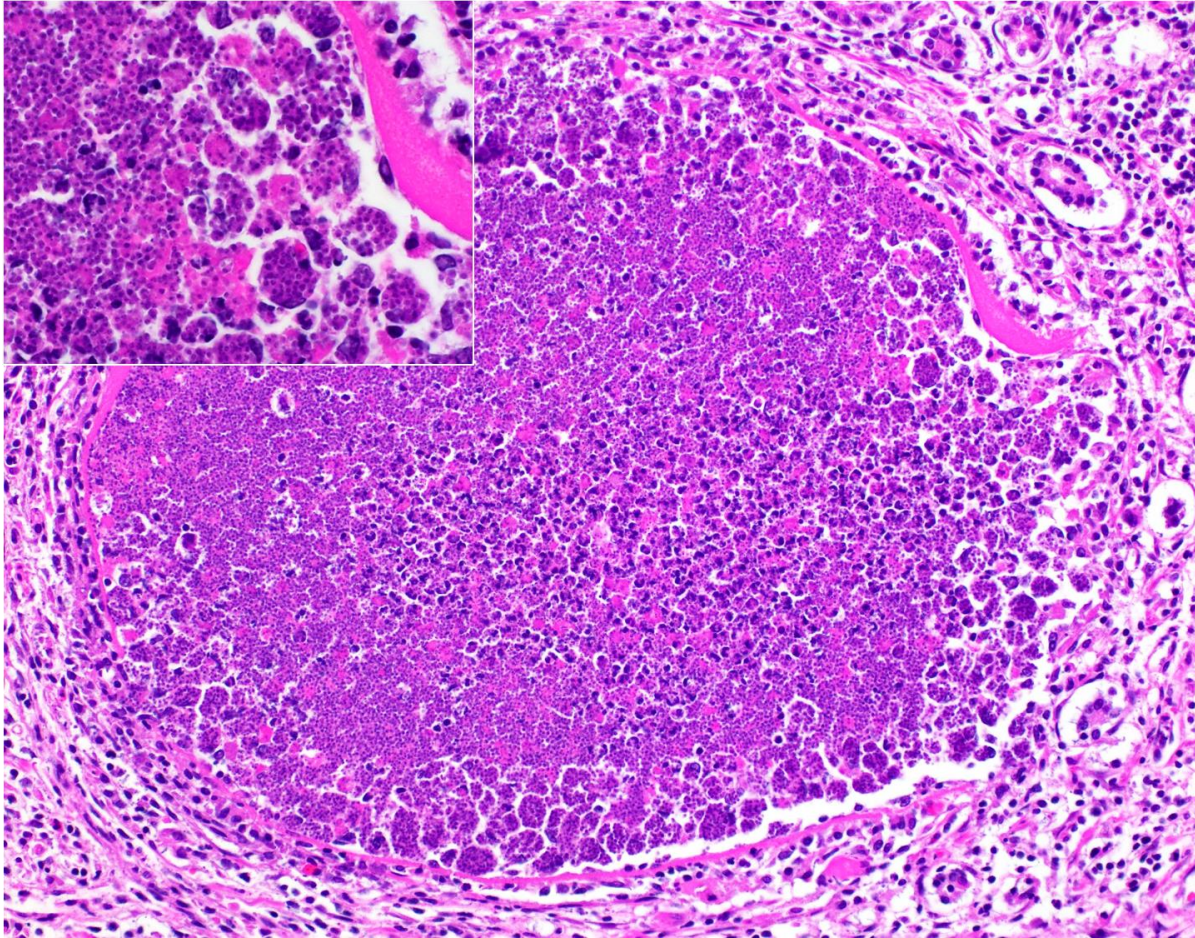
Clinical History: A 1-year-old ram lamb was presented for necropsy following a brief clinical history of 2 to 3 days of scours, and a 4-day history of anorexia and hyperdipsia. The producer noted that the lamb often used a provided salt lick.

Necropsy Findings: The lamb was in good body condition. The right cranial and middle lung lobes were consolidated, with yellow-tinged foam exuding from small airways on the cut surface. The abomasal mucosa was grey, with few scattered petechiae.

Microscopic Images:



Abomasum, H&E, 4X.



Abomasum, H&E, 20X. Inset: H&E, 60X.

Follow-up questions:

- Morphologic diagnosis?
- Etiology?

*The Diagnostic Exercises are an initiative of the Latin Comparative Pathology Group (LCPG), the Latin American subdivision of The Davis-Thompson Foundation. These exercises are contributed by members and non-members from any country of residence. - Consider submitting an exercise! - A final document containing this material with answers and a brief discussion will be posted on the CL Davis website (http://www.cldavis.org/diagnostic_exercises.html).

Editor-in-chief: Claudio Barros

Associate Editor for this Diagnostic Exercise: Francisco R Carvalho.