

Diagnostic Exercise

From The Davis-Thompson Foundation*

Case # **256**; Month: **March**; Year: **2025**
Question sheet

Contributora: João Paulo S. Cavasani¹, Wuglenya D.M. Silva¹, Lucas A.D. Pavelegini¹, Edson M. Colodel¹, Fernando H. Furlan^{1*}
¹Veterinary Pathology Laboratory, Veterinary Hospital, Federal University of Mato Grosso, Brazil.

Corresponding author: fernando.furlan@ufmt.br

History: An 18-year-old English thoroughbred gelding was evaluated because of incoordination, circling, and head pressing. The horse died 5 days after the clinical signs started.

Necropsy findings: Small, pinpoint red areas in the cerebellopontine region and in the medulla oblongata (Fig. 1). In the myocardium there were firm, yellow nodules (1-3 cm diameter) (Fig. 2). Samples of the heart (Figs. 3 and 4) and medulla oblongata (Figs. 5 and 6) were collected for histology.

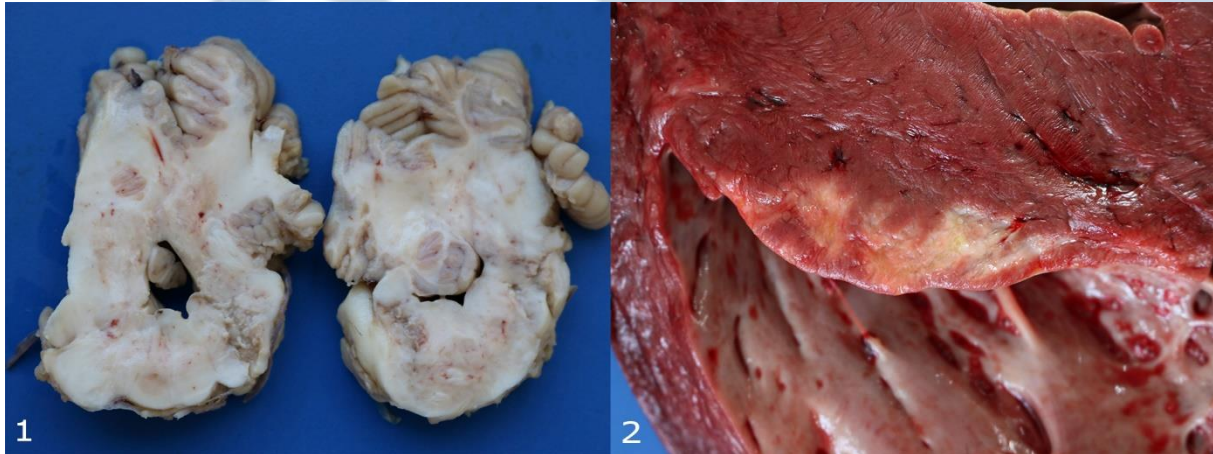
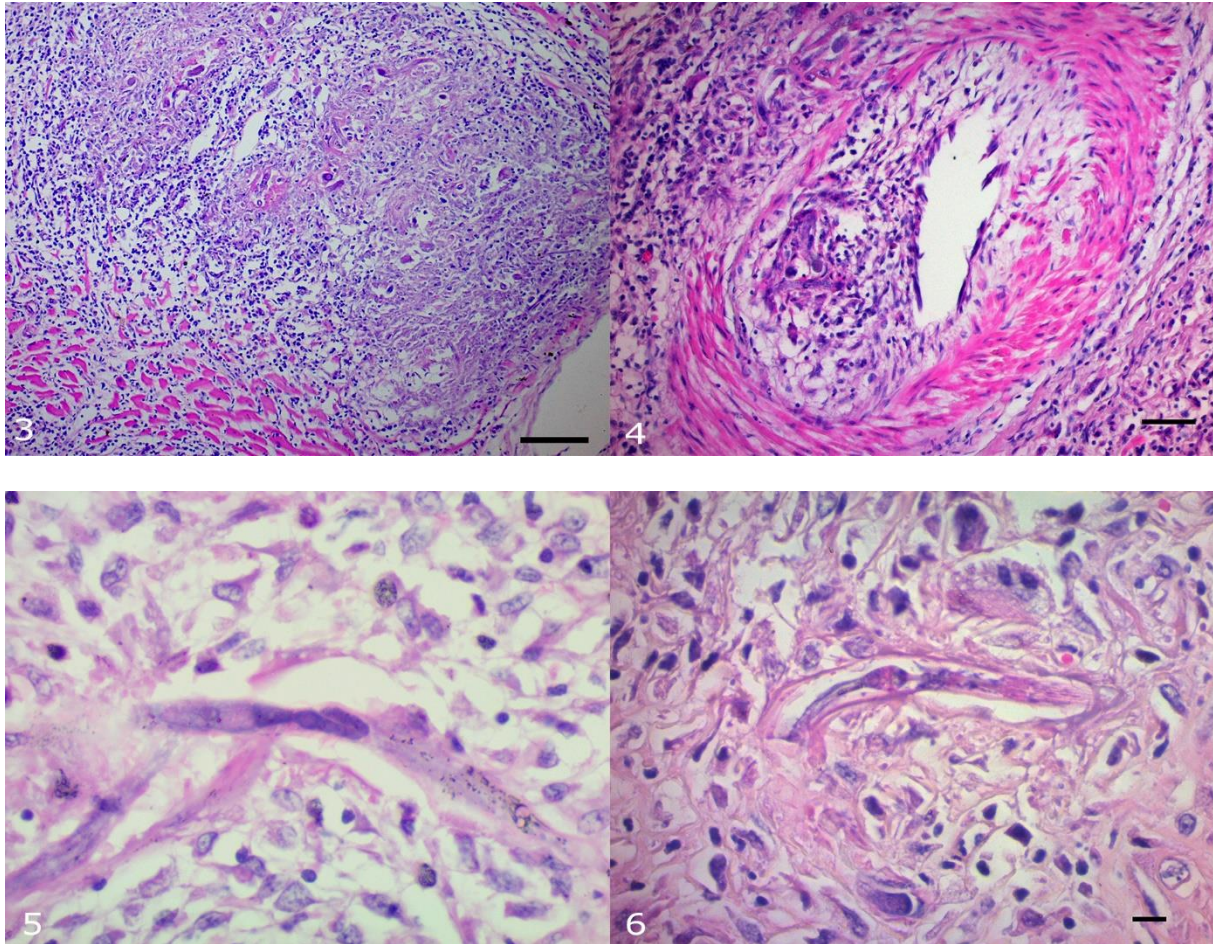


Figure 1. Cerebellum and medulla oblongata, horse. Multifocal small red areas in the white matter. **Figure 2.** Heart, horse. Irregular yellowish area in the myocardium.



Figures 3 and 4. Heart, horse. **Figures 5 and 6.** Cerebellum, horse.

Follow-up questions:

- *Morphologic diagnosis:*
- *Etiology:*
- *Name the disease:*

*The Diagnostic Exercises are an initiative of the Latin Comparative Pathology Group (LCPG), the Latin American subdivision of The Davis-Thompson Foundation (DTF). These exercises are contributed by members and non-members from any country of residence. Consider submitting an exercise! A final document containing this material with answers and a brief discussion will be posted on the DTF website.

(<https://davisthompsonfoundation.org/diagnostic-exercise/>)

Associate Editor for this Diagnostic Exercise: Daniel Rissi
Editor-in-chief: Claudio Barros