

# Diagnostic Exercise

## From The Davis-Thompson Foundation\*

Case #241; Month July; Year: 2024

### Question Sheet

**Contributors:** Daniel R. Rissi<sup>1</sup>, Victoria E. Watson<sup>2</sup>.

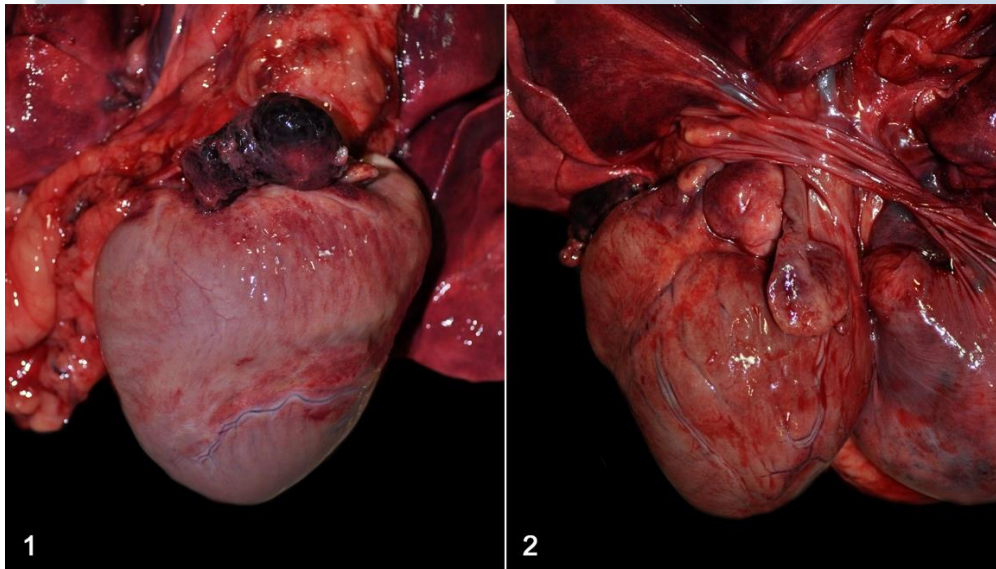
<sup>1</sup>Athens Veterinary Diagnostic Laboratory, Department of Pathology, College of Veterinary Medicine, University of Georgia

<sup>2</sup>Department of Pathobiology and Diagnostic Investigation, College of Veterinary Medicine, Michigan State University.

Corresponding author: [rissi@uga.edu](mailto:rissi@uga.edu)

**Clinical history:** An 11-year-old spayed female Golden Retriever dog was evaluated because of progressive lethargy and shallow breathing. An echocardiogram revealed a mass attached to the right auricle, and the patient was euthanized.

**Autopsy findings:** The pericardial sac contained 200 ml of blood. The right auricle was expanded by a  $2.5 \times 1.2 \times 1.3$  cm, dark red, firm nodule covered with fibrin and blood clots (Fig. 1). The cut surface was dark red. The left auricle and part of the aorta were expanded by a  $1.4 \times 1.7 \times 1.2$  cm, pale pink, firm, smooth nodule (Fig. 2). The cut surface was white.



**Figure 1.** Heart, dog. The right auricle is expanded by a red nodule covered with fibrin and blood clots. **Figure 2.** Heart, dog. The left auricle is expanded by a pale pink, smooth nodule.

**Follow-up questions:**

- *Differential diagnoses for the right auricular lesion*
- *Differential diagnoses for the left auricular lesion*
- *Most likely diagnoses*
- *Diagnostic confirmation*

\*The Diagnostic Exercises are an initiative of the Latin Comparative Pathology Group (LCPG), the Latin American subdivision of The Davis-Thompson Foundation (DTF). These exercises are contributed by members and non-members from any country of residence. Consider submitting an exercise! A final document containing this material with answers and a brief discussion will be posted on the DTF website (<https://davisthompsonfoundation.org/diagnostic-exercise/>).

**Associate Editor for this Diagnostic Exercise:** Daniel Rissi

**Editor-in-chief:** Claudio Barros