



# Diagnostic Exercise

## From The Davis-Thompson Foundation\*

Case #: **202**; Month: **December**; Year: **2022**

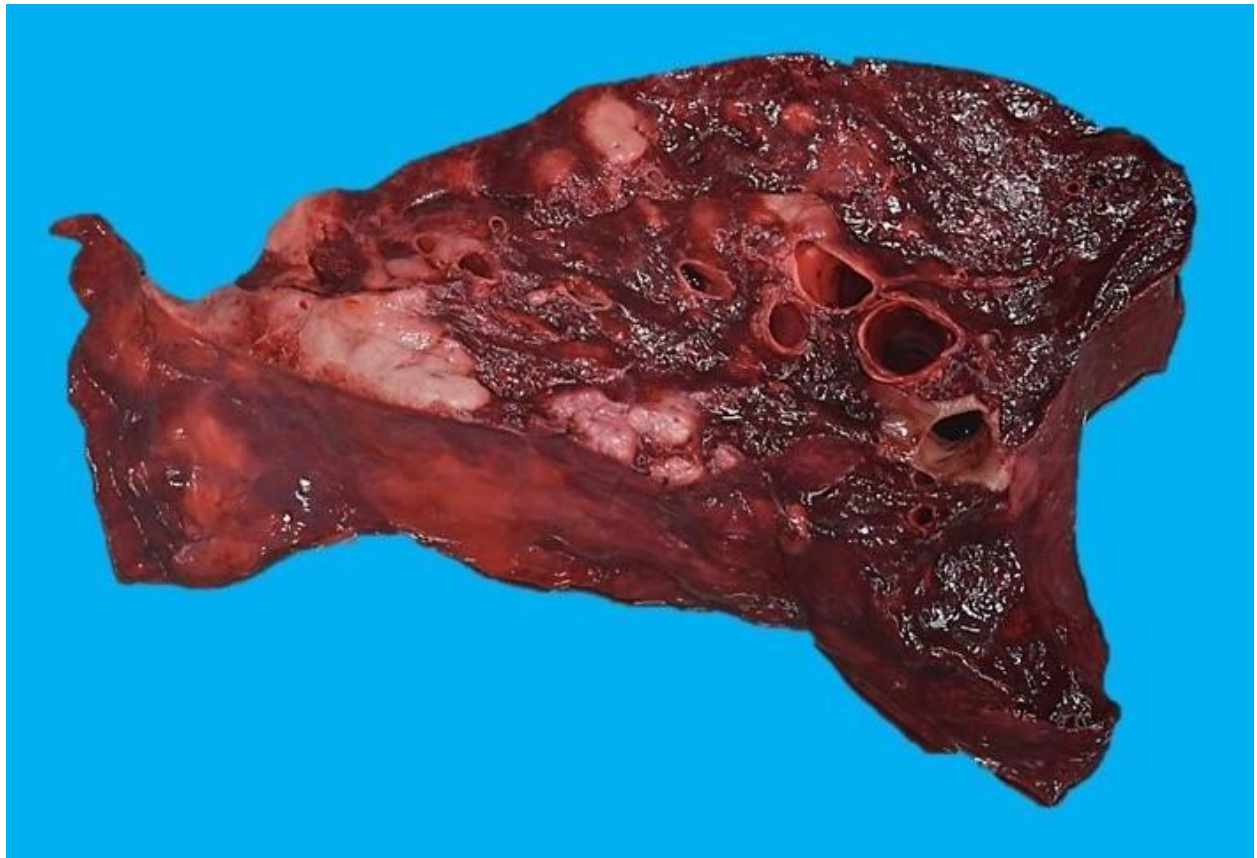
### *Question Sheet*

**Contributors:** Jessica Lambert<sup>1</sup>, Veterinary student; Danielle Meritet<sup>1</sup>, DVM, MS, DACVP; Kimberly Hallowell<sup>1</sup>, DVM; Bonnie Brenseke<sup>1,2</sup>, DVM, PhD, DACVP.<sup>1</sup>North Carolina State University College of Veterinary Medicine, NC. <sup>2</sup>Campbell University, NC [jrlamber@ncsu.edu](mailto:jrlamber@ncsu.edu)

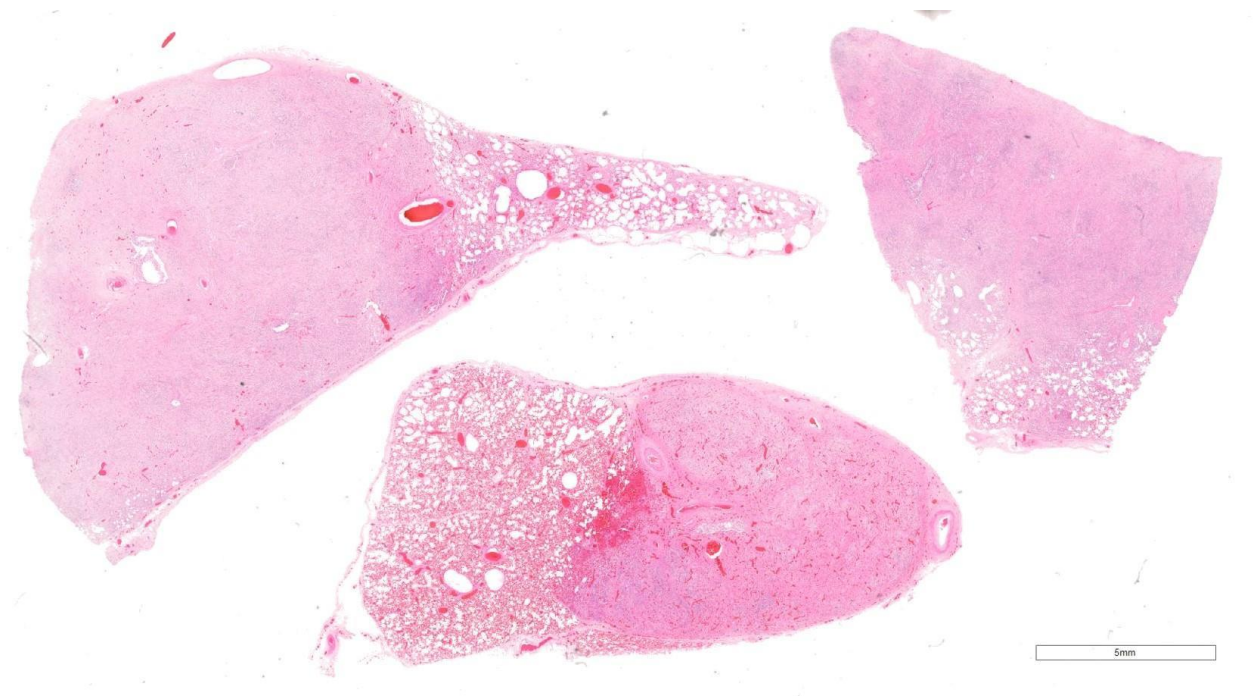
**Clinical History:** A 16-year-old warmblood gelding presented to the equine medicine service for a two-month history of fever and weight loss. Complete blood count revealed a moderate neutrophilic leukocytosis, mild lymphopenia, and mild hyperfibrinogenemia. Pulmonary nodules were seen on imaging. Treatment with antibiotic, antiviral, and anti-inflammatory medications yielded some initial improvement; however, due to intractable fever and clinical decline the horse was euthanized.

**Necropsy Findings:** The lung had numerous firm pale tan solid nodules (Fig. 1). Nodules ranged from <1 cm in diameter to 6.5 x 6 x 3.5 cm. The right pulmonary lobes was more severely affected, and the majority of nodules were in the caudal lobes. Approximately 220 mL of dark red watery fluid was present in the pericardial sac.

**Gross and Microscopic Images:**

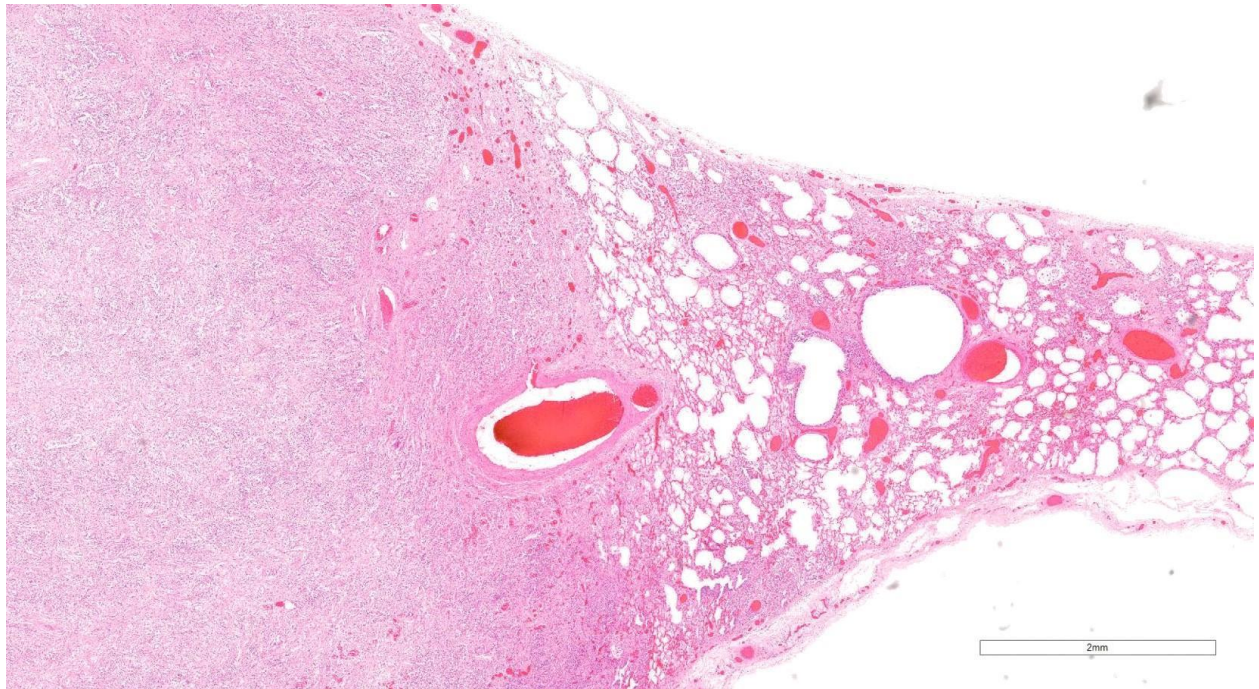


**Figure 1**

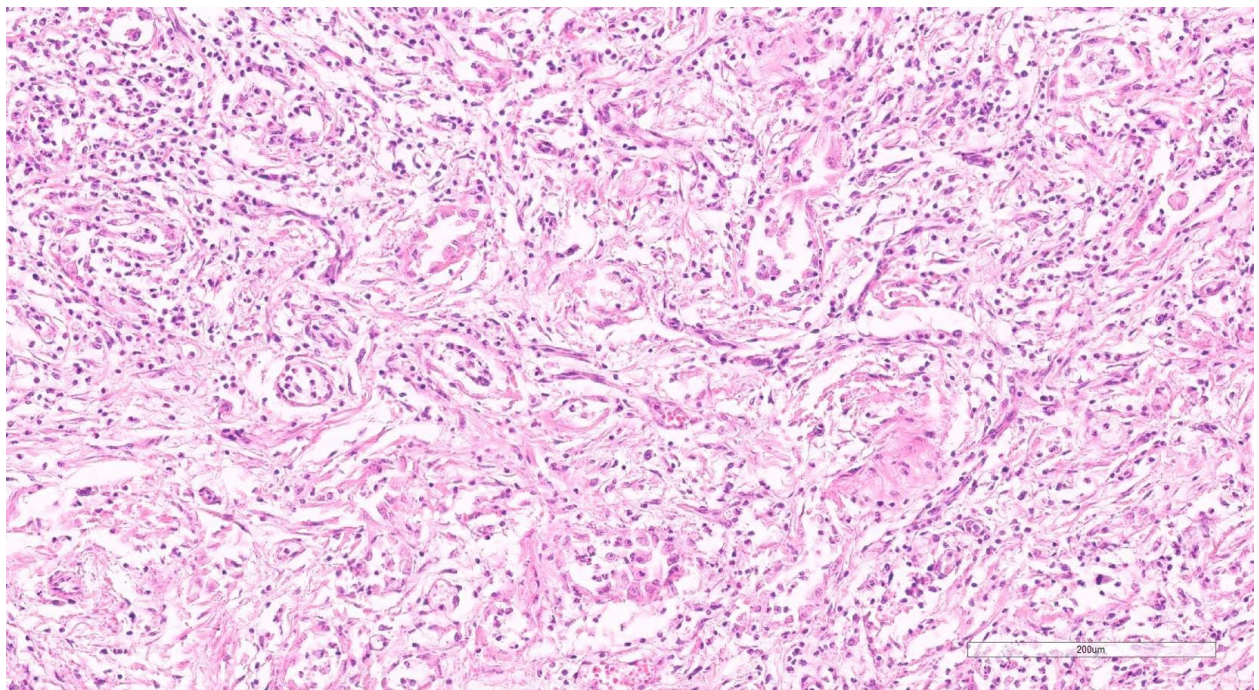


**Figure 2**



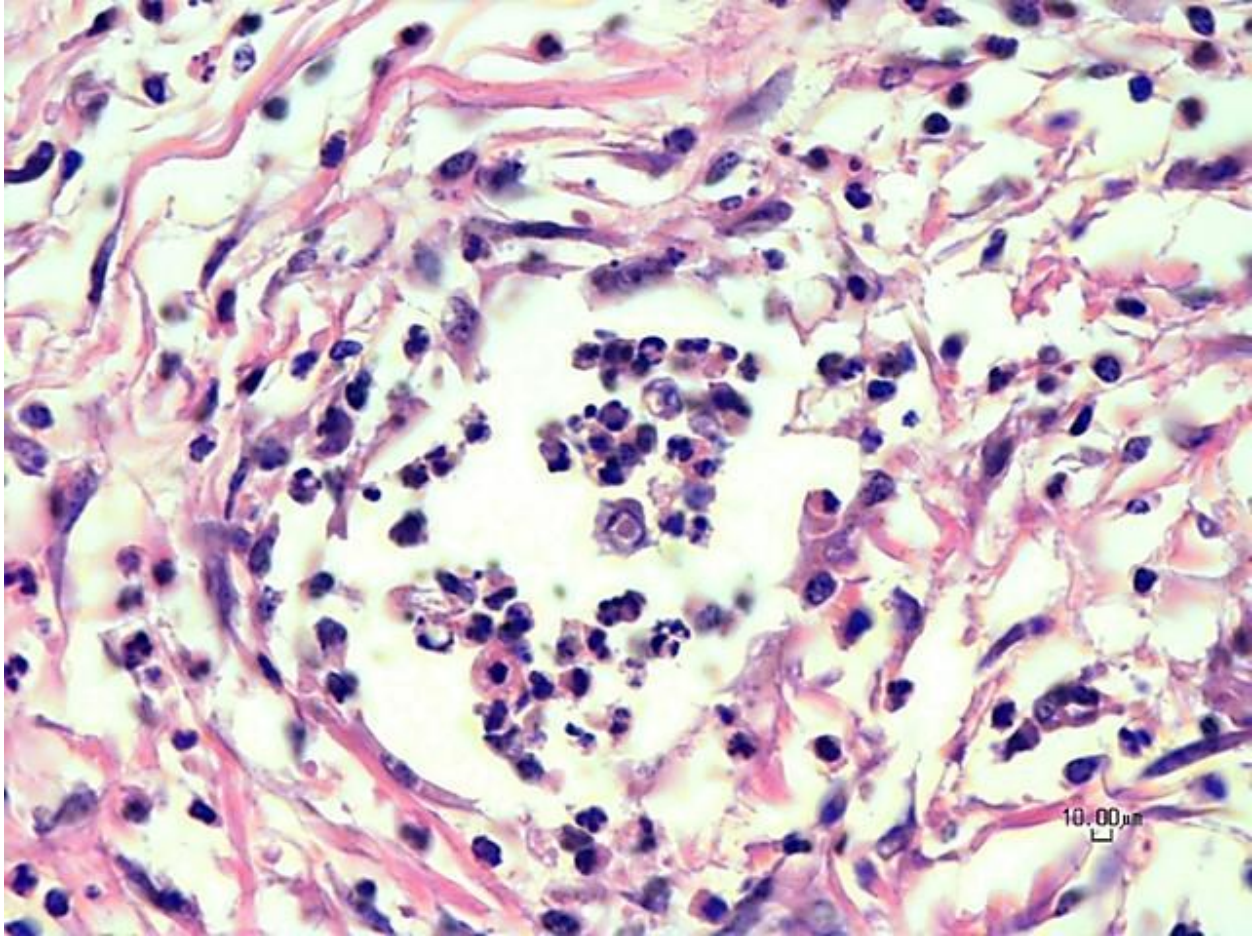


**Figure 3**



**Figure 4**





**Figure 5**

**Follow Up Questions:**

- *Microscopic description*
- *Morphologic diagnosis*
- *Associated infection*
- *Name of the condition*

\*The Diagnostic Exercises are an initiative of the **Latin Comparative Pathology Group (LCPG)**, the Latin American subdivision of The Davis-Thompson Foundation. These exercises are contributed by members and non-members from any country of residence. Consider submitting an exercise! A final document containing this material with answers and a brief discussion will be posted on the CL Davis website ([http://www.cldavis.org/diagnostic\\_exercises.html](http://www.cldavis.org/diagnostic_exercises.html)).

**Associate Editor for this Diagnostic Exercise:** Saulo Pavarini

**Editor-in-chief:** Claudio Barros