

**Managing Editors:**  
J. Leal, DVM, MSc, PhD  
J. Asin, DVM, PhD

[davisthompsonfoundation.org](http://davisthompsonfoundation.org)

**Senior Editor:**  
F.A. Uzal, DVM, MSc, PhD



**Davis-Thompson  
Foundation**

**C.L. DAVIS/S.W. THOMPSON  
DVM FOUNDATION**

A tax-exempt, donative,  
publicly-supported charity  
For the advancement of veterinary  
and comparative pathology

# THE DAVIS-THOMPSON FOUNDATION NEWSLETTER

April

**VOL. 53**



# INSIDE THIS ISSUE

## Monthly cover photograph winner: Rute Noiva

**Institution:** CIISA – Centre for Interdisciplinary Research in Animal Health, Faculty of Veterinary Medicine, University of Lisbon and Associate Laboratory for Animal and Veterinary Sciences (AL4AnimalS), Lisbon, Portugal

Celosomia in a 19 day-old chicken embryo.

This embryo had been exposed to higher incubation temperatures than ideal. However, this malformation, incomplete closure of the coelomic cavity, can occur even under ideal incubation conditions.

-Dr. Katherine D. Watson - Cover Image Editor

-Dr. Donald M. McGavin - Cover Image Composition Analyst

- |           |                                  |           |                                  |
|-----------|----------------------------------|-----------|----------------------------------|
| <b>3</b>  | Message from the CEO             | <b>25</b> | Taller Uruguay                   |
| <b>4</b>  | The Experts' Corner              | <b>26</b> | Seminários do LCPG               |
| <b>6</b>  | JVDI in Focus                    | <b>27</b> | Rewind: Bone Marrow Histopath    |
| <b>8</b>  | Diagnostic Exercise              | <b>28</b> | CLIIC Course 2023                |
| <b>10</b> | GHPN workshop in Pakistan        | <b>29</b> | Seminários do LCPG               |
| <b>12</b> | Spanish Pathology Meeting        | <b>30</b> | CLASS & POLA 2023: Save the Date |
| <b>14</b> | GHPN workshop in Namibia         | <b>31</b> | European Division: Ocular Path   |
| <b>17</b> | Seminar Review                   | <b>32</b> | Reunion Argentina                |
| <b>19</b> | Northeastern Vet Path Conference | <b>34</b> | ISVD Annual Meeting              |
| <b>20</b> | Seminarios del LCPG              | <b>35</b> | BSTP Corner                      |
| <b>21</b> | Free Friday Seminar              | <b>36</b> | BSVP Corner                      |
| <b>22</b> | Seminarios del LCPG              | <b>37</b> | IDEXX CaseConnexx Corner         |
| <b>23</b> | Rewind: Cardiac Pathology        | <b>38</b> | LCPG Corner                      |
| <b>24</b> | Descriptive Course 2023          | <b>42</b> | Miscellaneous Announcements      |

### CEO & CHAIRMAN OF THE BOARD

FRANCISCO A. UZAL, DVM, MSc, PhD

### PRESIDENT

JAY KOEHLER, DVM, PhD

### TREASURER

BRUCE H. WILLIAMS, DVM

### BOARD MEMBERS

AUTRAN, RACHEL

BRAYTON, CORY

BRICE, ANGELA

BRITT, JAMES

BROWN, CORRIE C.

CARREIRA, VINICIUS

CARVALLO, FRANCISCO

CHAPMAN, JENNIFER

CRAIG, LINDEN

DARK, MICHAEL

DE NEGRI, RAFAELA

DEL PIERO, FABIO

DOLENSEK, TAMARA

EDWARDS, JOHN

GENDRON-FITZPATRICK, ANNETTE

JEONG, KYU-SHIK

LANGOHR, INGEBORG

LOMBARDINI, ERIC

LYLE, TIFFANY

MCINNES, ELIZABETH

MCNAMARA, TRACEY S.

MÍRA, MÁNDOKI

OJOK, LONZY

PESAVENTO, PATTY

PRIESTNALL, SIMON

RAC, VLADISLAVA S.

ROSS, TONY

SLAOUI, MOHAMED

STROMBERG, PAUL

ZADOK, RUBEN

## MESSAGE FROM THE CEO

Dear colleagues

Welcome to the April issue of the Davis-Thompson Foundation Newsletter, masterfully prepared by our great Managing Editors, Jeann Leal and Javier Asin. Thank you Jeann and Javier!

As usual, this issue comes with profuse information on all our great training activities around the globe. Look them up here or on our web page (<https://davisthompsonfoundation.org/>). And while you are in our web page, also have a look at our always growing gross and microscopic slide collections (Noah's arkive and Noah's slide box, respectively), our diagnostic exercises and much more.

Of special note, please keep in mind that the Descriptive Veterinary Pathology Course, this year in person only, is coming up very soon (May 31-June 4). This is a wonderful course that provides essential training to trainees preparing for board certification exams and anybody else interested in learning veterinary pathology. Because of the intense and personalized nature of the training, seats are limited: consider registering soon while seats last. See link for registration in page 24 of this newsletter, or go directly to the Events section in the Foundation's website.

This month we continue to proudly present our "Expert's Corner" and we are thankful to the legendary Dr Donald Meuten for his contribution. Thank you Donald.

Looking forward to seeing everyone in one of our seminars.

Kind regards

Paco Uzal

Chief Executive Officer  
Davis-Thompson Foundation



## THE EXPERTS' CORNER

Dr. Francisco Uzal (Paco) asked me to provide an “article” for the DTF newsletter. Topic of my choice- cancer seemed a likely topic but how do you condense cancer into 1000 words? I loved components of my career: private practice, teaching, diagnostics, research, clinical rounds, students, cryptosporidium, hypercalcemia, riding horses and I disliked administration, rules, budgets, CVs, egos, and personnel issues. By the way I was never salaried at over 90 K, I was not worth more. Done with career and in less than 1000 words! Negatives tend to cloud the moment, but long-term memory is positive and therefore I feel incredibly lucky to be... just a “Veterinarian”. If Dr Herb VanKruiningen is reading this he would underscore that conclusion, *darn lucky*. Thank you, Herb. So, I defaulted, as I usually do to what is the least amount of effort I can put forth and fulfill my task. Free flowing stream of consciousness without punctuations, FONT changes as I choose (Dr Richtey), spelling errors abound and no wordsmithing from anyone, then OK. Herein I have fulfilled Dr Uzal’s request, 95% of what follows is opinion and we all have these. However, **please share your opinions with me**, phone, or email as I learn more from others than whatever I have tried to teach. Universities paid me to teach facts, organizations asked for seminars, but I threw the philosophy of life in for free, e.g. this newsletter. Facts and certainty are momentary, elusive, they exist until the next experiment, mutation, publication, DATA are revealed, and most people prefer their own opinion to facts or especially DATA that contradicts their opinion. The take home message Paco, veterinary oncology needs new studies with reproducible methods that are validated into ... FACTS.

**DATA:** Parameters not correlated to clinical outcomes are clinically useless. Sorry, outcome assessments are more important than our parameters, both of which must be standardized and collected accurately. Outcome assessments are our grades of how well we performed. In one day, I could collect 500 cases of tumor X from labs around the world, but none would have outcomes. Cases without accurate outcomes are income but of no prognostic or predictive value. Therefore, a critical requirement for these cases to be archived in vcgp JPC biobank is OUTCOME ASSESSMENT, documented or to be collected. If diagnostic labs have case materials, they would like to donate this could be a tremendous resource, but we must have a commitment to collect outcomes. We will accept a promissory note. “Completed studies”, please donate the materials you used! This must be a better option than **discarding** and it permits an opportunity to have your study validated by a different group of pathologists or clinical pathologists. Another publication. Validation of our oncology studies is sorely needed. We seem to have a philosophy in veterinary oncology that once a study is published the conclusions are accepted and placed into clinical use. In human oncology studies must be validated before they are applied to clinical cases. You should feel complimented, not threatened if someone wanted to validate your study.

## THE EXPERTS' CORNER

I recently contacted multiple authors of publications on tumor X that would have totaled almost 500 cases. All the data sets were “gone; “not retrievable”. What a lost opportunity, send them to vcgp JPC biobank and they will be archived. Let's work together: have vcgp JPC house pathology materials, other biobanks house other samples and merge our efforts and data bases. If you do not want to donate materials then please “register” your cases with the vcgp JPC biobank and we can be the library to catalog tumor cases..... for the world. Multi-institutional studies with meaningful numbers of cases. Think big, think trust. I can hear Dr Cullen now, sounds OK but what about the details, the devil is in the details Meuten. *Suppose I send all my hepatocellular tumors will I ever see them again?* John, this is not Rent -A-Wreck this is THE JPC, your dad's military working for you!

**DATA:** Where is the data that a 10 mm margin is better than a 1 mm margin? Where is the data that tissues are barriers to tumors? Where is the data that tumor heterogeneity does or does not compromise grading systems? Necrosis within a tumor may be the only parameter that we intentionally bias by telling the trimming personnel – avoid areas that look necrotic, and then we assign a numerical score to necrosis? Brilliant! How accurate should our grading systems be? You tell me. Welcome technology, technology replaces technology but not a thinking mind. What *was* the area used to enumerate mitotic figures in ALL our published veterinary oncology publications, you know the publications we use to provide prognostic data in our reports? Which flawed manuscript will you cite? By the way who is responsible for 2.37mm<sup>2</sup> and can we change it? **Jeanne George** and **Fran Moore** and **YES**.....with **DATA**. Tune in to the next newsletter or go to vcgp.org, look up MC and read how to improve and change MC and all our other histologic parameters. We are just getting started and we need your help.

don meuten would like to hear from you!  
919 605 1691  
[don\\_meuten@ncsu.edu](mailto:don_meuten@ncsu.edu)





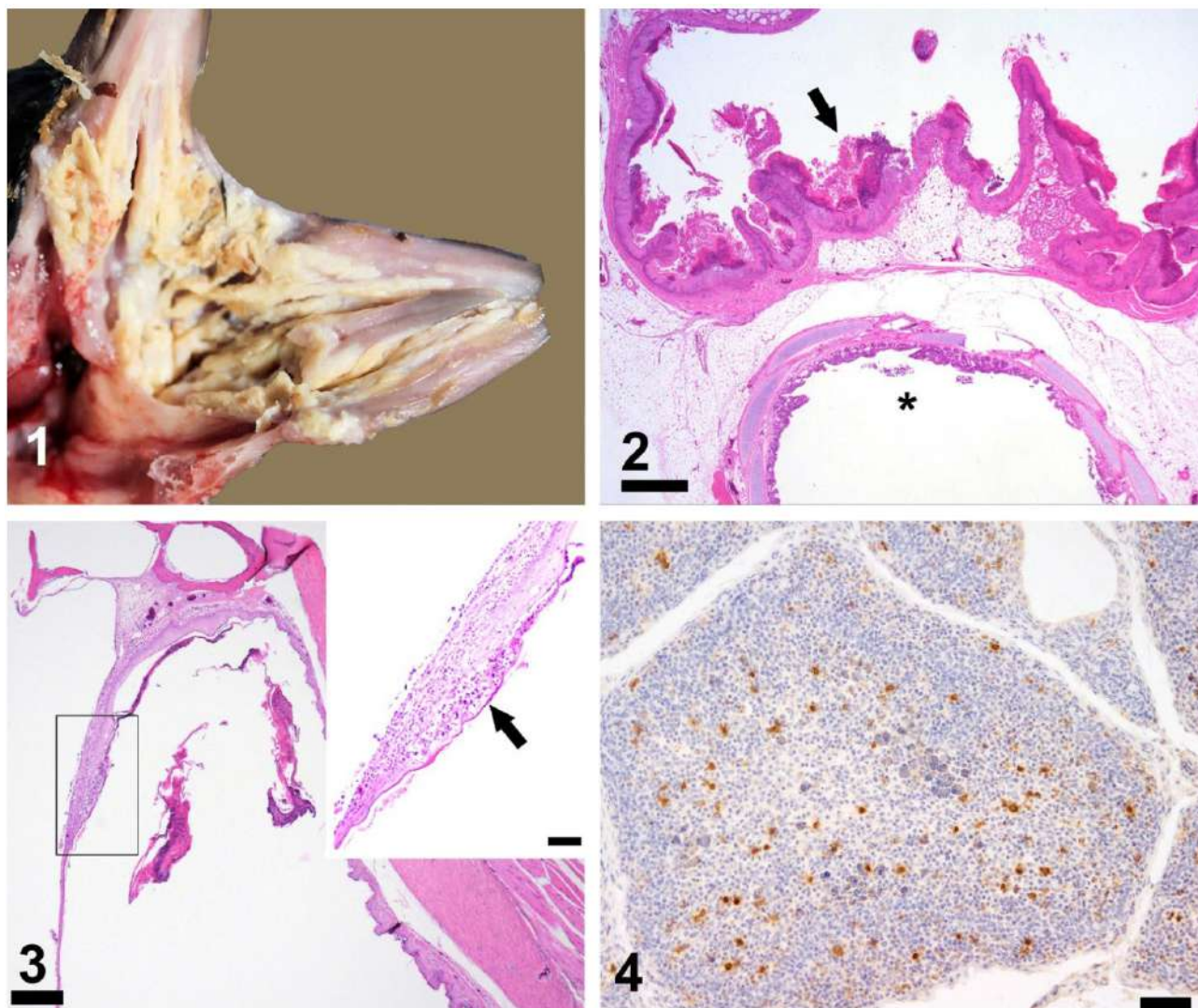
## JVDI IN FOCUS

Our April focus is an open-access article appearing in the upcoming May issue: **“Lesions and viral loads in racing pigeons naturally coinfecting with pigeon circovirus and columbid alphaherpesvirus 1 in Australia”** by Babu K. Nath, Shubhagata Das, Naomie Tidd, Tridip Das, Jade K. Forwood, Shane R. Raid.

J Vet Diagn Invest 2023;35(3). <https://journals.sagepub.com/doi/full/10.1177/10406387231156839>

Columbid alphaherpesvirus 1 (CoHV1) is associated with oral or upper respiratory tract lesions, encephalitis, and occasional fatal systemic disease in naive or immunosuppressed pigeons. Clinical disease is often reported with CoHV1 and coinfecting viruses, including pigeon circovirus (PiCV), which may cause host immunosuppression and augment lesion development. A natural outbreak of CoHV1 and PiCV coinfection occurred in a flock of 60 racing rock pigeons (*Columba livia*), in which 4 pigeons succumbed within 7 d of clinical onset. Lesions included suppurative stomatitis, pharyngitis, cloacitis, meningitis, and tympanitis, with eosinophilic intranuclear inclusion bodies consistent with herpesviral infection. In addition, large numbers of botryoid intracytoplasmic inclusion bodies were present in the skin, oral mucosa, and bursa of Fabricius, suggestive of circoviral infection, which was confirmed by immunohistochemistry. The concurrent viral load of CoHV1 and PiCV was high in liver, oropharynx, and bursa of Fabricius. We found PiCV in oro-cloacal swabs from 44 of 46 additional birds of variable clinical status, PiCV alone in 23 birds, and coinfection with CoHV1 in 21 birds. Viral copy numbers were significantly higher ( $p < 0.0001$ ) for both viruses in clinically affected pigeons than in subclinical qPCR-positive birds. The CoHV1-induced lesions might have been exacerbated by concomitant PiCV infection.

# JVDI IN FOCUS



Figures 1–4. Clinical signs and histopathologic findings in affected young pigeons. Figure 1. Severe diphtheritic stomatitis. Figure 2. Oropharynx, esophagus, and trachea (\*), with severe diffuse thickening of the oral mucosa (arrow). Bar = 1 mm. Figure 3. External ear canal and tympanic membrane with layers of serocellular exudate in the lumen as well as focal-to-diffuse thickening. Bar = 200  $\mu$ m. Inset: infiltration of the tympanic membrane with heterophils and macrophages (arrow). Bar = 200  $\mu$ m. Figure 4. Widespread pigeon circovirus (PiCV) antigen in the bursa of Fabricius. Polyclonal anti-PiCV capsid protein antibody immunohistochemistry. Bar = 50  $\mu$ m.



## DIAGNOSTIC EXERCISE



**Case #:** 202; **Month:** December; **Year:** 2022

**Contributors:** Jessica Lambert<sup>1</sup>, Veterinary student; Danielle Meritet<sup>1</sup>, DVM, MS, DACVP; Kimberly Hallowell<sup>1</sup>, DVM; Bonnie Brenseke<sup>1,2</sup>, DVM, PhD, DACVP. <sup>1</sup>North Carolina State University College of Veterinary Medicine, NC. <sup>2</sup>Campbell University, NC [jrlamber@ncsu.edu](mailto:jrlamber@ncsu.edu)

**Clinical History:** A 16-year-old warmblood gelding presented to the equine medicine service for a two-month history of fever and weight loss. Complete bloodcount revealed a moderate neutrophilic leukocytosis, mild lymphopenia, and mild hyperfibrinogenemia. Pulmonary nodules were seen on imaging. Treatment with antibiotic, antiviral, and anti-inflammatory medications yielded some initial improvement; however, due to intractable fever and clinical decline the horse was euthanized.

**Necropsy Findings:** The lung had numerous firm pale tan solid nodules (Fig. 1). Nodules ranged from <1 cm in diameter to 6.5 x 6 x 3.5 cm. The right pulmonary lobes was more severely affected, and the majority of nodules were in the caudal lobes. Approximately 220 mL of dark red watery fluid was present in the pericardial sac.



Figure 1





# DIAGNOSTIC EXERCISE

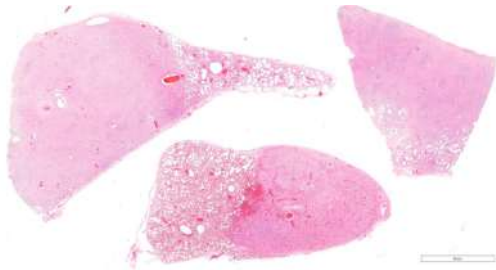


Figure 2

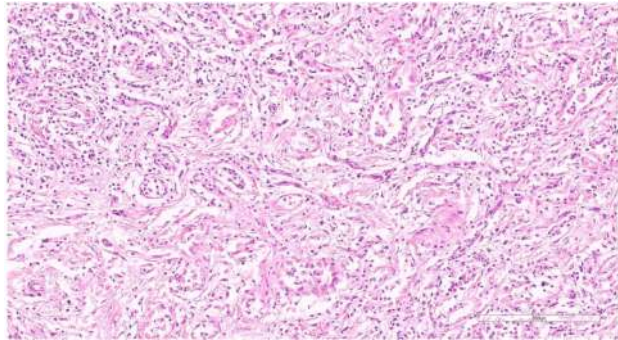


Figure 3

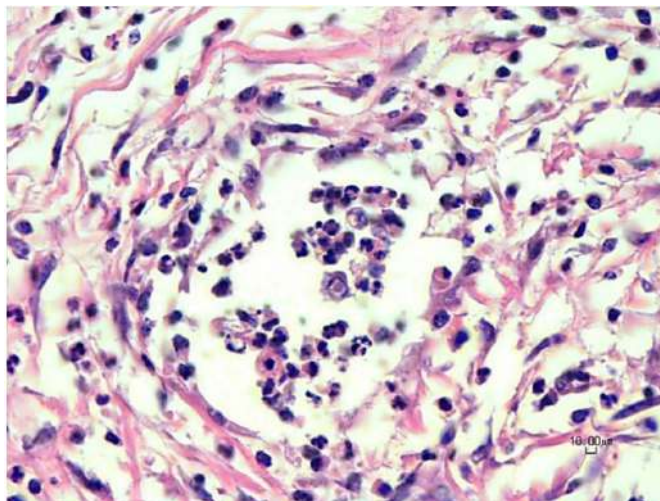


Figure 4

## Follow-up questions:

- Microscopic description
- Morphologic diagnosis
- Associated infection
- Name of the condition

**Associate Editor for this Diagnostic Exercise:** Saulo Pavarini

**Editor-in-chief:** Claudio Barros

[Click here for answers](#)

## GHPN WORKSHOP IN PAKISTAN



Davis-Thompson  
Foundation



Dr. Ishtiaq Ahmed, Professor of Pathology at the University of Veterinary and Animal Sciences (UVAS) in Pakistan, and member of the Global Health Pathology Network, organized the fourth international workshop on pathology of animal diseases, which was held in early March, in Lahore, Pakistan. UVAS Lahore is the oldest veterinary school in Asia, established by the British in 1882, and running continuously since then. The topics for this workshop, which were previously selected by the participants, included ruminant neurologic diseases, ruminant reproductive diseases, and calf diarrhea.

Dr. Corrie Brown facilitated the workshop, with online (Zoom) help from Dr. Donal O'Toole, University of Wyoming, who was unfortunately unable to attend due to unforeseen visa delays. Case scenarios were prepared prior to the workshop, courtesy of Dr. Brown, Dr. O'Toole, and Dr. Raquel Rech (Texas A&M University).





## GHPN WORKSHOP IN PAKISTAN

All activities were interactive and participatory. Necropsy practice was included and various communication exercises incorporated. At the end of the workshop, the Department of Pathology at UVAS Lahore, planted a tree in honor of Dr. Brown, who has attended and helped to facilitate all four of the workshops held to date. She hopes to return often to see her tree grow, and enjoy all that Lahore and UVAS have to offer!



UVAS Department of Pathology  
plants a tree for Corrie!



Group work



Group work



Dr. O'Toole shares wisdom over Zoom

## **2ND SPANISH PATHOLOGY MEETING**

### **Davis Thompson Foundation European Division**

#### **2nd Spanish Pathology Meeting – Pathology of Pigs and Ruminants**

**School of Veterinary Sciences, University of Lleida, Spain 30-31st March 2023**

Course participants met in the beautiful historic Catalan city of Lleida, Spain for our second, pandemic delayed, Spanish meeting. Attendees from seven countries were treated to a series of excellent lectures from Dr Joaquim Segales, Autonomous University of Barcelona, and Dr Paco Uzal, UC Davis and Foundation CEO. Dr Segales opened discussing the importance of a good understanding of pig production and life stages when investigating diseases and followed with a series of beautifully illustrated case studies, each focusing on specific set of clinical presentations from respiratory to neurological signs. Dr Uzal captivated the audience with much participation and lively discussions in a 'tour de force' of ruminant gastrointestinal pathology including a comprehensive overview of clostridial diseases and specific diagnostic testing. Our local hosts, Drs Gustavo Ramirez and Jessica Molin, University of Lleida, provided an excellent comfortable environment and plentiful catering with Spanish delicacies galore. On the second afternoon we all moved to the new and well-equipped necropsy room for a practical session conducting farm animal necropsies expertly led by Drs Uzal and Ramirez. Participants were able to put theory into practice and discuss findings with experts. Whilst we could have held this meeting online – what we would have missed is the ability to actively participate in case discussions, ask questions, interact with colleagues, discuss shared challenges, make new friends and meet old colleagues and, of course, undertake necropsies with experts. In the warm spring evening, participants explored the ancient La Seu Vella cathedral and Arabic fortress situated on a promontory overlooking the city and river Segre with spectacular views to the Pyrenees. Over a tapas dinner the discussions continued with troubleshooting of challenging diagnostic cases and a very heated debate on the correct approach to driving around Spanish roundabouts!

Prepared by Drs Simon Priestnall and Alejandro Suarez-Bonnet,  
DTF European Division



# 2ND SPANISH PATHOLOGY MEETING



## GHPN WORKSHOP IN NAMIBIA



### **Workshop on Pathology and Basic Mechanisms of Disease University of Namibia-School of Veterinary Medicine**

**March 28-30, 2023**

by Dr. Derron "Tony" Alves

For the first time in southern Africa, the Global Health Pathology Network (GHPN), in conjunction with and supported by the Davis-Thompson Foundation (DTF), conducted a three-day workshop held March 28-30, 2023 on "Pathology and Basic Mechanisms of Disease" at the University of Namibia's School of Veterinary Medicine (UNAM SoVM). The lead GHPN trainers for this didactic, interactive, and case-based scenario workshop were Drs. Derron "Tony" Alves, Kelsey Fiddes, and Javier Asin along with onsite facilitators Dr. John Yabe, senior lecturer and head of pathology, and Dr. Douglas Mudimba, senior lecturer, at UNAM's SoVM. Up to 36 registered clinical veterinarians, pathologists, and paraprofessionals from academia, government, and the private sector attended the workshop which accounted for continuing medical education credits for attendees through the Veterinary Association of Namibia (VAN) and the Namibian Veterinary Council.

Over the course of the three days, using the adult learning theory and concepts, attendees gathered and participated in group interactive and practical sessions. In the morning, participants worked in small groups (5-7 individuals per group each with varied professional backgrounds), reviewing general pathologic processes applicable to the clinical practitioner and seasoned pathologist; as well as discussed select diseases of importance affecting Namibia's cattle, small ruminant, poultry, and small animal population. All morning discussions were presented as case scenarios, with questions embedded, allowing attendees to actively participate, develop differential diagnoses, and annotate ideas and discussion points using flip charts followed by case review and entire classroom discussion.

## GHPN WORKSHOP IN NAMIBIA

During the afternoon of Day 1 and 2, trainers led a highly anticipated sheep and goat postmortem examination (necropsy) laboratory, which included a demonstration by Dr. Asin on proper sampling techniques for both rabies and scrapie. Additionally, two standalone lectures were provided by UNAM faculty members during the workshop: (1) Dr. Yabe expertly highlighted the growing capabilities of UNAM SoVM's pathology diagnostic service, which included real case submissions from local dogs and cats; and (2) Dr. Yvonne Hemberger (senior lecturer, Veterinary Public Health) presented a 45-minute keynote lecture on classic gross lesions observed in abattoirs in Namibia.

Although the formal pathology workshop concluded after three days, on the morning of the fourth day Drs. Alves, Fiddes, and Asin participated in two canine and an equine postmortem examination led by Dr. Yabe and Dr. Mudimba. This exciting morning allowed the three visiting pathologists to actively engage with and co-train 5th year veterinary students as they participated as prosectors in the postmortem examinations. As a culmination for this wonderful week of workshop training, the staff clinician and representative for student development asked Dr. Alves, Fiddes, and Asin to provide three 15-minute oral case presentations to the entire UNAM SoVM student body and teaching staff. These cases were presented to over 125 participants in a lively standing room only lecture hall.

This first-of-a-kind pathology workshop in this locale was an astounding success as demonstrated through post-workshop comments and after action reviews. The overwhelming success could not have happened without the team Dr. Yabe assembled prior to and during the workshop to include the behind scenes efforts of Dr. Andrea Klingelhoefter (Veterinary Association of Namibia) and Ms. Jennifer Haihambo (Dean's office). The GHPN and DTF look forward to continued engagement with Dr. Yabe and the rest of UNAM-SoVM's highly motivated pathology staff!



# GHPN WORKSHOP IN NAMIBIA



Group photo of all the participants at the Neudamm Campus



Participants engaging in scenario-based, group discussions



Practical session at the postmortem room



Dr. Alves recording the different backgrounds and roles of the participants



Dr. Yabe introducing the UNAM SoVM histopathology services



# SEMINAR REVIEW



**SEMINARIOS DE HISTOPATOLOGÍA DEL LCPG**

**ENFERMEDADES DEL APARATO GASTROINTESTINAL**

**Dr. Paco Uzal**

Excelente iniciativa, excelente interacción del organizador con los disertantes y la audiencia. La modalidad resultados sumamente interesante.

Fue super útil y didáctica. Se afianzaron conocimientos y aprendí algunos conceptos.

Excelente. Muchas gracias al profesor Uzal por su predisposición a enseñar.

Es la primera vez que participo en este seminario y me ha parecido excelente.

Enhorabuena por la iniciativa.

Excelentes casos y comentarios, siempre aprendo mucho!

Continuen organizando estos seminarios, son muy buenos.



# SEMINAR REVIEW



## SEMINARIOS DE HISTOPATOLOGÍA DEL LCPG

CASOS MISCELÁNEOS





**Dr. Francisco  
Carvallo**

Los cuatro valientes voluntarios hicieron un trabajo fenomenal al describir las láminas digitales proporcionadas por el Dr. Carvallo. Hablaron sobre enfermedades de mamíferos y aves después de que el Dr. Carvallo compartió imágenes macroscópicas de cada caso. ¡Tienes la oportunidad de verlo en YouTube!





# NORTHEASTERN VET PATH CONFERENCE

## 2023 NORTHEASTERN VETERINARY PATHOLOGY CONFERENCE

Infectious diseases and vascular lesions

APRIL 15-16, 2023



Davis-Thompson  
Foundation

**\$50**  
or free for  
presenters



**KELSEY R. FIDDES**  
DVM, DACVP, DACVPM  
COURSE DIRECTOR



**PATRICIA  
PESAVENTO**  
DVM, PHD, DACVP



**JEY KOEHLER**  
DVM, PHD, DACVP

**Keynote speakers +  
case presentations**

**Presenters submit  
by: March 31st**



**Smithsonian**  
National Zoological Park  
Conservation Biology Institute

**in person @ Smithsonian National Zoological and  
Conservation Biology Institute, Washington, DC**

[Click here to register](#)

# SEMINARIOS DE HISTOPATOLOGÍA DEL LCPG



RONDAS DE HISTOPATOLOGÍA  
DEL LCPG



Davis-Thompson  
Foundation

## PATOLOGÍA ORAL DE PERROS Y GATOS

**Jueves 20 de Abril, 2023**

**10:30 AM - 11:30 AM CDT**



**Federico Cifuentes**

MV, PhD, DACVP

[Click here to register](#)



# FREE FRIDAY SEMINAR: COOL CASES FROM KENTUCKY

Free Friday Seminar  
April 28, 2023  
11:00-12:30 CDT



## Cool cases from Kentucky

*Uneeda Bryant, DVM*



Davis-Thompson  
Foundation

[Click here to register](#)

# SEMINARIOS DE HISTOPATOLOGÍA DEL LCPG



RONDAS DE HISTOPATOLOGÍA  
DEL LCPG



Davis-Thompson  
Foundation

## ENFERMEDADES VIRALES

**Jueves 18 de Mayo, 2023**

**10:30 AM - 11:30 AM CDT**



**Javier Asin**  
DVM, PhD, DECVP

[Click here to register](#)

# REWIND: CARDIAC PATHOLOGY



Davis-Thompson  
Foundation

REWIND 

**Free Friday Seminar**

**Friday, May 19, 2023**

**Rewinding from May 2021**

**11am-12:30pm CDT**

**Cardiac pathology:  
clinicopathologic  
correlates**

**Taryn Donovan**  
**DVM, DACVP**



[Click here to register](#)

# DESCRIPTIVE COURSE 2023



Davis-Thompson  
Foundation



UNIVERSITY  
OF MINNESOTA

## DESCRIPTIVE VETERINARY PATHOLOGY COURSE 2023

MAY 31–JUNE 4

**IN-PERSON ONLY!**



**Jey Koehler**  
DVM, PhD, DACVP



**Linden Craig**  
DVM, PhD, DACVP



**Patty Pesavento**  
DVM, PhD, DACVP

*How to describe  
and interpret gross,  
micro, EM, ISH/IHC/PCR*

*FIVE mock tests, MCQ and  
descriptions!*



UNIVERSITY OF MINNESOTA , CVM

**REGISTER  
NOW!**



[Click here to register](#)



# TALLER URUGUAY

**TALLER DE NECROPSIA Y  
PATOLOGÍA MACROSCÓPICA DE  
LA SUBDIVISIÓN URUGUAYA DE LA  
FUNDACIÓN DAVIS-THOMPSON**



Davis-Thompson  
Foundation

**10 de junio de 2023**

**U\$S 50- U\$S 100**



**Francisco Uzal**



**Franklin Riet-Correa**



**Fernando Dutra**



**Lourdes Adrien**



**José Verdes**



**Rodolfo Rivero**



**Carolina Matto**



**JORNADAS  
URUGUAYAS BUIATRIA**  
8 Y 9 DE JUNIO / 2023 - PAYSANDÚ



Facultad de Veterinaria  
Universidad de la República  
Uruguay



[Click here to register](#)

# SEMINÁRIOS DE HISTOPATOLOGIA DO LCPG



RODADAS DE  
HISTOPATOLOGÍA DA LCPG



Davis-Thompson  
Foundation

## PATOLOGIA OCULAR

Quinta-feira, 15 de Junho, 2023

10:30 AM - 11:30 AM CDT

INTERATIVO



VIRTUAL

EM PORTUGUÊS



**Rachel Neto**  
DVM, MS, DACVP

[Click here to register](#)

# REWIND: BONE MARROW HISTOPATH



Davis-Thompson  
Foundation

REWIND 

**Free Friday Seminar**

**Friday, June 16, 2023**

**Rewinding from March 2022**

**11am-12:30pm CDT**

## Bone Marrow Histopathology

**Rose Raskin**  
**DVM, PhD, DACVP**



[Click here to register](#)



# CLIIC COURSE 2023



Davis-Thompson  
Foundation



June 26-30, 2023

## CURRENT LITERATURE AND IMAGE INTERPRETATION COURSE

IN-PERSON @



THE UNIVERSITY OF  
TENNESSEE  
KNOXVILLE



**LINDEN CRAIG**  
DVM, PHD, DACVP



**KIM NEWKIRK**  
DVM, PHD, DACVP



**MICHELLE DENNIS**  
DVM, PHD, DACVP



**DENAE LOBATO**  
DVM, PHD, DACVP



**WESLEY SHELEY**  
DVM, PHD, DACVP

[Click here to register](#)

# SEMINÁRIOS DE HISTOPATOLOGIA DO LCPG



RODADAS DE  
HISTOPATOLOGÍA DA LCPG



Davis-Thompson  
Foundation

## CASOS VARIADOS

Quinta-feira 20 de Julho, 2023

10:30 AM - 11:30 AM CDT

INTERATIVO



VIRTUAL

EM PORTUGUÊS



**Rafaela De Negri**  
DVM, MSc

[Click here to register](#)

# CLASS & POLA 2023: SAVE THE DATE

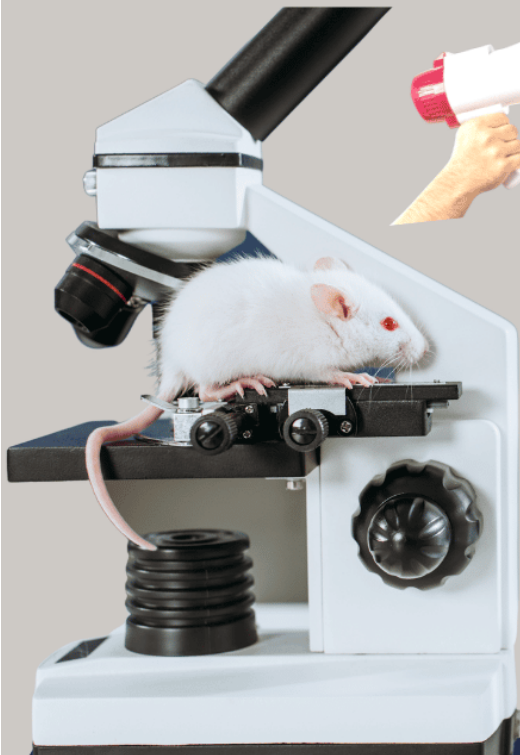


Davis-Thompson  
Foundation



**Penn**  
UNIVERSITY of PENNSYLVANIA

SAVE  
THE DATE!



**2023**

**CURRENT LAB ANIMAL  
SCIENCE SEMINAR (CLASS)  
& PATHOLOGY OF LAB  
ANIMALS (POLA)**

<b>CLASS</b>	<b>POLA</b>
<b>JULY 22-23</b>	<b>JULY 24-28</b>

**IN- PERSON @ UPENN**

[Click here for more  
information](#)



# EUROPEAN DIVISION: OCULAR PATHOLOGY



Davis-Thompson  
Foundation

28-29  
AUGUST  
2023

## EUROPEAN DIVISION SYMPOSIUM 2023 OCULAR PATHOLOGY

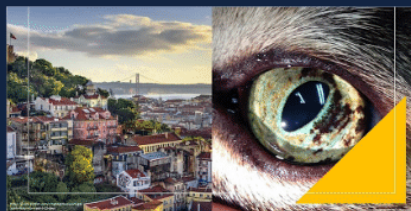


**CAROLINA NARANJO FREIXA**  
LV, DACVP, DECVP, PHD



**EMMA SCURRELL**  
BVSC DIPACVP MRCVS  
RCVS RECOGNISED SPECIALIST  
IN VETERINARY PATHOLOGY

LISBON, PORTUGAL



[Click here to register](#)

# REUNIÓN ARGENTINA DE PATOLOGÍA VETERINARIA



Davis-Thompson  
Foundation



Ministerio de Agricultura,  
Ganadería y Pesca  
Argentina

Guarda  
la fecha

## Octubre 2023

S	M	T	W	T	F	S
1	2	3	4	5	6	7
8	9	10	11	12	13	14
15	16	17	18	19	20	21
22	23	24	25	26	27	28
29	30	31				

### 17° Seminario de la Fundación Davis-Thompson con la XIII Reunión Argentina de Patología Veterinaria 2023

#### DISERTANTES:

Fernando Dutra Quintela, David Driemeier,  
Francisco A. Uzal, Hugo Ortega y  
Claudio Barbeito

MESA REDONDA: Diseño de experimentos  
en patología Animal.



EN PERSONA

UNIVERSIDAD CATOLICA DE SALTA. Campus Castaños SN, Salta.

Click here for more  
information

# REUNIÓN ARGENTINA DE PATOLOGÍA VETERINARIA



Davis-Thompson  
Foundation



Ministerio de Agricultura,  
Ganadería y Pesca  
Argentina

## 17º Seminario de la Fundación Davis-Thompson con la XIII Reunión Argentina de Patología Veterinaria 2023

### Taller de Histopatología

### Convocamos a presentar sus casos interesantes



**Fecha de presentación: 6 de octubre**  
**Fecha final para el envío de casos: 30 de abril**



EN PERSONA

UNIVERSIDAD CATOLICA DE SALTA. Campus Castañares SN, Salta.

[Click here for more  
information](#)



# ISVD ANNUAL MEETING



## International Society of Veterinary Dermatopathology (ISVD)

24<sup>th</sup> Annual Meeting

Satellite meeting of the ECVF/ESVP/ESVCP/ECVPV congress

Lisbon, Portugal, 30<sup>th</sup> of August 2023

### PROGRAM

7.30 - 8.15 *	<b>Registration</b>
8.15	<b>Welcome</b> Dr. Stefano Borio, President ISVD
8.30 - 9.30	<b>Plenary Lecture ISVD part 1</b> Chairperson: Dr. Stefano Borio Diseases of the mucocutaneous junction and nasal planum – pathogenic, clinical, and histopathological aspects Dr. Monika Welle, University of Bern, Switzerland
9.30 - 10.00	<b>Break</b>
10.00 - 11.00	<b>Plenary Lecture ISVD part 2</b> Chairperson: Dr. Stefano Borio Diseases of the mucocutaneous junction and nasal planum – pathogenic, clinical, and histopathological aspects Dr. Monika Welle, University of Bern, Switzerland
11.00 - 12.00	<b>Supportive Lecture ISVD</b> Chairperson: Dr. Chiara Bracheler Lies of lesions – Mucocutaneous diseases Dr. Karen Trainor, Innovative Vet Path, Kansas City, USA Dr. Dominique Wiener, Texas A&M University, Texas, USA
12.00 - 13.30	<b>Lunch</b>
13.30 - 14.30	<b>Clinicopathological correlations</b> Moderator: Dr. Monika Welle 4. Dr. Kelly Keating, Animal Dermatology Group, California, USA and Dr. Verena Affolter, University of California, Davis, USA 5. Dr. William Craft, University of Florida, USA and Dr. Stefano Borio, University of California, Davis, USA 6. Dr. Karen Trainor, Innovative Vet Path, Kansas, USA and Dr. Roubina Honarchian, Metropolitan Animal Specialty Hospital, Los Angeles, California, USA
14.30 - 15.30	<b>Mystery slide session</b> Moderator: Dr. William Craft 5. Dr. David Gardiner, Zoetis Reference Laboratories, Louisville, Kentucky, USA 6. Dr. Barbara McMahon, IDEXX Reference Laboratories, Wyoming, USA 7. Dr. Karen Trainor, Innovative Vet Path, Kansas City, Kansas, USA 8. Dr. Ana Resendes, Universidade Lusófona, Lisbon, Portugal
15.30 - 15.45	<b>Histology quiz</b> Moderator: Dr. Dominique Wiener
15.45 - 16.15	<b>Break</b>
16.15 - 16.45	<b>ISVD Grant Presentation</b> Chairperson: Dr. Stefano Borio, University of California, Davis, USA Unravelling the spatial profile of DNA Methylation in canine malignant melanoma Alice Musi, Doctorate Student, Faculty of Veterinary Medicine, University of Teramo, Italy
16.45 - 17.45	<b>ISVD Annual General Meeting (AGM) - Members only</b>

\* Please note that times of lectures and breaks still could change

[Click here to register](#)

# BSTP CORNER

Future BSTP events are due to take place as follows:

**14th – 23rd March 2023**

**Virtual CES 7 - Infectious diseases of laboratory animals**

**11th – 20th July 2023**

**Virtual CES 8 - Nervous System**

November 2023

38th Annual Scientific Meeting & AGM

March 2024

CES 9 - Urinary System

July 2024

CES 10 - Digestive System

November 2024

39th Annual Scientific Meeting & AGM

March 2025

CES 11 - Cardiovascular System

July 2025

CES 12 - Endocrine System

November 2025

40th Annual Scientific Meeting & AGM

March 2026

CES 13 - Lymphoid & Haematopoietic Systems

July 2026

CES 14 - Musculoskeletal System & Skin

November 2026

41st Annual Scientific Meeting & AGM

The order of the CES will depend on the availability of high-quality speakers who are world experts in their particular field to present at the relevant meeting. Details of future meetings are correct at the time this booklet is generated, the BSTP will not be held responsible for any changes to dates, topics and venues of these meetings.



For registration and more information about the events, visit the BSTP website:  
<https://www.bstp.org.uk/events/bstp-events/>

Wednesday 24th May - Wills Conference Centre  
Wills Hall, Parry's Lane, Stoke Bishop, Bristol BS9 1AE

9.15 **Welcome talk** - Benedetta Amato (DMV MRCVS PhD)  
9.30 **Anatomy, Physiology and Immunology in Camelids: spot the differences** - Dominic Harrison (BVSc MRCVS)  
10.00 **TB or not TB: a field perspective** - Andrea Turner (Vet MB Dip ECBHM MRCVS)  
10.30 **TB case management and policy** - Speaker to be confirmed  
11.10 **TB serological tests in South American Camelids** - Shelley Rhodes

11.55 **Parasites in Camelids: presenting clinical signs and diagnostics** - James Barnett (BSc(Hons), BVSc MRCVS)

12.25 **Parasites in Camelids: treatment and management** - Andrea Turner

12.55 **Clinical Case collection** - Andrea Turner

15.00 **PME as valuable diagnostic tool** - Mick Millar (BVSc MRCVS MSc)

15.30 **Scanning Surveillance in South American Camelids - Miscellaneous and Exotic Farmed Species ED1500** - David Jorge (BSc(Hons) DVM MRCVS)

16.10 Clinical pathology diagnosis of common New World camelid diseases - Susan Tornquist (DVM, MS, PhD, Dip. ACVP)

17.00 Common diseases of alpacas and llamas (in North America) across the lifespan from fetus to geriatric patient - Christiane Loefer (Dr. Med. Vet., PhD, DACVP)

17.50 Discussion of cases/case sharing



	Early bird (until 14/04)	Full prices
BSVP member	100	150
BSVP member (trainee)	50	60
Non-BSVP	150	200
Non-BSVP (trainee)	75	100

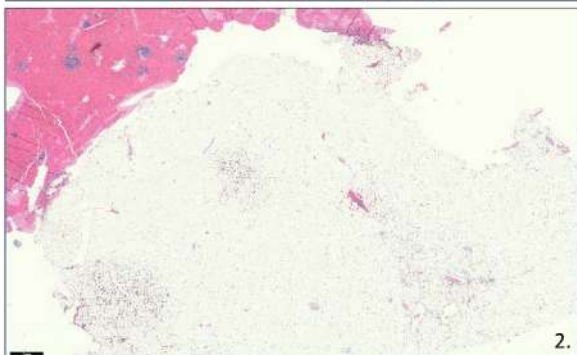
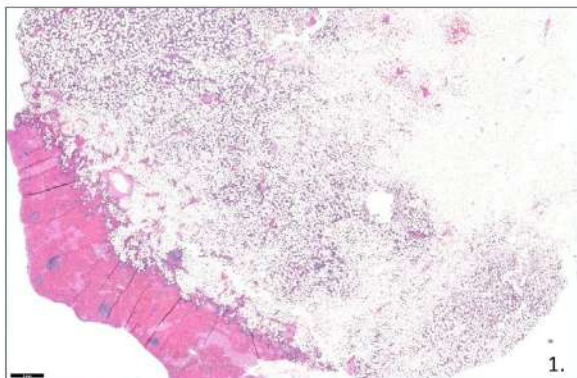
Click here for more information



# IDEXX CASECONNEX CORNER

**Signalment:** 12-year-old, female spayed, feline

**Source/ History:** Multiple masses found on spleen found during abdominal explore. See cytology results, radiographs sent in prior. Mass felt in L side of abdomen at exam, no abnormal behaviors noted just the distention was seen.

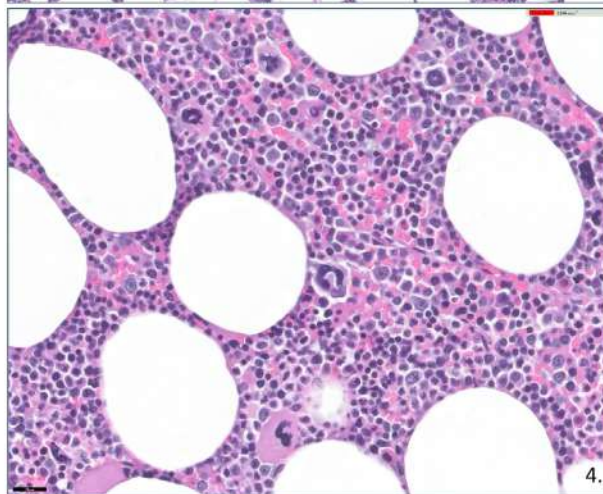
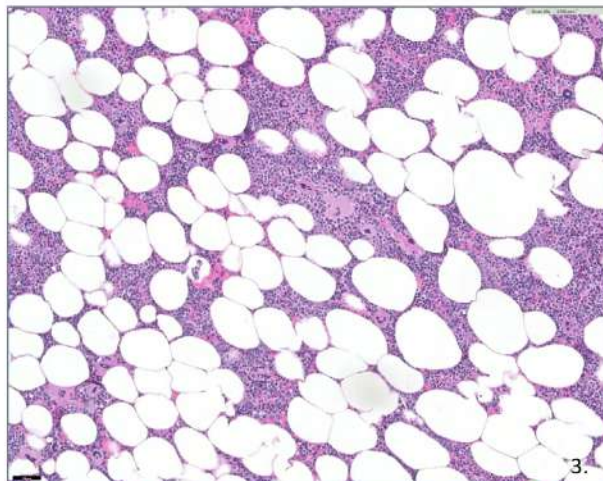


## Microscopic Description:

Multifocally within the spleen and expanding the splenic parenchyma are variably sized, nonencapsulated but well-demarcated, nodules composed of sheets of well differentiated adipocytes mixed with variable numbers of mature and immature hematopoietic cells. The hematopoietic cells include granulocytic, erythrocytic and megakaryocytic series. There are a few scattered residual lymphoid follicles within the masses. In the adjacent unaffected splenic red pulp, there is moderate to marked congestion.

## Microscopic Interpretation:

Spleen: Myelolipomas, multifocal



Figures 1 and 2. (1X magnification, H&E stain) Expanding the splenic parenchyma are variably sized, nonencapsulated but well-demarcated, nodules composed of sheets of well differentiated adipocytes mixed with variable numbers of hematopoietic cells. Figures 3 (20X magnification, H&E stain) and 4. (60X magnification, H&E stain) The hematopoietic cells include granulocytic, erythrocytic and megakaryocytic series.

## Comments:

Myelolipomas are benign tumors composed of adipose and variable amounts of hematopoietic tissue, occasionally found in the spleens of dogs and domestic cats. Myelolipomas can also be found in the liver, and are less commonly reported in the adrenal gland, omentum, epidural spinal canal and eye. Myelolipomas have been reported in other species including cattle, birds, non-human primates, ferrets, rats and large exotic felids such as cheetahs. Myelolipomas are often identified incidentally and not typically associated with clinical signs. Splenectomy is expected to be curative. Metastasis to other organs has not been reported.

Reference: Meuten, ed. (2017), Tumors in Domestic Animals, 5th ed., 317.

Case by  
Joseph Malatos, DVM, DACVP

**IDEXX**

**CaseConnexx**

Visit [CaseConnexx.com](https://www.caseconnexx.com) to Register

# LCPG CORNER

## LCPG & DTF ACTIVITIES IN LATIN AMERICA

Country	Name of Seminar	Dates	Place/University	Speakers	Organizers
<b>Argentina</b>	XIII RAPAVE/17 <sup>th</sup> Argentinean Seminar of C.L. Davis - S.W. Thompson Foundation.	Oct 4-6	Facultad de Ciencias Agrarias y Veterinarias, Universidad Católica de Salta	Fernando Dutra David Driemeier, Francisco Uzal	Juan Micheloud
<b>Brasil</b>	Brazilian Symposium of the C.L. Davis - S.W. Thompson Foundation and National Pathology Meeting - ENAPAVE	Jul 17-20	João Pessoa, Paraíba, - venue to be determined	TBD	ABPV (Associação Brasileira de Patologia Veterinária)
	Latin American ROADSHOW of the C.L. Davis - S.W. Thompson Foundation (Brazil, Chile, Mexico, Peru)	Oct 23-Nov 3	TBD	Marti Pumarola	Francisco Carvalho, Francisco Uzal
<b>Chile</b>	Latin American ROADSHOW of the C.L. Davis - S.W. Thompson Foundation (Brazil, Chile, Mexico, Peru)	Oct 23-Nov 3	TBD	Marti Pumarola	Francisco Carvalho, Francisco Uzal
	8th Chilean meeting of veterinary histopathology	TBD	TBD	TBD	Carlos Flores
<b>México</b>	Latin American ROADSHOW of the C.L. Davis - S.W. Thompson Foundation (Brazil, Chile, Mexico, Peru)	Oct 23-Nov 3	TBD	Marti Pumarola	Francisco Carvalho, Francisco Uzal
<b>Costa Rica</b>	Descriptive Veterinary Pathology Course (Spanish version)	Dec 15-18	Universidad Veritas, Heredia	Jey Koehler, Ana Alcaraz, Patty Pesavento	Roberto Olivares
<b>Guatemala</b>	Workshop on pathology and mechanisms of diseases / IV Seminar of C.L. Davis - S.W. Thompson Foundation	Aug 7-10	Universidad San Carlos de Guatemala, Guatemala City	Corrie Brown, Javier Asin, Francisco Carvalho	Deborah Rodriguez
<b>Nicaragua</b>	1st Nicaraguan meeting of the C.L. Davis - S.W. Thompson Foundation	Aug 20-21	Laboratorio de Morfología, Universidad de Ciencias Comerciales, Managua	Francisco Carvalho, Guillermo Rimoldi	Jose Lara, Cristina Toledo
<b>Perú</b>	Latin American ROADSHOW of the C.L. Davis - S.W. Thompson Foundation (Brazil, Chile, Mexico, Peru)	Oct 23-Nov 3	TBD	Marti Pumarola	Francisco Carvalho, Francisco Uzal
<b>Uruguay</b>	9th Uruguayan seminar of the C.L. Davis - S.W. Thompson Foundation	TBD	Facultad de Veterinaria, Universidad de la República, Montevideo	Susan Stover, Laura Peña	José Manuel Verdes, Federico Giannitti, Carolina Matto, Fernando Dutra
	Necropsy and gross pathology workshop of the C.L. Davis - S.W. Thompson Foundation and 50th Uruguayan Buiatrics Meeting	Jun 10	Estación Experimental Dr. Mario A. Cassinoni, Facultad de Agronomía, Paysandú	Carolina Matto, Franklin Riet Correa, Fernando Dutra, Rodolfo Rivero, Jose Manuel Verdes, Lourdes Adrien, Francisco Uzal	Adrien Lourdes



# LCPG CORNER



## RONDAS DE HISTOPATOLOGÍA DEL LCPG 2023 10:30 - 11:30 CT



Davis-Thompson  
Foundation

**Febrero**



**Enfermedades del aparato gastrointestinal**  
**Francisco Uzal, DVM, MSC, PhD, DACVP**  
**in Spanish!**

**Marzo**



**Casos misceláneos**  
**Francisco Carvalho, MV, DSc, DACVP**  
**in Spanish!**

**Abril**

**20**



**Patología oral de perros y gatos**  
**Federico Cifuentes, MV, PhD, DACVP**  
**in Spanish!**

**Mayo**

**18**



**Enfermedades virales**  
**Javier Asin, DVM, PhD, DECVP**  
**in Spanish!**

**Junho**

**15**



**Patologia ocular**  
**Rachel Neto DVM, MS, DACVP**  
**in Portuguese!**

**Julho**

**20**



**Casos variados**  
**Rafaela De Negri, DVM, MSc**  
**in Portuguese!**

[Click here to register  
for individual seminars](#)



# LCPG CORNER



Davis-Thompson  
Foundation



## CURSO DE NECROPSIAS EN ANIMALES DOMESTICOS

20 Y 21 DE AGOSTO, 2023

IN-PERSON

Universidad de Ciencias  
comerciales- Nicaragua



**Guillermo  
Rimoldi**  
MV, DACVP



**Francisco R.  
Carvalho**  
MV, DCs, DACVP



# LCPG CORNER

A graphic for the Latin Comparative Pathology Group (LCPG). It features a central map of Latin America with a purple and blue color scheme. Surrounding the map are five circular images: a cow's head with a red tumor, a microscopic view of purple-stained cells, a white cat's face, a cross-section of a red and white tumor, and a group of people in a seminar. The text 'Become a member of the Latin Comparative Pathology Group' is at the top right. The LCPG logo is at the top left. A list of activities is at the bottom left.

**Become a member of the Latin Comparative Pathology Group**

**LCPG:**

- Provides Diagnostic Exercises
- Offers travel awards
- Coordinates externships in US labs for Latin Americans
- Organizes and lectures in Latin American seminars and courses

Click here for more  
information about  
how to become a  
member

## MISCELLANEOUS ANNOUNCEMENTS



Please contact one or more of the following if you are interested in volunteering:

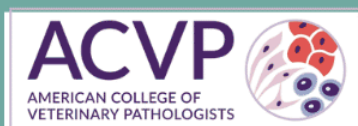
- Dr. Koehler: [jaw0007@auburn.edu](mailto:jaw0007@auburn.edu)
- Dr. Uzal: [fauzal@ucdavis.edu](mailto:fauzal@ucdavis.edu)
- Dr. Williams: [bruce.h.williams.dvm@gmail.com](mailto:bruce.h.williams.dvm@gmail.com)



# MISCELLANEOUS ANNOUNCEMENTS



Davis-Thompson  
Foundation



AMERICAN COLLEGE OF  
VETERINARY PATHOLOGISTS

RECORDING BASED ON  
ACVP PRE-MEETING  
WORKSHOP PRESENTED  
November 12, 2022

## ACVP Pre-Meeting Workshop Getting Into the Hard Stuff: Tumors of Bone, Cartilage, and Dental Tissue



**Keren Dittmer, BVSc, PhD, DACVP**

**Rob Foster, BVSc, PhD, DACVP**



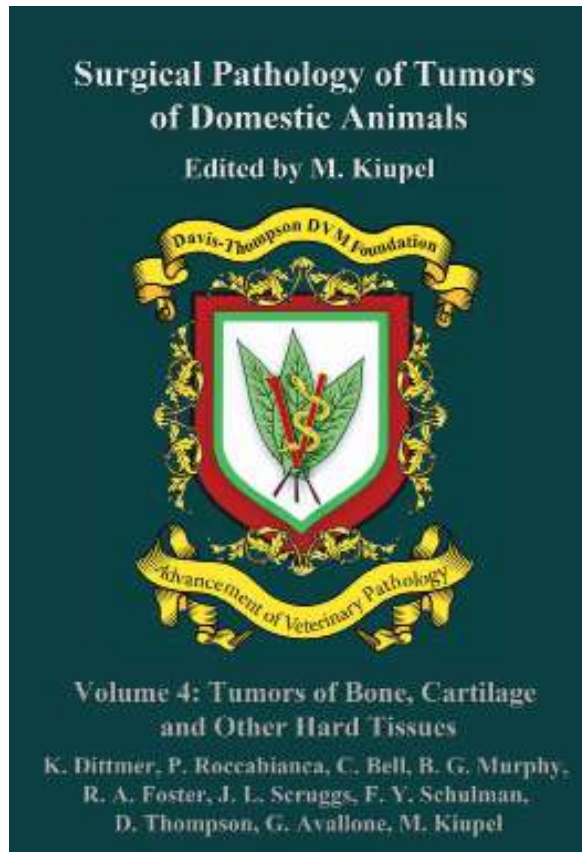
**Cindy Bell, DVM, DACVP**

Material from volume 4 of  
Surgical Pathology of  
Tumors of Domestic Animals!

The recording of the 2022 DTF/ACVP pre-meeting workshop is now available on the DTF bookstore website for purchase. This rebroadcast is approved for 4 ACVP MOC credits, 6.5 RACE credits

[Click here to purchase  
the rebroadcast](#)

# MISCELLANEOUS ANNOUNCEMENTS



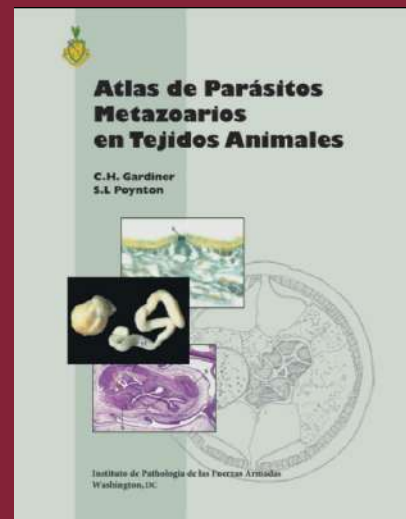
[CLICK HERE](#) to order your copy today!

## RETIRING?

Have slides left over from your recent slide seminar? Just looking to free up some storage space? The Foundation is looking for additional glass slides, kodachromes and other similar materials for its Correspondence Division and Study Centers. All materials should be well identified with as much accompany history and discussion as possible, as these materials are expressly used for teaching. Moreover, as the Foundation is a publicly donative charity, all donated materials are tax-deductible. For more information, please contact Dr. Bruce Williams at [bruce.h.williams.dvm@gmail.com](mailto:bruce.h.williams.dvm@gmail.com).

## Davis-Thompson Foundation Pathology Externship

Since 1980, the Davis-Thompson Foundation lab sites have hosted more than 125 veterinary students at 8 participating diagnostic laboratories. These students usually have a strong interest in pathology itself or zoo or poultry medicine that require a strong pathology background. The Foundation is always interested in having veterinary students apply for an externship and we would like to add more externship sites that do not usually have veterinary students, to help increase their interest and knowledge of pathology with some off-campus experience. For more information, contact Dr. Jim Britt, [jobritt@sbcglobal.net](mailto:jobritt@sbcglobal.net); 501-912-1449.



Atlas De Parasitos Metazoarios En Tejidos Animales - [Click Here](#) to Get a Digital Download!



**Davis-Thompson  
Foundation**

**DAVIS-THOMPSON FOUNDATION**

Phone: 847-367-4359

Fax: 847-247-1869

[davis-thompsonfoundation.org](http://davis-thompsonfoundation.org)

[cldavisdvm@comcast.net](mailto:cldavisdvm@comcast.net)

**APRIL 2023**