



Diagnostic Exercise

From The Davis-Thompson Foundation*

Case #280; Month April; Year: 2026

Question sheet

Contributors: Michelle Rubio Sanchez¹, Lauren W. Stranahan¹.

¹Texas A&M University College of Veterinary Medicine & Biomedical Sciences.

Corresponding author: lstranahan@cvm.tamu.edu

History: A 5-year-old, spayed female, German Shorthaired Pointer dog presented to a veterinary clinic for a second opinion following a history of chronic dermatitis and suspected allergies. Clinical signs improved with prednisone, but there was no appreciable response with antibiotics or oclacitinib (Apoquel). Lesions initially developed on the chest and occasionally involved paw pads and lips.

Clinical findings:

Upon presentation, crusts were noted at the oral mucocutaneous junctions, and marked crusting with follicular casts were noted on the trunk, most prominently on the ventrum. The ventrum exhibited coalescing areas of hyperpigmentation. Lesions progressed to generalized scale and crusts over the entire body (Figure 1). Complete blood count and serum chemistry results were within normal limits. The dog began to demonstrate a hunched stance while standing and a mild shifting leg lameness. Skin biopsies were submitted to a dermatopathology specialty service.

Gross and histological images:

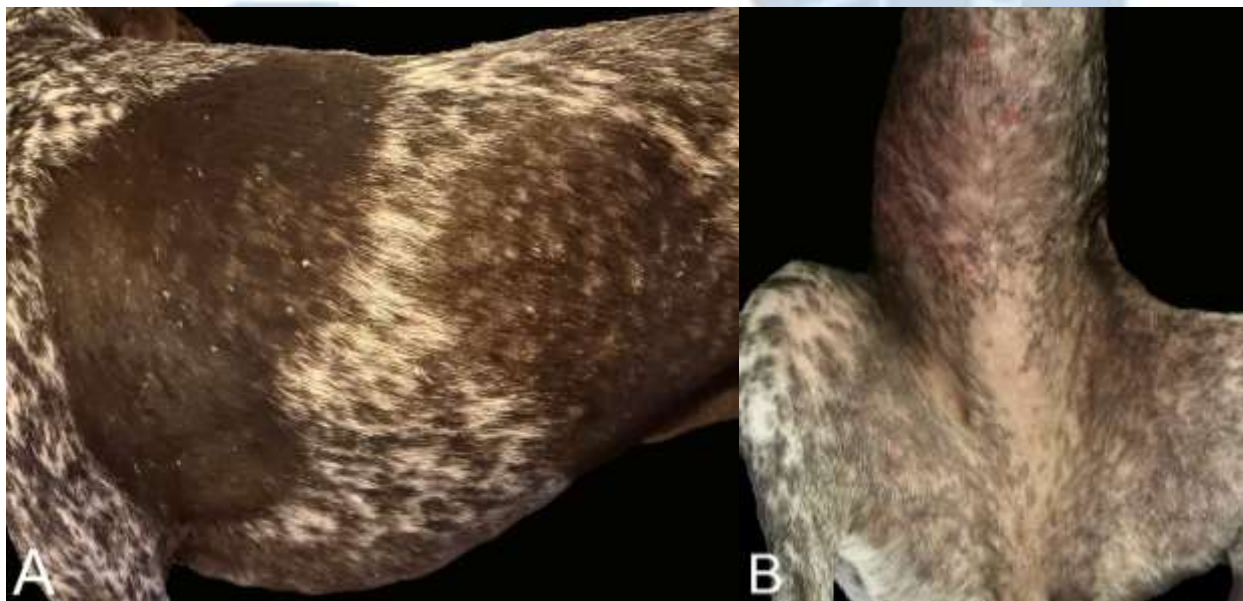


Figure 1.

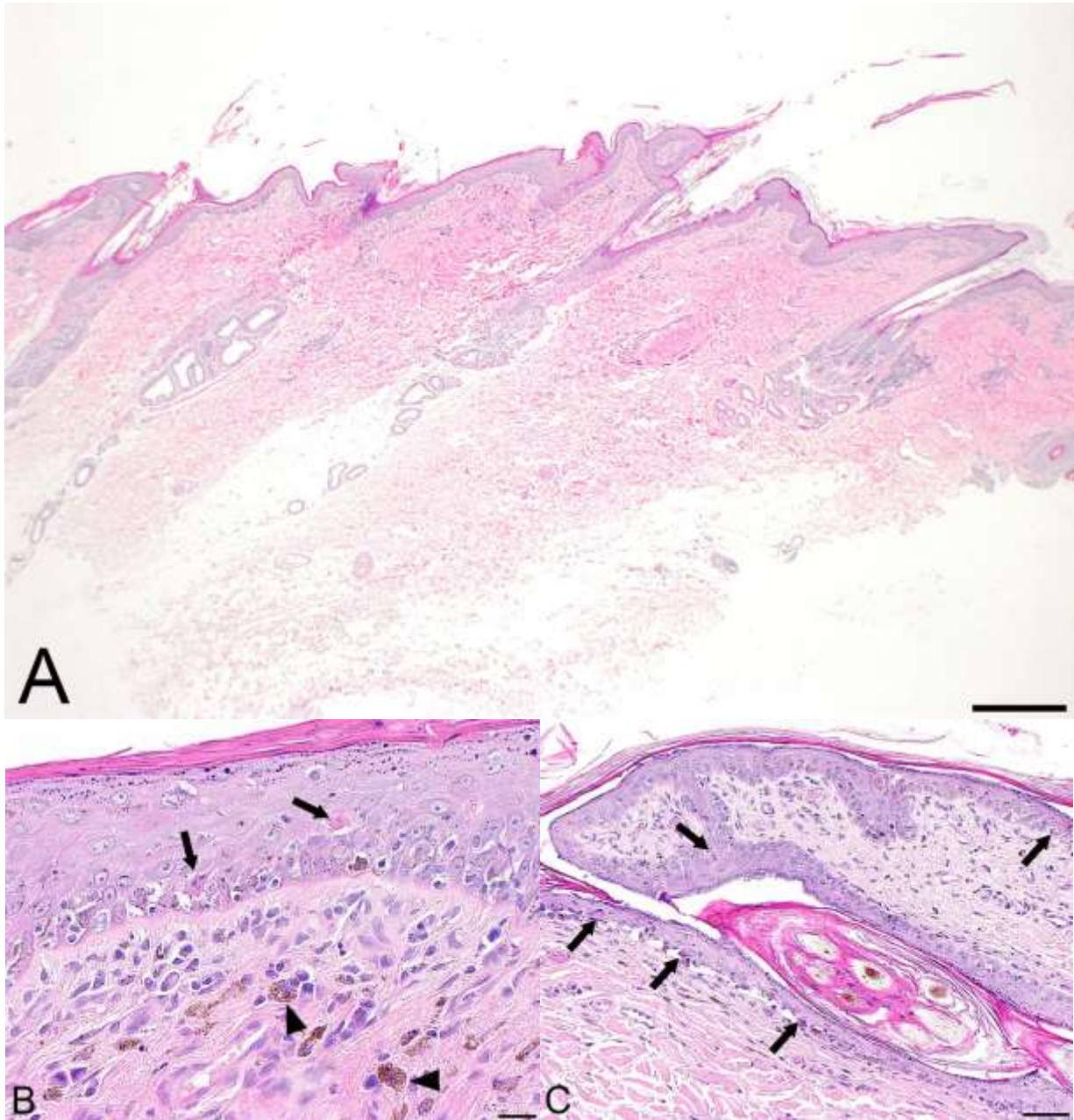


Figure 2.

Follow-up questions:

- *Morphologic diagnosis:*
- *Name the disease:*
- *Etiology:*
- *Other affected organs:*

*The Diagnostic Exercises are an initiative of the Latin Comparative Pathology Group (LCPG), the Latin American subdivision of The Davis-Thompson Foundation (DTF). These exercises are contributed by members and non-members from any country of residence. Consider submitting an exercise! A final document containing this material with answers and a brief discussion will be posted on the DTF website.

(<https://davisthompsonfoundation.org/diagnostic-exercise/>)

Associate Editor for this Diagnostic Exercise: Raquel Rech

Editor-in-chief: Claudio Barros