

# Diagnostic Exercise

## From The Davis-Thompson Foundation\*

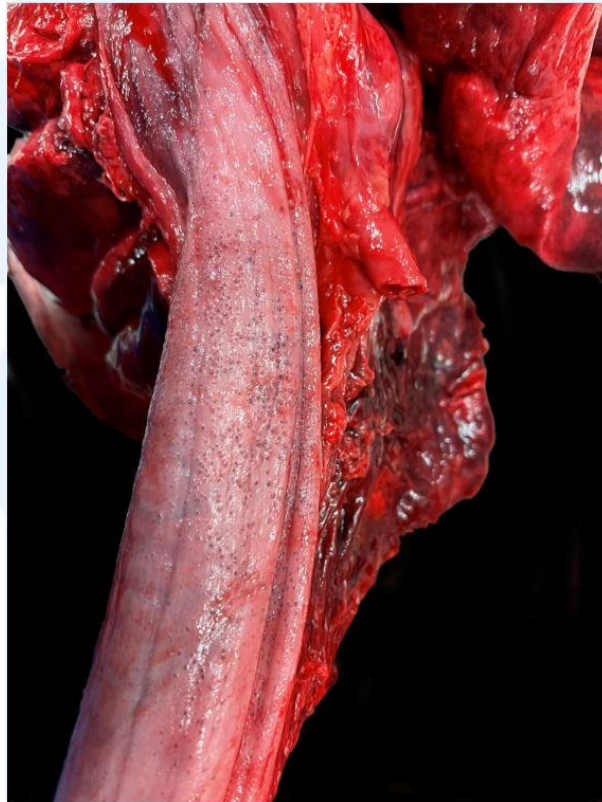
Case #: **209**; Month: **March**; Year: **2023**  
*Question sheet*

**Contributors:** Imogen Geh, DVM, Pathology Resident, Viviana Gonzalez-Astudillo, BVSc (hons), MNR, PhD, DACVP, [v.gonzalez@uq.edu.au](mailto:v.gonzalez@uq.edu.au)  
 School of Veterinary Science, The University of Queensland, Gatton QLD 4343 Australia.

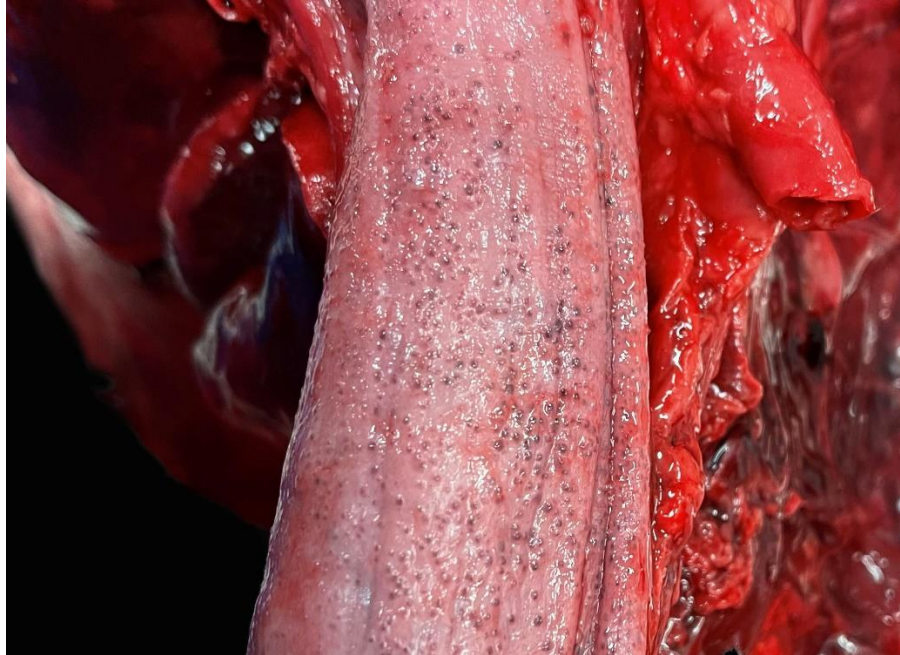
**Clinical history:** An 11-year-old female spayed Greyhound X Bull Arab was euthanised after diagnosis of osteosarcoma to the right shoulder.

**Gross Findings:** Diffusely, there are 100s of a miliary pinprick, 1-mm diameter, well-demarcated, ovoid, minimally raised, firm, dark purple to black nodules elevating the mucosal surface of the oesophagus. These nodules increase in number progressively towards the aborad oesophagus.

### Macroscopic photographs:

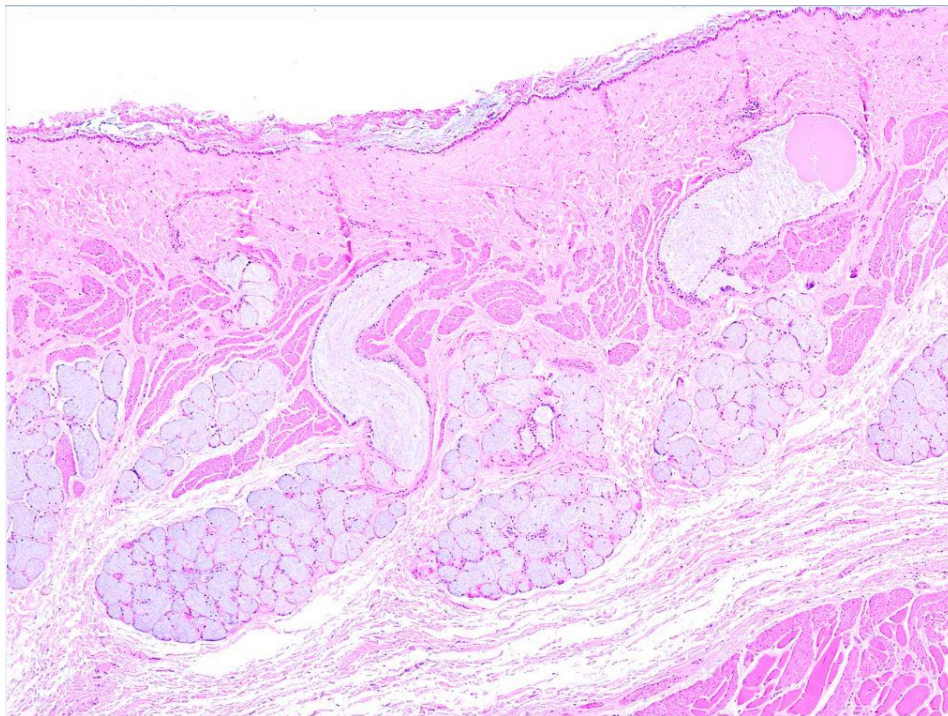


**Figure 1.**

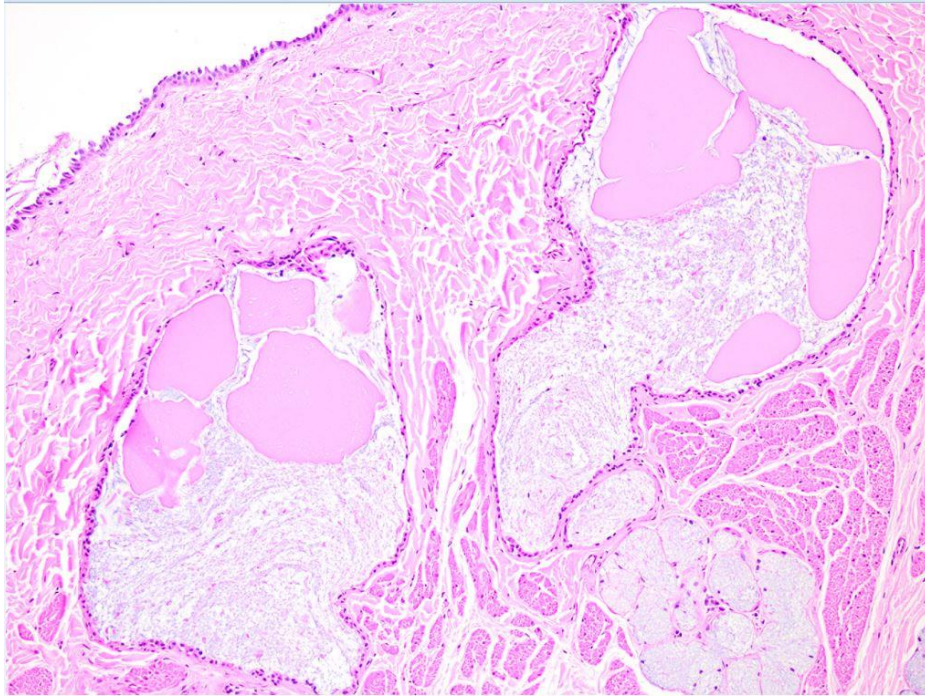


**Figure 2. Higher magnification.**

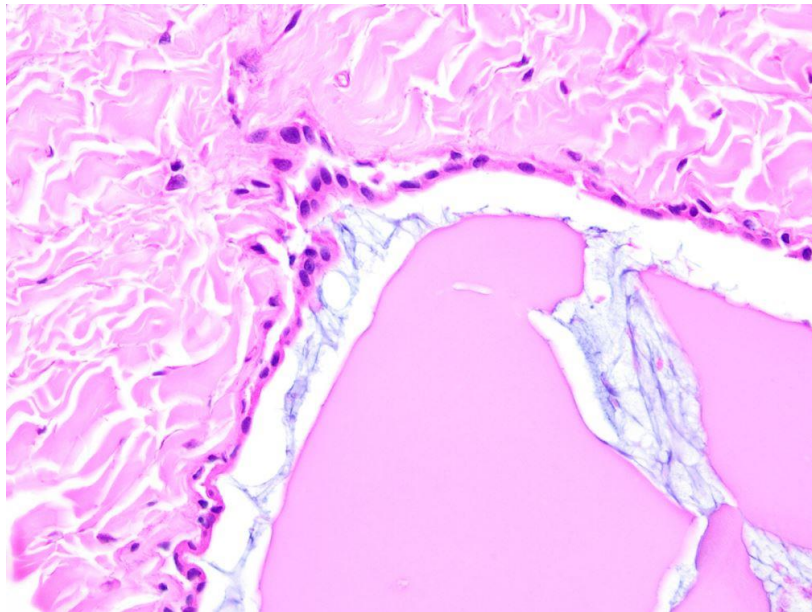
**Microscopic photographs:**



**Figure 2: H&E, 4X**



**Figure 3: H&E, 10X**



**Figure 4: H&E, 40X**

**Follow up questions:**

- *Histologic description*
- *Morphologic diagnosis*

\*The Diagnostic Exercises are an initiative of the Latin Comparative Pathology Group (LCPG), the Latin American subdivision of The Davis-Thompson Foundation.

These exercises are contributed by members and non-members from any country of residence. - Consider submitting an exercise! - A final document containing this material with answers and a brief discussion will be posted on the CL Davis website ([http://www.cldavis.org/diagnostic\\_exercises.html](http://www.cldavis.org/diagnostic_exercises.html)).

**Associate Editor for this Diagnostic Exercise:** Saulo Pavarini  
**Editor-in-chief:** Claudio Barros