



**Davis-Thompson  
Foundation**

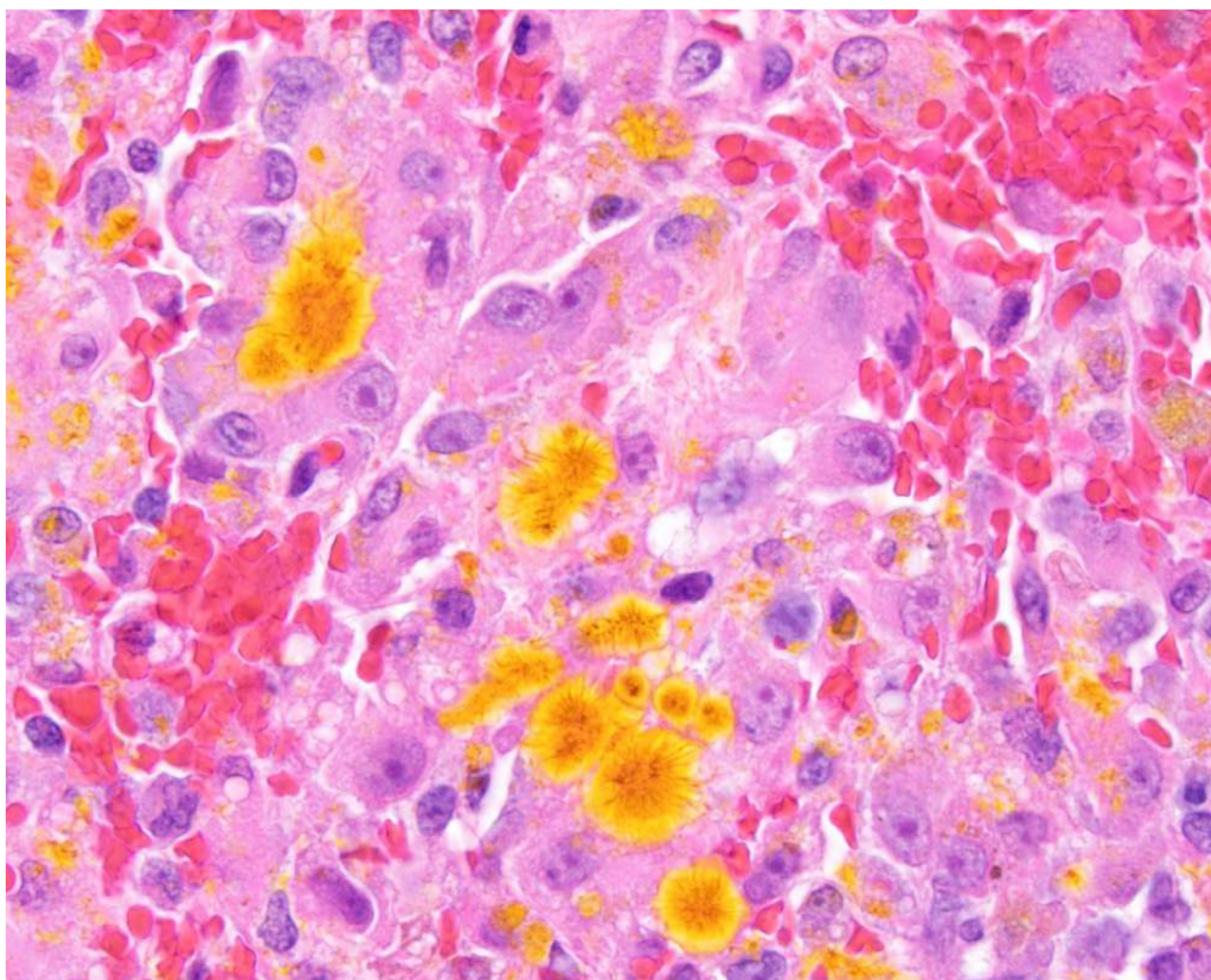
**C.L. DAVIS/S.W. THOMPSON  
DVM FOUNDATION**

A tax-exempt, donative,  
publicly-supported charity  
For the advancement of veterinary  
and comparative pathology

# THE DAVIS-THOMPSON FOUNDATION NEWSLETTER

July

**VOL. 55**



The presence of hematoidin crystals in a canine histiocytoma is most likely due to:

- A. Made by cancerous histiocytes
- B. Proof of metastasis
- C. From chronic bleeding and necrosis
- D. From iron buildup

# INSIDE THIS ISSUE

## MONTHLY COVER IMAGE WINNER:

### Wes Baumgartner DVM, PhD, Dipl. ACVP

Clinical Professor, Anatomic Pathology  
CVM-Veterinary Diagnostic Laboratory  
University of Illinois at Urbana-Champaign

Answer: C

Signalment: A 3 year old castrated Labrador Retriever mix

Hematoidin crystals suggest chronic bleeding and tissue hypoxia, common in ulcerated or traumatized histiocytomas.

Submit your image today ([images@davisthompsonfoundation.org](mailto:images@davisthompsonfoundation.org))!

-Dr. Katherine D. Watson - Cover Image Editor

-Dr. M. Donald McGavin - Cover Image Composition Analyst

- |   |  |
|---|--|
| <b>3</b> Message from the CEO             | <b>32</b> Foundations of Pathology       |
| <b>4</b> JVDI in Focus                    | <b>33</b> Racehorse Necropsy Workshop    |
| <b>6</b> Diagnostic Exercise              | <b>34</b> Southcentral Division Meeting  |
| <b>8</b> GHPN Workshop in Algeria         | <b>35</b> Eastern Europe Roadshow        |
| <b>16</b> Eastern European Meeting Review | <b>36</b> ACVP Pre-Meeting Workshop      |
| <b>20</b> AVDC Review                     | <b>37</b> AAVLD Pre-Meeting Workshop     |
| <b>21</b> CLIIC UK                        | <b>38</b> Diseases of Laboratory Animals |
| <b>22</b> Seminar Series in Spanish       | <b>39</b> Western Round Robin Case       |
| <b>23</b> Just in Time Mock Exams         | <b>41</b> Western Round Robin Call       |
| <b>24</b> Guatemalan Seminar              | <b>42</b> ASVP CORNER                    |
| <b>25</b> Nicaragua GHPN Workshop         | <b>43</b> IDEXX CaseConnexx Corner       |
| <b>26</b> WDA Pathology workshop          | <b>43</b> BSTP Corner                    |
| <b>27</b> AAZV Zoo & Wildlife Workshop    | <b>46</b> LCPG Corner                    |
| <b>28</b> AAZV Call for Cases             | <b>60</b> GHPN Scholarships              |
| <b>30</b> European Division Symposium     | <b>62</b> Miscellaneous Announcements    |
| <b>31</b> ENAPAVE                         |  |

## CEO & CHAIRMAN OF THE BOARD

FRANCISCO A. UZAL

## PRESIDENT

JEY KOEHLER

## TREASURER

BRUCE H. WILLIAMS

ASIN, JAVIER

AUTRAN, RACHEL

BRAYTON, CORY

BRICE, ANGELA

BRITT, JAMES

CARREIRA, VINICIUS

CARVALLO, FRANCISCO

CHAPMAN, JENNIFER

CORBIN, EMILY

CRAIG, LINDEN

DARK, MICHAEL

DE NEGRI, RAFAELA

DEL PIERO, FABIO

DOLENSEK, TAMARA

FIDDES, KELSEY

GENDRON-FITZPATRICK, ANNETTE

JEONG, KYU-SHIK

LANGOHR, INGEBORG

LOMBARDINI, ERIC

LYLE, TIFFANY

MCINNES, ELIZABETH

MCNAMARA, TRACEY S.

MÍRA, MÁNDOKI

OJOK, LONZY

PESAVENTO, PATTY

PRIESTNALL, SIMON

RAC, VLADISLAVA S.

ROSS, TONY

SLAOUI, MOHAMED

STROMBERG, PAUL

ZADOK, RUBEN

## MESSAGE FROM THE CEO

Dear colleagues,

I am proud to present to you the July issue of the Davis-Thompson Foundation, prepared, as always, by our outstanding Managing Editors, Jeann Leal and Javier Asin. Thank you, Jeann and Javier.

If you are attending the annual meeting of ACVP in New Orleans this fall, please take advantage of the myriad opportunities offered by the Foundation and the College. On the Foundation side, these include the pre-meeting seminar on Pathology of the Nervous System, the in-person component of the Foundations of Pathology Course, the Latin Comparative Pathology Group session, the Foundation's Award Ceremony and the Board of Directors meeting. This, on top of the long list of scientific activities offered by the College during this unique and vibrant 3-day meeting. The Foundation is proud of the great working relationship we have with the ACVP as we each fulfill our shared mission to educate trainees and enrich the veterinary pathology learning community. This relationship has benefited countless trainees and pathologists in the past, and we look forward to many more years of collaboration.

And speaking of training opportunities, please peruse these pages and the website of the Foundation to find a large number of training opportunities, many of which are happening very soon. Just to mention a few, consider the Just-in-time mock exams (July; on-line), Foundations of Pathology, the Pre-meeting workshops at the Annual Meetings of the ACVP (New Orleans), American Association of Veterinary Laboratory Diagnosticians (Aurora, Colorado) and European College of Veterinary Pathologists (August; Turin), various day seminars, our regular Histology rounds and many free on-line seminars in English, Spanish and Portuguese.

As always, none of these would be possible without the great job of our terrific volunteers. Thank you!!!!

Looking forward to seeing many of you in one of our training activities.

Francisco (Paco) Uzal  
Chief Executive Officer  
Davis-Thompson Foundation



## JVDI IN FOCUS



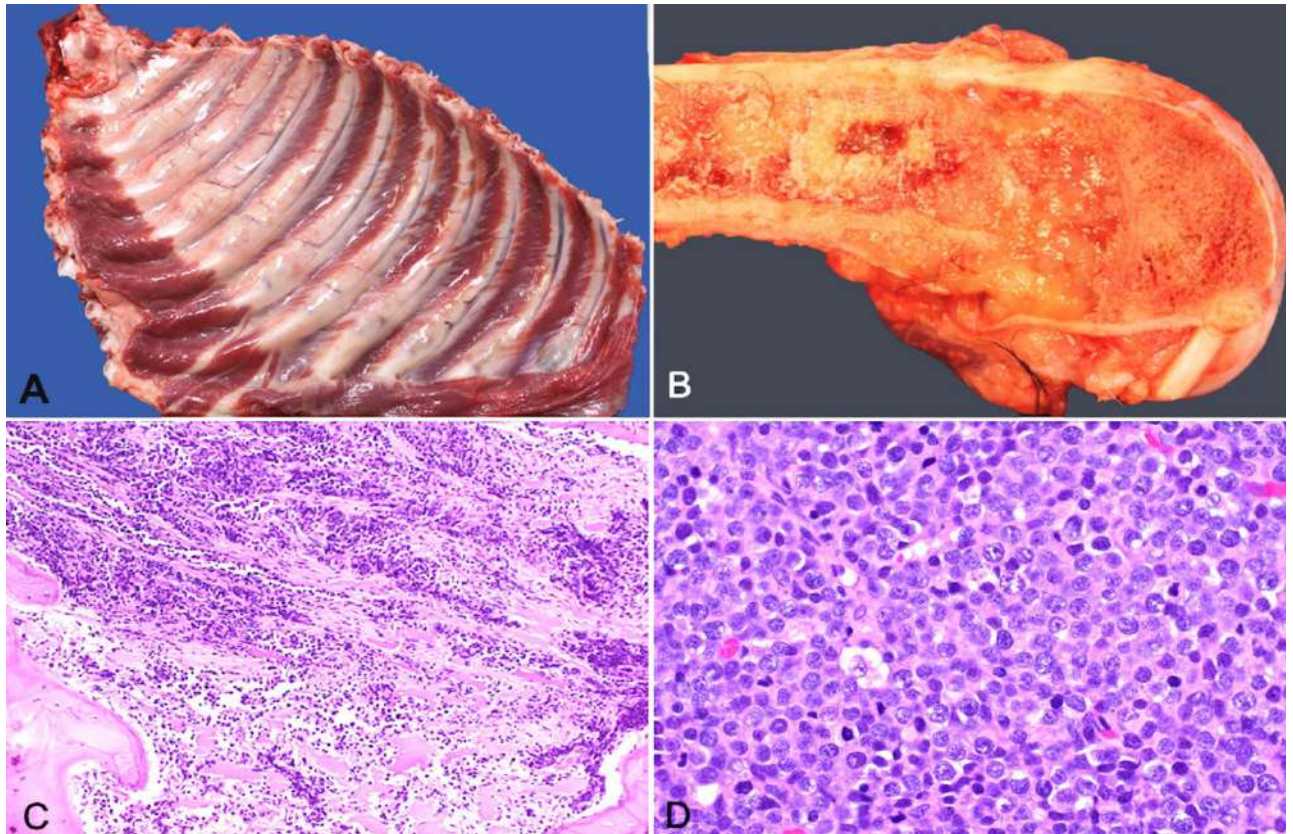
Our July focus is an article appearing in the July issue: **“Canine polyostotic B-cell lymphoma: a case with clinical, immunohistochemical, and flow cytometric characterization, and review of the literature”** by Matthew Kornya, Connor Bryant, Brandon Lillie, Sebastien Sanz, Kristiina Ruotsalo, Dorothee Bienzle.

J Vet Diagn Invest 2025;37(4); <https://journals.sagepub.com/doi/full/10.1177/10406387251329020>

An 8-mo-old Mastiff-cross dog with bone pain and lytic-proliferative lesions in the radius, ulna, femur, vertebral spinous processes, and ribs, was diagnosed with lymphoma. The dog also had anemia and thrombocytopenia, and atypical circulating lymphocytes were identified as B cells by flow cytometry. Due to the multicentric, rapidly progressive disease, the dog was euthanized. Postmortem examination confirmed extensive bone replacement by lymphoma, and infiltration of lymph nodes, spleen, and liver. Histomorphology and immunohistochemistry showed a diffuse large B-cell lymphoma that was immunopositive for PAX5 and CD20, and immunonegative for CD3. Lymphoma of bone is rare in dogs and humans, and is most frequently reported in pediatric individuals. Including our case, 7 of 14 reported cases occurred in dogs <2-y-old, and all but 1 had polyostotic disease. Long bones, ribs, and vertebrae were affected most often, and the distal metaphyseal region was targeted in long bones. Visceral and nodal tissue infiltration was common, and all tumors had a diffuse architecture. Most dogs with polyostotic lymphoma were euthanized at the time of diagnosis, and survival was <6 wk in dogs that were treated with chemotherapy or surgery.



# JVDI IN FOCUS



**Figure 3.** Polyostotic B-cell lymphoma in a dog. **A.** Gross appearance of bony proliferations at the costochondral junctions of ribs. **B.** Medullary infiltrates with lysis of cortical bone of the distal femur. **C.** Section from the proximal tibia with bone lysis and replacement by neoplastic lymphocytes. H&E. **D.** The popliteal lymph node is replaced by sheets of large lymphocytes with interspersed single small lymphocytes and macrophages, and occasional plasma cells. The large lymphocytes have round nuclei, peripheralized chromatin, and single or occasionally multiple nucleoli. H&E.



## DIAGNOSTIC EXERCISE



**Case #:** 260; **Month:** May; **Year:** 2025

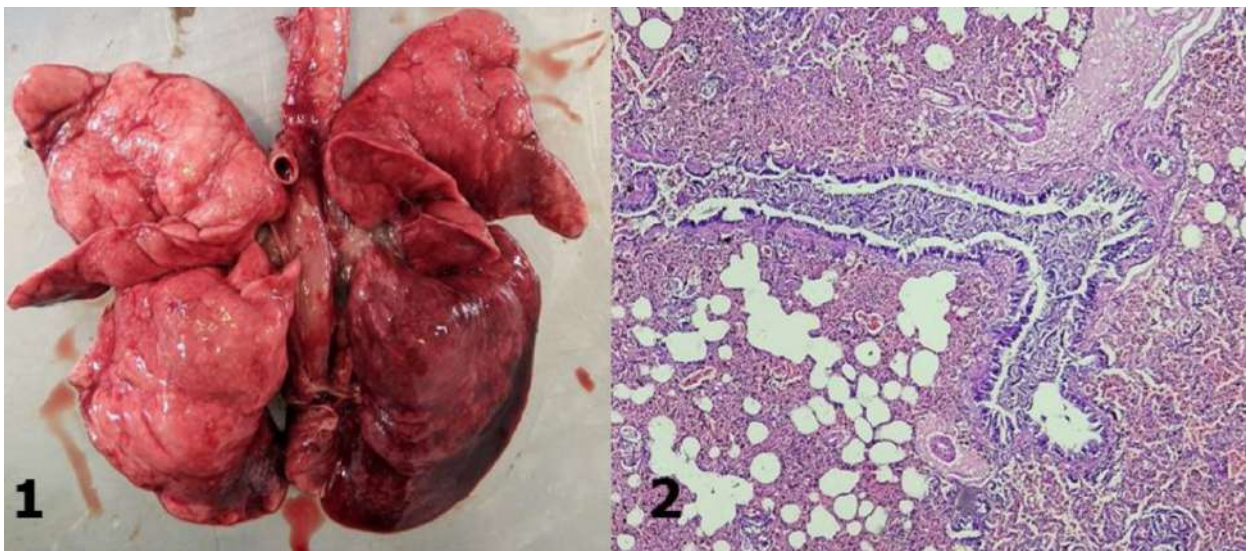
**Contributors:** Renata Brizzio, Cecilia Degiovanni\*, Ana Maria Martin.

Patologia Animal Cordoba, Cordoba, Argentina.

**\*Corresponding author:** [cecidegiovanni28@gmail.com](mailto:cecidegiovanni28@gmail.com)

**History:** A juvenile, gray fox arrived at the zoo with dehydration, depression and poor body condition. He died the day after arrival.

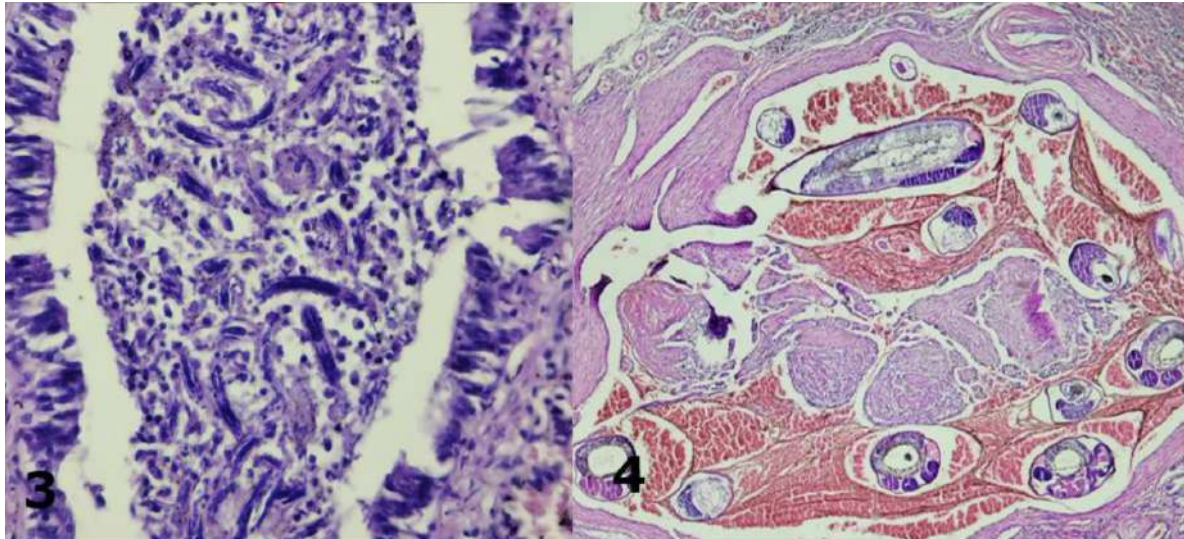
**Necropsy findings:** Grossly, both lungs (Fig. 1) were markedly edematous and had an increased consistency. They did not collapse when the thoracic cavity was open. Samples from both lungs (Figs 2, 3 and 4) were submitted for histopathology.







# DIAGNOSTIC EXERCISE



*Follow-up questions:*

- *Morphologic diagnosis*
- *Etiology*

[Click here for answers](#)

**Associate Editor for this Diagnostic Exercise:** Daniel Rissi  
**Editor-in-chief:** Claudio Barros

\*The Diagnostic Exercises are an initiative of the Latin Comparative Pathology Group (LCPG), the Latin American subdivision of The Davis-Thompson Foundation. These exercises are contributed by members and non-members from any country of residence. Consider submitting an exercise! A final document containing this material with answers and a brief discussion will be posted on the CL Davis website (<https://davisthompsonfoundation.org/diagnostic-exercise/>).

# GHPN WORKSHOP IN ALGERIA



## Basic Mechanisms of Disease and Diseases of Regional Interest

*Institute of Veterinary Medicine, Ibn Khaldoun University, Tiaret, Algeria*

*June 15-17, 2025*

*By Corrie Brown*



*Group photo*

Over three days, 35 veterinarians from university, government, and private sectors, gathered to discuss basic mechanisms of pathology, including disturbances of circulation and inflammation. They reviewed types of exudates and what each means, as well as practicing making morphologic diagnoses, using



# GHPN WORKSHOP IN ALGERIA

previously prepared images. Endemic diseases in Algeria were reviewed, including those of poultry, sheep and goats, and cattle. In addition, there was a review session on zoonotic diseases of livestock which are present in the country. All training was done using group work, interactive sessions, and participatory exercises. Overall, there was excellent participation, learning objectives were achieved, and evaluations were positive.

## DAY ONE



*From L to R: Drs. Aggad Habib, Corrie Brown, Hemida Houari, and Benallou*

## Opening Ceremony

Dr. Benallou, Director of the Veterinary Institute at the University, welcomed the participants. Dr. Corrie Brown expressed her pleasure at being in Algeria again and said she looked forward to getting to know all of the participants. Dr. Houari gave some background about experiences with Dr. Corrie and the Uni-

# GHPN WORKSHOP IN ALGERIA

versity of Georgia. He credited Davis-Thompson Foundation for supporting this workshop. Then Dr. Hakim Barghani, who is the Director of Veterinary Services for the state (wilaya) of Tiaret, reviewed the numerous disease incursions which have occurred over the last few years – highly pathogenic avian influenza, peste des petits ruminants, bluetongue, foot-and-mouth disease (with recurring new serotypes), and now lumpy skin disease. Algeria is the largest country in Africa and has thousands of kilometers of borders, often with adjoining nations that have poor disease control. Being able to recognize new diseases and report rapidly is very important.

## **Introductions**

Each person stood and stated their name, nature of their work, and one interesting “factoid” about themselves.

## **We reviewed the Learning Objectives:**

At the end of the workshop, participants will be able to:

1. Identify specific mechanisms of disease through gross lesions, and form a list of differential diagnoses
2. Create morphologic diagnoses for accurate communication
3. Describe the pathogenesis of common diseases of livestock in Algeria

Corrie described the system of surveillance, as described in the WOAHP Terrestrial Code. It is a tripartite system, involving field veterinarians, laboratory, and policy makers. All must work together to ensure there is effective surveillance to allow for control of serious animal diseases.

## **Diseases of the Public Good / Diseases of the Private Good:**

Each table was tasked with writing ten diseases on post-it notes for a particular

# GHPN WORKSHOP IN ALGERIA

commodity group (dairy cattle, beef cattle, sheep/goats, poultry, and horses). Then one person from each table came to the front and the group determined if that disease was “of the public good” or “of the private good”.

Control of the Public Good Diseases requires excellent surveillance, which in turn is dependent on abilities of the field veterinarian awareness and communication abilities. This was again emphasized by Dr. Barghani.

## Disturbances of Circulation

Each table had to diagram the circulation, from heart to lungs back to heart, to body. Then Corrie described the circulation at the tissue level. We discussed types of hemorrhage.

## Shock

Every animal dies of shock. There are three types of shock – septic/distributive; hypovolemic; and cardiogenic. Then participants worked through the scenarios regarding hemorrhage and shock, some of which are shown below:



## Inflammation

Every participant was given a copy of the Manual of Field Diagnosis for Specimen Collection to Improve Diagnosis of Animal Diseases (also known as “The Necropsy Manual”), in French, published by LifeStock. Participants were given time to review the Chapter on How Gross Lesions Can Inform Diagnosis, and How to Make a Morphologic Diagnosis. Then the groups did many exercises to



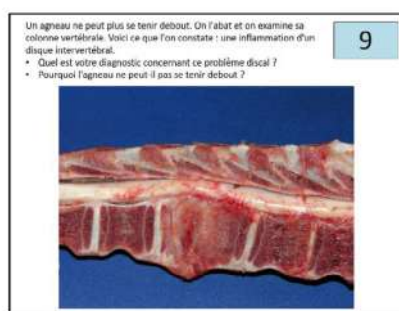
# GHPN WORKSHOP IN ALGERIA



*Group work*

make morphologic diagnoses and discuss their meanings.

For instance, here are some of the scenarios used for making morphologic diagnoses and discussing their meanings. that disease was “of the public good” or “of the private good”.



# GHPN WORKSHOP IN ALGERIA

At the end of the day, we did a game where participants had to name the inflammation of a particular organ. The organ was named and the first person to correctly shout out what inflammation of that organ was called, could sit down. The first table with all of the members sitting won the game.

## DAY 2

The day began with participants reviewing what was done yesterday and what they learned.

The rest of the morning was poultry diseases – using scenarios, each with multiple questions at the end. Diseases included: Marek's, HPAI, infectious bronchitis, and colibacillosis. These were scenarios used many times in GHPN courses, and they were translated to French using Google translated and then printed for this course. The Google translation proved very efficient.

After all the scenarios were examined, the groups took turns presenting to the whole class and leading the discussion. Corrie often stepped in with information about the pathogenesis, using flip charts to demonstrate, for instance below are the flip charts to clarify some aspects of colibacillosis and highly pathogenic avian influenza. These flipcharts always generated good discussions, with contributions from the participants. One poultry specialist said, "We live with colibacillosis, always, this helps me to understand more how to control it."

After lunch, there were selected diseases of ruminants, done using scenarios and group work again – FMD, PPR, Johnes disease, and Lumpy Skin Disease. Groups were selected to report out. There was considerable discussion about control methodologies, especially vaccines, so Corrie led a discussion about various vaccine formulations, why some work better than others – basically the pro's and con's of various types of vaccines – MLV, killed vaccine, recombinant,

# GHPN WORKSHOP IN ALGERIA

## DAY 3

### **Zoonotic Diseases of Livestock**

Participants again worked in groups, at tables, discussed three previously-prepared scenarios – rabies, *Mycobacterium bovis*, and anthrax. Discussions about these three diseases were lively and informative. Algeria does not require veterinarians to be vaccinated against rabies, and so they receive vaccine only if they are bitten by a potentially rabid animal. Also, dogs with CNS signs which bite a human are not immediately euthanized, rather they are kept for two weeks. If the animal dies, the brain is checked for rabies. Post-exposure prophylaxis is readily available in Algeria but it is expensive. Several veterinarians in the group had dealt with anthrax cases in cattle.

### **Checking for antibodies or checking for the agent**

Participants worked through a group of previously prepared short scenarios about acute vs chronic diseases, and how checking for antibodies will tell you “where the disease has been” or “if the animal has been vaccinated” but probably will not inform you about an acute disease (such as FMD) or the cause of an abortion (in which the dam may be chronically infected). Requesting and interpreting tests both require understanding of the disease.

### **Final Exercise**

The last exercise was designed to help determine attainment of learning objectives. Each table chose an index card on which was written one of the following statements. They then had 3 minutes for table discussion followed by a presentation which could last no more than 2 minutes. This proved to be a very successful exercise. Here are the topics which were distributed:

- What makes FMD so hard to control and why is it so important?
- How do you classify diseases of public good vs private good?
- Explain the pathogenesis of rabies virus.



# GHPN WORKSHOP IN ALGERIA

- What is the pathogenesis of anthrax?
- Explain the triangle that is surveillance, what does each corner do?
- Explain Adult Learning to your colleagues.

## Closing Ceremony

Dr. Houari, Dr. Barghani, Dr. Benallou, and Corrie all made short closing remarks. Then certificates were awarded, and cake was served! Participants expressed hope that further workshops could be held.



# EASTERN EUROPEAN MEETING REVIEW

## 6th Annual Davis-Thompson Foundation Eastern European Veterinary Pathology Meeting

May 21-23, 2025

*By Tamara Dolenšek*

This year, the Eastern European Meeting was held in Cluj-Napoca, the second-most populous city in Romania. Once the capital of the historical principality of Transylvania, Cluj-Napoca represents a vibrant and fast-growing city. The mee-

ting took place at the University of Agricultural Sciences and Veterinary Medicine (UASVM) Cluj-Napoca in co-organization by the local faculty members and the European Division of the Davis-Thompson Foundation.



Dr Melanie Dobromylskyj, Finn Pathologists, UK, captured the participants' interest with her profound interest and extensive knowledge of feline pathology. Her introductory lecture on what makes cats so special caught everyone's attention and held their curiosity throughout the event.

Participants learned both the common pathologies seen in cats as well as the more odd and rare entities, such as giant cell reparative gra



# EASTERN EUROPEAN MEETING REVIEW



*Participants at the Turda Salt Mine*

nulomas of feline toes. To keep the schedule diverse, Professor Brian Murphy, UC Davis School of Veterinary Medicine, USA, kicked off with lectures on the diagnostic philosophy applied to cases in oral and maxillofacial pathology. Even though this is a specific field that isn't every pathologist's cup of tea, Dr Murphy gave the participants a very systematic and logical algorithm that should help them tackle such entities. Hopefully, this approach has encouraged more veterinary pathologists to delve into this subspecialty.

The formal part of the second day is traditionally shorter and includes a lecture from a representative of the Local Organizing Committee. Professor Flaviu



# EASTERN EUROPEAN MEETING REVIEW

Alexandru Tăbăran presented curious, not so well documented entities that he has observed on the necropsy floor, such as cases of splenosis adjacent to pancreatic tissue. After two more lectures from Dr Dobromylskyj and Professor Murphy, the entire delegation headed to Turda Salt Mine. This impressive salt mine boasts underground halls measuring up to 90 m (295 feet) in height and 87 m (285 feet) in diameter. After returning to UASVM Cluj-Napoca campus, interested participants were taken on a short walking tour into the city's center where they then enjoyed some well-deserved food and drinks.



The last day of the meeting included lectures on oral neoplasia, equine oral pathology, feline liver, pancreatic and cardiac disease as well as a joint lecture by Dr Dobromylskyj and Professor Murphy on feline oral disease. As was the case during the previous two days, participants had the opportunity to ask both

## EASTERN EUROPEAN MEETING REVIEW

invited speakers both during the lectures as well as during the breaks. Both speakers were amazing at replying to numerous questions and indulging in discussions.

The meeting came to an end with a formal dinner at a traditional Romanian restaurant in Cluj-Napoca. Following the enormous quantities of delicious local cuisine, there was hardly any space left for dessert, but we did our best. The Local Organizing Committee did a wonderful job by organizing the event at their lovely campus which provided a pleasant social atmosphere.

We are delighted by the continuous string of these Eastern European Meetings as they provide an invaluable opportunity for veterinary pathologists in the region. The veterinary pathology caravan won't be travelling too far next year, since the University of Veterinary Medicine in Budapest will be hosting the 7th annual meeting in neighboring Hungary. Make a mark in your calendar for May 2026 and stay tuned since another fabulous opportunity for continued education awaits in Eastern Europe!

Photo credits: Prof. Simon Priestnall, Kalla Hédi, Local Organizing Committee

# AVDC REVIEW

## The Davis-Thompson Foundation at the 6th Annual Veterinary Diagnostic Conference (AVDC), Nanjing, China

*June 14-16, 2025*

*By Francisco Uzal*

The 6th Annual Veterinary Diagnostic Conference was held in Nanjing, China, from June 14 to 16. This was a fantastic meeting with close to 1,000 attendees from all over the country and excellent scientific presentations. Our CEO, Francisco (Paco) Uzal, was invited to attend the conference and give a presentation on the International Veterinary Pathology Program of the Davis-Thompson Foundation. The session was very well attended by a large group of pathologists and trainees eager to learn about the training opportunities offered by the Foundation. The field of veterinary pathology is growing rapidly in China and training requirements are in high demand. Conversations are currently ongoing with the organizers of the meeting for a possible annual Davis-Thompson pre-meeting seminar in the future.



*2025 AVDC group photo*



*Dr. Uzal at his lecture*



# CLIC UK



The banner features a colorful, abstract background with splashes of paint in various colors. At the top, the text 'CLIC UK' is displayed in white on a dark teal background. Below this, the main title 'CLIC CURRENT LITERATURE AND IMAGE INTERPRETATION COURSE' is shown in large, bold, orange and purple letters. To the right of the title is the Davis-Thompson Foundation logo, which consists of a shield containing a caduceus and the text 'Davis-Thompson Foundation'. Below the title, a calendar icon is followed by the dates 'JUNE 30 - JULY 4, 2025'. Three headshots of the speakers are arranged horizontally: Linden Craig, Denae LoBato, and Kim Newkirk. Below each headshot is their name and credentials. To the left of the speakers, a list of course features is provided. To the right, the cost and location are listed. At the bottom, a colorful silhouette of the Cambridge skyline is shown, with the University of Cambridge logo and name overlaid. A small credit line at the bottom right reads 'Cambridge England Skyline #14 by M. J. Tomsett used by permission'.

**CLIC** CURRENT LITERATURE AND IMAGE INTERPRETATION COURSE

 **JUNE 30 - JULY 4, 2025**

  
**Linden Craig**  
DVM, PhD, DACVP

  
**Denae LoBato**  
DVM, PhD, DACVP

  
**Kim Newkirk**  
DVM, PhD, DACVP

- 650+ board-style multiple choice questions
- Thousands of images (gross & microscopic)
- 30+ hours engaging poll-mode lectures

400 USD \$  
In-person   
Cambridge, UK 

 **UNIVERSITY OF CAMBRIDGE**  
Department of Veterinary Medicine

Cambridge England Skyline #14 by M. J. Tomsett used by permission

[Click here to register](#)

# SEMINAR SERIES IN SPANISH



Davis-Thompson  
Foundation



**Seminar Series  
in Spanish 2025**

**Jueves, 3 de Julio, 2025**

**11:00am-12:30pm CDT**

## Patología ósea




**Fernando Dutra**  
**DVM, MSc**

[Click here to register](#)



# JUST IN TIME MOCK EXAMS



Davis-Thompson  
Foundation

July 14-15, 2025

## JUST IN TIME MOCK EXAMS

**Francisco Uzal**  
DVM, MSc, PhD, DACVP

**Kevin Woolard**  
DVM, PhD, DACVP

**Ingeborg Langohr**  
DVM, PhD, DACVP

**Javier Asin**  
DVM, PhD, DECV

**Susan Bender**  
VMD, PhD, MS, DACVP


**Eileen Henderson**  
DVM, MS, CertAqV, DACVP

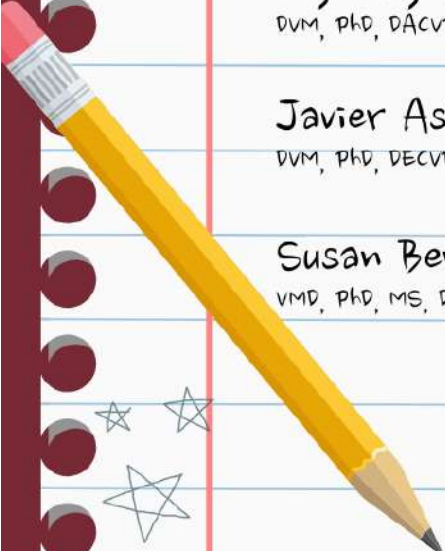
**Denise Imai**  
DVM, PhD, DACVP

**Anne Lewis**  
DVM, PhD, DACVP

**Dalen Agnew**  
DVM, PhD, DACVP

Registration fee: \$ 250

 Virtual



[Click here to register](#)



# GUATEMALAN SEMINAR



Davis-Thompson  
Foundation



## IV SEMINARIO GUATEMALTECO DE PATOLOGÍA VETERINARIA DE LA FUNDACIÓN DAVIS-THOMPSON

### Patología Macroscópica de Rumiantes

17 julio 2025



**Javier Asín**

DVM, PhD, DECVP



**Melissa Macías-Rioseco**

DVM, MPVM, PhD, DACVP



En persona



Universidad de San Carlos Guatemala, Guatemala

[Click here for more  
information](#)

# NICARAGUA GHPN WORKSHOP & SEMINAR

 Davis-Thompson Foundation

 PCPG

 GLOBAL HEALTH PATHOLOGY NETWORK

 UCC

## Taller GHPN de Mecanismos Básicos de Enfermedad y Necropsias & Seminario Nicaragüense de la Fundación Davis-Thompson

**21-24 JULIO 2025**



**JAVIER ASÍN**  
DVM, PhD, DECV



**MELISSA MACÍAS-RIOSECO**  
DVM, MPVM, PhD, DACVP



**CRISTINA TOLEDO**  
MVZ



**FRANCISCO CARVALLO**  
DVM, DSc, DACVP

 Universidad de Ciencias Comerciales, Managua, Nicaragua

[Click here for more information](#)

# WDA PATHOLOGY WORKSHOP



Davis-Thompson  
Foundation

July 26, 2025

## WDA Wildlife Pathology Workshop



Submit cases by  
June 9, 2025

**Keynote presentation:**  
**Applications of next-generation  
sequencing for wildlife disease diagnoses**

\$ 100-200  
in-person  
Victoria,  
British Columbia, Canada



**Karen Fox**  
DVM, PhD, DACVP



[Click here to register](#)



# AAZV ZOO & WILDLIFE WORKSHOP



The poster features a light green background with various animal illustrations: a zebra's head on the right, a tiger's face at the bottom right, a fish at the bottom left, and a giraffe in the top right logo. The Davis-Thompson Foundation logo is in the top left. The main text is centered, with the title in large, bold, brown letters. The keynote presenter's photo and name are on the left. The registration details are at the bottom in a grid format.

 Davis-Thompson Foundation

 **AAZV**  
AMERICAN ASSOCIATION OF ZOO  
VETERINARIANS

**AAZV 32nd Annual**  
**ZOO & WILDLIFE PATHOLOGY WORKSHOP 2025**  
**August 24, 2025**

**NEOPLASIA OF ZOO, AQUARIUM,  
AND WILDLIFE SPECIES**

**Keynote presentation:**  
**Collaborating to Conquer Cancer**

 **Dr. Tara Harrison**  
DVM, MPVM, DACZM, DACVPM, DECZM (ZHM), CVA

Got a tumor with an interesting story behind it? Calling for cases that shed light on how cancer impacts our zoo animals and wildlife.  
Submit your case by June 1

 In-person	 250 USD Students: 150 USD
 Kansas City, Mo	 8 hours of CE

[Click here to register](#)

# AAZV CALL FOR CASES

**American Association of Zoo Veterinarians, 32<sup>nd</sup> Annual, Zoo & Wildlife Pathology Workshop 2025**  
**Co-sponsored by the Davis-Thompson Foundation**

This all day, in person workshop will be held on [Sunday, 24 August 2025 from 8:00 AM to 5:00 PM Central time](#), in association with the annual meeting of the American Association of Zoo Veterinarians in Kansas City, Mo, USA.

This eight-hour workshop brings together zoo veterinarians and pathologists for a full day of discussion of interesting cases in zoo and wildlife pathology. This year's keynote lecture will be by the noted clinician and wildlife cancer expert, **Dr. Tara Harrison**, professor at North Carolina State University College of Veterinary Medicine. Her keynote presentation is titled "**Collaborating to Conquer Cancer.**" Following the keynote lecture, veterinarians from around the world will present cases throughout an interactive all-day session with an emphasis on neoplasia of zoo, aquarium, and wildlife species.

**Got a tumor with an interesting story behind it? Calling for cases that shed light on how cancer impacts our zoo animals and wildlife. As usual we will consider any zoo or wildlife case submissions, even if they do not fit the theme. If you wish to present a case, please email Dr. Rachel Burns ([reburns@sdzwa.org](mailto:reburns@sdzwa.org)) with a brief description (1-2 sentences) of the case by [1 June 2025](#). Those applicants with chosen cases will be notified by email by the following week.**

## **INSTRUCTIONS FOR CASES SELECTED**

1. **5 replicate H&E slides plus 2 unstained are required. If possible, please limit slides to one piece of tissue with the lesion to facilitate Aperio® scanning for digital production.** Send by [20 July 2025](#) to:

# AAZV CALL FOR CASES

## Shipping Address (FedEx/UPS):

Rachel Burns, DVM, Dipl. ACVP  
Disease Investigations, San Diego Zoo  
1354 Old Globe Way  
San Diego, CA, USA 92101

## Mailing Address (USPS):

Rachel Burns, DVM, Dipl. ACVP  
Disease Investigations, San Diego Zoo  
PO Box 120551  
San Diego, CA, USA 92112

**2. Please prepare your 2 to 3 page write up in Microsoft Word (NOT pdf files) using the following headings on institutional letter head and send via email to Rachel Burns ([reburns@sdzwa.org](mailto:reburns@sdzwa.org)) by 20 July 2025:**

**Page 1.** CONTRIBUTOR(S)/ INSTITUTION: SIGNALMENT: HISTORY: GROSS FINDINGS:

**Page 2 and 3.** HISTOPATHOLOGIC AND CLINICAL PATHOLOGY FINDINGS: MORPHOLOGIC/ETIOLOGIC DIAGNOSIS: DISCUSSION: REFERENCES: ACKNOWLEDGMENTS

The syllabus and scanned slides from the case write-ups should be available at least one week prior to the workshop and can be downloaded from the Davis-Thompson Foundation website at: <https://davisthompsonfoundation.org/available-slide-conferences/>

**\*If you need inspiration, also note that case material from 15 previous workshops are available for viewing at this site!**

[Workshop registration includes access to images and case information. All participants must register for this course.](#) Remember that you are welcome to attend the Workshop even if you have not submitted a case.



# EUROPEAN DIVISION SYMPOSIUM



Davis-Thompson  
Foundation

## European Division Symposium on Gastrointestinal Pathology

August 25-26, 2025



**Simon Priestnall**

BSc (Hons) BVSc PhD PGC(VetEd)  
FHEA FRSB DipACVP FRCPath MRCVS

**Francisco Uzal**  
DVM, MSc, PhD, DACVP



**Brandon Plattner**  
DVM, PhD, DACVP



425€ Early bird  
490€ Full rate



Hotel NH Torino Centro, 104 Corso Vittorio  
Emanuele II 10121 Torino, Italy  
In person



[Click here to register](#)

# ENAPAVE



# CPV

Congresso de Patologia Veterinária

## XXII ENAPAVE

Encontro Nacional de Patologia Veterinária

Cuiabá - Mato Grosso

### O MAIOR EVENTO DO ANO ESTÁ CHEGANDO!

**Data** 09 a 12 de setembro

**Local** Cuiabá, Mato Grosso, Brasil

**Saiba mais** [enapave.com.br](http://enapave.com.br)



[Click here to register](http://enapave.com.br)

# FOUNDATIONS OF PATHOLOGY

## FOUNDATIONS OF PATHOLOGY 2025



Davis-Thompson  
Foundation

September 12, 13, 14 (virtual)  
October 29 (in-person)



**JEY KOEHLER**  
DVM, PHD, DACVP



**LINDEN CRAIG**  
DVM, PHD, DACVP



**PATTY PESAVENTO**  
DVM, PHD, DACVP



**ANA ALCARAZ**  
DVM, PHD, DACVP



Members \$400,  
Non-Members \$500



22h pending  
approval



In-person, Oct 24  
Tulane Medical School  
New Orleans, LA

[Click here to register](#)



# RACEHORSE NECROPSY WORKSHOP



Davis-Thompson  
Foundation



HORSERACING  
INTEGRITY  
AND SAFETY  
AUTHORITY



Veterinary  
Diagnostic Lab

## RACEHORSE NECROPSY WORKSHOP

September 18-20, 2025



Dr. Francisco Uzal



Dr. Sue Stover



Dr. Stuart Brown



Dr. Laura Kennedy



Dr. Karen Hassan



Dr. Bruno Menarim



Dr. Julie Engiles



Dr. Mary Scollay



Dr. Jennifer Durenberger



Dr. Will Farmer



Dr. Sian Durward-Akhurst



Free



In-person



Lexington, KY

[Click here to register](#)

# SOUTHCENTRAL DIVISION MEETING



Davis-Thompson  
Foundation

## 35TH ANNUAL SOUTHCENTRAL DIVISION MEETING

### FROM CRIME SCENE TO COURTROOM: THE ROLE OF FORENSIC PATHOLOGY IN JUSTICE

**SEPT 26-27, 2025**



**Keynote speaker:**  
**Adam Stern**  
DVM, PhD, DACVP



**In-person:**  
\$200 vet professionals  
\$75 vet students

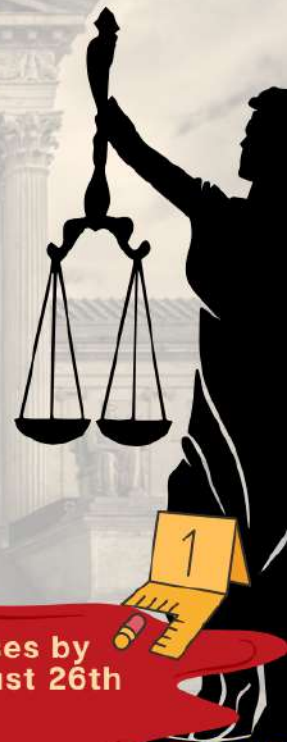


**Virtual:\$50**



**NEW LOCATION!**  
Hilton Garden Inn Granbury TX

**Submit cases by  
August 26th**



[Click here to register](#)



# EASTERN EUROPE ROADSHOW

**Davis-Thompson Foundation**

**2025 EASTERN EUROPEAN ROADSHOW**

**Francisco Uzal**  
DVM, MSc, PhD, DACVP

**ALIMENTARY DISEASES**

**October 7 - October 8**  
Budapest, Hungary  
[Click here to register](#)

**October 11 - October 12**  
Thessaloniki, Greece  
[Click here to register](#)

**October 15 - October 16**  
Krakow, Poland  
[Click here to register](#)

**In-person**  
€ 50

The poster features a central image of Francisco Uzal, a man in a blue bucket hat and orange shirt, holding a sign with his name and credentials. He is positioned over a map of Eastern Europe. To the left is a blue vintage car. To the right are three inset images of European cities: Budapest, Thessaloniki, and Krakow. The Davis-Thompson Foundation logo is in the top left corner.



# ACVP PRE-MEETING WORKSHOP

**Davis-Thompson Foundation**

**ACVP**  
AMERICAN COLLEGE OF  
VETERINARY PATHOLOGISTS

**OCTOBER 25, 2025**

**BRAIN INVADERS:  
TUMORS OF THE NERVOUS  
SYSTEM**

**Jey Koehler**  
DVM, PhD, DACVP

**Daniel Rissi**  
DVM, PhD, DACVP

**Andrew Miller**  
DVM, DACVP

**Elena Demeter**  
DVM, PhD, DACVP

**Brian Porter**  
DVM, DACVP

✓ 6.5hrs RACE,  
Pending

\$ \$75-375

👽 In person

NEW ORLEANS

[Click here to register](#)

# AAVLD PRE-MEETING WORKSHOP



**AAVLD PRE-MEETING WORKSHOP 2025**

## CYTOLOGY FOR ANATOMIC PATHOLOGISTS



**Melanie Ammersbach**  
DVM, DACVP (clinical)



**Alex Mau**  
DVM, DACVP (clinical)



**Patricia Pesavento**  
DVM, PhD, DACVP (anatomic)



Date: **October 31, 2025**



Time: **8:00am - 5:00pm**



pending Approval



Gaylord Rockies Resort & Convention Center, Aurora, Colorado

[Click here to register](#)



# DISEASES OF LABORATORY ANIMALS



Davis-Thompson  
Foundation

**Full day seminar**

Tuesday, Nov 18, 2025  
9:00 am - 4:00 pm (CST)

## Diseases of Laboratory Animals



**Kerriann Casey**

DVM, DACVP



**Pedro Ruivo**

DVM, MS, DACVP



**Javier Asin**

DVM, PhD, DECVP



**Stephen Barthold**

DVM, PhD, DACVP



Virtual



75 dollars



pending approval

[Click here to register](#)



# WESTERN ROUND ROBIN CASE

## CONTRIBUTING LABORATORY:

### North Dakota State University - Veterinary Diagnostic Laboratory

#### Signalment and history:

Received three small representative sections of a 48-pound caudal abdominal mass surgically removed from an 8-year-old, female intact, pot-bellied pig.

#### Histology:

Abdominal mass: Examined sections have no natural borders. Expanding the sections is a multinodular, non-encapsulated, variably cellular, poorly-demarcated, moderately-well differentiated neoplasm composed of pale eosinophilic spindle cells that are arranged in interlacing streams and bundles and separated by fibrous connective tissue and marked edema. Neoplastic cells have indistinct cell borders, large amounts of eosinophilic cytoplasm, and oval to elongated nuclei with finely stippled chromatin and 1-2 distinct nucleoli. Mild anisocytosis and anisokaryosis are present, along with no mitotic figures per 2.37 mm<sup>2</sup> tissue area. The neoplasm extends to multiple margins.

**Immunohistochemical staining:** Sections of the mass are stained with antibodies to smooth muscle actin. Neoplastic cells demonstrate strong cytoplasmic immunoreactivity. Controls are appropriate.

#### Diagnosis:

Abdominal mass: Leiomyoma

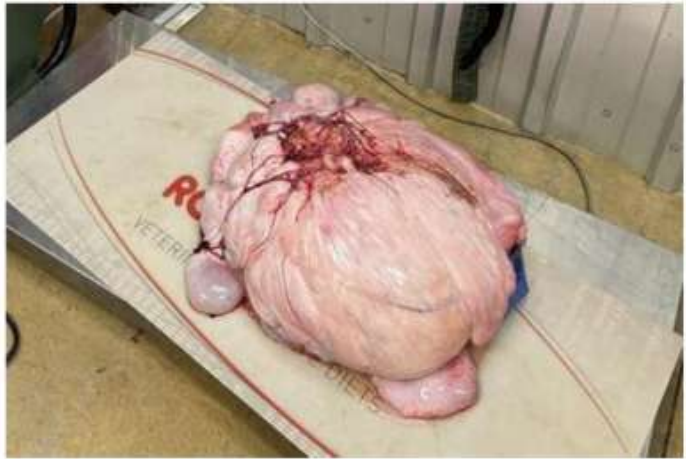
#### Comments:

Histologic features are consistent with a tumor of smooth muscle. Given the location in the caudal abdomen, uterine leiomyoma, which is common in older sows, is the main differential. [The rDVM agreed the mass was likely from the uterus after the report was sent.] Leiomyosarcoma cannot be completely ruled out due to the limited sections of tumor examined. However, leiomyoma is more common in aged pot-bellied pigs than leiomyosarcoma. In either case, both tumors tend to be locally invasive rather than metastatic. Hysterectomy should be curative, although active monitoring is recommended.

# WESTERN ROUND ROBIN CASE

**Contributor:**

Heidi Pecoraro, DVM, PhD, DACVP



[Click here to see  
this slide in Noah's  
slidebox](#)



**NOAH'S  
SLIDEBOX**

# WESTERN ROUND ROBIN CALL

Are you interested in participating in the next round of Western Round Robin?

Western Round Robin is a slide conference that has occurred annually for 30+ years.

In 2023, the conference transitioned to a digital format and the slides are uploaded to Noah's slidebox. Each participating laboratory sends a set of 4 cases with write-ups in November. Each month, a case is featured in the Davis-Thompson Foundation newsletter.

The slide seminar has a new coordinator: Dr Nicolas Streitenberger (UC Davis), and we are already organizing the next round of submissions. If your laboratory is interested in participating, please contact Dr Streitenberger ([streitenberger@ucdavis.edu](mailto:streitenberger@ucdavis.edu)) for details.



NOAH'S  
SLIDEBOX



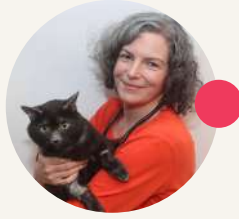
# ASVP CORNER

## 2025 ASVP & DTF SCIENTIFIC CONFERENCE THE HAEMATOLYMPHOID SYSTEM



**DOROTHEE  
BIENZLE**

Keynote Speaker  
Professor Emeritus  
Guelph University



**CLAIRE  
CANNON**

Invited Speaker  
Specialist Oncologist  
The University of Melbourne



**GARY  
LEE**

Invited Speaker  
Clinical & Anatomic Pathologist  
IDEXX Laboratories



**JOHN  
MACKIE**

Invited Speaker  
Specialist Pathologist  
QML Vetrnostics



**PHILLIP  
CARTER**

Invited Speaker  
District Vet  
Local Land Services North Coast

# REGISTER NOW

## 17-19 OCTOBER, 2025

RYDGES SOUTHBANK  
TOWNSVILLE, QLD

[www.asvp.asn.au/2025conference](http://www.asvp.asn.au/2025conference)

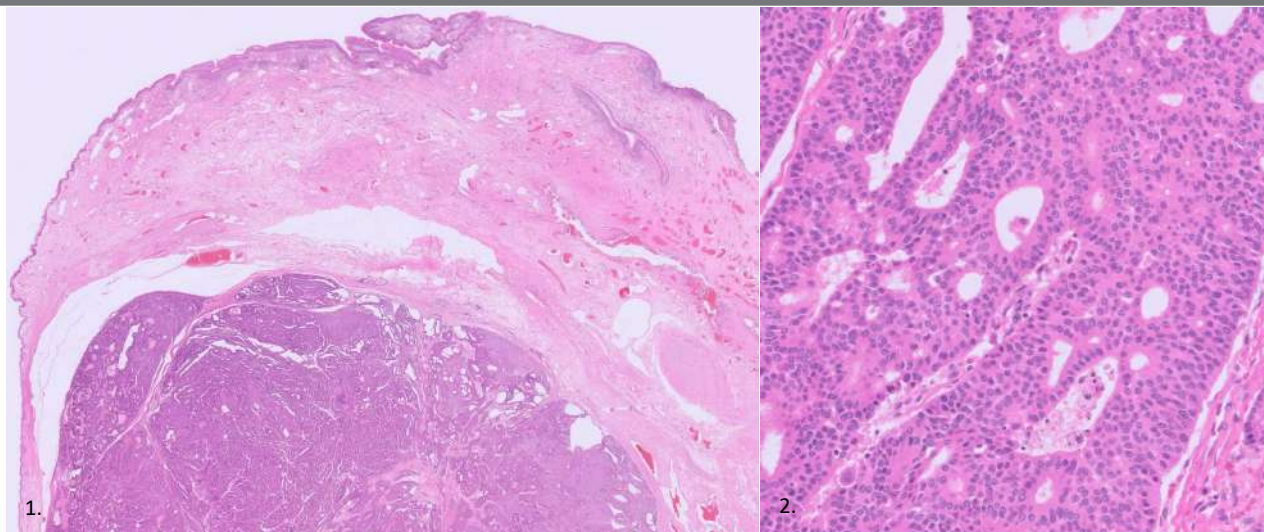


Davis-Thompson  
Foundation

# IDEXX CASECONNEX CORNER

**Signalment:** 10-year-old, female, spayed Brittany Spaniel dog

**Source/ History:** 5 cm x 4 cm x 3 cm multilobular mass arising from the clitoral fossa.



**Figure 1.** Well-circumscribed, densely cellular glandular epithelial neoplasm expanding in the deep collagenous connective tissues of the mucosa of the clitoral fossa. **Figure 2.** Neoplastic epithelial cells are arranged in variably thick cords, tubules and rosettes (histologically resembling apocrine gland adenocarcinoma of anal sac origin).

## Histopathologic Description:

Expanding within the subepithelial stroma of the clitoral fossa, there is a densely cellular, unencapsulated, mildly infiltrative, mostly well circumscribed neoplasm consisting of neoplastic epithelial cells arranged in anastomosing narrow to thick cords, tubules, rosette formations or solid, faintly packeted sheets supported by delicate fibrovascular septae. The neoplastic cells range from polygonal to cuboidal to columnar with indistinct cell borders, scant to moderate amounts of eosinophilic, finely granular cytoplasm, round-oval nuclei with finely to coarsely stippled chromatin and 1-2 small, poorly distinct, magenta to basophilic nucleoli. There is mild anisocytosis and anisokaryosis with 23 mitoses in 2.37 mm<sup>2</sup>.

## Interpretation:

Clitoral carcinoma

## Comments:

Histopathology is consistent with a clitoral carcinoma. Clitoral carcinoma is a rare neoplasm of the female canine genital apparatus, originating from the apocrine glands located at the base of the clitoris and in the clitoral fossa. This neoplasm has many overlapping clinical and microscopic features with apocrine gland adenocarcinoma of anal sac origin, including a propensity to cause the paraneoplastic syndrome of "hypercalcemia of malignancy". No breed prevalence is yet recognized for this entity, and most cases occur in middle aged to elderly dogs. This neoplasm does not appear to be hormone-dependent as most reported cases have occurred in dogs who were spayed early in life. Clinically, these neoplasms may be found incidentally but, more commonly, they are associated with clinical signs of lower urinary tract disease including presence of a visible vulvar mass, polyuria-polydipsia, frequent licking of the vulva, or hemorrhagic vulvar discharge. The long term outcome of clitoral carcinoma is poor in the majority of cases with disease being characterized by aggressive and infiltrative regional growth with a high incidence of locoregional lymph node metastasis. However, cases in which surgical excision can be performed and that are free from metastases may have a better prognosis. Dogs with metastatic disease most commonly have locoregional metastases in the inguinal, medial iliac, and internal iliac lymph nodes. In one study, despite the presence of metastatic disease, dogs that received palliative treatment, either debulking surgery, chemotherapy (e.g. prednisone, carboplatin), or treatment for management of hypercalcemia of malignancy, survived between 5 and 14 months. In this same study, dogs without evidence of metastatic disease (n = 2) were alive and free of disease at the time of the last staging workup, 100 and 500 days postdiagnosis (Verin et al., 2018).

## References:

Verin R et al. 2018: Canine Clitoral Carcinoma: A Clinical, Cytologic, Histopathologic, Immunohistochemical and Ultrastructural Study. Vet Pathol 2018; 55(4): 501-509.

# BSTP CORNER

## BRITISH SOCIETY OF TOXICOLOGICAL PATHOLOGY

### Notice of Future Meetings



#### Virtual Continuing Education Symposium 12: Cardiovascular System

1st – 10th July 2025

Tuesday, Wednesday and Thursday

13.00 – 17.00 (GMT+1, London/UCT+1)

CES 12 will be held over two weeks – on the afternoons of Tuesday 1st, Wednesday 2nd, Thursday 3rd, Tuesday 8th, Wednesday 9th and Thursday 10th July 2025, from 13.00 – 17.00 (GMT+1, London/UCT+1) each day.

Approved by the Royal Society of Biology for the purposes of CPD, this event may be counted as approximately 63 credits. Approximately 21 hours of educational activity will be recorded on Attendance Certificates.

#### **BSTP CES 12: Cardiovascular System - REGISTRATION IS NOW OPEN!**

**Exciting News!** One of the six afternoons of CES 12 will be entirely dedicated to Clinical Pathology, and the BSTP is offering a single-day registration for this specific day. Wednesday 9th July 2025 is perfect for colleagues interested in clinical pathology who prefer not to attend the full symposium. Join us for a day of focused clinical pathology learning delivered by Dr Laura Boone! Attendance to the clinical pathology day is, of course, included in the full symposium registration.

**Reduced rates for early career pathologists and free place bursaries are available.**

For more information or to register visit: <https://www.bstp.org.uk/events/ces-12-cardiovascular-system/>

If you have any queries, please contact the event organiser: Hg3 Conferences Ltd – [events@hg3.co.uk](mailto:events@hg3.co.uk)

#### **2nd Joint Congress of the BSTP and ESTP**

Manchester, UK

23rd – 26th September 2025

The British Society of Toxicologic Pathology (BSTP) and the European Society of Toxicologic Pathology (ESTP) are pleased to invite you to the 2nd Joint ESTP/BSTP Toxicologic Pathology Congress entitled 'Carcinogenicity in the 21st Century; challenges of new methodologies, strategies, and their impact on pathologists'.

#### **REGISTRATION IS NOW OPEN - Take advantage of the Early Bird Fee and register before 23rd June 2025!**

The program will include new methodologies and alternatives for the assessment of carcinogenicity testing of agrochemical and pharmaceuticals, predicting carcinogenetic potential of compounds at early stages, carcinogenicity assessment of new modality drugs, risk assessment and human relevance of neoplastic and non-neoplastic findings in carcinogenicity studies, and guidelines through plenary lectures, oral presentations of original scientific work, interactive case presentations, and poster session.

In conjunction, an IATP symposium and ESTP expert workshop (Female Reproductive System) will take place immediately before and after the congress, respectively.

The social program will include the welcome reception (23rd September 2025) and congress dinner (25th September 2025). **During this event help us celebrate the 40th anniversary of the BSTP – 1985 – 2025!**

To register and for up-to-date information keep checking –

<https://www.bstp.org.uk/events/2nd-joint-congress-of-the-bstp-and-estp/> or

[https://www.esvp-ecvp-estp-congress.eu/estp\\_congress](https://www.esvp-ecvp-estp-congress.eu/estp_congress)

If you have any queries, please contact the congress secretariat: Partners in Congress Organisation – [m.kostons@pcopartners.nl](mailto:m.kostons@pcopartners.nl)



# BSTP CORNER

## BSTP Webinars

Registration to take part in BSTP webinars is free with the login details provided at least one week prior to the date of the webinar.

STP/BSTP Webinars: Dates for webinars in 2025 will be available in due course.

IATP/BSTP Webinar: Dates for webinars in 2025 will be available in due course.

ESTP/SFPT/BSTP and ECVF/ESVP\* Webinars: \*Sponsored by the ESTP, SFTP, BSTP and NVT: Dates for webinars in 2025 will be available in due course.

Keep checking the BSTP website for up to date information - [BSTP website](#) and also the [group LinkedIn page](#)

## Non-BSTP Events

If you are interested in attending any events organised by other organisations visit –

<https://www.bstp.org.uk/non-bstp-events/>

If you would like details of any other events including on the BSTP website or publicising in the next 'Diary Dates' email, please send the information to the BSTP Secretariat – [bstpsecretariat@gmail.com](mailto:bstpsecretariat@gmail.com)

## Future BSTP events are due to take place as follows:

1st – 10th July 2025	CES 12 - Cardiovascular System
23rd – 26th September 2025	2nd Joint Congress of the BSTP and ESTP

November 2025	40th Annual General Meeting
March 2026	CES 13 - Lymphoid & Haematopoietic Systems
July 2026	CES 14 - Musculoskeletal System & Skin
November 2026	41st Annual Scientific Meeting & Annual General Meeting

The order of the CES will depend on the availability of high-quality speakers who are world experts in their particular field to present at the relevant meeting. Details of future meetings are correct at the time this booklet is generated, the BSTP will not be held responsible for any changes to dates, topics and venues of these meetings.

For up-to-date information on any events organised by the BSTP, please check the website –

<https://www.bstp.org.uk/bstp-events/> or <https://www.bstp.org.uk/events/bstp-webinars-and-podcasts/>

## BSTP Contact Details

BSTP | PO Box 819 | Harrogate HG1 9XF | North Yorkshire | UK

Tel: 07894 123 533

Email: [bstpsecretariat@gmail.com](mailto:bstpsecretariat@gmail.com)

Website: <https://www.bstp.org.uk>

LinkedIn: [British Society of Toxicological Pathology](#)

Registered Charity No: 1043793

# LCPG CORNER

## CALENDAR OF ACTIVITIES IN LATINAMERICA

Country	City	Event	Speaker	Subject	Date	Organizer
Argentina	Córdoba	XIV Reunión Argentina de Patología Veterinaria	Don Meuten, Verena Affolter, Claudio Barbeito, Juan Micheloud, Francisco Uzal, others.	Multiple	Sept 24-26	Renata Brizzio
Brazil	Cuiabá (Mato Grosso)	ENAPAVE	Amy Durham	Hematopoietic pathology	Sept 9-12	Renato de Lima Santos
	Sao Paulo	IV Annual Latin American Roadshow	Brian Murphy	Oral and skeletal pathology	Nov 20-21	Renee Amorim
Chile	Santiago	IV Annual Latin American Roadshow	Brian Murphy	Oral and skeletal pathology	Nov 17-18	Federico Cifuentes
Colombia	TBD	TBD	Raquel Rech	Neuropathology	TBD	Paola Barato
Costa Rica	San José	TBD	Carlos González	Forensic pathology	TBD	Juan Diego Hidalgo
Ecuador	Quito	I Ecuadorian Seminar	Francisco A Uzal, Francisco R Carvalho	Multiple	Dec TBD	Francisco Cabrera
Guatemala	Ciudad de Guatemala	IV Guatemalan Seminar	Javier Asin, Melissa Macías	Gross pathology of ruminants	July 17	Deborah Rodríguez
México	Mexico city	IV Annual Latin American Roadshow	Brian Murphy	Oral and skeletal pathology	Nov 24-25	Itzel Yañez
	On line	5 <sup>th</sup> Necropsy Course	Laura Romero, Rubén López, Francisco Carvalho, María del Carmen Carmona, Alfredo Pérez, Diana Galván, Mario Bedolla, Luis García, Elizabeth Rodríguez, Mireya Juárez, Vicente Ávila, Carlos González, Elizabeth Morales, Félix Sánchez	Gross lesions in animals	Ap 20 - May 14	Rubén López
Nicaragua	Managua	Global Health Pathology Network + III meeting of the Nicaraguan division	Javier Asin, Melissa Macias, Francisco Carvalho	Multiple	Jul 21-24	Cristina Toledo
Paraguay	Asunción	TBD	TBD	TBD	TBD	Mirtha Suárez
Perú	Lima	TBD	TBD	Intestinal morphometry	TBD	Rosa Perales
Uruguay	Montevideo	11 <sup>th</sup> Meeting of the Uruguayan Division	Marti Pumarola, Fabiano Sant'Ana	Veterinary Neuropathology	Jun 23-24	Jose Manuel Verdes
Venezuela	Barquisimeto	III Annual Meeting of the Venezuelan Division	TBD	TBD	Oct 17-18	Yaritza Salas

# LCPG CORNER



Davis-Thompson  
Foundation

## Seminar Series in Spanish 2025



**Seminarios en español 11:00am-12:30pm CDT**



**Intoxicaciones por plantas y micotoxinas en rumiantes**

**Franklin Riet-correa DVM, MSc, PhD**



**Patología en signátidos: caballitos de mar, dragones de mar y peces pipa**

nuevo horario  
12 pm

**Estefanía Montero Cortijo DVM, PhD**



**Patología ósea**

**Fernando Dutra DVM, MSc**



**Patologías orales en perros y gatos. Enfoque clínico**

nuevo horario  
12 pm

**Suanúa Serrano García DVM**



**Descripción histopatológica de neoplasias**

**Joaquin Ortega, DVM, PhD, DACVP**



**Diagnóstico de diarreas en rumiantes**

**Paco Uzal DVM, MSc, PhD, Dipl. ACVP**

Registration for individual sessions is  
available on the website



# LCPG CORNER



## RONDAS DE HISTOPATOLOGÍA DEL LCPG 2025 10:30 - 11:30 CT



Davis-Thompson  
Foundation



**Casos de Rotina**  
**Cesar Menk, DVM, DACVP**  
**em Português**



**Enfermedades virales, parte II**  
**Mariano Carossino, DVM, PhD, DACVP, DACVM**  
**en español**



**Casos curiosos em peixes ornamentais**  
**Felipe Pierezan, DVM, MS, PhD, DACVP**  
**em Português**



**Enfermedades de Rumiantes**  
**Javier Asin, DVM, PhD, DECVP**  
**en español**



**Patologia no planeta dos macacos.**  
**Mayane Facin, DVM, PhD, DACVP**  
**em Português**



**Nódulos esplénicos en perros**  
**Federico Cifuentes, MV, PhD, DACVP**  
**en español**



**Casos variados**  
**Ileana Miranda, DVM, MSC, DACVP**  
**em Português**

[Click here to register for individual seminars](#)

# LCPG CORNER

The graphic features a teal background with a stylized road winding through the center. At the top left is the Davis-Thompson Foundation logo, a shield with a caduceus and the text "Davis-Thompson Foundation". To its right is the "LATIN AMERICAN ROAD SHOW 2025" logo, a circular emblem with a sunburst and a road. Further right is the "LCPG" logo, a stylized blue figure with the letters "LCPG" vertically. The central text "Patología oral y ortopédica" is in a large, bold, white font with a red outline. On the left, a photo of Brian Murphy is overlaid on a scooter illustration, with his name and credentials "Brian Murphy DVM, PhD, DACVP" below. The road has three location pins: Chile (Nov 17-18), Brazil (Nov 20-21), and Mexico (Nov 24-25), each with a "Register here" button. The flags of Chile, Brazil, and Mexico are used for the pins.

**Patología oral y ortopédica**

**Brian Murphy**  
DVM, PhD, DACVP

**CHILE**  
Nov 17-18  
Register here

**Brasil**  
Nov 20-21  
Register here

**México**  
Nov 24-25  
Register here

# LCPG CORNER

## XIV REUNION ARGENTINA DE PATOLOGIA VETERINARIA

24, 25 Y 26 DE  
SEPTIEMBRE, 2025

Actividades pre jornada el 23!

ORADORES: DON MEUTEN, VERENA AFFOLTER, CLAUDIO BARBEITO,  
JUAN MICHELOUD, FRANCISCO UZAL, Y MÁS

### EVENTOS PREVIOS

► Taller de escritura científica

### EVENTOS ESPECIALES

Taller de histopatología ◀

Encuentro SAOV ◀



EN PERSONA



UNIVERSIDAD CATOLICA DE CORDOBA, ARGENTINA



Davis-Thompson  
Foundation



Instituto Nacional de  
Tecnología Agropecuaria



UNIVERSIDAD  
CATÓLICA  
DE CÓRDOBA  
JESUITAS

[Click here to register](#)



## LCPG CORNER



Davis-Thompson  
Foundation



UNIVERSIDAD  
CATÓLICA  
DE CÓRDOBA  
JESUITAS

**18° Seminario de la Fundación  
Davis-Thompson con la  
XIV Reunión Argentina de  
Patología Veterinaria 2025**

# Taller de Histopatología

## Convocamos a presentar casos interesantes



**Fecha de presentación: 25 de septiembre**  
**Fecha final para el envío de casos: 30 de marzo**



**Envío de casos: [fauzal@ucdavis.edu](mailto:fauzal@ucdavis.edu)**



**EN PERSONA**

**UNIVERSIDAD CATOLICA DE CORDOBA, Argentina**

**CLOSED**

# LCPG CORNER



Facultad de Veterinaria  
Universidad de la República  
Uruguay



Davis-Thompson  
Foundation



UNIVERSIDAD  
DE LA REPÚBLICA  
URUGUAY

11º Seminario Uruguayo de la Fundación Davis-Thompson

## Neuropatología Animal: Bases para el diagnóstico anatomopatológico

June 23 & 24, 2025



**José Manuel Verdes**  
Responsable



**Martí Pumarola**



**Fabiano Sant'Ana**



Faculty of Veterinary.  
Universidad de la Republica.  
Route 8, km. 18 \$ route 102  
Montevideo, Uruguay.



en persona



\$U 1200

[Click here to register](#)

# LCPG CORNER



Davis-Thompson  
Foundation



Humane  
World for  
Animals™

## Curso de Patología Forense Veterinaria

**29 a 30 de Agosto, 2025**



**Carlos M. González Riveros**  
MV, Mphil, PhD



Presencial



**\$50 veterinarios**  
**\$40 estudiantes**



Escuela de Medicina y Cirugía Veterinaria San Francisco de Asís.  
Vázquez de Coronado, San José, Costa Rica

More information will be available on the website soon



# LCPG CORNER



**LATIN COMPARATIVE  
PATHOLOGY GROUP  
PRESENTS:**

## THE NEW WORLD SCREWWORM

***AN UNWELCOME RETURN?***



**PRESENTER:**

DR. ROGER RAMIREZ BARRIOS, DVM, MS, PHD, DACVM (PARASITOLOGY)  
DEPARTMENT OF BIOMEDICAL SCIENCES AND PATHOBIOLOGY  
VIRGINIA MARYLAND COLLEGE OF VETERINARY MEDICINE  
VIRGINIA TECH

**Registration is free but required.**

[Register Here!](#)

**Gaylord Rockies Resort &  
Convention Center**

**November 1, 2025  
7:00 AM-8:00 AM**



Davis-Thompson  
Foundation



# LCPG CORNER

## Taller Colombiano DTF-LCPG 2025 Neuropatología Veterinaria

October 14 y 15, 2025



**Raquel Rech**  
DVM, MS, PhD, DACVP



**Henry Benavidez**  
DMV, InternUNAM, MSc



En persona



126,500 - 325,000



Universidad de Caldas. Manizales, Caldas, Colombia



Davis-Thompson  
Foundation



Universidad de Nariño  
Fundada en 1934



Universidad de Nariño  
ACREDITADA EN ALTA CALIDAD  
RESOLUCIÓN MEN 10847 - MAYO 23 DE 2017

CORPAVET®



UNIVERSIDAD  
NACIONAL  
DE COLOMBIA



ACREDITACIÓN INSTITUCIONAL  
DE ALTA CALIDAD  
Resolución MEN 10847 - Mayo 23 de 2017



SANMARTÍN  
Fundación Universitaria



Unilasallista★  
Corporación Universitaria

More information will be  
available on the website soon



# LCPG CORNER



Facultad de Ciencias  
**VETERINARIAS**



UNIVERSIDAD  
NACIONAL  
DE LA PLATA

## XXVI Interinstitutional Seminar of Histopathology in Argentina

*by Dra. Mariana Machuca and Mag. Natalia Caggiano*

The XXVI Interinstitutional Seminar of Histopathology in Argentina was held in the city of La Plata on June 12, 2025. These meetings have been organized two or three times a year since 2012 by the Laboratory of Special Pathology Dr. B. Epstein (LAPEVET) of the Faculty of Veterinary Sciences at UNLP, in collaboration with the Pathology Area of the Faculty of Veterinary Sciences at the University of Buenos Aires (UBA) and Pathobiology Research Group, INTA Castelar. Their primary objective is to enhance the description and evaluation of microscopic lesions and to develop diagnostic interpretation skills. The seminars provide a valuable and supportive space for sharing interesting cases, exchanging ideas, and training teachers and advanced students in histopathology.

The seminar was attended by 35 participants, including pathologists, professors from 7 institutions, postgraduate students, and private practitioners from Argentina. Some participants joined virtually from various provinces and overseas.



On this occasion, the traditional histopathology seminar featured the presentation of nine fascinating cases involving domestic and non-domestic species, contributed by seven different institutions or private practitioners. The slides were scanned by Pathobiology Research Group, INTA Castelar, allowing all participants to review the cases virtually before the seminar.

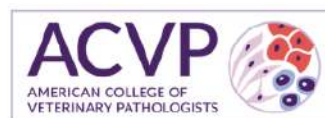
Thank you to all the participants!



# LCPG CORNER



Davis-Thompson  
Foundation



## THE LCPG SESSION

*at the ACVP Annual Meeting, October 27th, 2025*

12:00 - 12:30 PM

**Case presentations**

12:30 - 1:30 PM

**Bone & Joint Pathology**

1:30 - 2:30 PM

**Business meeting**



**Grad students and  
residents**



**Linden Craig**  
DVM, PhD, DACVP



**Members +**



**All events are open to all annual meeting registrants**

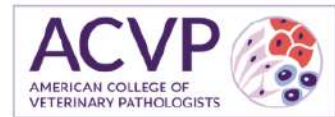


**New Orleans, USA**

# LCPG CORNER



Davis-Thompson  
Foundation



## Have a cool case to share?

*Present it at ACVP Annual Meeting*

*During the LCPG session, October 27<sup>th</sup>, 2025*

**Calling all veterinary graduate students and residents to submit abstracts for oral presentation**

**220 words**

**English**

**by June 27**

*email: [mmaciasrioseco@ucdavis.edu](mailto:mmaciasrioseco@ucdavis.edu)*

# LCPG CORNER

A graphic for the Latin Comparative Pathology Group (LCPG). It features a central map of Latin America with a purple and blue color scheme. Surrounding the map are five circular inset images: a cow's head with a red tumor, a microscopic view of purple-stained cells, a white cat's face with a red tumor, a cross-section of a reddish-brown organ, and a group of people in a lecture hall. The LCPG logo is in the top left corner.

**Become a member of the Latin Comparative Pathology Group**

**LCPG:**

- Provides Diagnostic Exercises
- Offers travel awards
- Coordinates externships in US labs for Latin Americans
- Organizes and lectures in Latin American seminars and courses

Click here for more  
information about  
how to become a  
member



# GHPN SCHOLARSHIPS



## DTF-GHPN Education Scholarship For Select DTF On-Line and/or Course Material



**Background.** The Global Health Pathology Network (GHPN), under the umbrella of the Davis-Thompson Foundation (DTF) for Veterinary Pathology, conducts workshops in resource-constrained settings focused on enhancing veterinary diagnostic abilities using interactive educational modalities and adult learning principles. In part, the success of the GHPN training workshops is built on the successes of in-country veterinary pathologists and professionals in various locations worldwide. Consequently, to expand the sphere of the network through the development of capable, motivated professional cadre, the GHPN recognizes the importance of practicing professionals to have the opportunities for continued professional development.

**Objective.** Through GHPN's alignment with the DTF, the DTF will offer up to 10 educational scholarships to attend select DTF on-line courses and/or have access to the course material at no-cost.

### Application Criteria.

***This scholarship is geared toward professionals without access to traditional residency training programs.***

All applicants must prepare a 2-3 paragraph statement (no more than 300 words) addressing the following:

- Biographical information to include current work or academic history;
- Reason(s) for applying for the DTF educational scholarship;
- If awarded, the applicant's willingness to host a future GHPN workshop in his/her country.

# GHPN SCHOLARSHIPS

**Selection procedures and policies.** GHPN leadership will screen all applications and submit the qualified applicants to the DTF for recommendation and final approval. Scholarship selection is based on the assessment of the applicant's statement and will be determined based on several factors to include relevant background, aptitude, training and mentorship abilities in veterinary pathology and animal health. The applicant's current location of employment and/or training will also be considered to ensure equitable distribution of scholarship opportunities in the given year. Applicants should send applications 30-60 days prior to the beginning of the course to allow for adequate review of the application. A list of upcoming and/or recurring select courses can be found under "Events" tab on the DTF website: <https://davisthompsonfoundation.org/>

## **Application Procedures Questions and Answers:**

**Q:** Where and when are applications available/due?

**A:** Open registration; applications can be received at any time

**Q:** Where should applications be sent?

**A:** A signed PDF or word document paragraph statements are sent to [GH-PathNetwork@gmail.com](mailto:GH-PathNetwork@gmail.com)

**Q:** What additional information/documents must accompany the application?

**A:** None; the signed paragraph statement is the only item required

**Q:** How and when will the scholarship award winners be notified?

**A:** Award winners will be notified via electronic correspondence sent to the email address in the paragraph statement

**Q:** When can the educational scholarships to attend select DTF on-line courses and/or have access to the course material be used?

**A:** Once awarded, the scholarship can be used at any time over a 365 day period from the date at which the scholarship is awarded.

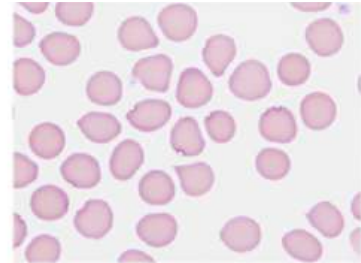
Any additional questions regarding the DTF-GHPN educational scholarships and/or the GHPN general can be submitted to [GHPathNetwork@gmail.com](mailto:GHPathNetwork@gmail.com)

# MISCELLANEOUS ANNOUNCEMENTS

Have you seen a Pathology Error published in a scientific journal?

Help us determine the extent of the problem

Submit to the **ACVP Errors in Publications Web Portal**  
<https://www.acvp.org/page/ErrorsinPublication>



Click here to listen  
to past episodes of  
the podcast



## Check out our archive!

Click here





# MISCELLANEOUS ANNOUNCEMENTS



**Davis-Thompson  
Foundation**



**NEW  
ARRIVAL**



**CHECK OUT OUR STORE  
FOR BOOKS AND MERCH**

**CLICK HERE** 

# MISCELLANEOUS ANNOUNCEMENTS



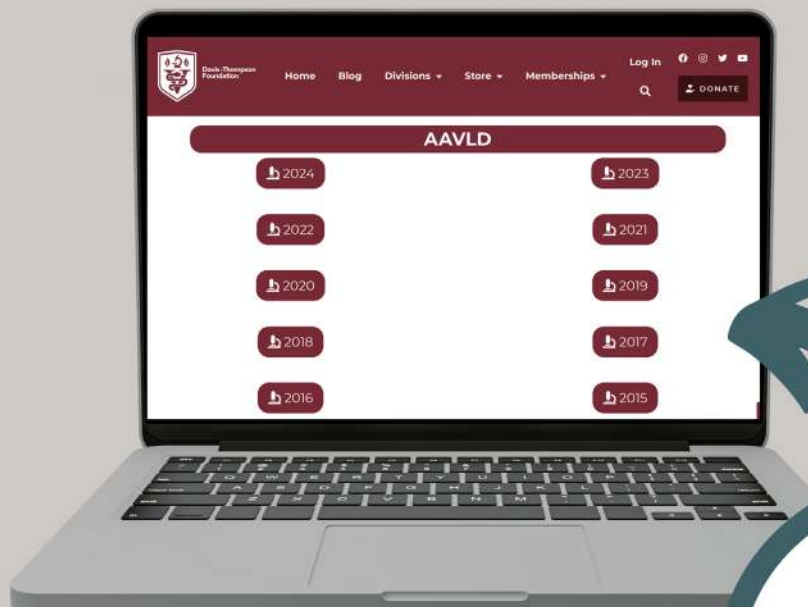
Davis-Thompson  
Foundation



*Countless Slides, One Click!*

## NOAH'S SLIDEBOX

All AAVLD Annual meeting slides, since 2000  
are available for **FREE** in the  
Davis-Thompson Foundation website

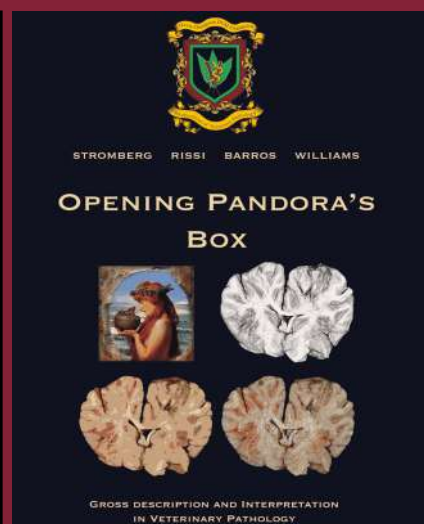
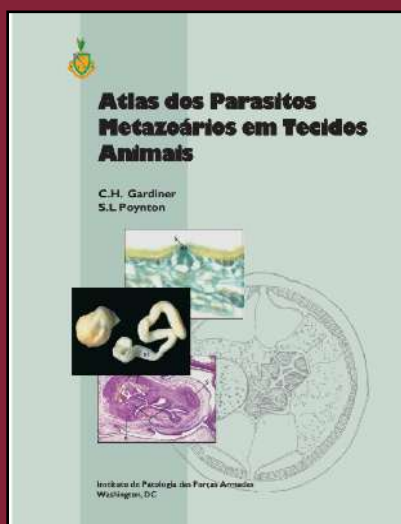
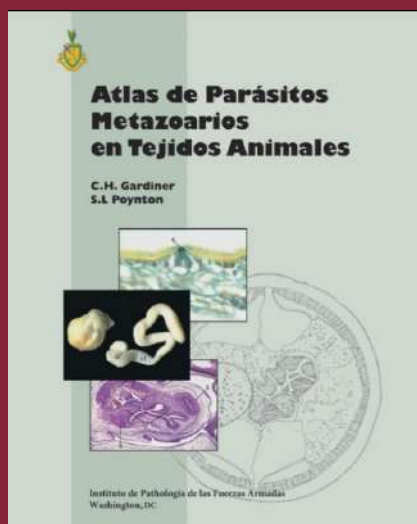


All at Your Fingertips! Click here:

[www.davisthompsonfoundation.org](http://www.davisthompsonfoundation.org)

NOAH'S SLIDEBOX

# MISCELLANEOUS ANNOUNCEMENTS



[Click here](#) to Get a Digital Download of our e-books!

## RETIRING?

Have slides left over from your recent slide seminar? Just looking to free up some storage space? The Foundation is looking for additional glass slides, kodachromes and other similar materials for its Correspondence Division and Study Centers. All materials should be well identified with as much accompany history and discussion as possible, as these materials are expressly used for teaching. Moreover, as the Foundation is a publicly donative charity, all donated materials are tax-deductible. For more information, please contact Dr. Bruce Williams at [bruce.h.williams.dvm@gmail.com](mailto:bruce.h.williams.dvm@gmail.com).

## Davis-Thompson Foundation Pathology Externship

Since 1980, the Davis-Thompson Foundation lab sites have hosted more than 125 veterinary students at 8 participating diagnostic laboratories. These students usually have a strong interest in pathology itself or zoo or poultry medicine that require a strong pathology background. The Foundation is always interested in having veterinary students apply for an externship and we would like to add more externship sites that do not usually have veterinary students, to help increase their interest and knowledge of pathology with some off-campus experience. For more information, contact Dr. Jim Britt, [jobritt@sbcglobal.net](mailto:jobritt@sbcglobal.net); 501-912-1449.



Davis-Thompson  
Foundation

DAVIS-THOMPSON FOUNDATION

Phone: 847-367-4359

Fax: 847-247-1869

[davis-thompsonfoundation.org](http://davis-thompsonfoundation.org)

[cldavisdvm@comcast.net](mailto:cldavisdvm@comcast.net)

JULY 2025