



Diagnostic Exercise

From The Davis-Thompson Foundation*

Case # **213**; Month: **May**; Year: **2023**
Question Sheet

Contributors: Dr. Cleide Spröhnle-Barrera, DVM, DVClinSc (candidate); Professor Robert Doneley, BVSc, FANZCVS (Avian Medicine); Dr. Viviana Gonzalez-Astudillo, BVSc (hons), MNR, PhD, Dipl. ACVP (Anatomic Pathology); School of Veterinary Science, The University of Queensland, Gatton QLD 4343 Australia. v.gonzalez@uq.edu.au

Clinical History: A 4-month-old, male, Murray River short neck turtle (*Emydura macquarii*; Figure 1) was presented with swelling around the thoracic inlet and pre-femoral fossa, suspected to be secondary to a renal infection secondary to water quality. In-house laboratory testing revealed anemia and hypoproteinemia (packed cell volume 8% [reference interval 18%-30%] and total protein 9 g/dl [reference interval, 2.5-4.2g/dL]). The turtle died suddenly while in hospital after a week of antimicrobial therapy.

Necropsy Findings: The subject was moderately dehydrated. Within the coelomic cavity was approximately 3-4 ml of clear translucent watery fluid (transudate). Diffusely, the liver was severely discolored pale brown (Figure 2). The intestines were distended up to 2 mm in diameter, filled with approximately 2 ml cream-colored to pale brown content.

Gross and Microscopic Images:



Figure 1



Figure 2

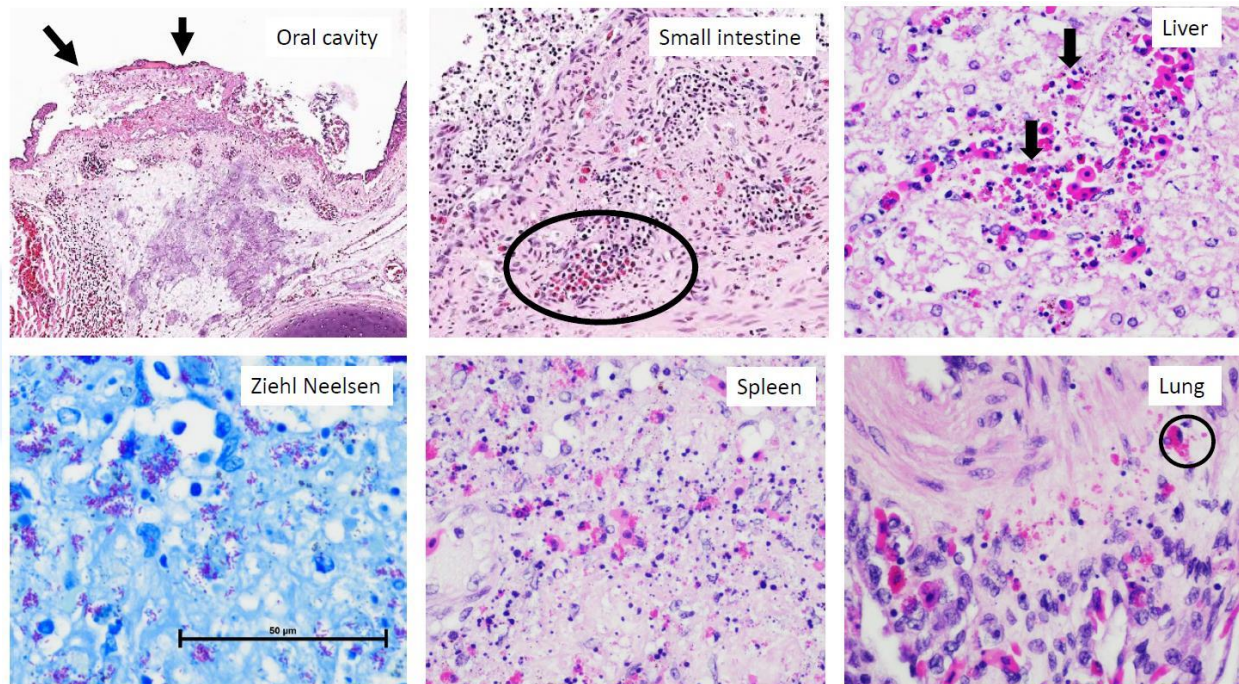


Figure 3

Follow-up questions:

Diagnosis and potential etiology

*The Diagnostic Exercises are an initiative of the **Latin Comparative Pathology Group (LCPG)**, the Latin American subdivision of The Davis-Thompson Foundation. These exercises are contributed by members and non-members from any country of residence. Consider submitting an exercise! A final document containing this material with answers and a brief discussion will be posted on the CL Davis website (http://www.cldavis.org/diagnostic_exercises.html).

Associate Editor for this Diagnostic Exercise: Saulo Pavarini

Editor-in-chief: Claudio Barros