



Davis-Thompson  
Foundation

# Diagnostic Exercise

## From The Davis-Thompson Foundation\*

Case #: **165** Month: May: **2021**  
*Question Sheet*

**Contributors:** Vanessa J. Oakes and Francisco R. Carvallo.  
Department of Biomedical Sciences and Pathobiology, Virginia-  
Maryland College of Veterinary Medicine, Virginia Tech, Blacksburg,  
VA. USA. [voakes@vt.edu](mailto:voakes@vt.edu)

**Clinical History:** A young adult, spayed female dog was presented for necropsy by animal control, with concerns for abuse in the form of chemical burns.

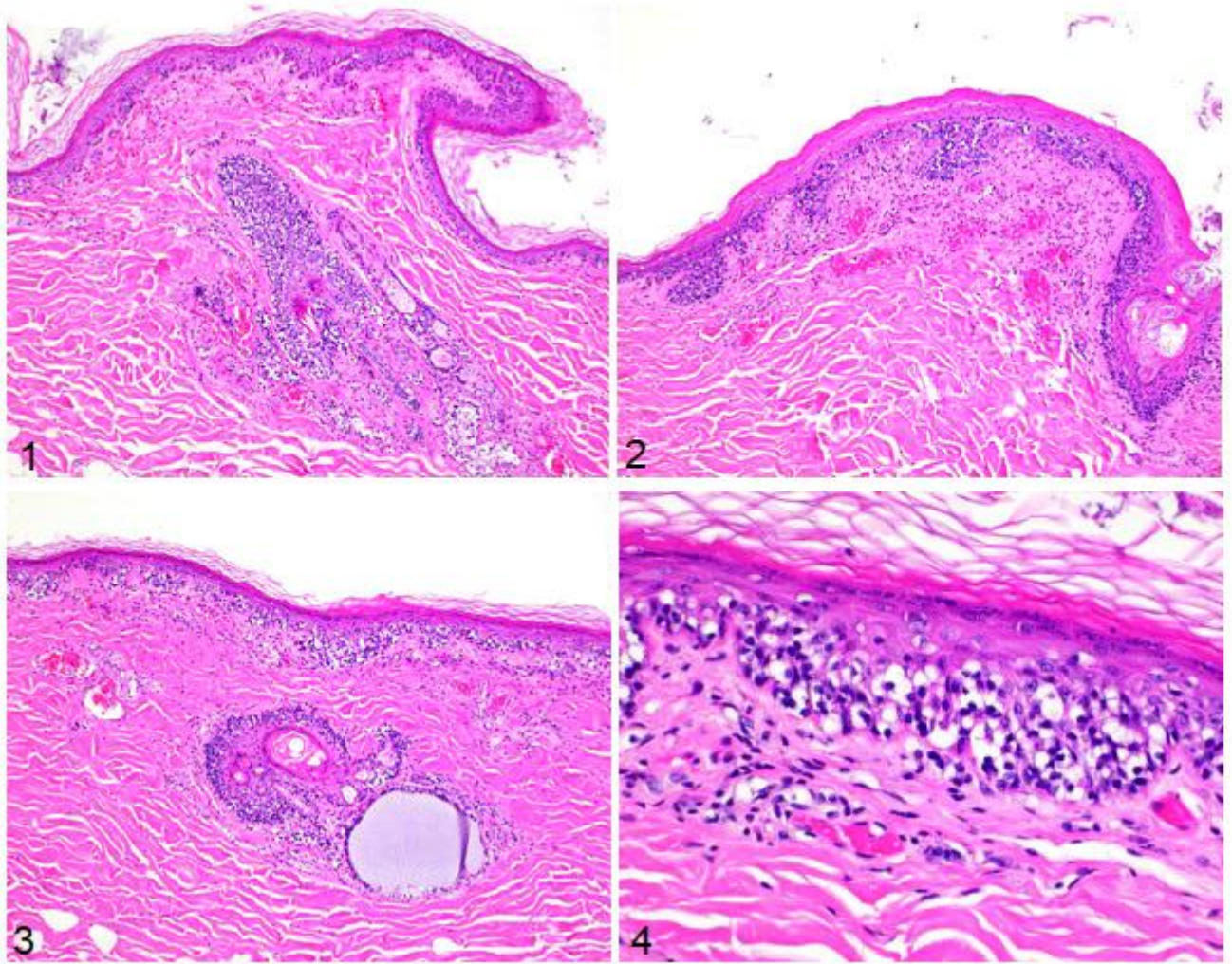
**Necropsy and Microscopic Findings:** There was marked alopecia and coalescing ulceration affecting approximately 60% of the integument, roughly evenly distributed over the body. Affected areas included the mucocutaneous junctions, the palmar and plantar surfaces of the limbs, the paw pads, and the nasal planum. Ulcers measured up to 1 cm in diameter, frequently coalesced, and varied in stage of development; some were prominent, dark red, and shiny

with roughened borders and others contained pink granulation tissue. In areas of alopecia without ulceration, the skin was smooth and glistening. The nails were variably sloughed; some digits possessed a bare quick and some had nails up to 3 cm long, but which were separating from the underlying quick. The dog was in adequate body condition.

### **Gross Images**



## Microscopic images



**Figures 1-4. Fig. 1-3:** Lymphocytes invade the epidermis, including the lining of hair follicles and adnexal structures. Within the superficial dermis there is a pleomorphic population of lymphocytes mixed with collagen and increased areas of neovascularization. H&E, 40x. **Fig. 4:** H&E 400x.

### Follow-up questions:

- *Morphologic diagnosis;*
- *Additional diagnostic tests*

**Associate Editor for this Diagnostic Exercise:** Francisco Carvalho  
**Editor-in-chief:** Claudio Barros