

## Diagnostic Exercise From The Davis-Thompson Foundation\*

Case #: **159** Month: **February** Year: **2021**

### *Question Sheet*

**Contributor:** Erin K. Morris, DVM, Diplomate ACVP. Case Contributor for the International Veterinary Pathology Coalition (IVPC); WRAIR-NMRC. Forest-Glen Annex, MD, Virginia Pierce, VMD, Maryland Department of Agriculture ([erinmorris4@gmail.com](mailto:erinmorris4@gmail.com))

**Clinical History:** A 2-year-old Egyptian Fayoumi rooster had sudden onset of limping in the right leg prior to rapidly collapsing.

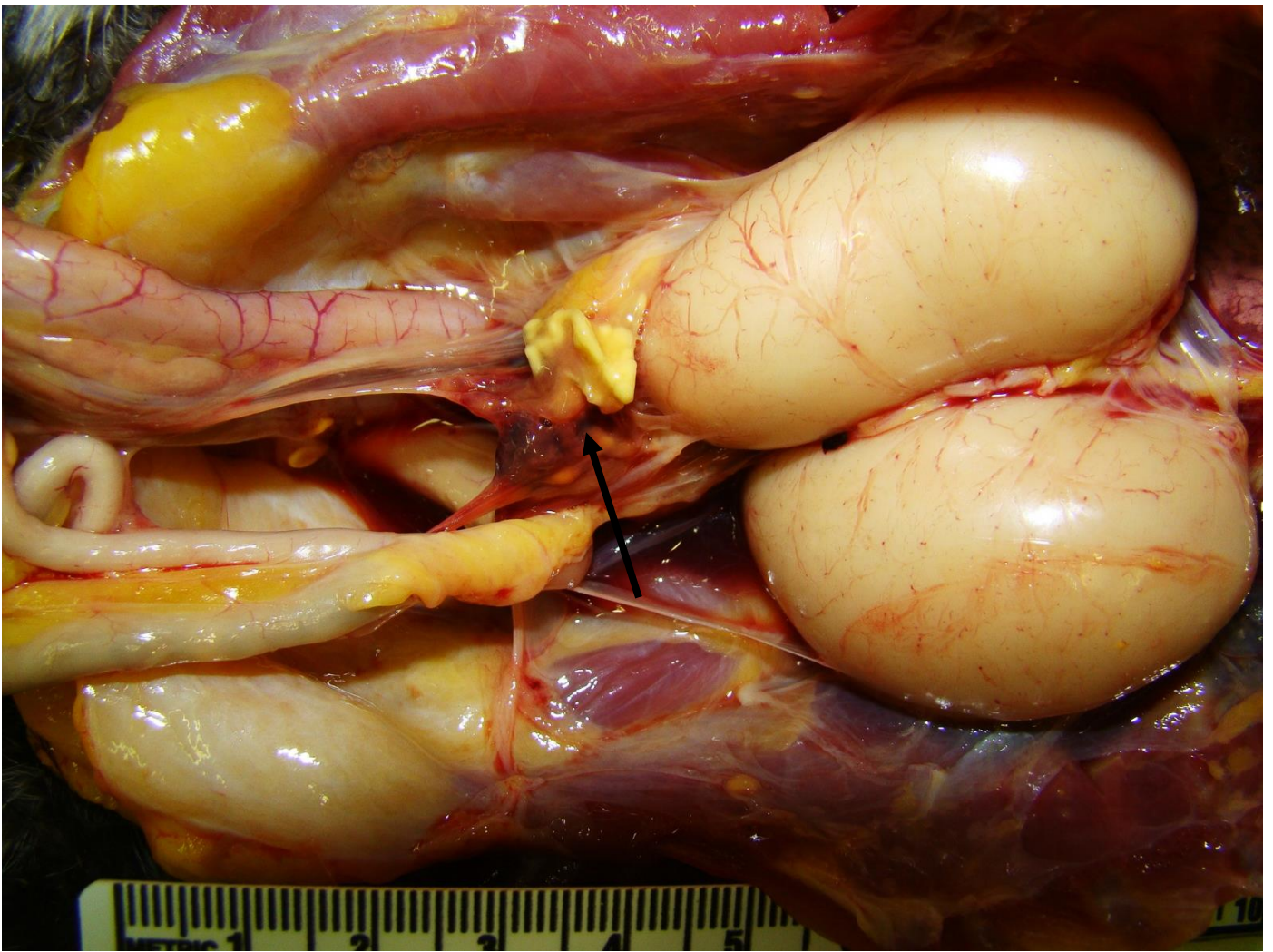
### **Necropsy Findings:**

There was blood in the oral cavity along with 85 ml of clotted blood in the coelom.

### **Gross and Microscopic Images:**



**Figure 1.** Head.



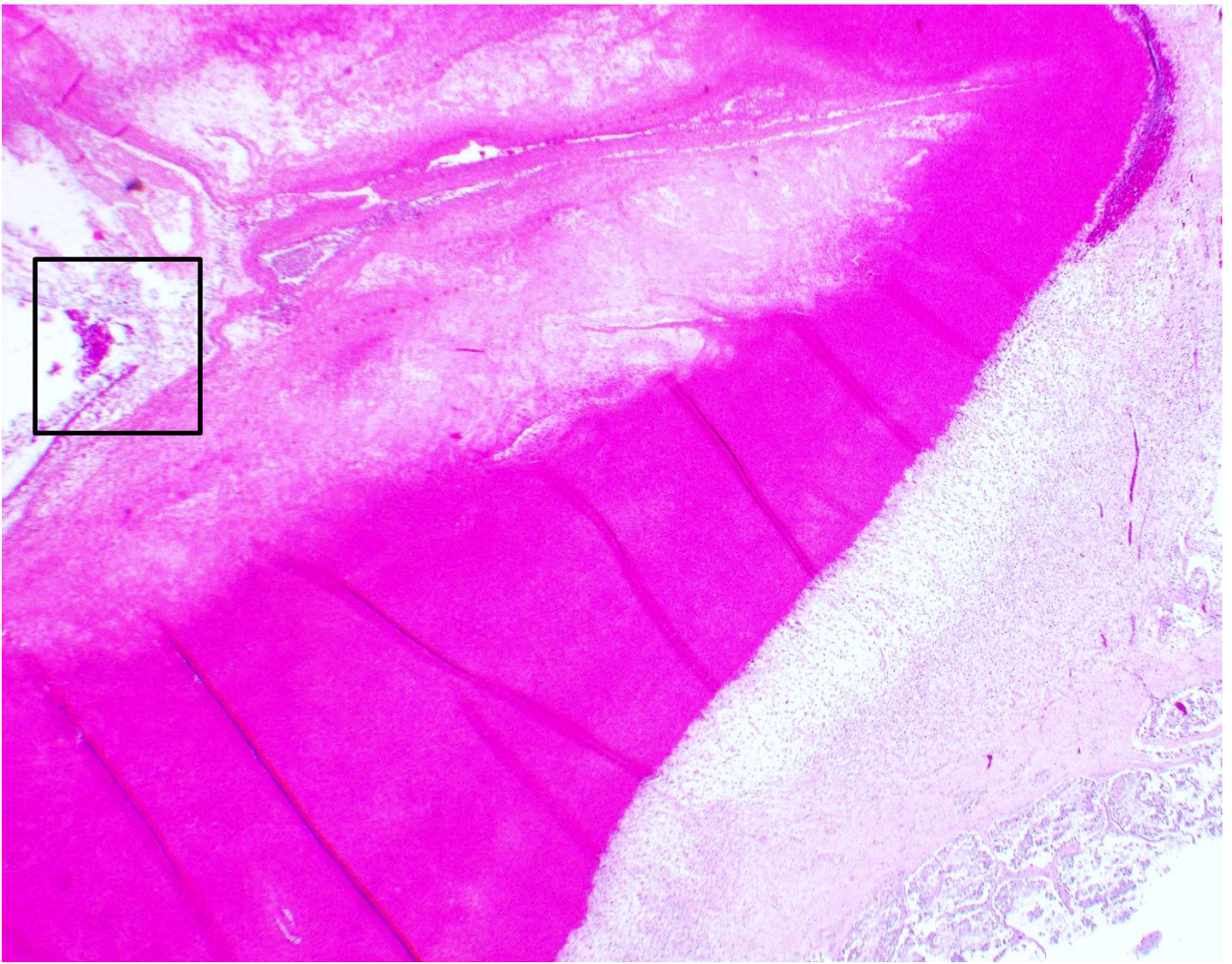
**Figure 2.** Coelom.





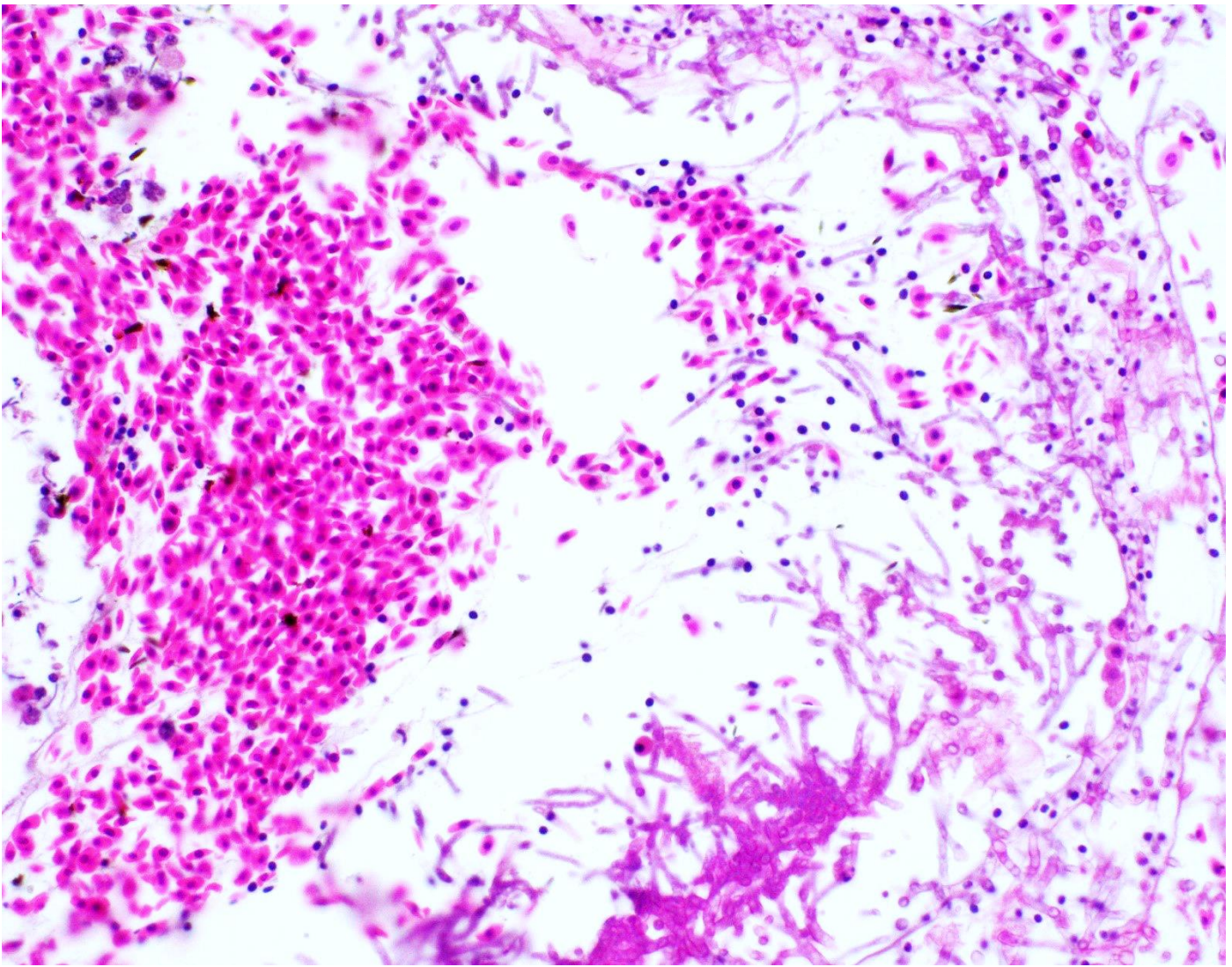
**Figure 3.** Testicular and peritesticular tissues, cross section.





**Figure 4:** 20X, H&E.





**Figure 5:** High power of field shown in inset of Figure 4. 400X, H&E.

**Follow-up Questions:** Histologic description; Morphologic diagnosis, Etiology.

The material has been reviewed by the Walter Reed Army Institute of Research. There is no objection to its presentation and/or publication. The opinions or assertions contained herein are the private views of the author, and are not to be construed as official, or as reflecting true views of the Department of the Army or the Department of Defense.

\*The Diagnostic Exercises are an initiative of the **Latin Comparative Pathology Group (LCPG)**, the Latin American subdivision of The Davis-Thompson Foundation. These exercises are contributed by members and non-members from any country of residence. Consider submitting an exercise! A final document containing this material with answers and a brief discussion will be posted on the CL Davis website ([http://www.cldavis.org/diagnostic\\_exercises.html](http://www.cldavis.org/diagnostic_exercises.html)).

**Editor-in-chief:** Claudio Barros

**Associate Editor for this Diagnostic Exercise:** Erin K. Morris