



Diagnostic Exercise

From The Davis-Thompson Foundation*

Case #: **230**; Month: **February**; Year: **2024**
Question sheet

Contributors: Regina T. Kemper, Brandon N. Dozer, and Maria Jose Navarrete Talloni.

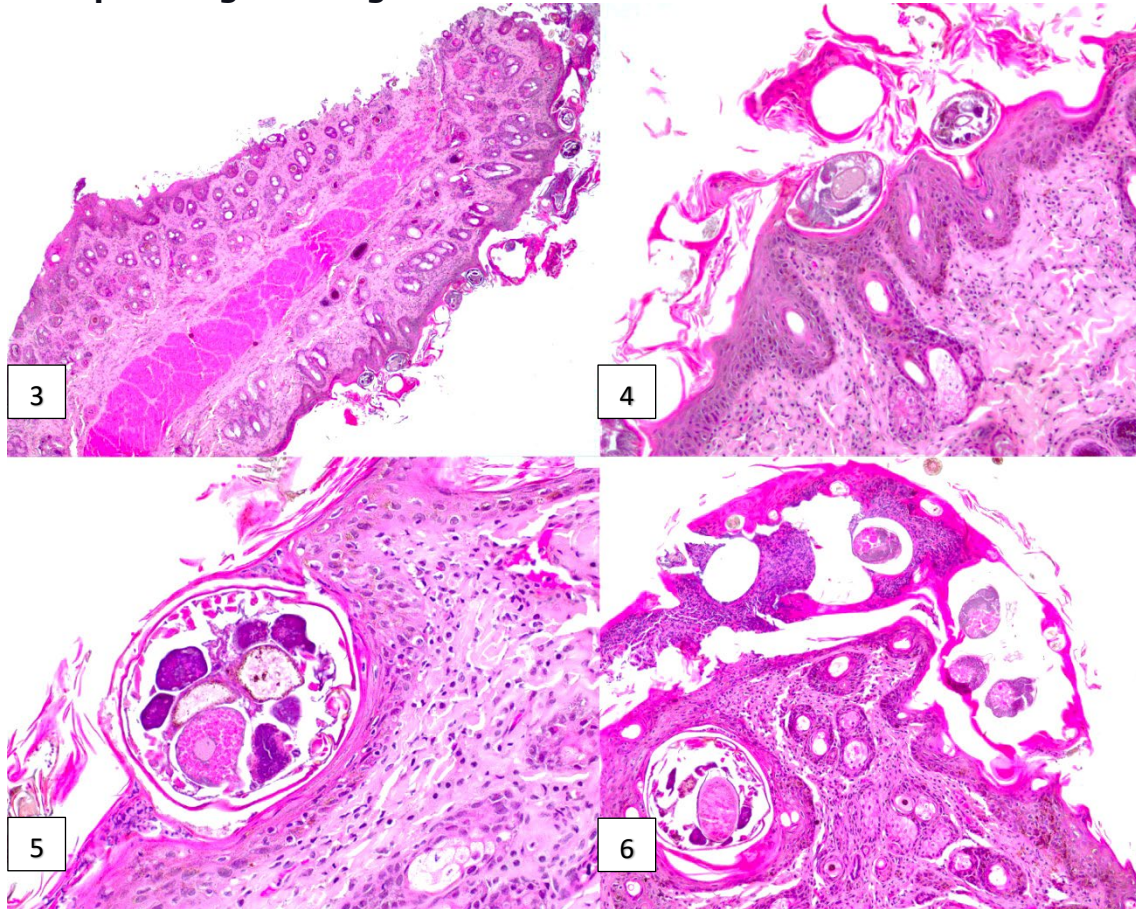
Department of Biomedical Sciences, Ross University School of Veterinary Medicine. rkemper@rossvet.edu.kn

History: A stray domestic short hair cat, approximately 7 weeks of age, died under the care of a first contact practitioner and was submitted to autopsy.

Necropsy findings: Gross examination revealed marked symmetric alopecia primarily affecting the limbs, with associated crusting, hyperkeratosis, and mild ulceration (Fig. 1). The lesions extended to the lateral and medial borders of the pinna. Similar lesions involving the nail beds, paw pads, and pressure points were evident (Fig. 2).



Histopathological images



Follow-up questions:

- *Microscopic description*
- *Morphologic diagnosis*
- *Etiology*
- *Disease*

*The Diagnostic Exercises are an initiative of the Latin Comparative Pathology Group (LCPG), the Latin American subdivision of The Davis-Thompson Foundation (DTF). These exercises are contributed by members and non-members from any country of residence. Consider submitting an exercise! A final document containing this material with answers and a brief discussion will be posted on the DTF website

(<https://davisthompsonfoundation.org/diagnostic-exercise/>).

Associate Editor for this Diagnostic Exercise: Saulo Pavarini

Editor-in-chief: Claudio Barros