



**Davis-Thompson
Foundation**

**C.L. DAVIS/S.W. THOMPSON
DVM FOUNDATION**

A tax-exempt, donative,
publicly-supported charity
For the advancement of veterinary
and comparative pathology

THE DAVIS–THOMPSON FOUNDATION NEWSLETTER

October

VOL. 55



Which of the following statements regarding monkey faced lamb syndrome in sheep is CORRECT?

- A. The malformation results from genetic mutations in collagen genes affecting craniofacial development
- B. It occurs when pregnant ewes ingest *Veratrum californicum* during a specific window of gestation
- C. The syndrome is primarily caused by viral infection of the ewe during early gestation
- D. The syndrome is associated with excessive Vitamin D supplementation in pregnant ewes

INSIDE THIS ISSUE

MONTHLY COVER IMAGE WINNERS:

Carlos Omar Schild¹, Ricardo Almeida da Costa², Federico Giannitti³, Franklin Riet-Correa⁴

1. California Animal Health and Food Safety Laboratory, University of California-Davis, Davis, CA, USA. 2. Veterinary practitioner, Santa Cruz do Sul, Rio Grande do Sul, Brazil. 3. Instituto Nacional de Investigación Agropecuaria, Colonia, Uruguay. 4. Universidade Federal da Bahia, Salvador, Bahia, Brazil

Answer: B

Signalment: 2-day-old, Deutsches Friesisches Milchschaaf lamb with low weight at birth and rarefaction of the face. Condition: Monkey faced lamb

-Dr. Katherine D. Watson - Cover Image Editor

-Dr. M. Donald McGavin - Cover Image Composition Analyst

Submit your image today (images@davisthompsonfoundation.org)!

- | | | | |
|-----------|---------------------------------|-----------|--------------------------------|
| 3 | Message from the CEO | 23 | AAVLD Pre-Meeting Workshop |
| 4 | New Tumors Fascicles | 24 | Feline and Equine Dermatopath |
| 5 | Histolloween Contest | 25 | Diseases of Laboratory Animals |
| 6 | Awards Ceremony | 26 | Scope 2025 |
| 7 | JVDI in Focus | 27 | Western Round Robin Case |
| 9 | Diagnostic Exercise | 30 | ASVP Corner |
| 11 | GHPN Philippines Review | 31 | IDEXX CaseConnexx Corner |
| 13 | Brazilian Symposium Review | 32 | BSTP Corner |
| 14 | Racehorse Workshop Review | 34 | BSVP Corner |
| 18 | HPAI in Dairy Cattle Seminar | 35 | STP Corner |
| 19 | Eastern European Roadshow | 36 | LCPG Corner |
| 20 | Histopatology Rounds in Spanish | 50 | GHPN Scholarships |
| 21 | Seminar Series in Portuguese | 52 | Obituary Paul Hildebrandt |
| 22 | ACVP Pre-Meeting Workshop | 55 | Miscellaneous Announcements |

CEO & CHAIRMAN OF THE BOARD

FRANCISCO A. UZAL

PRESIDENT

JEY KOEHLER

TREASURER

BRUCE H. WILLIAMS

ASIN, JAVIER

BRAYTON, CORY

BRICE, ANGELA

CARREIRA, VINICIUS

CARVALLO, FRANCISCO

CHAPMAN, JENNIFER

CORBIN, EMILY

CRAIG, LINDEN

DARK, MICHAEL

DE NEGRI, RAFAELA

DEL PIERO, FABIO

DOLENSEK, TAMARA

FIDDES, KELSEY

GENDRON-FITZPATRICK, ANNETTE

JEONG, KYU-SHIK

LANGOHR, INGEBORG

LOMBARDINI, ERIC

LYLE, TIFFANY

MCINNES, ELIZABETH

MÍRA, MÁNDOKI

OJOK, LONZY

PESAVENTO, PATTY

PRIESTNALL, SIMON

ROSS, TONY

STROMBERG, PAUL

ZADOK, RUBEN

MESSAGE FROM THE CEO

Dear colleagues,

Javier Asin and Jeann Leal, our brilliant managing editors, have done it again and the excellent October issue of the Davis-Thompson Foundation newsletter is presented to you. Thank you Javier and Jeann!

Please peruse these pages to find great training opportunities all over the world, face to face and virtual, and in several languages. The issue brings you the reports of our many recent activities.

The great piece of news this month is that the files of two new Fascicles in the series of Surgical Pathology of Tumors of Domestic Animals (# 5: Tumors of the Alimentary System, J. Munday editor; # 6: Tumors of the Nervous System, Dan Rissi editor) are already in the hands of the book designer, before heading for the printers. They will be available for sale in a few months. Please stay tuned!

If you are attending the annual meeting of AAVLD and/or ACVP, please consider registering for the excellent pre-meeting workshops offered by the Foundation (Cytology for anatomic pathologists at AAVLD, and Brain invaders: Tumors of the nervous system, at ACVP). And do not miss the fully revamped DTF Award Ceremony at ACVP. Also, remember that the Latin Comparative Pathology Group (LCPG, Latin American Division of the DTF) will be presenting the already traditional session at ACVP and, this year for the first time, we are also offering an LCPG session at the annual meeting of AAVLD.

And last but not least, my heartfelt thank you for all our great volunteers that are the heart of our Foundation. We could not have done it without you!

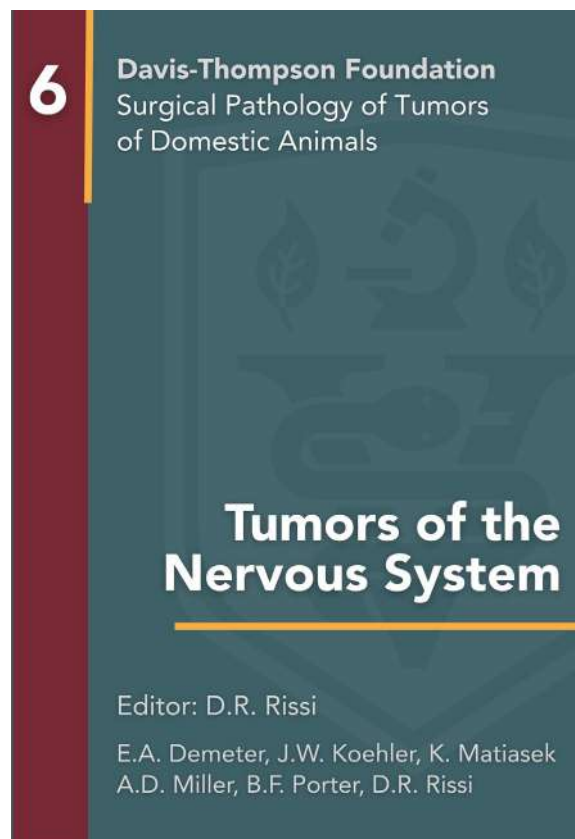
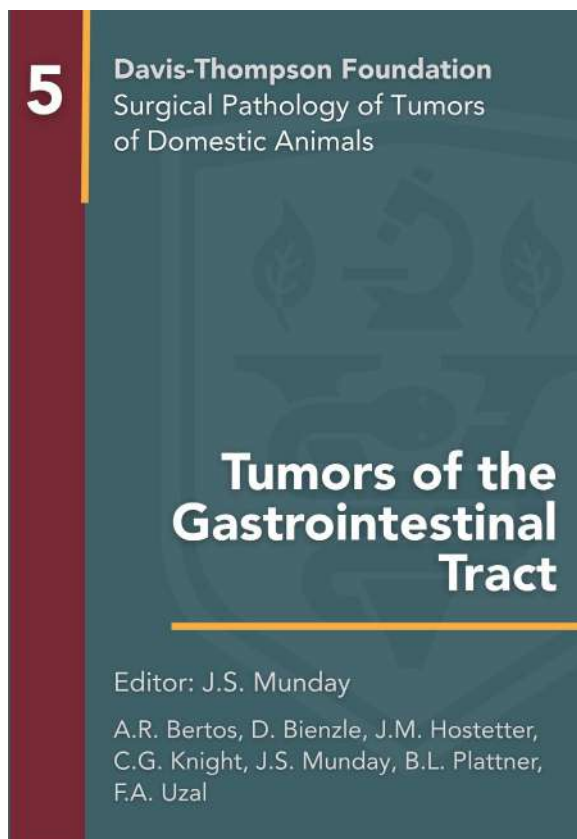
Looking forward to seeing you in one of our training activities.

Kind regards,

Francisco (Paco) Uzal
Chief Executive Officer
Davis-Thompson Foundation



NEW TUMORS FASCICLES



**AVAILABLE
SOON IN OUR
BOOKSTORE**

HISTOLLOWEEN CONTEST

A Halloween-themed poster for the HISTOLLOWEEN CONTEST. The background is dark and cloudy with silhouettes of trees and flying bats. Two glowing jack-o'-lanterns are positioned at the top center and bottom left. The Davis-Thompson Foundation logo is in the top left corner. The contest title is in large, glowing orange letters. The rules and prize information are in white and orange text. A black tote bag with the foundation's logo is shown in the bottom right corner.

 Davis-Thompson Foundation

HISTOLLOWEEN CONTEST

SHARE A HISTOLOGICAL IMAGE THAT RESEMBLES A HALLOWEEN THEME ON IG OR FB NOW THRU **OCT 15**
AND TAG US: **#DAVISTHOMPSONFOUNDATION**
DAVISTHOMPSONFOUNDATION

VOTE ON YOUR FAVORITE ON **OCT 18**
WINNER WILL BE ANNOUNCED **OCT 20**
WINNER WILL RECEIVE OUR NEW CANVAS TOTE



AWARDS CEREMONY



DAVIS-THOMPSON FOUNDATION

Award Ceremony

MONDAY OCT 27, 2025- 5:30 – 7:30 PM (CDT)

You're Invited!

Join us for a brand-new, fun-filled Davis-Thompson Foundation Award Ceremony at the 2025 ACVP Annual Meeting!

***This year we're shaking things up!
As you walk in, you'll get raffle tickets -
remember, you must be present to win prizes like:***

***A full fascicle set
Free course tuition
Free day seminar tuition***

The evening includes:

Quick welcomes and Foundation highlights

Recognition of our outstanding awardees

Three raffle prize drawings sprinkled throughout

Time to mingle, celebrate, and snap photos with the winners

Fast-paced, interactive, and more fun than ever—don't miss it!



NEW ORLEANS, LOUISIANA

JVDI IN FOCUS



The Official Journal of the
American Association of Veterinary Laboratory Diagnosticians



Our October focus is an article appearing in the November issue: “*Eurytrema* sp. as a cause of chronic interstitial pancreatitis in cattle in southeastern Brazil” by Guilherme S. Lemos, Rodrigo L. A. Palhano, Hudson A. Santos, João P. Matiello, Bárbara A. Alves, Gabriela Antevelli, Tiago F. Moreira, Rodrigo M. Meneses, Antônio U. Carvalho, Elias J. Facury Filho.

J Vet Diagn Invest 2025;37(6). <https://journals.sagepub.com/doi/abs/10.1177/10406387251345888>

We report here 6 cases of bovine eurytrematosis on 2 farms (dairy and beef cattle) in southeastern Brazil. The cattle had different primary lesions that explained their clinical conditions; however, upon autopsy, common to all animals were abnormalities in the pancreas and the presence of *Eurytrema* spp. All parasitized pancreases were swollen, firm, and tan to yellow-pink. Upon dissection, numerous parasites were observed, the pancreatic ducts were thickened and dilated, and the parenchyma was fibrotic. Histopathologic findings were multifocal-to-diffuse chronic interstitial pancreatitis. Despite clinical signs, such as low body condition score, compatible with eurytrematosis, it was challenging to determine whether these signs were caused primarily by the pancreatic lesion or by the primary disease affecting the cows. Bovine eurytrematosis may be associated with other underlying conditions, making its diagnosis difficult and potentially impacting the prognosis of the affected animals. Our findings underscore the harmful nature of *Eurytrema coelomaticum* as a parasite and emphasize that it may be more than an incidental finding at autopsy.

JVDI IN FOCUS

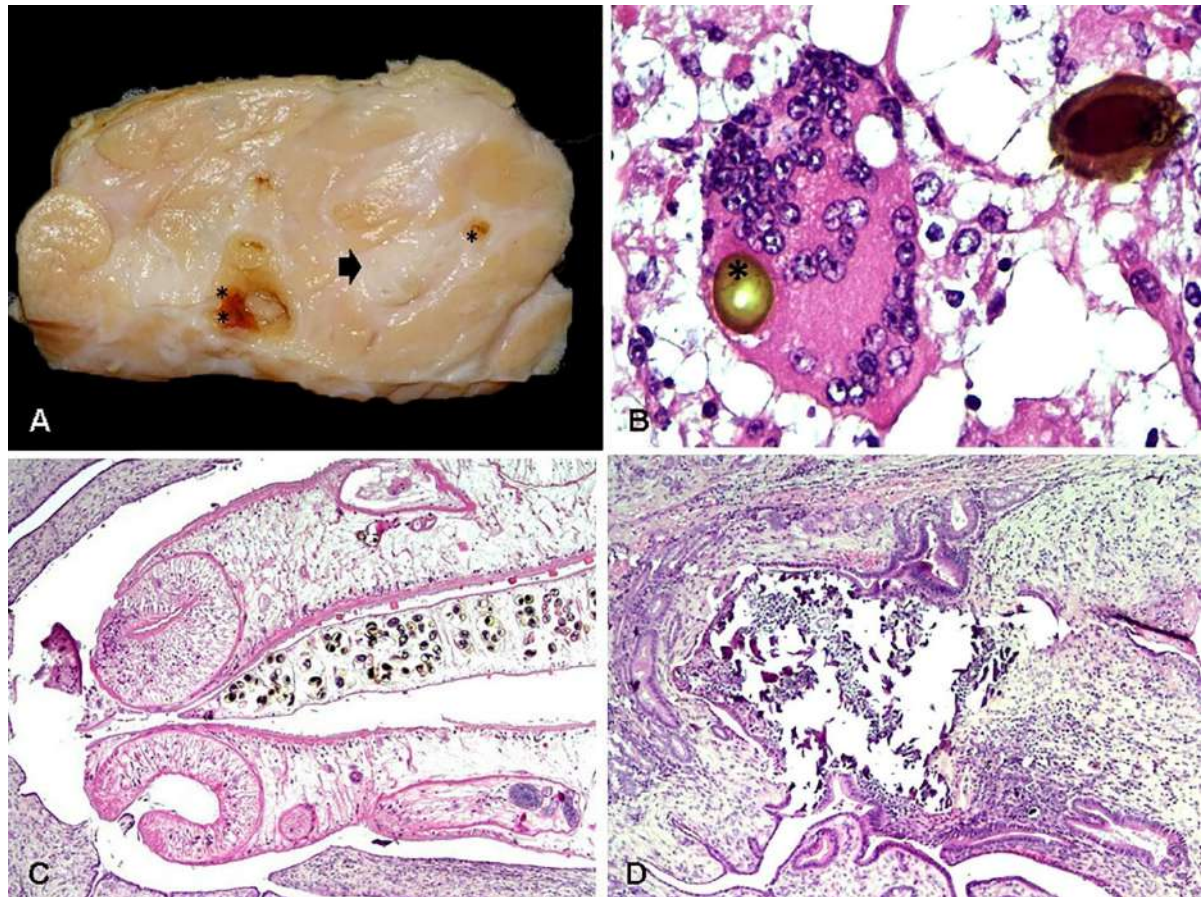


Figure 1. *Eurytrema* sp. as a cause of chronic interstitial pancreatitis in cattle. **A.** Cross-section of a pancreas with marked interstitial fibrosis. Note enlarged pancreatic ducts, fibrosis (arrow), and *Eurytrema coelomaticum* parasites (*); case 1. **B–D.** Histologic sections. H&E. **B.** Multinucleate giant cell with intracytoplasmic *E. coelomaticum* egg (*). **C.** Pancreatic duct containing *E. coelomaticum* flukes. **D.** Pancreatic duct ruptured with multifocal mineralization.



DIAGNOSTIC EXERCISE



Case #: 268; **Month:** September; **Year:** 2025

Contributors: Adriana L. Stigger^{1*}, Saulo P. Pavarini², Irene Guterra¹, Francine F., Pereira¹, Milena Carolina Paz², Emanoelly M. S. da Silva², Claudio S.L. Barros³, Daniel R. Rissi⁴

¹Laboratory of Veterinary Pathology, Centro Universitário da Região da Campanha (Urcamp), Alegrete, RS, Brazil

²Setor de Patologia Veterinária, Faculdade de Medicina Veterinária, Universidade Federal do Rio Grande do Sul (UFRGS), Porto Alegre, RS, Brazil.

³Laboratory of Anatomic Pathology, School of Veterinary Medicine and Animal Sciences, Federal University of Mato Grosso do Sul, Campo Grande, MS, Brazil.

⁴Athens Veterinary Diagnostic Laboratory, Department of Pathology, College of Veterinary Medicine, University of Georgia, Athens GA, USA

***Corresponding author:** adrianaluckestigger@gmail.com

Clinical history: Cases of neurologic disease occurred in a sheep farm in late 2023, with a surge in cases in July 2024. The disease affected lambs more frequently. Clinical signs lasted from 7 days to 1 month and included blindness, ataxia, lateral deviation of the head, circling, and reflux of ruminal contents through the nose. One animal had exophthalmos. There were several dogs on the farm. The total number of sheep on the farm was 100, 50 of which were in the group where the disease occurred. Six of those 50 had clinical signs and died. All sheep were free in the pasture.

Autopsy findings: A 2.5-year-old sheep was autopsied. A 5 cm in diameter cyst compressed the right cerebral hemisphere. The overlying membranous skull bone in this site was markedly thinned due to compression by the cyst (Fig. 1A). The cyst was formed by a thin transparent membrane and filled with clear fluid; there were numerous white protoscolices internally adhered to the cyst membrane (Fig. 1B). Due to the space-occupying effect of the cyst, there was flattening of the cerebral gyri and caudal displacement of part of the occipital lobe of the brain under the tentorial space and into the caudal fossa (subtentorial herniation), with consequent compression of the cerebellum (Fig. 2).



DIAGNOSTIC EXERCISE

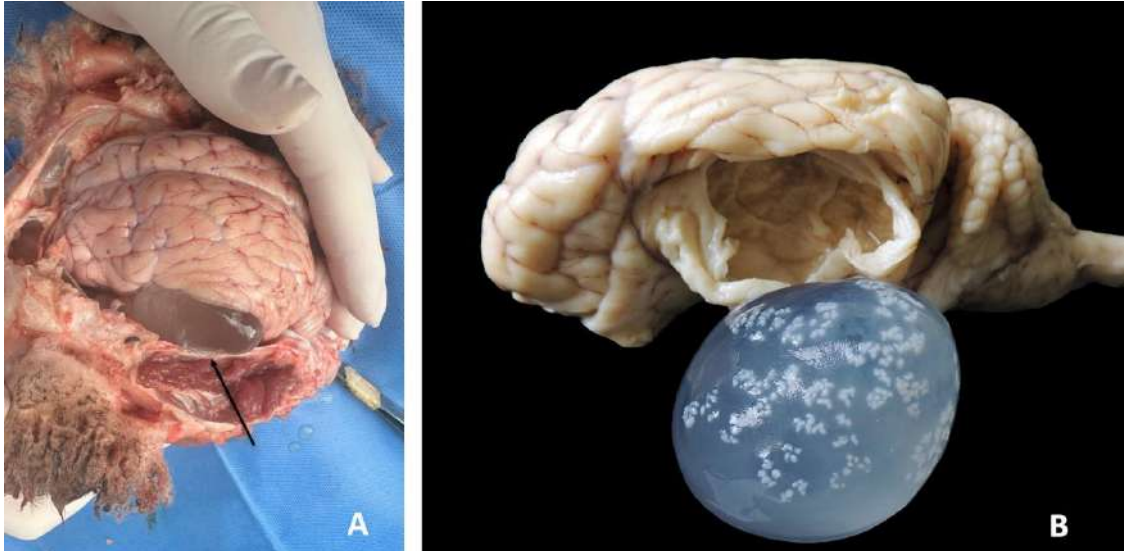


Figure 1

Follow-up questions:

- *Morphologic diagnosis*
- *Etiology*
- *Name of the condition*



Figure 2

[Click here for answers](#)

Associate Editor for this Diagnostic Exercise: Francisco Uzal
Editor-in-chief: Claudio Barros

*The Diagnostic Exercises are an initiative of the Latin Comparative Pathology Group (LCPG), the Latin American subdivision of The Davis-Thompson Foundation. These exercises are contributed by members and non-members from any country of residence. Consider submitting an exercise! A final document containing this material with answers and a brief discussion will be posted on the CL Davis website (<https://davisthompsonfoundation.org/diagnostic-exercise/>).

GHPN PHILIPPINES REVIEW



Philippines GHPN Workshop, August 26-29, 2025

by Drs. Corrie Brown, Nicolas Streitenberger and Kelsey Fiddes

VetALERT: Strengthening Diagnostic Competence in Pathology and Transferrable Veterinary Skills **ALERT = Advancing Livestock Enterprise and Resource Training Program for Veterinarians**

ALERT is a program devised by the Philippine Veterinary Association to provide Continuing Professional Development for veterinarians in animal health of livestock and poultry. The ALERT program was initiated by Dr. Gigi Venturina (University of the Philippines, Los Baños) and is now an annual program. This GHPN workshop was the second offering of a VetALERT. The program was attended by 30 academic faculty, representing 15 schools of veterinary medicine (there are 25 schools of veterinary medicine in the country), and 20 veterinarians from Local Government Unit Veterinarians, the regulatory veterinarians who are employed by the Bureau of Animal Industry. In addition, senior veterinary students joined the program when they were available. Dr. Corrie Brown (LifeStock International and UGA), Dr. Kelsey Fiddes (Joint Pathology Center), and Dr. Nicolas Streitenberger (UC Davis), along with the local host, Dr. Gigi Venturina, facilitated the workshop. Day 1 started with an introduction to the adult learning concepts. Then, scenarios on key avian diseases were discussed. In the afternoon, a chicken necropsy session was led by Dr. Mark Cueto (Philippine College of Poultry Practitioners). On Day 2, there were discussions on how to construct research projects, and on scientific writing and publication, followed by an interactive session on how to explain scientific concepts in lay terms. Later, scenarios on pig diseases were discussed, and there was a pig necropsy session led by Dr. Alex Peralta (Philippine College of Swine Practitioners). On

GHPN PHILIPPINES REVIEW

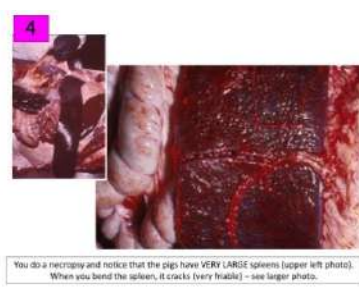
Day 3, Dr. Fiddes led a discussion on how to identify cells and key lesions on histopathology, and Dr. Streitenberger reviewed common gross lesions based on mechanisms of disease. The day continued with scenarios of diseases of ruminants, and a goat necropsy session led by Dr. Gerry Camer (University of the Eastern Philippines) and Dr. Alvin Soriano (CLSU). Finally, there was a closing ceremony where Dr. Venturina and other stakeholders provided some closing remarks. The participants really enjoyed the course and multiple people mentioned they were hoping that this training was the first of many in the Philippines!



Corrie explains Adult Learning Principles



Kelsey, Nico and participants during a necropsy session



- 6
- Please answer the following questions about this case:
1. What is the most likely cause of this problem?
 2. How does this agent cause disease (pathogenesis)?
 3. Why is the spleen so very large and friable?
 4. Morphologic diagnosis on the kidneys?
 5. Why is there hemorrhage at so many locations?
 6. What is the best method of control for this disease?



Disease scenarios



Participants discussing scenarios

BRAZILIAN SYMPOSIUM REVIEW

XVI Brazilian Symposium of the Davis-Thompson Foundation

by Dr. Renato de Lima Santos

The XVI Brazilian Symposium of the Davis-Thompson Foundation took place on September 11, 2025 and was a great success, based on strongly positive feedback we got. It took place in Cuiabá (State of Mato Grosso, Brazil) as part of the National Veterinary Pathology Meeting (ENAPAVE). Our invited speaker, Dr. Amy Durham, gave a 5-hour lecture on Hematopoietic Pathology with focus on diagnosis and classification of lymphomas before an audience of hundreds of students, residents, and pathologists, totaling 469 attendees from all regions of Brazil as well as some folks from other countries, including Paraguay, United States, France, and Chile. The meeting had the support of numerous organizing committee members including all officers of the Brazilian Association for Veterinary Pathology (ABPV) lead by Dr. Fernando Henrique Furlan (ABPV President and President of the ENAPAVE



2025) and Dr. Francisco de Assis Leite Souza (ABPV Scientific Director and Vice-President of the ENAPAVE 2025). This Symposium marked 20 years of intense activities of the DTF in Brazil since the first Brazilian Symposium of the (then) CL Davis Foundation in 2005, so we took a few minutes of the program to emphasize all activities and learning materials made available by the Davis-Thompson Foundation. We are now looking forward to the Davis-Thompson Foundation Roadshow, when we will have the privilege of welcoming Dr. Brian Murphy to São Paulo in November 20-21, 2025.

RACEHORSE WORKSHOP REVIEW

IV Annual Racehorse Necropsy Workshop of the Davis-Thompson Foundation/Horseracing Integrity and Safety Authority, Kentucky September 18-20, 2025

by Dr. Laura Kennedy

The fourth annual Racehorse Necropsy Workshop was held in Lexington, KY from the 18 through the 20 of September, 2025. The workshop brought together pathologists, pathology residents, diagnosticians, clinicians and racing regulatory veterinarians from around the US and Canada, and as far away as the United Kingdom, New Zealand, and Chile.

The organizers of the meeting were Laura Kennedy, Julie Engiles, Sue Stover, Karen Hassan and Francisco Uzal. An impressive list of world renown speakers included Laura Kennedy, Karen Hassan, Jennifer Durenberger, Mary Scollay, Francisco Uzal, Sian Durward-Akhurst, Bruno Menarim, Sue Stover, Julie Engiles, Will Farmer, Stuart Brown and Carlos Schild.



Visit to Keeneland

Support for the myriad activities of the workshop was provided by an incredibly efficient group of people from the University of Kentucky and other organizations who worked tirelessly behind the scenes. Thank you from the bottom of our hearts to Rafaela DeNegri, Sara Welsh, Eva Langlois, Amanda Burkhardt, Tristan Newsome, Marie Renner, Malena Hughes, Jenna Snapp, Katie Ralph, Nikki Kirtley and Meridith Rhea.

RACEHORSE WORKSHOP REVIEW

The program started with a Thursday morning reception at Keeneland Racecourse, where participants learned about the racing industry in Kentucky, and



"Hands on". L to R: Drs. Laura Kennedy, Julie Engiles, Megan Romano, Jolie Demchur.

safety initiatives from pre-race screening to enhanced emergency management for both the human and equine athletes. Didactic sessions began with an introduction to racing regulatory medicine and detailed the importance of the postmortem examination and how the findings are applied through the regulatory process. The afternoon concluded with an exploration of exercise-associated death from both a clinical cardiology perspective through the postmortem examination.

Friday morning began a crash course in musculoskeletal disease in racehorses. Closing out the didactic portion of the workshop was a case review session with the medical directors of Churchill Downs and Keeneland, demonstrating the close interactions and benefits to all parties when pathologists and regulatory veterinarians work closely together.



Dr. Carlos Schild providing a bone anatomy review



Dr. Francisco Uzal demonstrating humeral fractures

RACEHORSE WORKSHOP REVIEW

The highlight of the workshop, the Saturday morning wet lab, saw 20 eager pathologists/residents/diagnosticians paired with 12 racing regulatory veterinarians to solidify the knowledge and cement the partnerships developed over the previous two days. The morning began with a review of normal anatomy, a limb dissection demonstration, and a review of preserved specimens demonstrating common injuries and preexisting conditions of racehorses. Armed with this new knowledge, participants tackled individual dissection of limbs collected from racehorses with the assistance of regulatory veterinarians familiar with the clinical exam findings. To cap it off, participants reviewed the cardiac examination protocol through a dissection demonstration and then moved on to individual examination and dissection of horse hearts.



Drs. Will Farmer and Stuart Brown, medical directors of Churchill Downs and Keeneland, demonstrating the close interactions and benefits to all parties when pathologists and regulatory veterinarians work closely together



Dr. Laura Kennedy demonstrating fetlock failure lesions during the wet lab

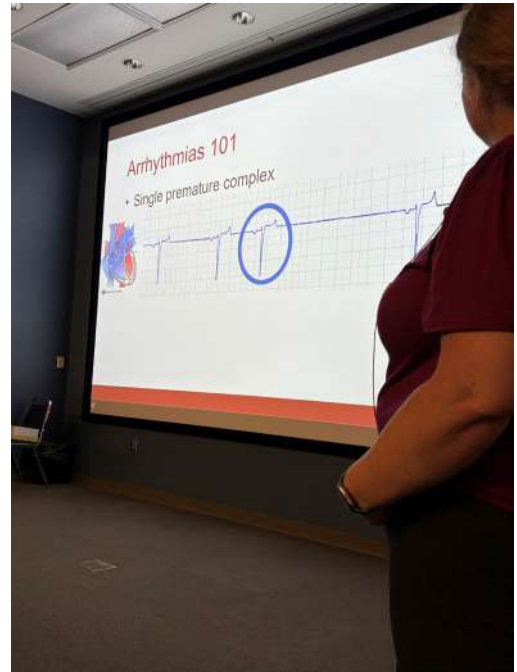


Group photo

RACEHORSE WORKSHOP REVIEW



The legendary Dr Sue Stover demonstrating pre-existing lesions in lye tank-processed bone specimens



Dr Sian Durward-Akhurst lecturing on equine arrhythmias



Participants of the wet lab dissecting distal horse legs

HPAI IN DAIRY CATTLE SEMINAR

Free-Friday Seminar
October 10, 2025
11 AM – 12:30 PM CDT



Davis-Thompson
Foundation

HPAI in Dairy Cattle Clinical Perspectives



Deniece Williams
DVM, MPVM DACVPM-Epi



FREE



Virtual

Registration required!



[Click here to register](#)

EASTERN EUROPEAN ROADSHOW

 Davis-Thompson Foundation



2025 EASTERN EUROPEAN ROADSHOW

 In-person
 50

ALIMENTARY DISEASES

Francisco Uzal
DVM, MSc, PhD, DACVP

October 7 – October 8
Budapest, Hungary
[Click here to register](#)

October 11 – October 12
Thessaloniki, Greece
[Click here to register](#)

October 15 – October 16
Krakow, Poland
[Click here to register](#)

HISTOPATOLOGY ROUNDS IN SPANISH



RONDAS DE
HISTOPATOLOGÍA DE LCPG



Davis-Thompson
Foundation

CASOS VARIADOS

Jueves 16 de Octubre 2025

10:30 AM - 11:30 AM CT



Melissa Macias

DVM, MPVM, PhD, DACVP

[Click here to register](#)

SEMINAR SERIES IN PORTUGUESE



The poster features a dark teal background with orange and light teal geometric shapes and splatters. In the top left, there is a shield logo with a caduceus and the text 'Davis-Thompson Foundation', a blue map of Brazil with 'JOCAG' written vertically, and a circular logo for 'Associação Brasileira de Patologia Veterinária' with a caduceus. The main title 'Seminar Series in Portuguese' is in large orange letters, followed by the date '23 de outubro, 2025' and time '12:00-13:00 (UTC-03:00; BRT)' in orange. A circular portrait of a man in a blue shirt is on the left. The topic 'DERMATO PATOLOGIA VETERINÁRIA' is in large white letters, and the speaker's name 'Roberio Gomes Olinda DVM, MSc, PhD' is in white on a dark teal background. At the bottom right is a circular illustration of a skin cross-section showing a hair follicle, sebaceous gland, and blood vessels.

**Seminar Series
in Portuguese**

23 de outubro, 2025
12:00-13:00 (UTC-03:00; BRT)

**DERMATO
PATOLOGIA
VETERINÁRIA**

Roberio Gomes Olinda
DVM, MSc, PhD

[Click here to register](#)

ACVP PRE-MEETING WORKSHOP

OCTOBER 25, 2025

**BRAIN INVADERS:
TUMORS OF THE NERVOUS
SYSTEM**

Jey Koehler
DVM, PhD, DACVP

Daniel Rissi
DVM, PhD, DACVP

Andrew Miller
DVM, DACVP

Elena Demeter
DVM, PhD, DACVP

Brian Porter
DVM, DACVP

✓ 6.5hrs RACE,
Pending

\$ \$75-375

👽 In person

NEW ORLEANS

[Click here to register](#)

AAVLD PRE-MEETING WORKSHOP



AAVLD PRE-MEETING WORKSHOP 2025

CYTOLOGY FOR ANATOMIC PATHOLOGISTS



Melanie Ammersbach
DVM, DACVP (clinical)



Alex Mau
DVM, DACVP (clinical)



Patricia Pesavento
DVM, PhD, DACVP (anatomic)



Date: **October 31, 2025**



Time: **8:00am - 5:00pm**



pending Approval



Gaylord Rockies Resort & Convention Center, Aurora, Colorado

[Click here to register](#)

FELINE AND EQUINE DERMATOPATHOLOGY



Davis-Thompson
Foundation

Full Day Seminar
November 11, 2025
9:00 - 4:30 CST

FURS AND SPURS: A ROUNDUP OF FELINE AND EQUINE DERMATOPATHOLOGY



Karen Trainor
DVM, MS, DACVP



Verena Affolter
Dr. med. vet,
PhD, DECV



virtual



75 dollars



pending
approval

More information
coming soon

DISEASES OF LABORATORY ANIMALS



Davis-Thompson
Foundation

Full day seminar

Tuesday, Nov 18, 2025
9:00 am - 4:00 pm (CST)

Diseases of Laboratory Animals



Kerriann Casey

DVM, DACVP



Pedro Ruivo

DVM, MS, DACVP



Javier Asin

DVM, PhD, DECVP



Stephen Barthold

DVM, PhD, DACVP



Virtual



75 dollars



pending approval

[Click here to register](#)

SCOPE 2025

SAVE THE DATE



NOVEMBER 20- 21



IN-PERSON
LIMITED TO 30



MANDAI SINGAPORE ZOO



Davis-Thompson
Foundation



Cornell
K. Lisa Yang Center
for Wildlife Health



Mandai
WILDLIFE GROUP



MARIO EINAUDI
Center for
International
Studies

[Click here to register](#)

WESTERN ROUND ROBIN CASE

CONTRIBUTING LABORATORY:

**Oregon National Primate Research Center
Oregon Health and Science University**

Signalment and history:

36-day old male rhesus macaque presented with dam for ill appearance; 1/5 body condition score, and severe dehydration.

Clinical pathology (on point of care instrumentation):

Metabolic acidosis (pH 7.042, pCO₂ 26.1, HCO₃ 7.1)

Hyponatremia (Na 116)

Hyperkalemia (K 6.5)

Hypochloremia (Cl 101)

Hemoconcentration (Hct 48, Hgb 16.4)

Hypoglycemia (Gluc 28)

Azotemia (BUN >120), elevated creatinine (Creatinine 7.95)

Gross Findings:

Both kidneys are enlarged and edematous. The subcapsular cortical surface is blotchy yellow-tan to off-white; on sectioned surface, pale tan streaks radiate from the medulla with additional pinpoint pale foci scattered throughout. The ureters are bilaterally thickened. The urinary bladder contains ~0.1 mL of urine; the cystic mucosa is diffusely thickened and mildly reddened.

Histology:

Radiating from the renal pelvis and extending through the cortex, are dense infiltrates of neutrophils and fewer macrophages which expand and efface the renal interstitium. The renal pelvic mucosa is disrupted, markedly infiltrated with neutrophils, and multifocally absent. The underlying submucosa is densely infiltrated with neutrophils and lymphocytes with moderate hemorrhage and edema. In many areas, plaques of Gram negative bacterial rods line the superficial urothelium. The renal interstitium is expanded by edema and high numbers of neutrophils and fewer lymphocytes admixed with immature fibroblasts. Tubules are distended with neutrophils and necrotic cellular debris. Remaining tubules are dilated and lined by highly vacuolated, degenerating and necrotic epithelium.

WESTERN ROUND ROBIN CASE

Diagnosis: Pyelonephritis, suppurative, subacute, severe with necrosis of renal pelvis and bacterial colonization

Ancillary testing: Aerobic culture of kidneys yielded 3+ *E. coli* and 3+ *Staph. aureus*

Comments:

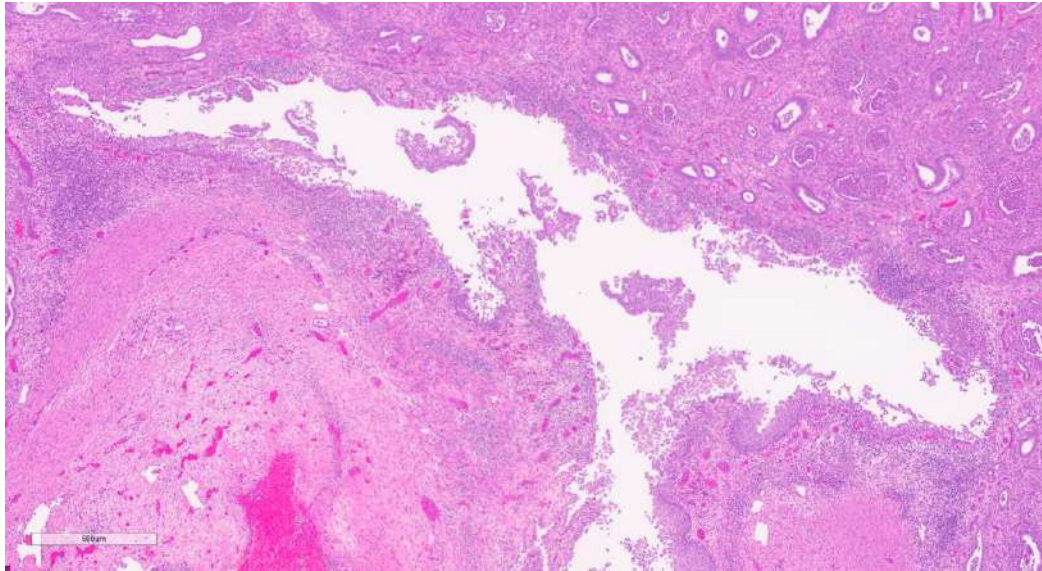
This is a case of juvenile bacterial pyelonephritis with features typical of uropathogenic *E. coli* (UPEC) infection. In addition to pyelonephritis, there was suppurative ureteritis with intraepithelial microabscesses and marked urothelial bacterial colonization, and chronic-active cystitis. Additionally, there was marked thymic depletion, mild subacute typhlocolitis and marked ileal cryptosporidiosis consistent with immunocompromise in a systemically ill infant macaque. Pyelonephritis in macaques is uncommon. Pyelonephritis in children is a serious bacterial illness. 80% of cases are caused by UPEC. Common predisposing factors in the host are related to anatomic and functional abnormalities of urinary tract. UPEC virulence factors include Adhesins (type 1 and type P fimbriae), flagellar motility, toxins (hemolysin, cytotoxic necrotizing factor), mechanisms of iron acquisition, ability to form intracellular bacterial communities, and factors of immune evasion such as iron sequestration and biofilm formation. No structural urogenital abnormalities were identified in this case. Functional abnormalities can not be ruled out.



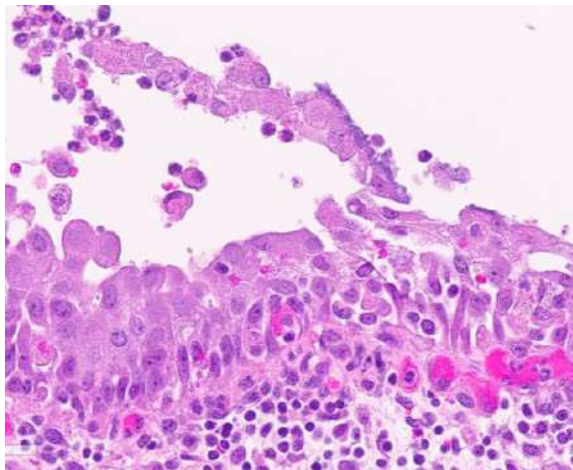
Left: Kidneys. Bilateral pyelonephritis, rhesus macaque.

Right: Kidney. Subgross of kidney demonstrating diffuse involvement with streaks radiating from the pelvis

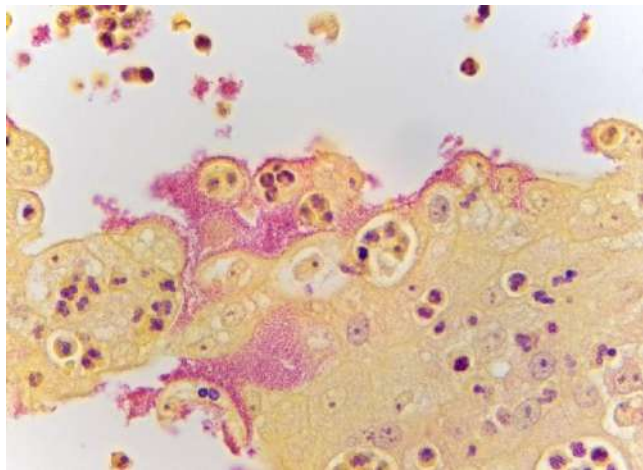
WESTERN ROUND ROBIN CASE



Renal pelvis. Necrosuppurative pyelitis



Left. Pelvic urothelium diffusely colonized by bacteria



Right. Gram stain Urothelium is colonized by Gram negative bacilli

[Click here to see the slide in Noah's slidebox](#)

Contributor:

Anne Lewis, DVM, PhD, DACVP

ASVP CORNER

2025 ASVP & DTF SCIENTIFIC CONFERENCE

THE HAEMATOLYMPHOID SYSTEM



**DOROTHEE
BIENZLE**

Keynote Speaker
Professor Emeritus
Guelph University



**CLAIRE
CANNON**

Invited Speaker
Specialist Oncologist
The University of Melbourne



**GARY
LEE**

Invited Speaker
Clinical & Anatomic Pathologist
IDEXX Laboratories



**JOHN
MACKIE**

Invited Speaker
Specialist Pathologist
QML Vetnostics



**PHILLIP
CARTER**

Invited Speaker
District Vet
Local Land Services North Coast

REGISTER NOW

17-19 OCTOBER, 2025

RYDGES SOUTHBANK
TOWNSVILLE, QLD

www.asvp.asn.au/2025conference

ASVP
Australian Society for
Veterinary Pathology



Davis-Thompson
Foundation

IDEXX CASECONNEXX CORNER

Signalment: 3-year-old, male, neutered Nubian X goat

Source/ History: 3-month history of progressive non-pruritic dermal nodules all over body. Up to 1.5 cm in diameter. Patient is otherwise doing well. Lives with 7 other pet goats, no other goats affected. Caseous material able to be expressed from nodules.

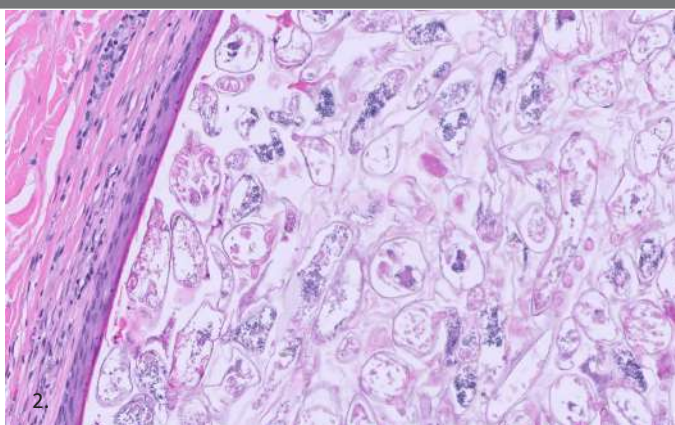


Figure 1. Hair follicle infundibulum is markedly distended by innumerable arthropod mites. **Figure 2.** The mites are 50 μ m wide, up to 230 μ m long, and have a thin chitinous exoskeleton, short jointed appendages, striated muscle, and gastrointestinal and reproductive tracts.

Histopathologic Description:

Haired skin: The dermal nodule consists of a hair follicle infundibulum that is lined by flattened stratified squamous epithelium and markedly distended by innumerable arthropod mites. The mites are up to 230 μ m long and 50 μ m wide with a thin chitinous exoskeleton, short jointed appendages, striated muscle and reproductive and gastrointestinal tracts containing granular basophilic and flocculent eosinophilic material, respectively. There is a mild perivascular infiltrate of lymphocytes and plasma cells in the surrounding dermis.

Interpretation:

Haired skin: Marked follicular dilation by innumerable arthropod mites, consistent with caprine demodicosis / demodectic mange

Comments:

Histopathology of this dermal nodule reveals that it consists of a hair follicle which is markedly distended by large numbers of *Demodex* spp. mites. Demodicosis / demodectic mange in goats is caused by *Demodex caprae*. The typical clinical findings are multifocal cutaneous papules or nodules that can range in number from a few to several hundred. Unlike the typical histologic findings of demodectic mange in dogs, which can present with prominent inflammatory disease (e.g. neutrophilic folliculitis, perifollicular pyogranulomas, furunculosis), the histopathology of demodicosis in goats (and cattle) is typically characterized by marked follicular distension by abundant mites with only a relatively scant mononuclear inflammatory response in the surrounding connective tissues. The preferred sites for caprine demodectic mange include the shoulders, neck, ventral chest, and muzzle, but lesions may be present over the entire body in heavy infestations. The lesions are neither painful nor pruritic, and there may be a seasonal increase in the number of lesions in spring and summer.

References:

Maudlin EA, Peters-Kennedy J. Integumentary system. In: Maxie MG, ed. Jubb, Kennedy, and Palmer's Pathology of Domestic Animals. Vol 1. 6th ed. Philadelphia, PA: Elsevier Saunders; 2016: 678-682.

Case by
Luke Haydock, BVSc (Dist.), DVSc, DACVP

IDEXX

CaseConnexx

Visit CaseConnexx.com to Register

BSTP CORNER

BRITISH SOCIETY OF TOXICOLOGICAL PATHOLOGY

Notice of Future Meetings

Virtual Continuing Education Symposium 12: Cardiovascular System

1st – 10th July 2025

Tuesday, Wednesday and Thursday

13.00 – 17.00 (GMT+1, London/UCT+1)



CES 12 will be held over two weeks – on the afternoons of Tuesday 1st, Wednesday 2nd, Thursday 3rd, Tuesday 8th, Wednesday 9th and Thursday 10th July 2025, from 13.00 – 17.00 (GMT+1, London/UCT+1) each day.

Approved by the Royal Society of Biology for the purposes of CPD, this event may be counted as approximately 63 credits. Approximately 21 hours of educational activity will be recorded on Attendance Certificates.

BSTP CES 12: Cardiovascular System - REGISTRATION IS NOW OPEN!

Exciting News! One of the six afternoons of CES 12 will be entirely dedicated to Clinical Pathology, and the BSTP is offering a single-day registration for this specific day. Wednesday 9th July 2025 is perfect for colleagues interested in clinical pathology who prefer not to attend the full symposium. Join us for a day of focused clinical pathology learning delivered by Dr Laura Boone! Attendance to the clinical pathology day is, of course, included in the full symposium registration.

Reduced rates for early career pathologists and free place bursaries are available.

For more information or to register visit: <https://www.bstp.org.uk/events/ces-12-cardiovascular-system/>

If you have any queries, please contact the event organiser: Hg3 Conferences Ltd – events@hg3.co.uk

2nd Joint Congress of the BSTP and ESTP

Manchester, UK

23rd – 26th September 2025

The British Society of Toxicologic Pathology (BSTP) and the European Society of Toxicologic Pathology (ESTP) are pleased to invite you to the 2nd Joint ESTP/BSTP Toxicologic Pathology Congress entitled 'Carcinogenicity in the 21st Century; challenges of new methodologies, strategies, and their impact on pathologists'.

REGISTRATION IS NOW OPEN - Take advantage of the Early Bird Fee and register before 23rd June 2025!

The program will include new methodologies and alternatives for the assessment of carcinogenicity testing of agrochemical and pharmaceuticals, predicting carcinogenetic potential of compounds at early stages, carcinogenicity assessment of new modality drugs, risk assessment and human relevance of neoplastic and non-neoplastic findings in carcinogenicity studies, and guidelines through plenary lectures, oral presentations of original scientific work, interactive case presentations, and poster session.

In conjunction, an IATP symposium and ESTP expert workshop (Female Reproductive System) will take place immediately before and after the congress, respectively.

The social program will include the welcome reception (23rd September 2025) and congress dinner (25th September 2025). **During this event help us celebrate the 40th anniversary of the BSTP – 1985 – 2025!**

To register and for up-to-date information keep checking – <https://www.bstp.org.uk/events/2nd-joint-congress-of-the-bstp-and-estp/> or https://www.esvp-ecvp-estp-congress.eu/estp_congress

If you have any queries, please contact the congress secretariat: Partners in Congress Organisation – m.kostons@pcopartners.nl

BSTP CORNER

BSTP Webinars

Registration to take part in BSTP webinars is free with the login details provided at least one week prior to the date of the webinar.

STP/BSTP Webinars: Dates for webinars in 2025 will be available in due course.

IATP/BSTP Webinar: Dates for webinars in 2025 will be available in due course.

ESTP/SFPT/BSTP and ECVP/ESVP* Webinars: *Sponsored by the ESTP, SFTP, BSTP and NVT: Dates for webinars in 2025 will be available in due course.

Keep checking the BSTP website for up to date information - [BSTP website](#) and also the [group LinkedIn page](#)

Non-BSTP Events

If you are interested in attending any events organised by other organisations visit –

<https://www.bstp.org.uk/non-bstp-events/>

If you would like details of any other events including on the BSTP website or publicising in the next 'Diary Dates' email, please send the information to the BSTP Secretariat – bstpsecretariat@gmail.com

Future BSTP events are due to take place as follows:

1st – 10th July 2025

CES 12 - Cardiovascular System

23rd – 26th September 2025

2nd Joint Congress of the BSTP and ESTP

November 2025

40th Annual General Meeting

March 2026

CES 13 - Lymphoid & Haematopoietic Systems

July 2026

CES 14 - Musculoskeletal System & Skin

November 2026

41st Annual Scientific Meeting & Annual General Meeting

The order of the CES will depend on the availability of high-quality speakers who are world experts in their particular field to present at the relevant meeting. Details of future meetings are correct at the time this booklet is generated, the BSTP will not be held responsible for any changes to dates, topics and venues of these meetings.

For up-to-date information on any events organised by the BSTP, please check the website –

<https://www.bstp.org.uk/bstp-events/> or <https://www.bstp.org.uk/events/bstp-webinars-and-podcasts/>

BSTP Contact Details

BSTP | PO Box 819 | Harrogate HG1 9XF | North Yorkshire | UK

Tel: 07894 123 533

Email: bstpsecretariat@gmail.com

Website: <https://www.bstp.org.uk>

LinkedIn: [British Society of Toxicological Pathology](#)

Registered Charity No: 1043793

BSVP CORNER



15 & 16.11.2025

Autumn Conference

**From Androgens To Trophoblasts:
Current Perspectives On Reproductive
& Mammary Gland Pathology**

 **British Society of Veterinary Pathology**
Advancing Education in Veterinary Pathology

 **The University of Nottingham**

Saturday, November 15		
Time	Speaker	Title
8:30-9:00	Organizers	Registration + Tea/Coffee
9:00-9:10	Organizers	Introduction, housekeeping
9:10-10:10	Rob Foster	Embryology and disorders of sexual development
10:10-10:40	Tea/Coffee Break	
10:40-11:40	Richard Lea	Environmental pollutant effects on mammalian fertility and reproductive health
11:45-12:45	Rob Foster	Gonadal neoplasia
12:45-14:00	Lunch Break	
14:00-15:00	Rob Foster	TBD*
15:05-16:05	Rob Foster	TBD*
16:05-16:35	Tea/Coffee Break	
16:35-17:35	Melissa Macías-Rioseco (virtual)	Bovine abortions

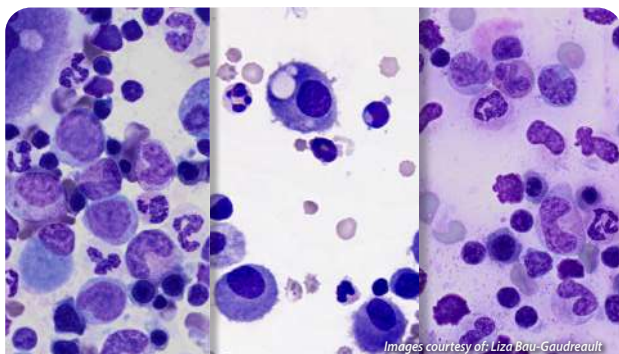
*Topics open for participant requests!

Sunday, November 16		
Time	Speaker	Title
9:00-10:00	AGM	
10:00-10:20	Tea/Coffee Break	
10:20-11:20	Kate Hughes	A comparative exploration of the mammary microenvironment
11:25-11:55	Kate Hughes	Species diversity in biology and pathology of the male mammary gland
12:00-12:45	Bursary winner presentations (3 winners, 10 minute presentations MAX + 5 minutes for questions)	
12:45-13:45	Lunch break and GreenLab winners	
13:45-14:15	Matt Smalley	Using mouse models to determine the cellular and genetic drivers of mammary tumour histological heterogeneity
14:20-15:20	Laura Peña	Diagnostic approach to mammary tumours
15:20-15:35	Tea/Coffee Break	
15:35-16:30	Laura Peña	Inflammatory mammary carcinomas

STP CORNER



Society of Toxicologic Pathology



Images courtesy of Liza Bau-Gaudreault

October 13–29, 2025
(Mondays and Wednesdays, 10:00 AM–1:45 PM EDT)

STP Virtual Modular Education Course: Fundamentals and Applications of Clinical Pathology in Nonclinical Toxicology Studies

Course Objective

The objective of the STP Modular Education Course “Fundamentals and Applications of Clinical Pathology in Nonclinical Toxicology Studies” is to educate individuals in the principles of clinical pathology in the context of toxicologic research. Attendees will gain a deeper understanding of basic and advanced clinical pathology methods, including hematology and clinical chemistry, coagulation, urinalysis, serum and fluid biomarkers, and cytology. Special emphasis will be placed on strategic design of clinical pathology endpoints and the integration of clinical pathology with adversity determinations and holistic animal data.

Course Description

The course will be a mixture of didactic lectures and case studies. Topics covered include:

- Best practices for clinical pathology endpoint design in nonclinical studies
- Standard, advanced, and emerging hematology and clinical chemistry assays and biomarkers
- Important considerations in clinical pathology reporting and adversity determination
- Case studies demonstrating holistic animal data integration
- Plus, many more!

Who Should Attend

The STP Modular Education courses are designed with the novice toxicologic pathologist in mind; however, pathology residents/graduate students with an interest in toxicologic pathology or experienced pathologists who desire a more in-depth review of clinical pathology will also benefit from the course. Additionally, this course will be of interest to toxicologists, PK/PD scientists, regulatory personnel, and anyone involved in nonclinical safety studies.

Questions and Special Accommodations

For any questions, please contact STP Headquarters at stp@toxpath.org.

REGISTRATION OPEN

For more course information and registration, visit www.toxpath.org

Faculty

- **Course Chair:**
Dharani K. Ajithdoss, BVSc, MVSc, PhD, DACVP, DACVM (Regeneron)
- **Course Co-Chair:**
Katherine A.B. Knostman, BS, DVM, PhD, DACVP (Battelle Memorial Institute)
- **Course Scientific Advisor:**
Kirstin Barnhart, DVM, PhD, DACVP (MBrace Therapeutics)
- **Course Scientific Advisor:**
Liza Bau-Gaudreault, DVM, MSc, DES, DACVP (Charles River Laboratories)
- **Course Scientific Advisor:**
Nancy Eversd, DVM, DACVP (ABB Consulting LLC)
- **Course Scientific Advisor:**
Armando Irizarry, DVM, PhD, DACVP (Eli Lilly and Company)
- Adayemi Adedeji, DVM, PhD, DACVP, Genentech
- Lennart Anger, ERT, Genentech
- Tara Arndt, DVM, DACVP, Altasciences
- Adam Aulbach, DVM, DACVP, Inoviv
- Laura Boone, DVM, PhD, DACVP, DABT, Labcorp Drug Development
- Marjory Brooks, DVM, DACVIM, Cornell University-College of Veterinary Medicine
- Michelle Cora, DVM, DACVP, NIEHS/DTT
- Laura Cregar, DVM, DACVP, Moderna
- Martin Guillot, PhD, Charles River Laboratories
- Natalie Hoepp, DVM, MS, DACVP, Merck & Co.
- Agata Miller, DVM, DACVP, AbbVie
- Samuel Neal, BS, The Ohio State University
- Florence Poitout, DVM, DACVP, DECVP, Charles River Laboratories
- Klaudia Polak, VMD, MS, DACVP, Labcorp
- Anne Provencher, DVM, MSc, DACVP, DECVP, FIATP, Charles River Laboratories
- Lila Ramaiah, DVM, PhD, DACVP, Johnson & Johnson Innovative Medicine
- Eric Schultze, DVM, PhD, DACVP, FIATP, Eli Lilly and Company
- Cory Sims, DVM, DACVP, Altasciences
- Craig Thompson, DVM, DACVP, Purdue University College of Veterinary Medicine
- Niraj Tripathi, BVSc, MVSc, PhD, DACVP, Covance Laboratories, Inc.

Course Registration

STP Member	\$795.00
Nonmember	\$995.00
Student*	\$95.00
STP Member Group Rate [§]	\$695.00
Nonmember Group Rate [§]	\$895.00

*A letter of verification from a department chair must accompany student registration.

§Three or more from the same company.

Cancellation Policy

A written request for cancellation must be received by STP Headquarters no later than September 15, 2025. The registration fee will be refunded less a \$50 processing fee. No refunds will be issued after September 15, 2025. STP reserves the right to cancel the course, in which case all registrants will receive a full refund.

Virtual Attendance

Presentations will be offered virtually from 10:00 AM–1:45 PM EDT on Mondays and Wednesdays.

Access to the downloadable course materials and Zoom login information for the live sessions will be provided in advance.

Course presentations will be recorded and made available to registrants for 30 days.

LCPG CORNER

CALENDAR OF ACTIVITIES IN LATINAMERICA

Country	City	Event	Speaker	Subject	Date	Organizer
Argentina	Córdoba	XIV Reunión Argentina de Patología Veterinaria	Don Meuten, Verena Affolter, Claudio Barbeito, Juan Micheloud, Francisco Uzal, others.	Multiple	Sept 24-26	Renata Brizzio
Brazil	Cuiabá (Mato Grosso)	ENAPAVE	Amy Durham	Hematopoietic pathology	Sept 9-15	Renato de Lima Santos
	Sao Paulo	IV Annual Latin American Roadshow	Brian Murphy	Oral and skeletal pathology	Nov 20-21	Renee Amorim
Chile	Santiago	IV Annual Latin American Roadshow	Brian Murphy	Oral and skeletal pathology	Nov 17-18	Federico Cifuentes
Colombia	Caldas	Seminario-Taller Colombiano	Raquel Rech, Henry Benavidez	Neuropathology	Oct 14-15	Paola Barato
Costa Rica	San José	Curso Patología Forense	Carlos González	Forensic pathology	Aug 26-30	Juan Diego Hidalgo
Ecuador	Quito	I Ecuatorian Seminar	Francisco A Uzal, Francisco R Carvalho	Digestive and respiratory pathology	Dec 8-9	Francisco Cabrera
Guatemala	Ciudad de Guatemala	V Guatemalan Seminar	Javier Asin, Melissa Macías	Gross pathology of ruminants	July 27-31	Deborah Rodríguez
México	Mexico city	IV Annual Latin American Roadshow	Brian Murphy	Oral and skeletal pathology	Nov 24-25	Itzel Yañez
	On line	5th Necropsy Course	Laura Romero, Rubén López, Francisco Carvalho, María del Carmen Carmona, Alfredo Pérez, Diana Galván, Mario Bedolla, Luis García, Elizabeth Rodríguez, Mireya Juárez, Vicente Ávila, Carlos González, Elizabeth Morales, Félix Sánchez	Gross lesions in animals	Apr 20 - May 14	Rubén López
Nicaragua	Managua	Global Health Pathology Network + III meeting of the Nicaraguan division	Javier Asin, Melissa Macías, Francisco Carvalho	Multiple	Jul 27-31	Cristina Toledo
Perú	Lima	TBD	TBD	TBD	TBD	Omar Gonzales Viera
Uruguay	Montevideo	11th Meeting of the Uruguayan Division	Marti Pumarola, Fabiano Sant'Ana	Veterinary Neuropathology	Feb 23-24	Jose Manuel Verdes
Venezuela	Barquisimeto	III Annual Meeting of the Venezuelan Division	Santiago Teyssandier, Rebeca Reyes, Pablo Manzuc, Javier Dlujnewsky, Antonio Rodríguez Bertós	Dermatopathology of dogs and cats	Nov 21-22	Yaritza Salas

LCPG CORNER

Workshop of basic necropsy in wildlife CL Davis – SW Thompson Foundation and Latin Comparative Pathology Group September 2 – 4, 2025; Montevideo – Uruguay

by José Manuel Verdes

The “*Taller Introductorio de Necropsia en Fauna Silvestre: metodologías para estudios patológicos*” (**Workshop of basic necropsy in wildlife**) was held at the Veterinary School of Universidad de la República (FVET-Udelar), Montevideo, Uruguay. The workshop was organized by faculty of the Department of Pathology, FVET-Udelar, and sponsored by the CL Davis-SW Thompson Foundation and the Latin Comparative Pathology Group. The Organizing Committee was composed of Drs. Elizabeth Chang-Reissig (IFAB, Instituto Nacional de Tecnología Agropecuaria INTA-CONICET, EEA INTA Bariloche, Argentina), Diana Szteren (Sciences School of Universidad de la República (FCIEN-Udelar), Emilia Rossini and José Manuel Verdes (FVET-Udelar). The workshop was attended by an enthusiastic group of more than 25 participants, including park rangers, pathologists, veterinary practitioners, scientists, undergraduate and postgraduate students from several public and private Uruguayan institutions. This workshop received financial support from the FVET-Udelar.



L: Participants and speakers of Workshop of basic necropsy in wildlife.

R: The Organizing Committee of the Workshop of basic necropsy in wildlife. From left to right, Emilia Rossini and José Manuel Verdes (FVET-Udelar, Uruguay), Diana Szteren (FCIEN-Udelar, Uruguay), Elizabeth Chang-Reissig (INTA Bariloche, Argentina) and two speakers, Dr. Virginia Russi (Ministerio de Ganadería, Agricultura y Pesca, MGAP, Uruguay) and Dr. Valeria Uriarte (Ministerio de Ambiente, Uruguay).

LCPG CORNER

Intensive Course in Veterinary Forensic Pathology – Costa Rica 2025

by Juan Diego Hidalgo

The Intensive Course in Veterinary Forensic Pathology was held on August 29–30, 2025, at the School of Veterinary Medicine and Surgery San Francisco de Asís in San José, Costa Rica. This pioneering event in the region brought together 30 participants, including 9 veterinary students and 21 veterinary graduates from Costa Rica, Chile, Panama, Mexico, and Guatemala.

The course was led by Dr. Carlos M. González Riveros (Universidad Andrés Bello, Chile), who delivered a structured program of eight theoretical modules and two practical workshops. Topics included the evolution of veterinary forensic pathology, crime scene management and evidence collection, lesionology and thanatology, cases of electrocution, fires, poisoning, and asphyxia, as well as forensic documentation and preparation of necropsy reports for court.

The afternoons were dedicated to hands-on training, with the analysis of trauma cases and a full forensic case simulation, from scene inspection to report writing. This format provided participants with practical experience and fostered critical discussion of approaches applicable to real forensic work.

The presence of Dr. González was made possible thanks to the Speaker Travel Award from the Latin Comparative Pathology Group (LCPG), with institutional support from the Davies-Thompson Foundation, Universidad Andrés Bello (Chile), and Humane World for Animals.



Dr. Gonzalez lecturing



Group photo of participants

LCPG CORNER

XIV Argentinean Meeting of Veterinary Pathology (RAPAVE) and 19th Annual Davis-Thompson Foundation Seminar, Córdoba, Argentina, 23-26 September 2025

by Dr Renata Brizzio

The XIV Argentinean Meeting of Veterinary Pathology, was held jointly with the 19th Annual Davis-Thompson Foundation (DTF) Seminar, in Córdoba, Argentina, from September 23 to 26, 2025. The event was attended by approximately 120 participants, including veterinarians, veterinary students, clinical pathologists, pathologists, oncologists, fellows, and collaborators. The members of the Organizing Committee were Drs. Renta Brizzio (Chair), Ana Martín, Alejandro Rodriguez, Lucas Ortiz Páramo, Roger Pijuan, Victoria Dellafiore, Giuliana Fabra, Paula Sauchelli, Leila Dujé and Cecilia DeGiovanni. This group had the collaboration of a Scientific Committee, which included Nicolás Litterio, Martín Himelfarb, Juan Pablo Vico and Pilar Zarazaga. A numerous and enthusiast group of students volunteered for myriad activities. Financial support for the meeting was provided by the DTF, the Latin Comparative Pathology Group, Laboratorio Patologia Animal-Cordoba and Francisco Uzal.



Audiende listening to Dr Meuten presentation (Paco Uzal translating into Spanish)



Some of the presenters and organizers, from left to right: Barbara McMahill, Verena Affolter, Ana Martin, Donald Meuten, Renata Brizzio, Leo Minatel

LCPG CORNER

The scientific program featured internationally renowned speakers. Dr. Don Meuten, recognized worldwide for his reference textbook on veterinary tumors, delivered lectures on recent advances in pathology and oncology. He highlighted the importance of cytology-histopathology correlations for diagnosis and the need to standardize pathology reports. Dr Meuten also participated in a roundtable discussion with Drs. Matías Tellado and Leonardo Minatel on the relevance of report standardization. Dr. Verena Affolter, co-author of the leading textbook in dermatopathology, presented on the diagnosis of histiocytic neoplasms, alopecic disorders, and autoimmune skin diseases, and outlined their diagnostic challenges. Dr. Barbara McMahon, a dermatopathologist who graduated at UC Davis under Dr. Affolter and Dr. Thelma Lee supervision, presented selected dermatopathology cases. Poster and oral presentation sessions where the attendees presented case reports of high quality that were received with great interest.

As it is already traditional for the RAPAVE, Drs. Renata Brizzio and Francisco (Paco) Uzal (CEO of the Davis-Thompson Foundation), conducted a histopathology workshop based on 16 cases previously submitted by the participants and scanned into Noah's Slide Box. A pre-congress workshop on scientific writing was presented by Drs. Claudio Barbeito, Juan Micheloud, and Paco Uzal.

The meeting was a great success and it highlights the enormous progress that the Argentinean veterinary pathology has made over the past few years. Congratulations everyone!



Group photo of participants

LCPG CORNER



Davis-Thompson
Foundation

Seminar Series in Spanish 2025



Seminarios en español 11:00am-12:30pm CDT



MARZO

COMPLETED

Intoxicaciones por plantas y micotoxinas en rumiantes

Franklin Riet-correa DVM, MSc, PhD



MAYO:

COMPLETED

Patología en signátidos: caballitos de mar, dragones de mar y peces pipa

nuevo horario 12 pm

Estefanía Montero Cortijo DVM, PhD



JULIO:

COMPLETED

Patología ósea

Fernando Dutra DVM, MSc



SEPTIE

COMPLETED

Patologías orales en perros y gatos. Enfoque clínico

nuevo horario 12 pm

Suanúa Serrano García DVM



NOVIE

20

Descripción histopatológica de neoplasias

Joaquin Ortega, DVM, PhD, DACVP



DICIE:

4

Diagnóstico de diarreas en rumiantes

Paco Uzal DVM, MSc, PhD, Dipl. ACVP

Registration for individual sessions is
available on the website

LCPG CORNER



Davis-Thompson
Foundation



ENFERMEDADES EN CERDOS Y AVES 9 Y 10 DE OCTUBRE 2025



DR RAMON MOLINA

DR RAYMUNDO CEDILLO

DR NESTOR LEDESMA

DRA MIREYA JUÁREZ

DRA ROSALBA CARREÓN



500-6000



INSTITUTO TECNOLÓGICO DE SONORA AV. ANTONIO CASO S/N COL. VILLA ITSON CP 85134 CD. OBREGÓN SONORA, MEXICO

[Click here to register](#)

LCPG CORNER



**LATIN COMPARATIVE
PATHOLOGY GROUP
PRESENTS:**

THE NEW WORLD SCREWWORM *AN UNWELCOME RETURN?*



PRESENTER:

DR. ROGER RAMIREZ BARRIOS, DVM, MS, PHD, DACVM (PARASITOLOGY)
DEPARTMENT OF BIOMEDICAL SCIENCES AND PATHOBIOLOGY
VIRGINIA MARYLAND COLLEGE OF VETERINARY MEDICINE
VIRGINIA TECH

Registration is free but required.

[Register Here!](#)

**Gaylord Rockies Resort &
Convention Center**

**November 1, 2025
7:00 AM-8:00 AM**



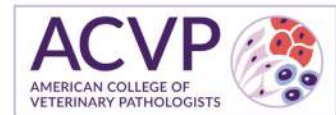
Davis-Thompson
Foundation



LCPG CORNER



Davis-Thompson
Foundation



THE LCPG SESSION

at the ACVP Annual Meeting, October 27th, 2025

12:00 - 12:30 PM

Case presentations

12:30 - 1:30 PM

Bone & Joint Pathology

1:30 - 2:30 PM

Business meeting



**Grad students and
residents**



Linden Craig
DVM, PhD, DACVP



Members +



**All events are open to
annual meeting registrants**



New Orleans, USA

LCPG CORNER



Davis-Thompson
Foundation



3er Seminario de la
Fundación Davis Thompson y
el Grupo Latinoamericano
de Patología Comparada

- Presencial
- \$100 estudiantes
\$120 profesionales (en preventa)
- Hotel TrinitariasSuites
Barquisimeto edo Lara, Venezuela

21 y 22 de Noviembre de 2025



Santiago Teyssandier



Rebeca Reyes



Pablo Manzuc



Javier Dlujnewsky



Antonio Rodríguez Bertos

[Click here to register](#)

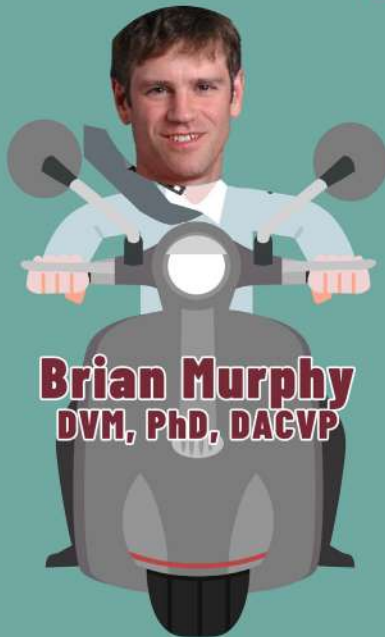
LCPG CORNER



Davis-Thompson
Foundation



Patología oral y ortopédica



Brian Murphy
DVM, PhD, DACVP



Brasil
Nov 20-21

Register here



CHILE
Nov 17-18

Register here



México
Nov 24-25

Register here

LCPG CORNER

USFQ | ESCUELA DE
VETERINARIA



Davis-Thompson
Foundation

1a Reunión Davis Thompson Foundation Ecuador

Guarde la fecha

8-9 Diciembre, 2025



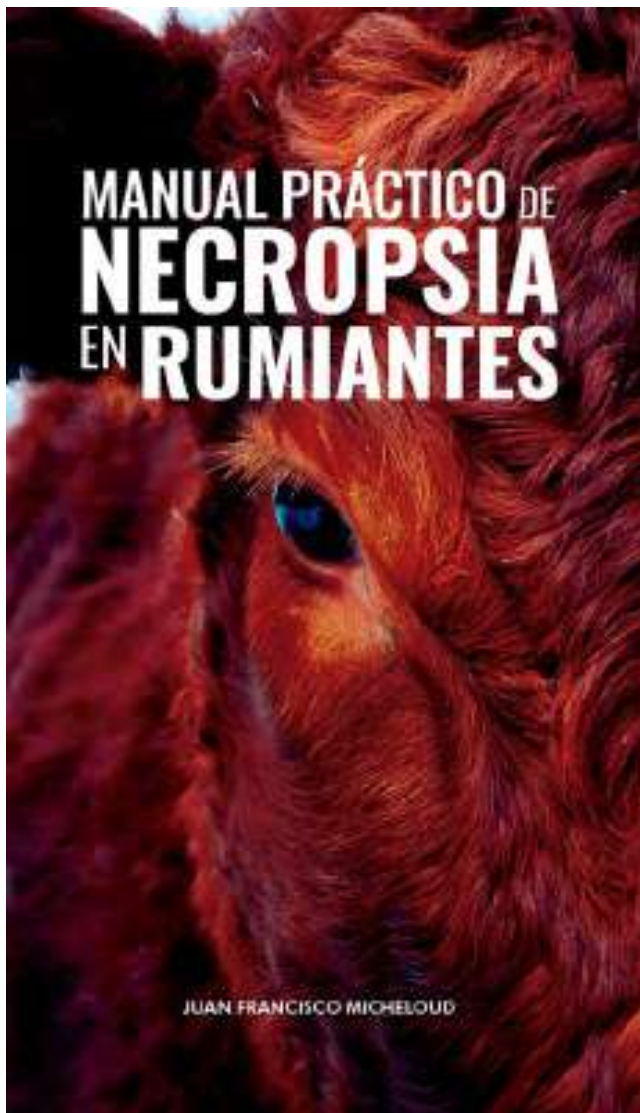
Universidad San Francisco de Quito
Teatro Calderón de la Barca

(\$ \$ 25 - 100



en persona

LCPG CORNER

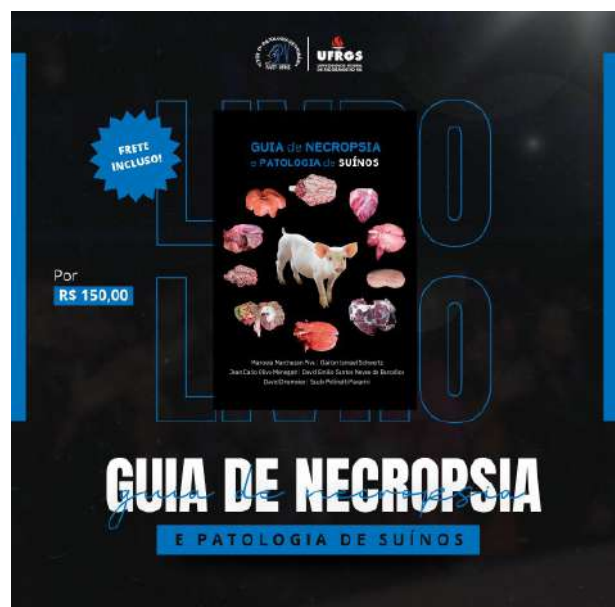


Versión impresa: <https://tiendaucasa.ucasal.edu.ar/productos/manual-practico-de-necropsia-en-ruminantes/>

Ebook: https://play.google.com/store/books/details/Juan_Francisco_Micheloud_Manual_pr%C3%A1ctico_de_necrop?id=V8V9EQAAQ-BAJ&hl=es_AR&pli=1



Como adquirir o seu: vendalivro.aborto@gmail.com



Como adquirir o seu: guia.patologia.suinos@gmail.com

LCPG CORNER



Become a member of the Latin Comparative Pathology Group

LCPG:

- Provides Diagnostic Exercises
- Offers travel awards
- Coordinates externships in US labs for Latin Americans
- Organizes and lectures in Latin American seminars and courses

The graphic includes a central map of Latin America with a purple and blue color scheme. Surrounding the map are five circular inset images: a cow's head with a red lesion, a microscopic view of purple-stained cells, a cross-section of a red and white organ, a white cat's face, and a group of people in a lecture hall. In the top left corner, there is a logo consisting of a blue map of Latin America and the text 'LCPG' written vertically.

Click here for more
information about
how to become a
member

GHPN SCHOLARSHIPS



DTF-GHPN Education Scholarship For Select DTF On-Line and/or Course Material



Background. The Global Health Pathology Network (GHPN), under the umbrella of the Davis-Thompson Foundation (DTF) for Veterinary Pathology, conducts workshops in resource-constrained settings focused on enhancing veterinary diagnostic abilities using interactive educational modalities and adult learning principles. In part, the success of the GHPN training workshops is built on the successes of in-country veterinary pathologists and professionals in various locations worldwide. Consequently, to expand the sphere of the network through the development of capable, motivated professional cadre, the GHPN recognizes the importance of practicing professionals to have the opportunities for continued professional development.

Objective. Through GHPN's alignment with the DTF, the DTF will offer up to 10 educational scholarships to attend select DTF on-line courses and/or have access to the course material at no-cost.

Application Criteria.

This scholarship is geared toward professionals without access to traditional residency training programs.

All applicants must prepare a 2-3 paragraph statement (no more than 300 words) addressing the following:

- Biographical information to include current work or academic history;
- Reason(s) for applying for the DTF educational scholarship;
- If awarded, the applicant's willingness to host a future GHPN workshop in his/her country.

GHPN SCHOLARSHIPS

Selection procedures and policies. GHPN leadership will screen all applications and submit the qualified applicants to the DTF for recommendation and final approval. Scholarship selection is based on the assessment of the applicant's statement and will be determined based on several factors to include relevant background, aptitude, training and mentorship abilities in veterinary pathology and animal health. The applicant's current location of employment and/or training will also be considered to ensure equitable distribution of scholarship opportunities in the given year. Applicants should send applications 30-60 days prior to the beginning of the course to allow for adequate review of the application. A list of upcoming and/or recurring select courses can be found under "Events" tab on the DTF website: <https://davisthompsonfoundation.org/>

Application Procedures Questions and Answers:

Q: Where and when are applications available/due?

A: Open registration; applications can be received at any time

Q: Where should applications be sent?

A: A signed PDF or word document paragraph statements are sent to [GH-PathNetwork@gmail.com](mailto:GHPathNetwork@gmail.com)

Q: What additional information/documents must accompany the application?

A: None; the signed paragraph statement is the only item required

Q: How and when will the scholarship award winners be notified?

A: Award winners will be notified via electronic correspondence sent to the email address in the paragraph statement

Q: When can the educational scholarships to attend select DTF on-line courses and/or have access to the course material be used?

A: Once awarded, the scholarship can be used at any time over a 365 day period from the date at which the scholarship is awarded.

Any additional questions regarding the DTF-GHPN educational scholarships and/or the GHPN general can be submitted to GHPathNetwork@gmail.com

OBITUARY PAUL HILDEBRANDT

Paul K. Hildebrandt, 91, of Frederick, Maryland, passed from this life on August 26, 2025, at Homewood at Crumland Farms. Born November 18, 1933, in Lamar, Colorado, Paul was the son of Knud and Olga (Hansen) Hildebrandt. He grew up a proud “green-sleeved farm boy,” driving tractors, baling hay, and cultivating the strong work ethic and warm sense of humor that carried him through life.



He met the love of his life, Jane, in high school. Their first date -a Friday night football dance that also happened to be Paul’s 16th birthday - sparked a loving partnership that lasted more than 70 years. The two married in 1953 while both were students at Colorado A&M, now Colorado State University.

After earning his Doctor of Veterinary Medicine degree, Paul served in the U.S. Army, where he was first stationed at Ft. Detrick in Frederick. He also served three years at NAMRU-3, an infectious disease research unit in Cairo, Egypt. Working in Egypt, Paul quickly picked up Arabic phrases that he used often and will live forever in family lore, most famously telling his kids to “use your mukh,” translation: use your brain!

OBITUARY PAUL HILDEBRANDT

During his Army career, Paul served as Director of Pathology at Walter Reed Army Institute of Research. He retired from the Army as a full colonel in 1981. Following his military career, Paul launched his own research company, PATHCO, and often commuted to Research Triangle in North Carolina by piloting his own plane.

Paul's life was never all work. He loved his collection of antique tractors, occasionally driving his Oliver 70 to Brook Hill United Methodist Church on sunny Sunday mornings. At Brook Hill he sang in the Alpha choir and played several seasons with the church softball team. Later, after surviving prostate cancer in 1995, Paul rediscovered fitness and made great friends at the Frederick YMCA. He became a daily swimmer and even represented Maryland in the Senior Olympics.

In retirement, Paul and Jane enjoyed "snow birding" - splitting time between summers in Frederick and winters in The Villages, Florida, where Paul polished his golf game, swapped stories with the Colorado and Scandinavian Clubs, and enjoyed nightly dancing in the town square. Back home in Maryland, he rarely missed a Friday night at Il Forno with his kids and their families. In 2019, Paul and Jane moved to Homewood at Crumland Farms, where he made friends with everyone he met -- residents and staff alike.

Paul never lost his Danish pride, his sense of humor, or his favorite sayings. When surprised you'd hear, "Great balls of fire!" On a really good day he'd be "feeling like a June bride." And when he raised a glass in toast he'd exclaim "Skåll!" the Danish "Cheers!"

OBITUARY PAUL HILDEBRANDT

In addition to his loving wife Jane, Paul is survived by four children: John Hildebrandt (Kathryn) of Damascus, Kristie McKillip of Frederick, Jerry Hildebrandt (Lisa) of New Market, and Lori Barrick (Matthew) of Frederick; nine grandchildren: Jennifer Zoll (Matt), Robert Hildebrandt (Anna), Jacob McKillip, Erik McKillip, Stephanie Riley (Dustin), Hansen Barrick, Hayden Barrick (Katie), Hannah Hildebrandt (Ryan Koenig), and Ryan Barrick; nine great-grandchildren: Angell, Camden, Lexi, Liam, Amy Rose, Harrison, Jude, Florence, and Bennett Paul; he will be missed by numerous nieces and nephews. He was predeceased by his brother, Erik Hildebrandt, and sister, Anita (Hildebrandt) Messimer.

Special thanks to the compassionate Homewood nursing staff, BridgingLife hospice care, and Visiting Angels. Paul's motto was, "Work hard, do the right thing, and good things will happen," so, in lieu of flowers, please make a donation to the charity of your choice.



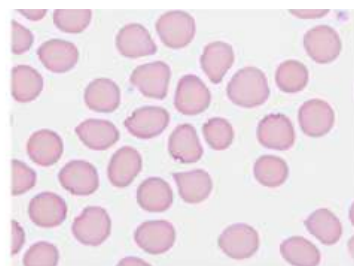
**Davis-Thompson
Foundation**

MISCELLANEOUS ANNOUNCEMENTS

Have you seen a Pathology Error published in a scientific journal?

Help us determine the extent of the problem

Submit to the **ACVP Errors in Publications Web Portal**
<https://www.acvp.org/page/ErrorsinPublication>



Click here to listen to past episodes of the podcast



Check out our archive!

Click here



MISCELLANEOUS ANNOUNCEMENTS



ARRIVAL

Surgical Pathology of Tumors of Domestic Animals
Edited by M. Kiupel

Intoxicaciones por plantas, micotoxinas y otras toxinas en rumiantes y équidos de Sudamérica
Franklin Riet-Correa
Juan Francisco Micheloud
Mizael Machado
Fábio de Souza Mendonça
Ana Lucia Schild
Ricardo Antônio Amaral de Lemos

Volume 1: Epithelial Tumors of the S

CHECK OUT OUR STORE FOR BOOKS AND MERCH

CLICK HERE



AAVLD
FOUNDATION COMMITTEE FUNDRAISER

Rocky Mountain National Park

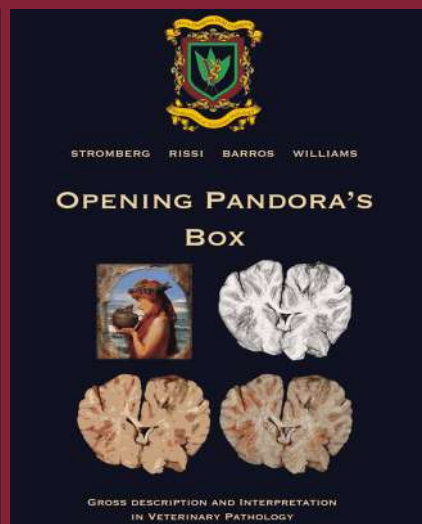
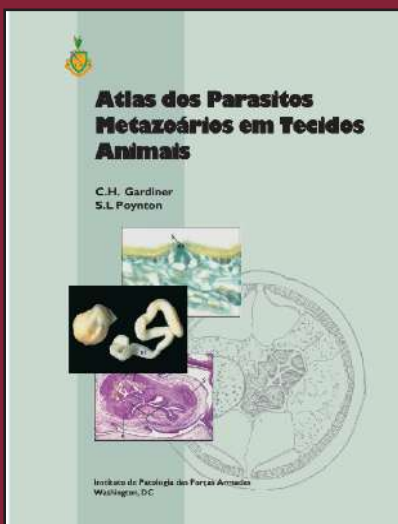
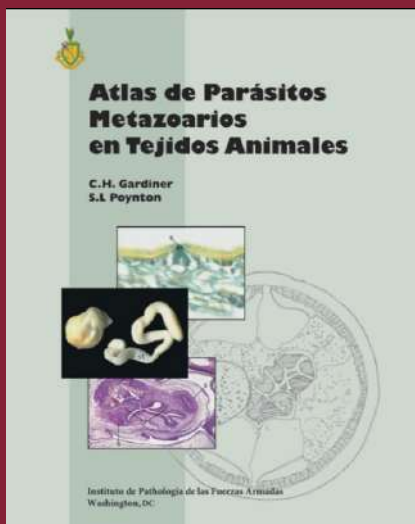
Come learn about Rocky Mountain National Park wildlife management from a National Park Service veterinarian. This is a whole day sightseeing tour through the park.

Cost: \$150 (includes bus transportation to and from the Gaylord)

- A minimum number of registrants must sign up or this trip will be cancelled
- RSVP to kristy.pablonia@colostate.edu by August 29, 2025

OCTOBER 30, 2025
8:00 AM - 5:00 PM

MISCELLANEOUS ANNOUNCEMENTS



[Click here](#) to Get a Digital Download of our e-books!

RETIRING?

Have slides left over from your recent slide seminar? Just looking to free up some storage space? The Foundation is looking for additional glass slides, kodachromes and other similar materials for its Correspondence Division and Study Centers. All materials should be well identified with as much accompany history and discussion as possible, as these materials are expressly used for teaching. Moreover, as the Foundation is a publicly donative charity, all donated materials are tax-deductible. For more information, please contact Dr. Bruce Williams at bruce.h.williams.dvm@gmail.com.

Davis-Thompson Foundation Pathology Externship

Since 1980, the Davis-Thompson Foundation lab sites have hosted more than 125 veterinary students at 8 participating diagnostic laboratories. These students usually have a strong interest in pathology itself or zoo or poultry medicine that require a strong pathology background. The Foundation is always interested in having veterinary students apply for an externship and we would like to add more externship sites that do not usually have veterinary students, to help increase their interest and knowledge of pathology with some off-campus experience. For more information, contact Dr. Jim Britt, jobritt@sbcglobal.net; 501-912-1449.



**Davis-Thompson
Foundation**

DAVIS-THOMPSON FOUNDATION

Phone: 847-367-4359

Fax: 847-247-1869

davis-thompsonfoundation.org

cldavisdvm@comcast.net

OCTOBER 2025