

# Diagnostic Exercise

## From The Davis-Thompson Foundation\*

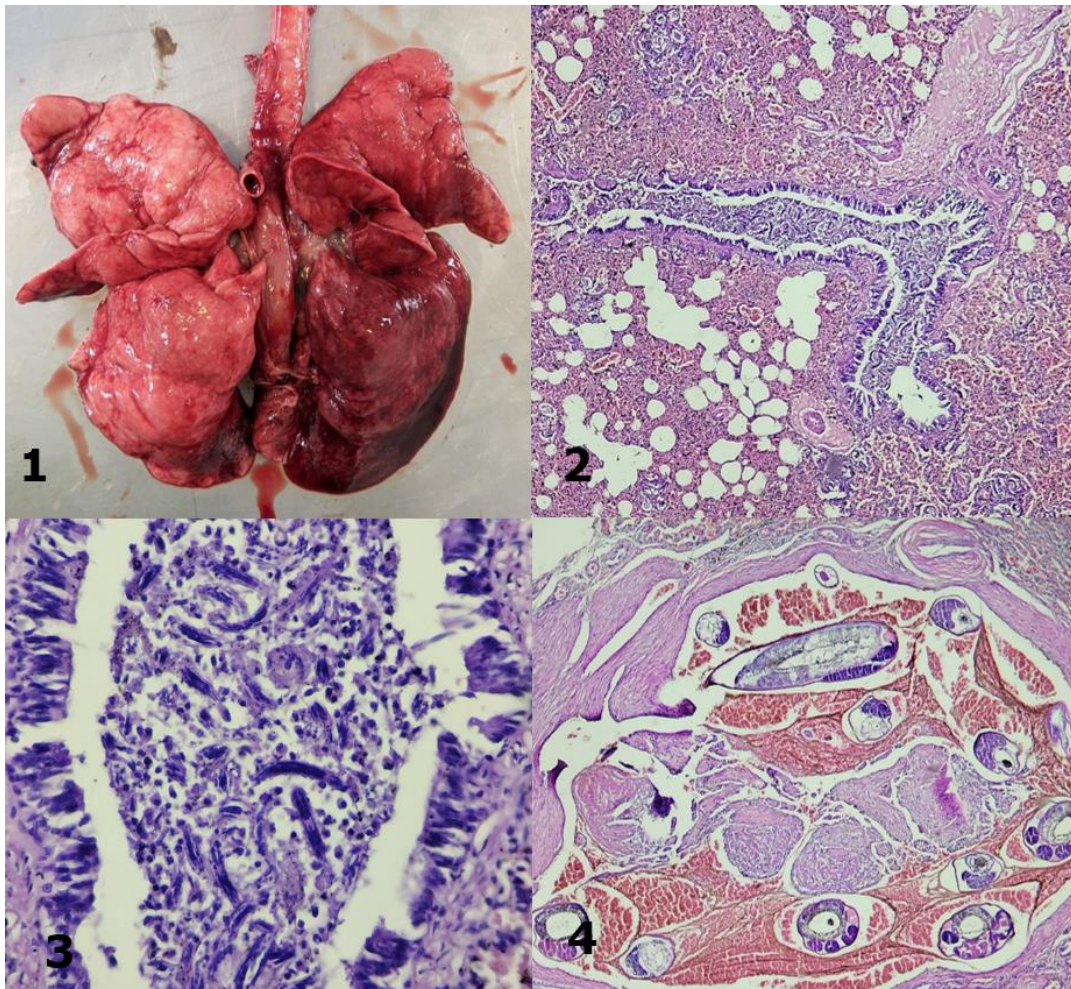
Case #260; Month: **May**; Year: **2025**  
*Question sheet*

<sup>1</sup>**Contributors:** Renata Brizzio<sup>1</sup> Cecilia Degiovanni<sup>1\*</sup>, Ana Maria Martin<sup>1</sup>  
 Patologia Animal Cordoba, Cordoba, Argentina.

**\*Corresponding author:** [cecidegiovanni28@gmail.com](mailto:cecidegiovanni28@gmail.com)

**History:** A juvenile, gray fox arrived at the zoo with dehydration, depression and poor body condition. He died the day after arrival.

**Necropsy findings:** Grossly, both lungs (Fig. 1) were markedly edematous and had an increased consistency. They did not collapse when the thoracic cavity was open. Samples from both lungs (Figs 2, 3 and 4) were submitted for histopathology.



**Follow-up questions:**

- *Morphologic diagnosis:*
- *Etiology:*

\*The Diagnostic Exercises are an initiative of the Latin Comparative Pathology Group (LCPG), the Latin American subdivision of The Davis-Thompson Foundation (DTF). These exercises are contributed by members and non-members from any country of residence. Consider submitting an exercise! A final document containing this material with answers and a brief discussion will be posted on the DTF website.

(<https://davisthompsonfoundation.org/diagnostic-exercise/>)

**Associate Editor for this Diagnostic Exercise:** Daniel Rissi

**Editor-in-chief:** Claudio Barros