

# Diagnostic Exercise

## From The Davis-Thompson Foundation\*

Case #266; Month **August**; Year: **2025**

### Question sheet

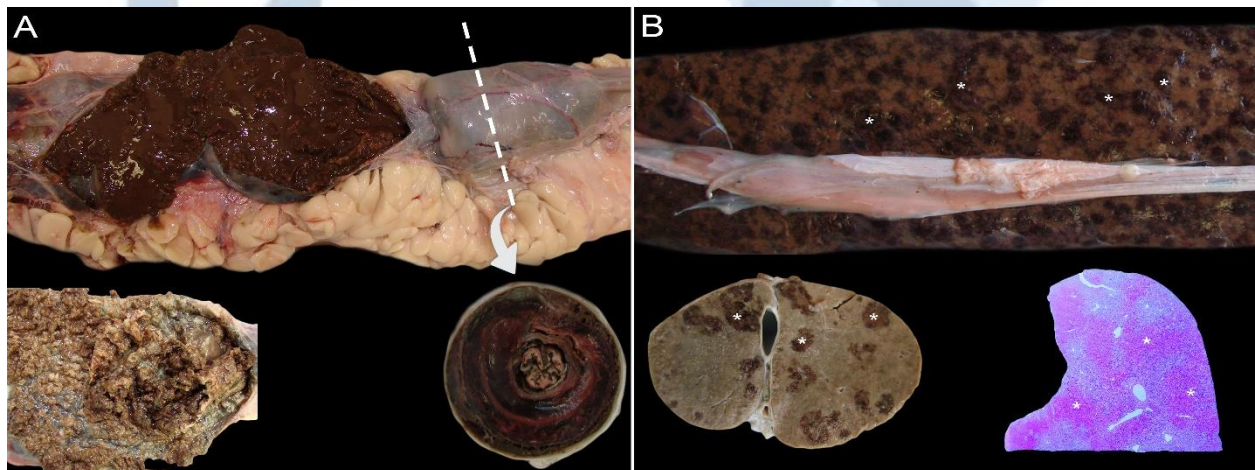
**Contributors:** Bruno Camilo de Souza<sup>1</sup>, João Paulo da Silva Cavasani<sup>1</sup>, Wuglenya Daislla Martins da Silva<sup>1</sup>, Caroline Argenta Pescador<sup>1</sup>, Edson Moleta Colodel<sup>1</sup>, Fernando Henrique Furlan<sup>1\*</sup>.

<sup>1</sup>Veterinary Pathology Laboratory, Veterinary Hospital, Federal University of Mato Grosso, Brazil.

<sup>1\*</sup>**Corresponding author:** [fernando.furlan@ufmt.br](mailto:fernando.furlan@ufmt.br)

**History:** An adult, male, green anaconda (*Eunectes marinus*) from “Universidade Federal de Mato Grosso” (UFMT) Zoo’s collection showed apathy, anorexia and bloody feces. This snake died during clinical evaluation and was submitted to necropsy.

**Necropsy findings:** The autopsy revealed a colon intussusception. The intestinal wall was thickened in this area with an irregular mucosa covered with a yellow-brownish and hemorrhagic fibrin pseudo membrane (Figure 1A). The hepatic lesion affected about 40% of the capsular and cut surfaces and was characterized by multifocal-to-coalescing firm and dark-red areas about 0.5 to 1cm in diameter (Figure 1B). Samples from all the organs and various muscle fragments were collected and fixed in 10% neutral-buffered formalin for morphologic studies.



**Figure 1.** A – Large intestine showing a colon intussusception (upper right) and the cut surface of that region (Arrow). The intestinal mucosa is irregular and covered with brown feces (upper left). After washing, the mucosa revealed a yellow-brownish and hemorrhagic fibrin pseudo membrane (down left). B – Liver: non-formalin-fixed capsular surface (upper), formalin-fixed cut surface (down left), showing multifocal-to-coalescing dark-red areas about 0.5 to 1cm of diameter (asterisks) corresponding to liver necrosis in the sub-macroscopic view of a H&E-stained photomicrograph of liver section (down right)

Follow-up questions:

- *Morphologic diagnosis:*
- *Etiology:*
- *Differential diagnosis:*

\*The Diagnostic Exercises are an initiative of the Latin Comparative Pathology Group (LCPG), the Latin American subdivision of The Davis-Thompson Foundation (DTF). These exercises are contributed by members and non-members from any country of residence. Consider submitting an exercise! A final document containing this material with answers and a brief discussion will be posted on the DTF website.

(<https://davisthompsonfoundation.org/diagnostic-exercise/>)

**Associate Editor for this Diagnostic Exercise:** Saulo Pavarini  
**Editor-in-chief:** Claudio Barros