



# Diagnostic Exercise

## From The Davis-Thompson Foundation\*

Case #: Month: Year:  
*Question Sheet*

**Contributors:** Bianca S. de Cecco<sup>1</sup>, Adam Moreno<sup>2</sup>, Aliya Magee<sup>2</sup>, Virginie A. Wurlod<sup>2</sup>, Fabio Del Piero<sup>1</sup>,

<sup>1</sup>Louisiana Animal Disease Diagnostic Laboratory, Baton Rouge, LA, United States.

<sup>2</sup>Veterinary Teaching Hospital, Louisiana State University, Baton Rouge, LA, USA.

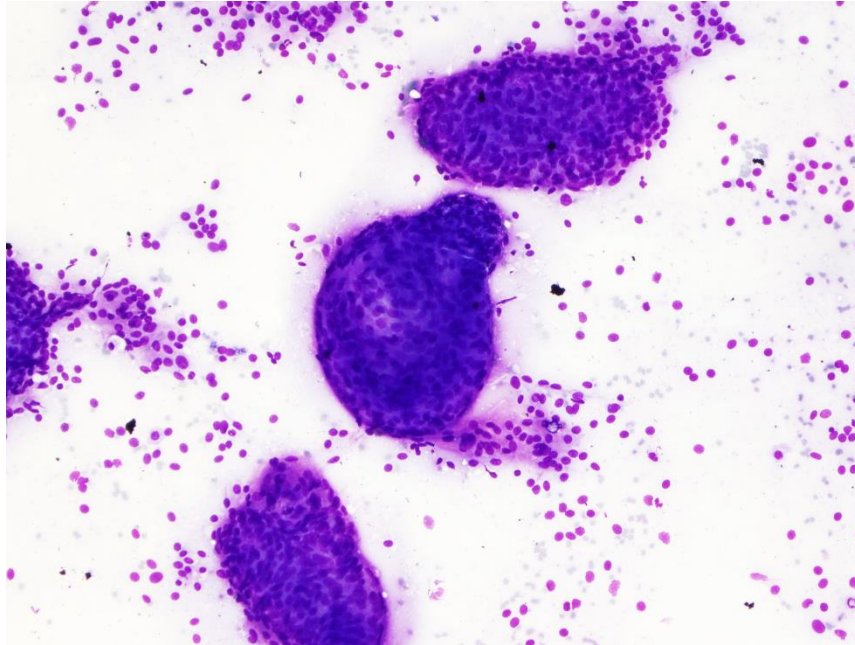
**Corresponding author:** [bdececco@lsu.edu](mailto:bdececco@lsu.edu)

**Clinical History:** A 14-year-old male castrated domestic shorthair cat was presented to the Louisiana State University Veterinary Teaching Hospital for suspected seizures, incontinence, and poor body condition, and was deceased on arrival. The patient had been previously diagnosed two years earlier with severe concentric hypertrophy of the left ventricular parietal wall and interventricular septum secondary to hyperthyroidism or primary hypertrophic cardiomyopathy. Approximately 20 days prior to death, the cat presented hematuria, lethargy, increased respiratory rate and effort, and severe weight loss (approximately 2 kg). On the day of the death, the owner reported that the patient had a seizure-like episode of convulsing and falling over and became non-responsive. The owner consented to a post-mortem examination, and a necropsy was performed.

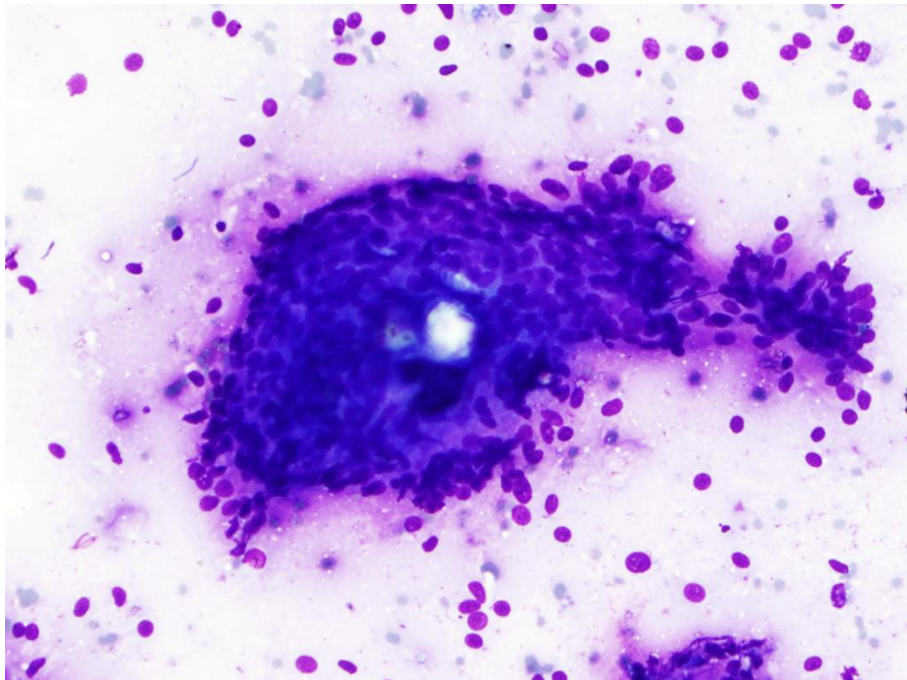
### Gross, Cytological and Histological Images:



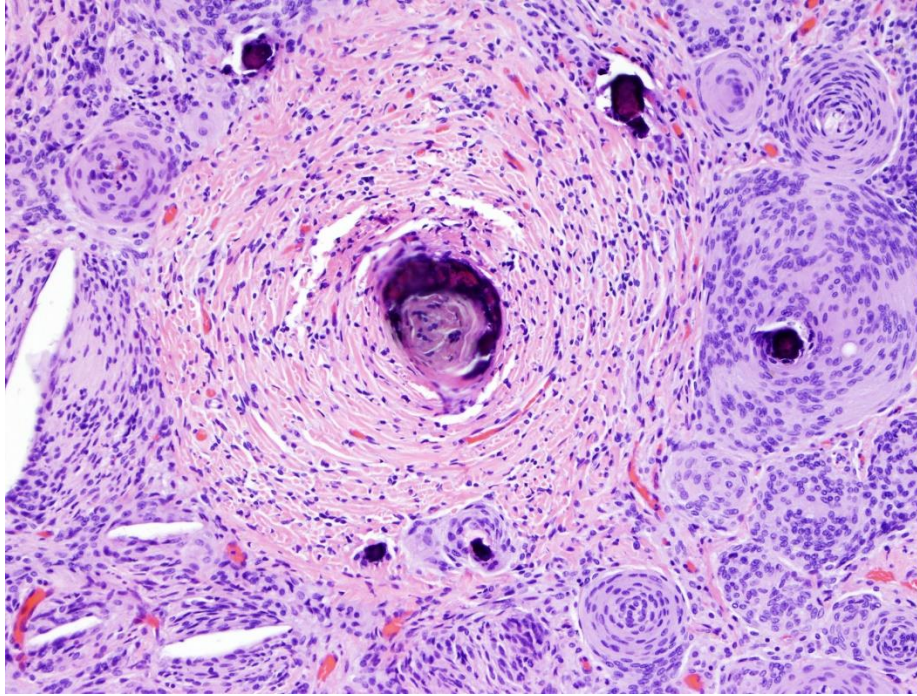
**Figure 1.**



**Figure 2.**



**Figure 3.**



**Figure 4.**

**Follow-up questions:**

- *Description of gross, cytological and histologic features*
- *Morphologic diagnosis*

\*The Diagnostic Exercises are an initiative of the Latin Comparative Pathology Group (LCPG), the Latin American subdivision of The Davis-Thompson Foundation. These exercises are contributed by members and non-members from any country of residence. - Consider submitting an exercise! - A final document containing this material with answers and a brief discussion will be posted on the CL Davis website ([http://www.cldavis.org/diagnostic\\_exercises.html](http://www.cldavis.org/diagnostic_exercises.html)).

**Associate Editor for this Diagnostic Exercise:** Saulo Pavarini

**Editor-in-chief:** Claudio Barros