



Diagnostic Exercise

From The Davis-Thompson Foundation*

Case #: **193**; Month: **July**; Year: **2022**

Contributors: Luan Cleber Henker¹, DVM, MS, PhD candidate; Marina Paula Lorenzett¹, DVM, MS, PhD candidate; David Driemeier¹, DVM, MS, PhD, Professor; Luciana Sonne¹, DVM, MS, PhD, Professor; Saulo Petinatti Pavarini¹, DVM, MS, PhD, Professor; ¹Setor de Patologia Veterinária, Universidade Federal do Rio Grande do Sul (UFRGS), Porto Alegre, Rio Grande do Sul, 91540-000, Brazil.
luanchenker@gmail.com

Clinical History: An anomalous bovine fetus was submitted from a slaughterhouse for pathological evaluation at the Setor de Patologia Veterinária (UFRGS). No history was available regarding the dam, the gestation length, and the farm.

Necropsy findings: the fetus was represented by a round to oval mass nearly entirely covered by a white and black hair coat. The anomalous fetus measured 13x8x5cm in diameter, presented an umbilical cord, and had no limbs, neck and head (Figure 1). Two openings (1-2cm in diameter) were observed in close proximity to the umbilical cord. These openings did not communicate with any internal structures. On cross section the mass was solid and white to light pink (Figure 2). No body cavities, differentiated organs and bones were observed. The placenta was not available for evaluation.

Gross images



Figure 1. External examination of the anomalous fetus.

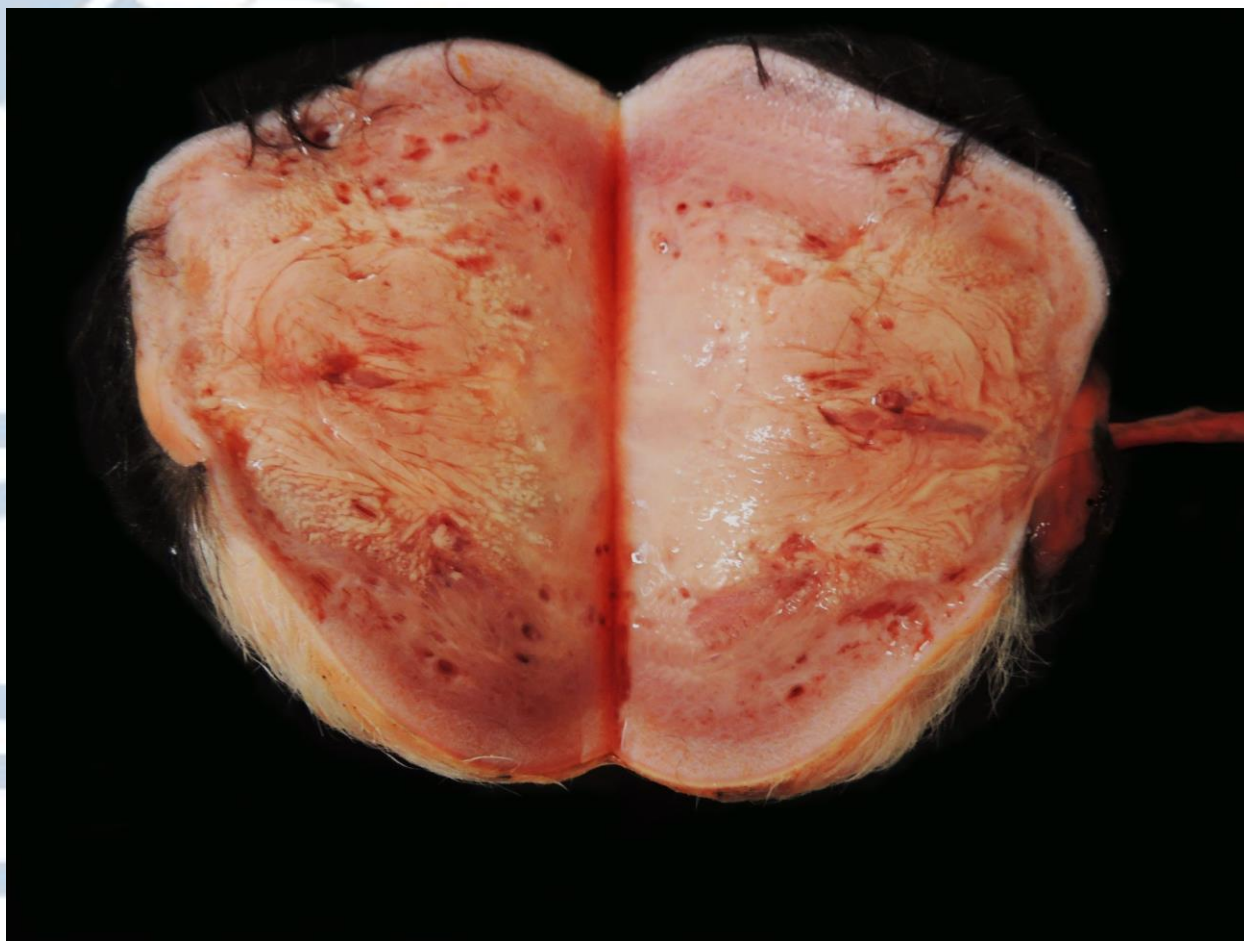


Figure 2. Cross section of the anomalous fetus.

Follow-up questions:

- (1) *Morphological diagnosis*
- (2) *Required gestation feature for the occurrence of the condition*

*The Diagnostic Exercises are an initiative of the Latin Comparative Pathology Group (LCPG), the Latin American subdivision of The Davis-Thompson Foundation. These exercises are contributed by members and non-members from any country of residence. - Consider submitting an exercise! - A final document containing this material with answers and a brief discussion will be posted on the CL Davis website (http://www.cldavis.org/diagnostic_exercises.html).

Associate Editor for this Diagnostic Exercise: Saulo Pavarini

Editor-in-chief: Claudio Barros