

# DIAGNOSTIC EXERCISE

## From The Davis-Thompson Foundation\*

Case #: **251**; Month: **December**; Year: **2024**  
*Question Sheet*

**Contributors:** Ariadni Kotzias Bandeira<sup>1</sup>, Silvio C. Fonseca<sup>1</sup> and Fábio S. Mendonça<sup>1</sup>  
<sup>1</sup>Laboratory of Animal Diagnosis, Federal Rural University of Pernambuco, Recife, PE, Brazil.

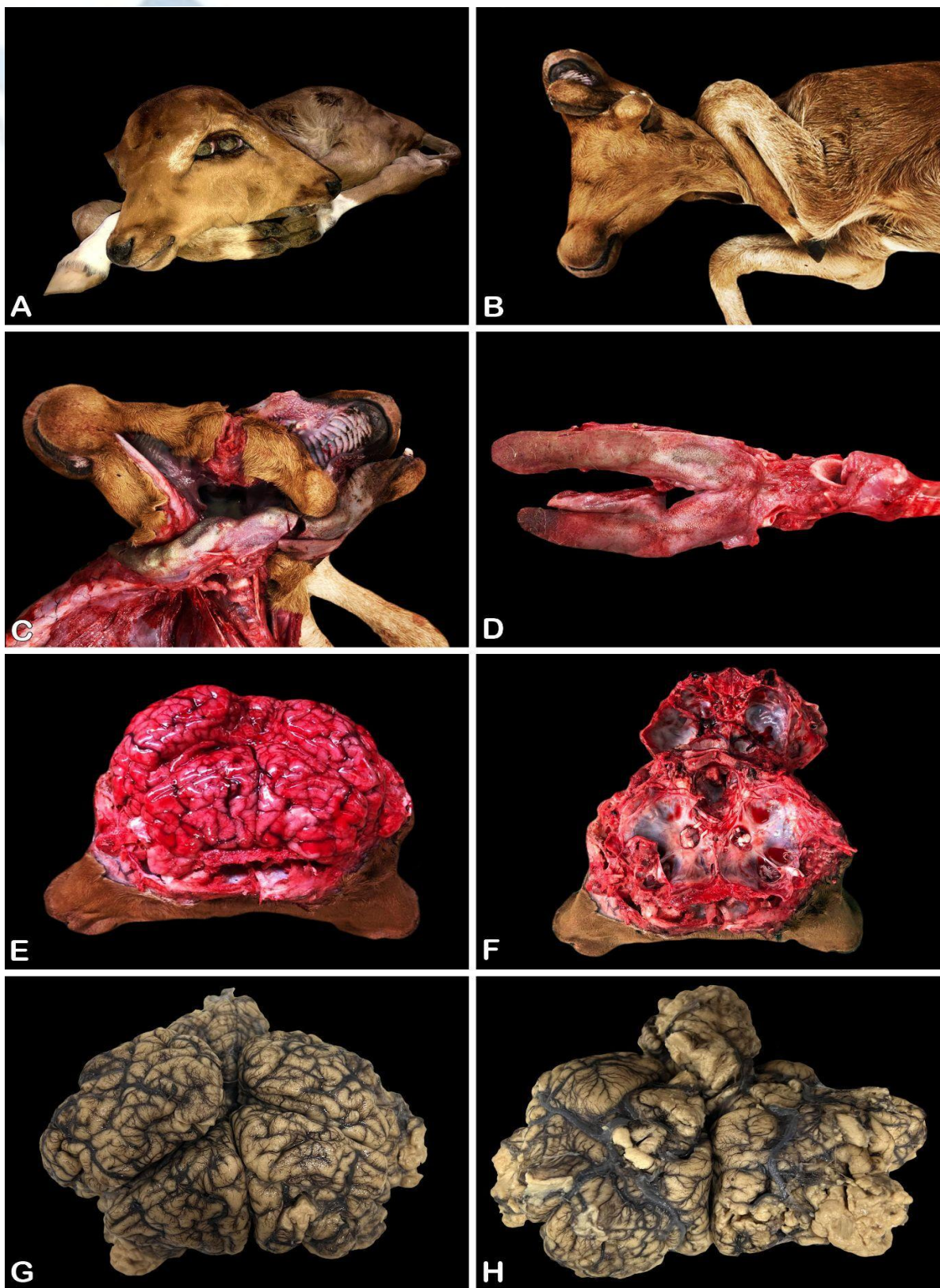
**Corresponding author:** [fabio.mendonca@ufrpe.br](mailto:fabio.mendonca@ufrpe.br)

**Clinical history:** A technical visit to a farm was requested due to the birth of a neonate calf with anatomical deformities in its head. The calf was unable to suckle and, for this reason, was receiving fresh cow milk in a feeding bottle but died 3 days after birth.

### Gross Images:



**Figure 1.**



**Figure 2**

**Follow-up questions:**

- *Macroscopic description*
- *Name of the condition*
- *Possible etiologies*

\*The Diagnostic Exercises are an initiative of the Latin Comparative Pathology Group (LCPG), the Latin American subdivision of The Davis-Thompson Foundation. These exercises are contributed by members and non-members from any country of residence. Consider submitting an exercise! A final document containing this material with answers and a brief discussion will be posted on the CL Davis website (<https://davisthompsonfoundation.org/diagnostic-exercise/>).

**Associate Editor for this Diagnostic Exercise:** Saulo Pavarini  
**Editor-in-chief:** Claudio Barros