



# DIAGNOSTIC EXERCISE

## From The Davis-Thompson Foundation



Case: # **262**; Month: **June**; Year: **2025**  
*Question Sheet*

**Contributors:** Cristina Madelein Toledo<sup>1</sup>, Kevin Berrios Fuentes<sup>1</sup>, Junior Raxa Chavarría Rivera<sup>1</sup>, Ervin Antonio Cano Gómez<sup>1</sup>, Mario Guillermo Rimoldi<sup>2</sup>, Francisco Carvallo<sup>3</sup>

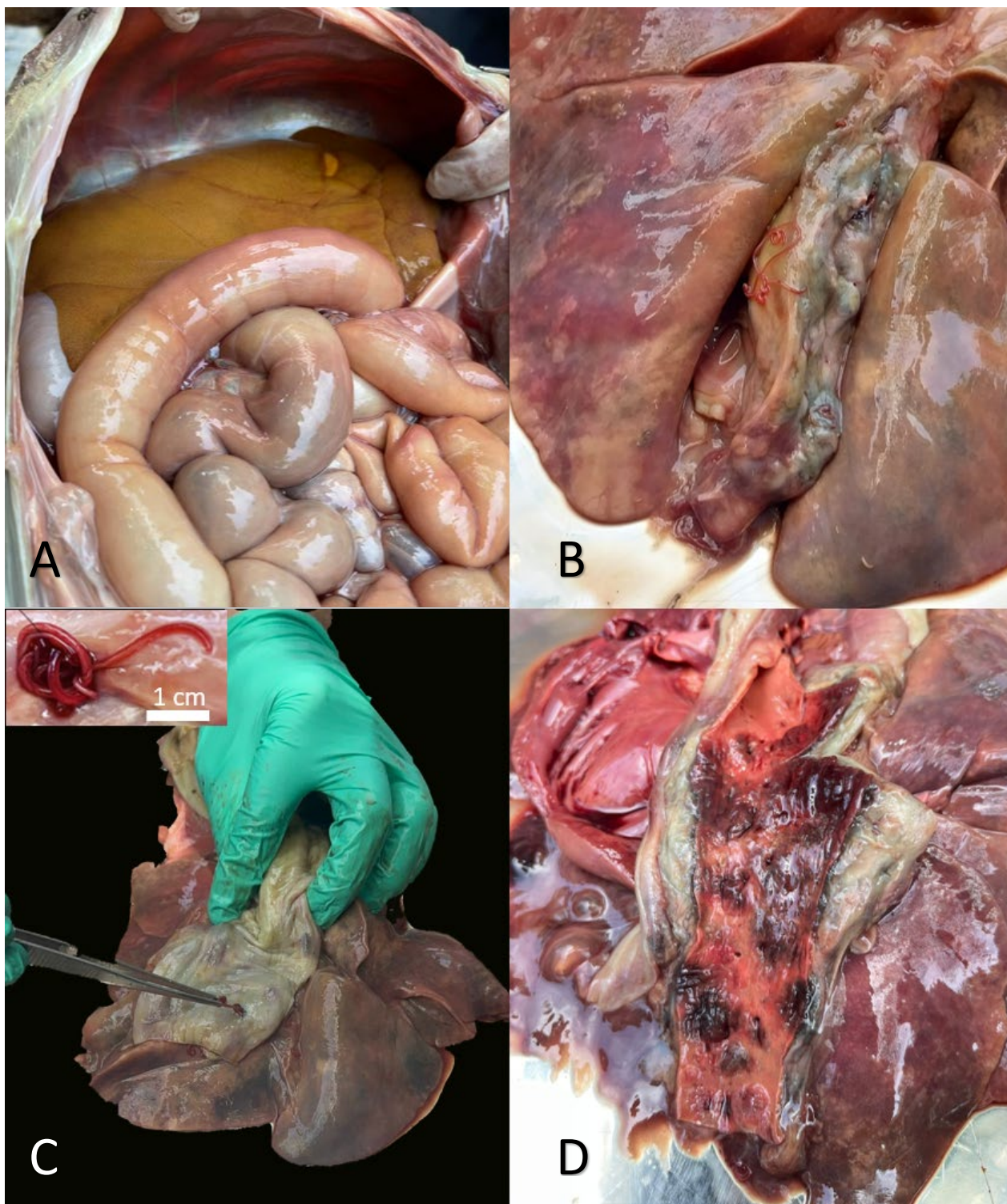
<sup>1</sup>Universidad de Ciencias Comerciales, Managua, Nicaragua. <sup>2</sup>Clemson Veterinary Diagnostic Center, Clemson University, SC, USA. <sup>3</sup>Virginia-Maryland College of Veterinary Medicine, VA, USA.

**Corresponding author:** Cristina Toledo; [cristina.toledo@ucc.edu.ni](mailto:cristina.toledo@ucc.edu.ni)

**Clinical History:** An adult female mixed breed dog was found in a local street market and taken to an animal rescue center. A hemogram on the day of arrival revealed anemia, lymphopenia, as well as thrombocytosis and neutrophilia. The patient received prophylactic treatment with praziquantel, febendazole, toltrazuril, and doxycycline, but died 6 days after arrival.

**Gross Findings:** The carcass was found in a poor nutritional status, with depleted body fat stores and icteric mucous membranes. The liver was pale and tan (presumably hepatic lipidosis)(Fig. 1 A). Multiple encysted and free, red, thin nematodes were detected in the esophageal wall and caudal mediastinum (around the aorta and esophagus) associated with swelling of surrounding soft issues (Fig. 1 B and C). Multiple areas with thickening and reddening of the thoracic aorta were detected (Fig. 1 D). Additionally, other nematode parasites (morphologically suggestive of *Ancylostoma* sp.) were detected in the small intestine (not illustrated).

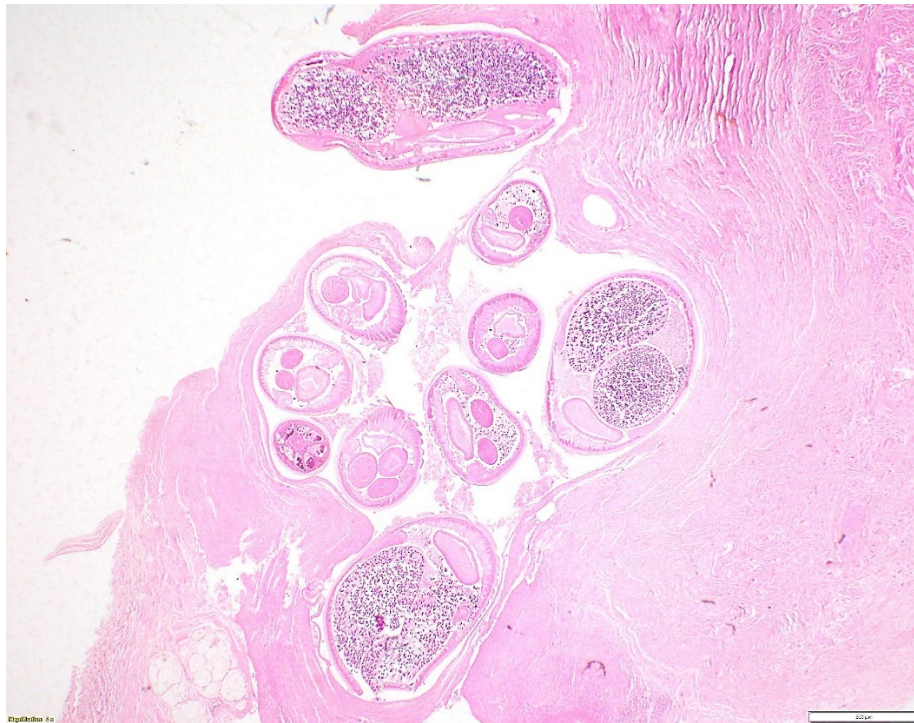
**Gross images:**



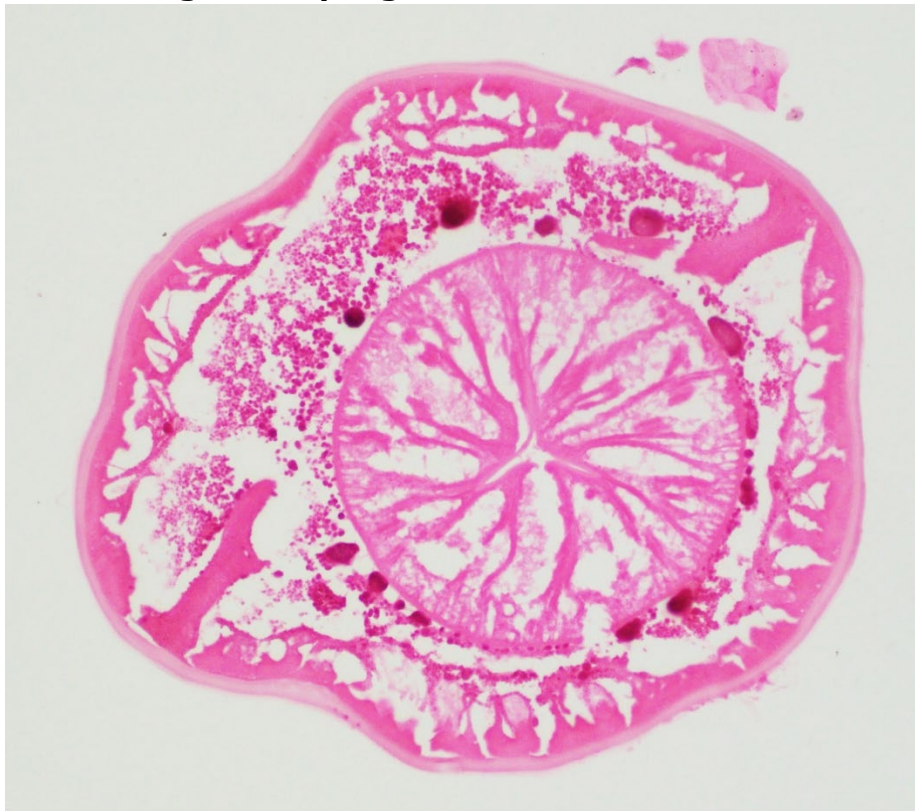
**Fig. 1**



**Microscopic images:**



**Fig. 2. Esophagus.**



**Fig. 3**

### **Follow-up questions**

- *Name of disease*
- *Morphologic diagnosis (gross)*
- *Microscopic description*
- *Etiological agent description*

\*The Diagnostic Exercises are an initiative of the Latin Comparative Pathology Group (LCPG), the Latin American subdivision of The Davis-Thompson Foundation (DTF). These exercises are contributed by members and non-members from any country of residence. Consider submitting an exercise! A final document containing this material with answers and a brief discussion will be posted on the DTF website

(<https://davisthompsonfoundation.org/diagnostic-exercise/>).

**Editor for this Diagnostic Exercise:** Daniel Rissi

**Editor-in-chief:** Claudio Barros