



Diagnostic Exercise

From The Davis-Thompson Foundation*

Case **267**; Month:**August**; Year: **2025**
Question Sheet

Contributors: Carolina Fontana¹, Luan Henker², Rachel Neto²

¹União Dinâmica de Faculdades Cataratas, Foz do Iguaçu, PR, Brazil.

²Department of Pathobiology, Auburn University, Auburn, AL, USA

Corresponding author: rtn0004@auburn.edu

History: A 6-year-old, spayed female, 630-g, ferret was evaluated for a 7-day history of progressive lethargy, anorexia, decreased water intake, and abdominal distention. The animal had been previously diagnosed with adrenal disease and was being managed with subcutaneous deslorelin acetate implants. Abdominal ultrasound revealed a large (at least 6.2-cm x 3.6-cm), mixed echogenic mid-abdominal mass. During the ultrasound exam, the patient developed respiratory arrest and died after cardiopulmonary resuscitation was discontinued per owner's decision.

Necropsy findings: The abdomen was severely distended and pendulous. An 8-cm x 6.5-cm x 5-cm, 81-g (12.9% of body weight), encapsulated, multilobulated, dark red to light brown mass was at the caudo-dorsal region, occupying at least 50% of the abdominal cavity, compressing and displacing the left and right kidneys. On the cut surface, the mass was predominantly lobulated, light yellow, and soft, interspersed with a few 5-mm to 2-cm cavitations filled with dark red friable material. The left adrenal gland was not located. A 5-mm x 4-mm x 3-mm cyst was present in the corticomedullary junction of the left kidney, and the spleen was moderately enlarged and meaty. No gross changes were observed in the remaining organs.

Gross and microscopic images:



Figure 1

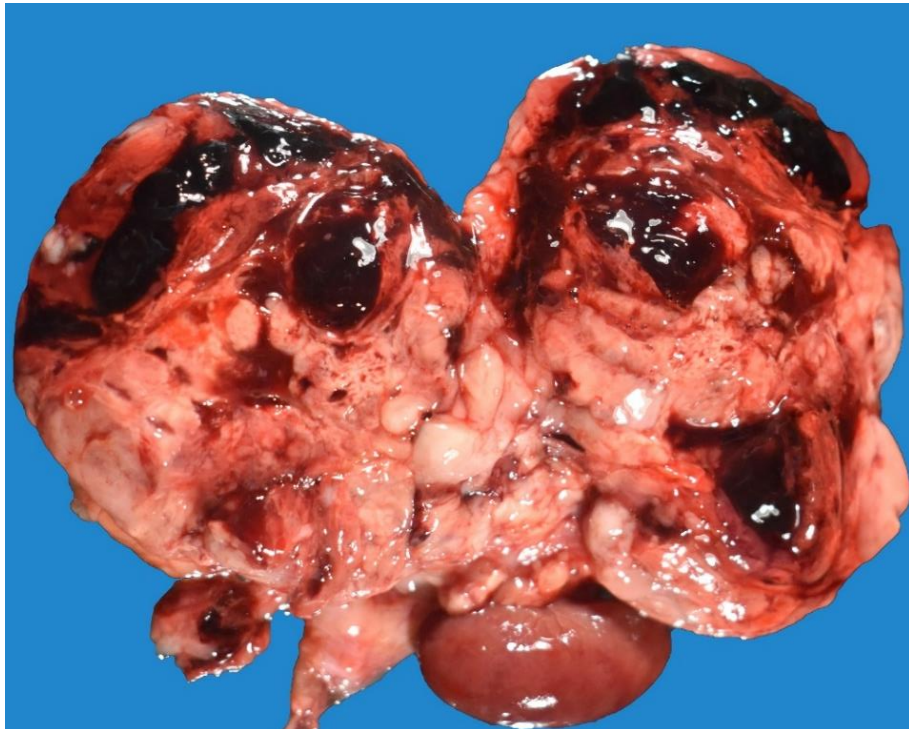


Figure 2

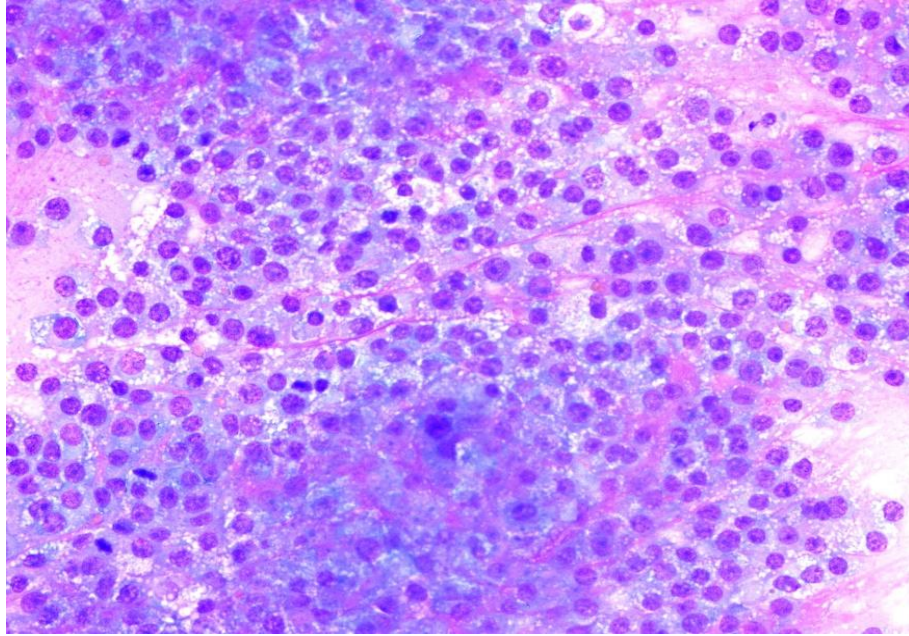


Figure 3

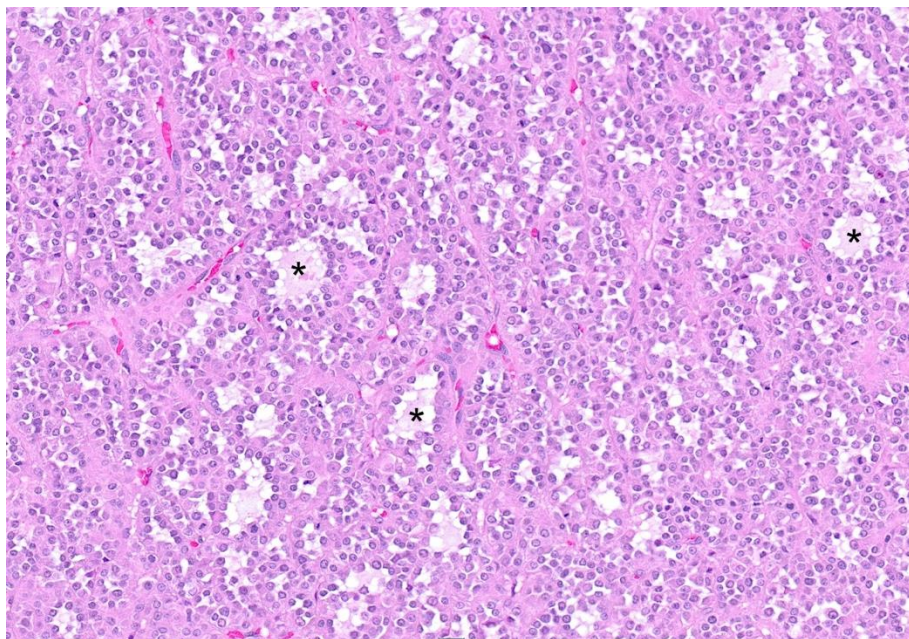


Figure 4

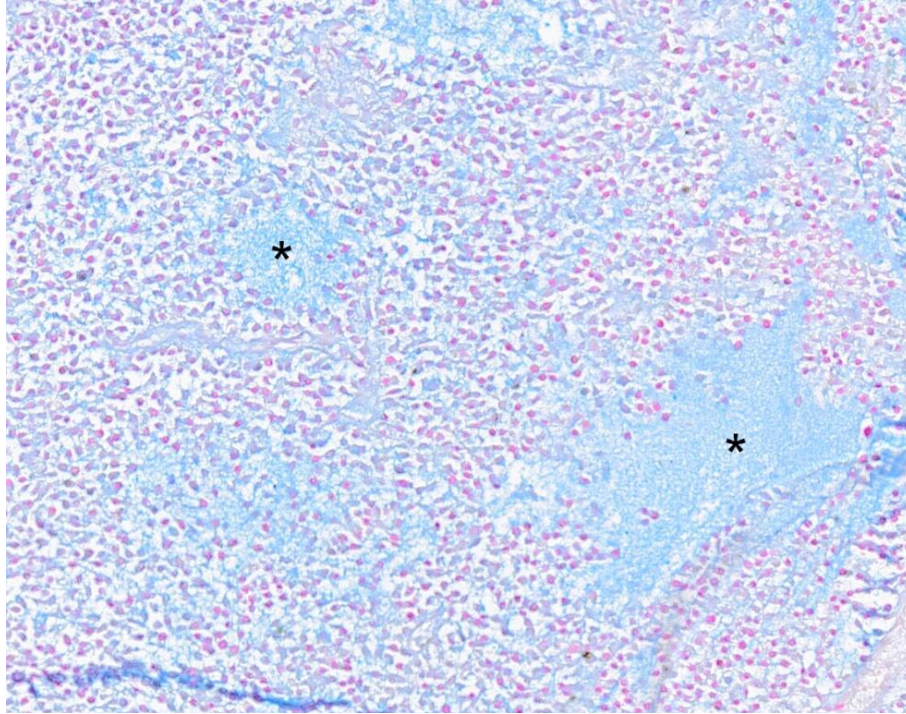


Figure 5

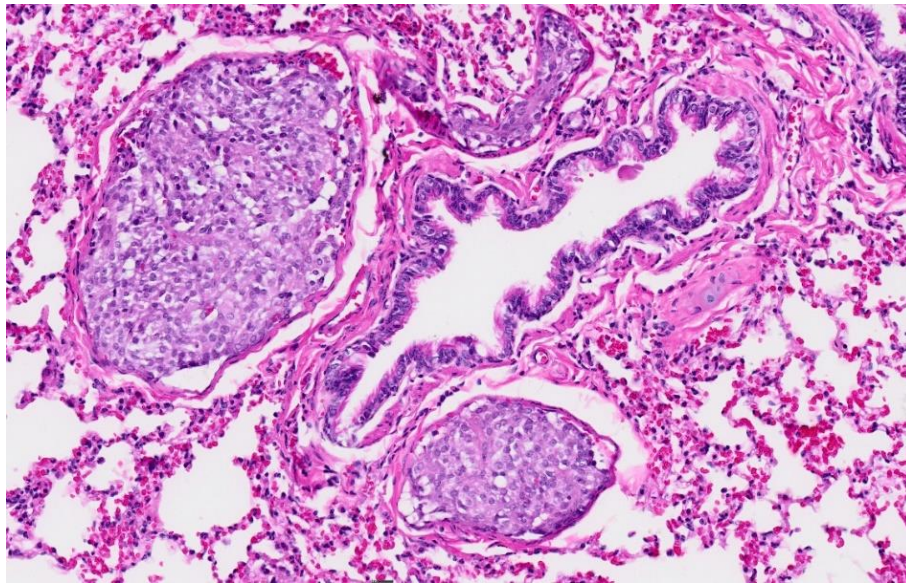


Figure 6

Follow-up questions:

- *Morphologic diagnosi(e)s*
- *Main clinical and laboratory findings typically associated with this entity*
- *Main differential diagnoses*

*The Diagnostic Exercises are an initiative of the Latin Comparative Pathology Group (LCPG), the Latin American subdivision of The Davis-Thompson Foundation (DTF).

These exercises are contributed by members and non-members from any country of residence. Consider submitting an exercise! A final document containing this material with answers and a brief discussion will be posted on the DTF website.

(<https://davisthompsonfoundation.org/diagnostic-exercise/>)

Associate Editor for this Diagnostic Exercise: Saulo Pavarini

Editor-in-chief: Claudio Barros