



Diagnostic Exercise

From the CL Davis/SW Thompson Foundation

Case # **219**; Month: **August**; Year: **2023**
Question sheet

Contributors: Agustín Rebollada-Merino^{1,2} and Francisco A. Uzal³. ¹VISAVET Health Surveillance Centre, Complutense University of Madrid. ²Department of Internal Medicine and Animal Surgery, Faculty of Veterinary Medicine, Complutense University of Madrid. ³California Animal Health and Food Safety Laboratory System, San Bernardino Branch, University of California-Davis, San Bernardino, CA, USA. fauzal@ucdavis.edu

Clinical history: A 6-year-old Angus cross cow euthanized due to being down and seizuring for 12 hours.

Gross findings: the carcass was in poor nutritional condition, with no fat reserves, mild but generalized muscle atrophy and serous atrophy of fat. The four chambers of the heart were moderately dilated. The lungs were edematous and congested. Both corneas were opaque and had whitish/blueish discoloration (Fig. 1). A formalin-fixed cut section of the eye is shown in Fig. 2.



Figure 1

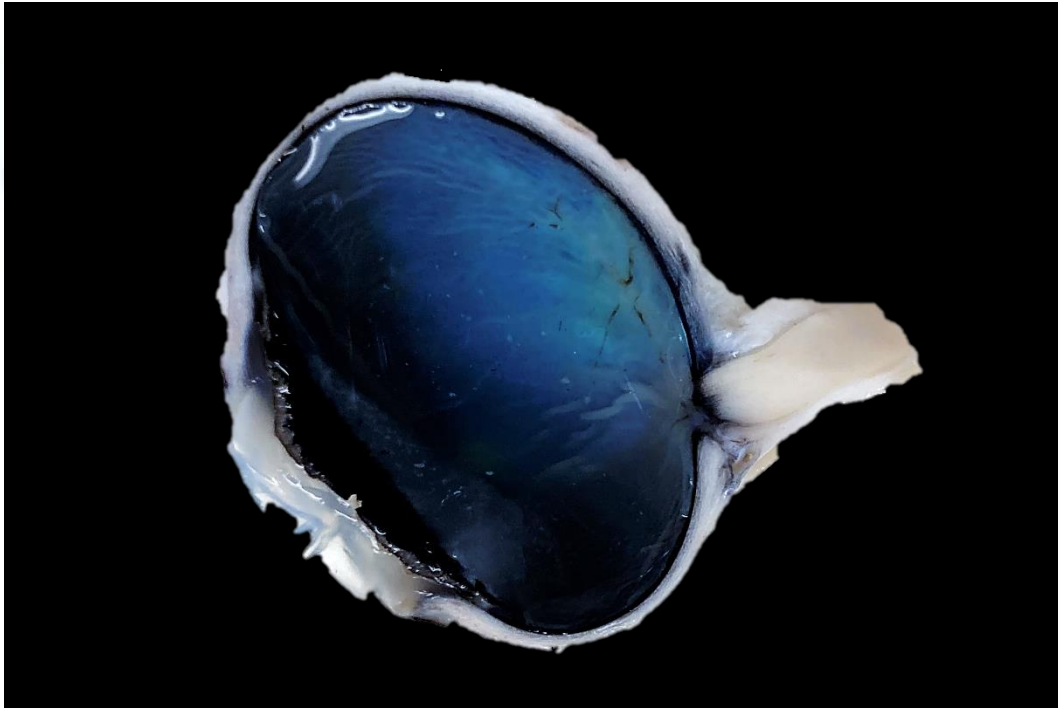


Figure 2

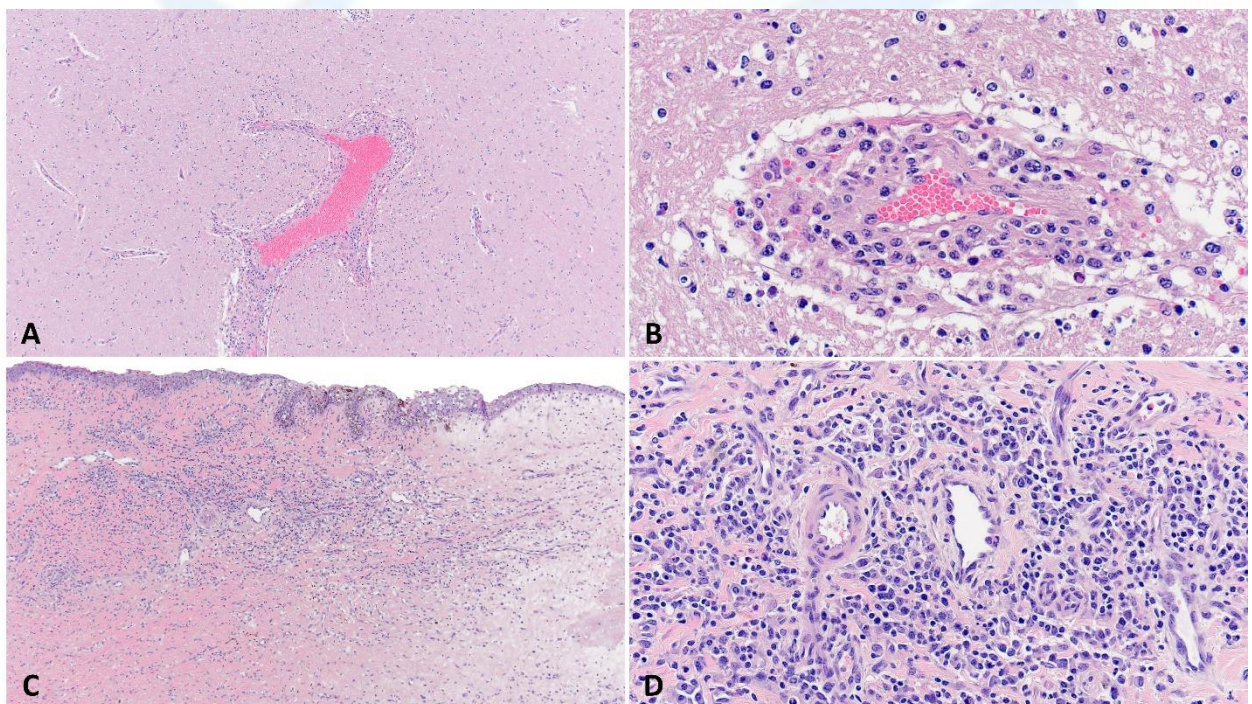


Figure 3. Hematoxylin-eosin, 10× (A, C), 40× (D), and 60× (B)

Follow-up questions:

- *Histologic description*
- *Morphologic diagnoses*
- *Name the disease*
- *Etiology*

*The Diagnostic Exercises are an initiative of the Latin Comparative Pathology Group (LCPG), the Latin American subdivision of The Davis-Thompson Foundation. These exercises are contributed by members and non-members from any country of residence. Consider submitting an exercise! A final document containing this material with answers and a brief discussion will be posted on the CL Davis website (<https://davisthompsonfoundation.org/diagnostic-exercise/>).

Editor-in-chief: Claudio Barros

Associate Editor for this Diagnostic Exercise: Francisco Uzal