



DIAGNOSTIC EXERCISE

From The Davis-Thompson Foundation*

Case #: **243**; Month: **August**; Year: **2024**
Question sheet

Contributors: Kristen Shekelle & Brian Porter.

College of Veterinary Medicine and Biomedical Sciences, Department of Veterinary Pathobiology, Texas A&M University.

Corresponding author: bporter@cvm.tamu.edu

History: A 7-year-old pony gelding was submitted for necropsy with a history of inability to stand for two days after his head was caught in a tree. On presentation, he was laterally recumbent with dilated pupils and absent pupillary light reflexes (PLRs), intermittent horizontal nystagmus, absent facial sensation, and an absent panniculus reflex along the neck and cranial thorax. He had delayed withdrawal reflexes in the front limbs. His vaccination history was unknown, and he was euthanized for poor prognosis and concern for rabies.

Necropsy findings: The left side of the frontal bone had a complete, 12 cm, semi-circle fracture, and the underlying cerebrum had a large area of hemorrhage and necrosis. The 12th and 13th right ribs and 7th, 8th, and 9th left ribs had complete, mid-diaphyseal fractures with surrounding hemorrhage. The nuchal ligament had a cavitated, 17.5x4.5x3.5 cm pocket that contained a moderate amount of yellow fluid and soft, friable, pale tan caseous material (Figs 1 and 2). Samples of the ligament (Figs 3-6) were collected for histopathology.

Gross and Histological Images:



Figure 1

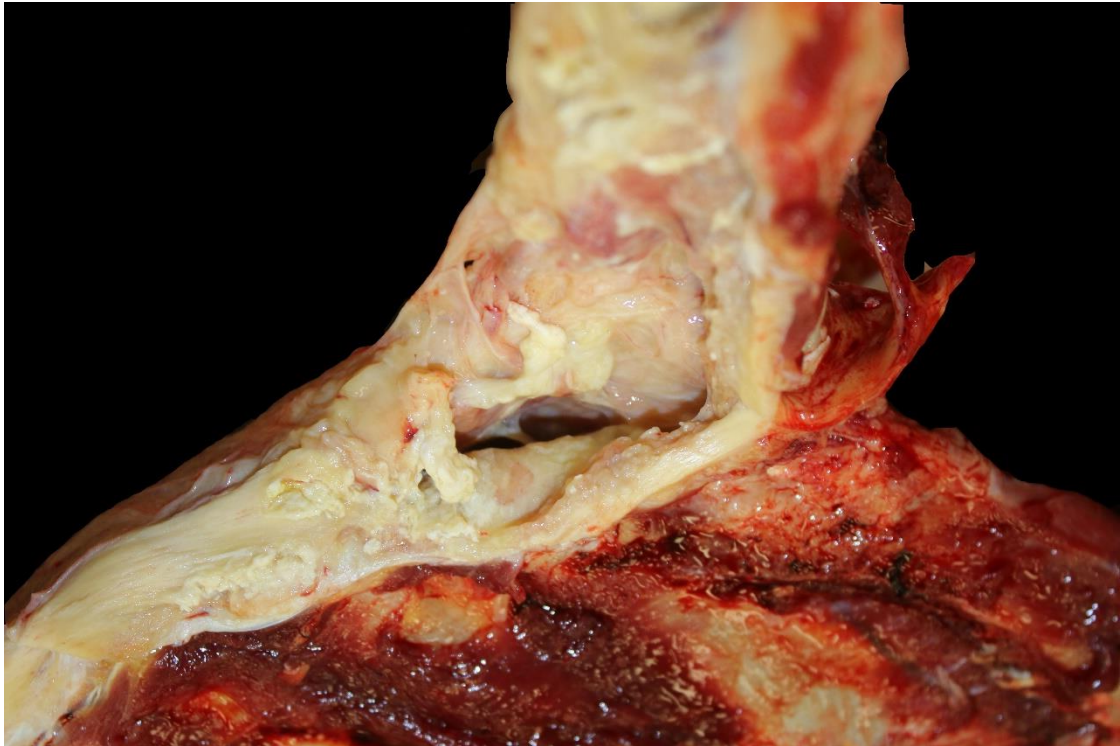


Figure 2

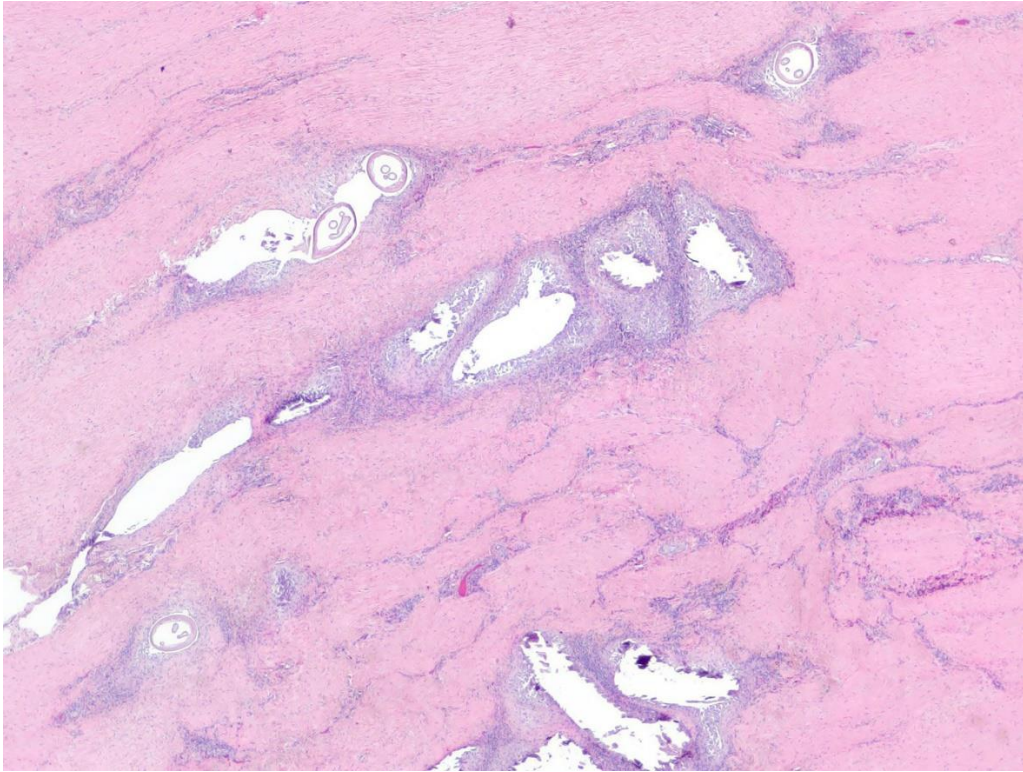


Figure 3: H&E

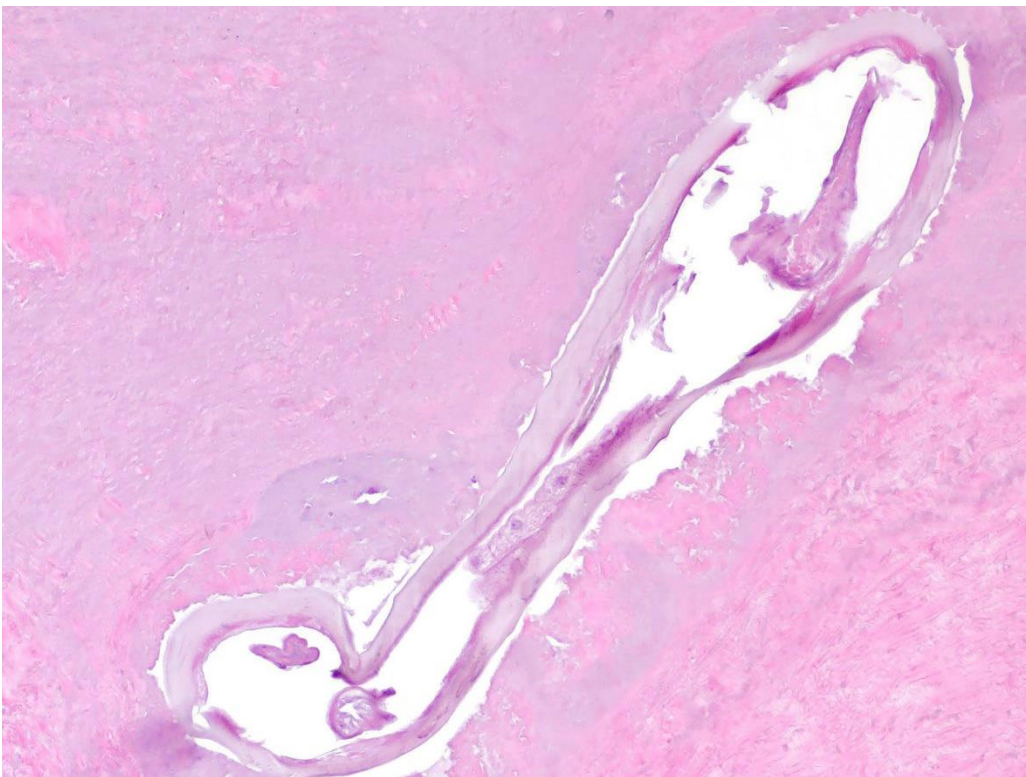


Figure 4: H&E

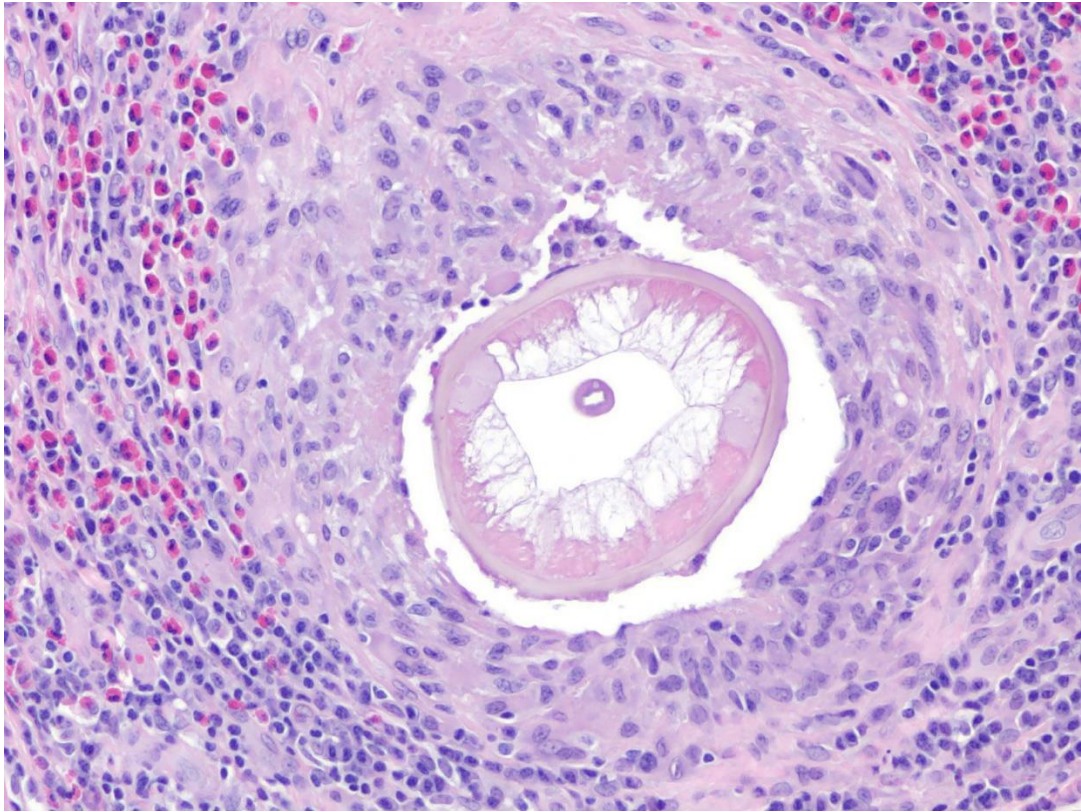


Figure 5: H&E

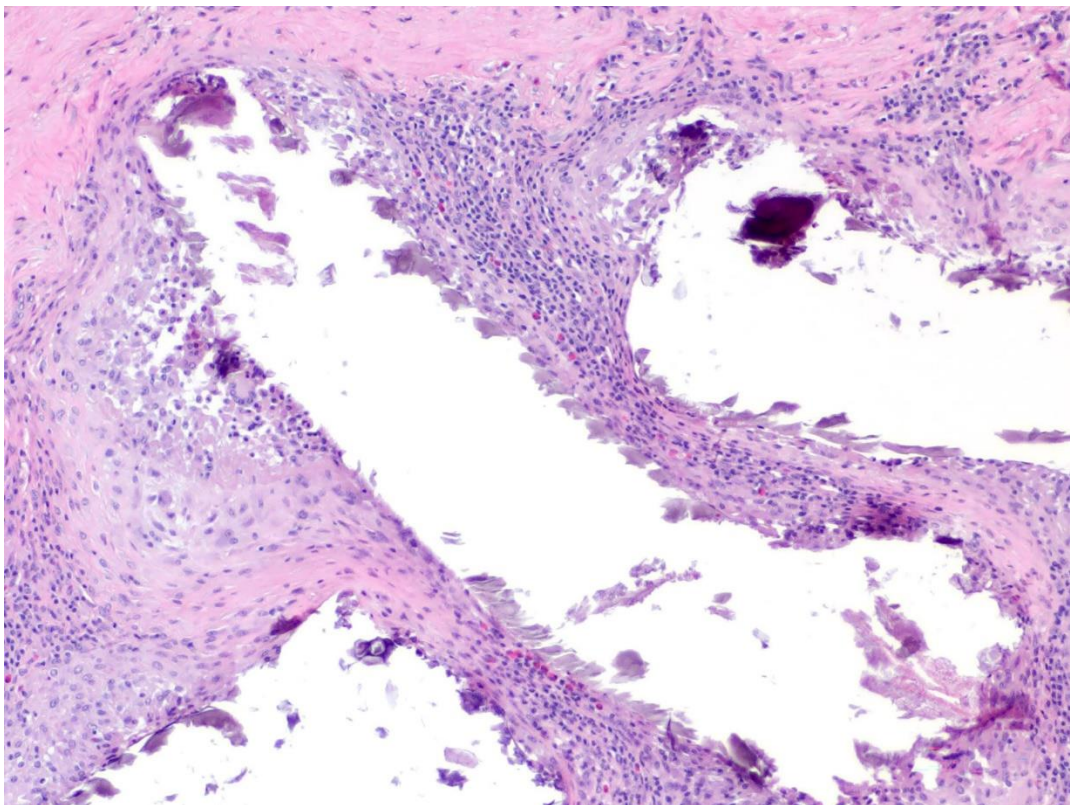


Figure 6: H&E

Follow-up questions:

- Morphologic diagnosis:
- Etiology:
- Intermediate host:

*The Diagnostic Exercises are an initiative of the Latin Comparative Pathology Group (LCPG), the Latin American subdivision of The Davis-Thompson Foundation (DTF). These exercises are contributed by members and non-members from any country of residence. Consider submitting an exercise! A final document containing this material with answers and a brief discussion will be posted on the DTF website.

(<https://davisthompsonfoundation.org/diagnostic-exercise/>)

Associate Editor for this Diagnostic Exercise: Raquel Rech.

Editor-in-chief: Claudio Barros