

# CVM Position Announcement

## NEW FACULTY POSITION IN VETERINARY PATHOLOGY

The College of Veterinary Medicine at Iowa State University (Ames, Iowa) welcomes applications for a tenure-track or clinical-track faculty position in Veterinary Anatomic Pathology.

This is a position designed with the flexibility to maximize work-life balance and involves all the benefits of academics such as modern facilities, access to a broad complement of clinical specialists, resident training, and student interaction but also allows for ample time off for personal endeavors. Compensation is competitive, with the added bonus of exceptional university benefits.

Are you interested in joining an established team of healthcare professionals who are committed to providing exceptional patient care, share an enthusiastic dedication to training the next generation of veterinarians and veterinary pathologists and researchers? If so, we'd like to hear from you!

As a member of the Department of Veterinary Pathology, you will be joining an existing team of board-certified anatomic and clinical pathologists and laboratory professionals with decades of combined experience. We also have robust residency and graduate programs. The Department of Veterinary Pathology is composed of a dynamic group of faculty dedicated to providing excellent diagnostic pathology services, training the next generation of veterinarians and advancing the field of veterinary pathology.

The Department of Veterinary Pathology has focus areas in anatomic pathology, clinical pathology and parasitology. The department emphasizes training for board certification by the American College of Veterinary Pathologists or the American College of Veterinary Microbiologists (parasitology), and graduate education (combined Residency/MS or PhD). Veterinary Pathology faculty link basic and clinical science through essential roles in teaching students (undergraduate, veterinary and graduate) and veterinarians; diagnosis and reporting of diseases; and scientific research, including infectious and emerging diseases, parasitic diseases of local and global impact, animal models of human disease, and diseases of high consequence to animal and human health through integrated education, diagnostics and



research. Faculty frequently collaborate with colleagues at the USDA National Animal Disease Center and National Veterinary Services Laboratory, also located in Ames. In addition, the department provides pathology support services to researchers both within and external to Iowa State University.

As the nation's first public veterinary school, Iowa State University's College of Veterinary Medicine takes pride in its heritage while shaping the future of veterinary professional practice, education, research and service.

### GENEROUS BENEFITS PACKAGE

- 10 percent matching on retirement contributions
- Earn up to 18 days of sick leave and 24 days of vacation per year
- 11 paid holidays
- Health, dental, vision, disability, and life insurance packages
- Consulting days
- Flexible work-life balance schedules

*And more ... [www.hr.iastate.edu/benefits](http://www.hr.iastate.edu/benefits)*

Iowa State University is a global and culturally diverse university committed to providing an inclusive, equitable, and diverse environment for both learning and employment. We know that diversity in experience and perspective is vital to advancing innovation, critical thinking, solving complex problems, and building an inclusive academic community. At Iowa State, we translate these values into action by seeking individuals who have experience working with diverse students, colleagues, and constituents. The university has an expectation that all employees will demonstrate a contribution to diversity and inclusion as embodied in Iowa State University's Principles of Community.

## AMES, IOWA

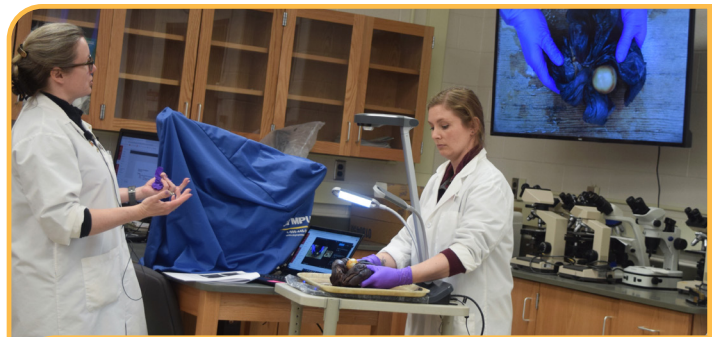
Ames is a progressive community of 60,000, located 30 minutes north of Des Moines. Beneath the small-town charm of Ames, Iowa, beats the heart of a much larger city. A city that has become a player in developing the world's bio-economic future. A city with top-quality education, from kindergarten to graduate school. A city that regularly draws well-known bands, as well as emerging superstars, international symphonies and Broadway musicals.

A city with hundreds of acres of parks, 35 miles of bike trails, and cultural festivals and celebrations.

## HOW AMES RANKS

### Best College Town Rankings

- No. 1: Wall Street, 2020
- No. 3: Business Insider, 2016
- No. 1: Livability.com, 2014
- No. 5: Best College Reviews, 2017
- No. 2: American institute for Economic Research, 2013-2014



## BY THE NUMBERS

- **6 ACVP boarded anatomic pathologists**
- **Robust caseload (5-6k surgical biopsies, 500-600 necropsy cases annually)**
- **Histopathology laboratory with 3 full-time histo-technologists**
- **Full-time necropsy technician**
- **4 ACVP boarded clinical pathologists**
- **Clinical pathology laboratory with 4 full-time medical technologists**
- **Updated necropsy floor and rounds room with interactive flat screen technology**
- **Updated anatomic and clinical pathology teaching laboratories**

### Other Rankings

- 3rd Healthiest City in America, 24/7 Wall Street, 2016
- 8th Among Best Places (Small Cities) to live in, Money, 2014
- Top 15 cities for people who hate long commutes, U.S. News & World Report, 2009
- U.S. City with the Lowest Unemployment Rate (2.2%), Forbes, 2016
- Ranked No. 7 on the list of The Happiest Small Places in America, Movoto, 2014

## MORE INFORMATION

For more information on available positions at the College of Veterinary Medicine, or to apply, please visit the following website: **Apply: [jobs.iastate.edu](http://jobs.iastate.edu) Position: R5512**

*Iowa State University is an Equal Opportunity/Affirmative Action employer. All qualified applicants will receive consideration for employment without regard to race, color, religion, sex, national origin, disability, or protected Veteran status and will not be discriminated against.*