



Diagnostic Exercise

From The Davis-Thompson Foundation*

Case # **238**; Month **June**; Year: **2024**

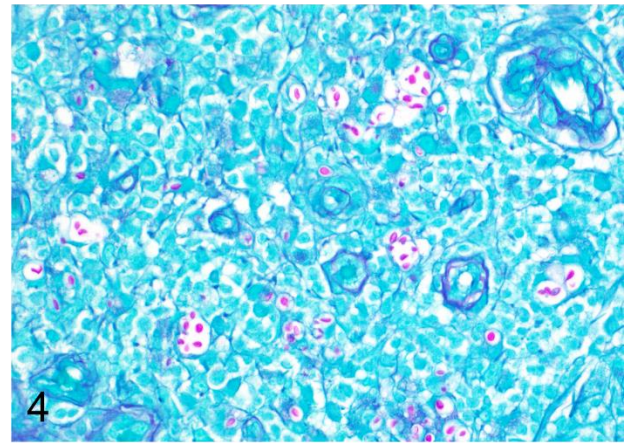
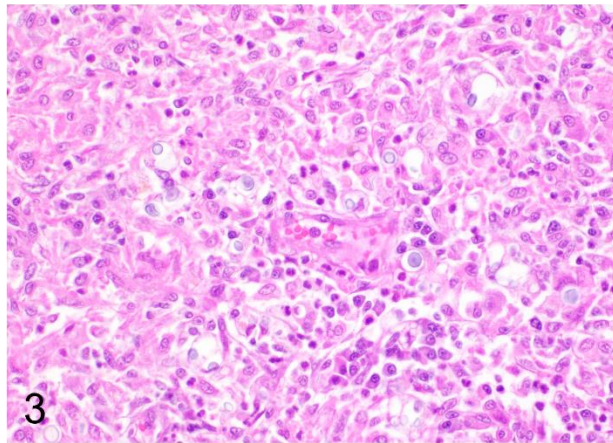
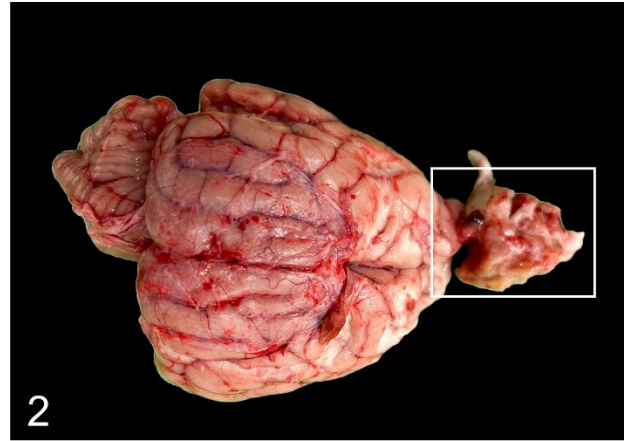
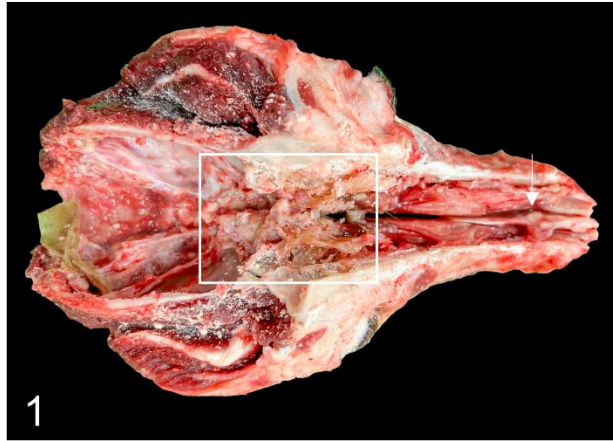
Question Sheet

Contributors: Katherine E. Gingrich and Francisco R. Carvallo.
Department of Biomedical Sciences and Pathobiology, Virginia-Maryland College of Veterinary Medicine, Blacksburg, VA.

Corresponding author: fcarvallo@vt.edu

History: A 17.8 kg female, spayed, German Shorthaired Pointer with a month-long history of waxing and waning lethargy and obtunded mentation. The patient was treated initially with Doxycycline and Temaril-P and later with Prednisone. The patient's clinical signs were worse when the Prednisone was tapered. There were concerns for multifocal brain and brainstem disease based on physical exam, and because of financial constraints, euthanasia was elected.

Necropsy findings: In the caudal nasal cavity, there was an approximately 2.5 cm diameter, tan, multinodular, irregular mass compressing the turbinates, perforating through the cribriform plate and extending into the meninges and olfactory bulb of the brain (Fig. 1 and 2). The neuroparenchyma of the left olfactory lobe was soft with multifocal hemorrhages. The cerebellum was slightly herniated through the foramen magnum. In addition, there were multifocal tan nodules approximately 2-3 mm in diameter in the rostral left nasal cavity bordering the nasal septum (Figure 1, arrow). Samples of the nasal septum, caudal nasal cavity, meninges and frontal aspect of the olfactory lobe were collected for histopathology (Figure 3 and 4).



Follow-up questions:

- *Morphologic diagnosis:*
- *Etiology:*
- *Name the disease:*

*The Diagnostic Exercises are an initiative of the Latin Comparative Pathology Group (LCPG), the Latin American subdivision of The Davis-Thompson Foundation (DTF). These exercises are contributed by members and non-members from any country of residence. Consider submitting an exercise! A final document containing this material with answers and a brief discussion will be posted on the DTF website.

(<https://davisthompsonfoundation.org/diagnostic-exercise/>)

Associate Editor for this Diagnostic Exercise: Francisco Carvallo
Editor-in-chief: Claudio Barros