

# Diagnostic Exercise

## From The Davis-Thompson Foundation\*

Case #269; Month **September**; Year: **2025**  
*Question sheet*

**Contributors:** Carolina Matto<sup>1</sup>, Carmina Migoni<sup>2</sup>, Michelle Rubio<sup>3</sup>, Akinyi Nyaoke<sup>4</sup>, Eileen Henderson<sup>4</sup>, Francisco A. Uzal<sup>4</sup>, Javier Asin<sup>4\*</sup>

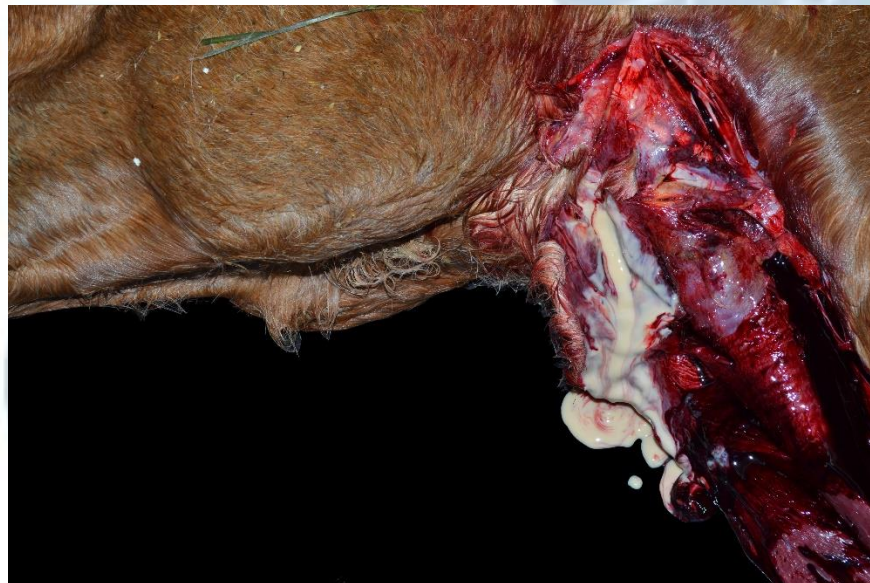
<sup>1</sup>Laboratorio Regional Noroeste, DILAVE "Miguel C. Rubino", Paysandú, Uruguay.

<sup>2</sup>Instituto de Investigaciones en Ciencias Veterinarias, Universidad Autónoma de Baja California, México. <sup>3</sup>Facultad de Medicina Veterinaria y Zootecnia, Universidad Nacional Autónoma de México, México. <sup>4</sup>California Animal Health and Food Safety Laboratory system, San Bernardino branch, University of California-Davis.

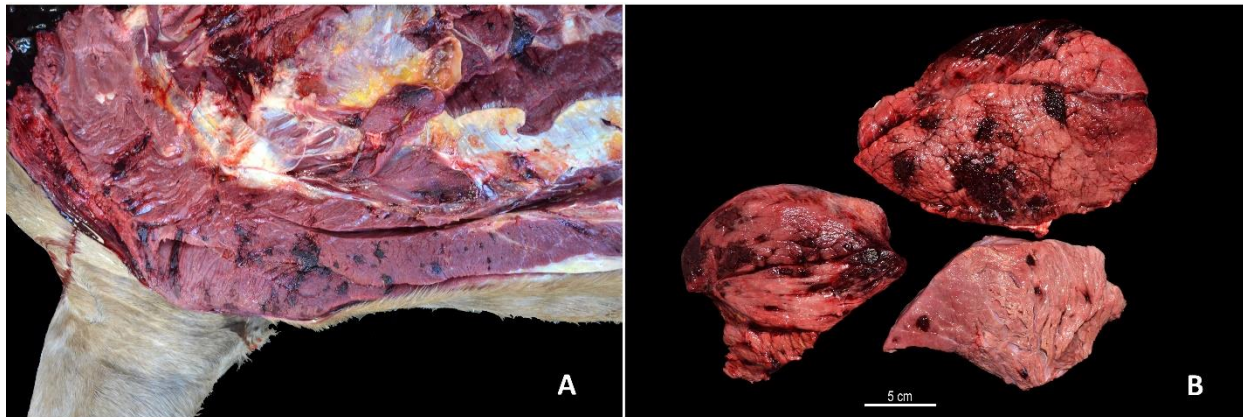
**\*Corresponding author:** [jasinros@ucdavis.edu](mailto:jasinros@ucdavis.edu)

**History:** A euthanized 23-year-old Quarter Horse gelding with an ~1-week history of fever (102.5°F), clear nasal discharge and lymphadenopathy was euthanized.

**Necropsy findings:** Externally, the ventral aspect of the neck at the level of the larynx was swollen. In this area, there was an ~20 cm diameter abscess that effaced the left retropharyngeal and submandibular lymph nodes, and extended towards the adjacent parotid gland through multifocal draining tracts. The abscess contained thick light green pus and was lined by a thick fibrous capsule (Fig. 1). Multifocally, within the subcutis and most skeletal muscles, there were coalescing and dissecting hemorrhages. These changes were most severe in the pectoral, longissimus dorsi and thigh muscles, where there was also subcutaneous and intramuscular edema (Fig. 2).



**Figure 1**



**Figure 2**

Follow-up questions:

- *Morphologic diagnoses:*
- *Etiology:*
- *Name of the conditions:*
- *Pathogenesis:*

\*The Diagnostic Exercises are an initiative of the Latin Comparative Pathology Group (LCPG), the Latin American subdivision of The Davis-Thompson Foundation (DTF). These exercises are contributed by members and non-members from any country of residence. Consider submitting an exercise! A final document containing this material with answers and a brief discussion will be posted on the DTF website.

(<https://davisthompsonfoundation.org/diagnostic-exercise/>)

**Associate Editor for this Diagnostic Exercise:** Francisco A. Uzal

**Editor-in-chief:** Claudio Barros