

Diagnostic Exercise

From The Davis-Thompson Foundation*

Case #: **161** Month: **March** Year: **2021**

Contributor: Fraser Hill (BVSc, MANZCVSc, FANZCVSc (Anatomic Pathology)), CityU Veterinary Diagnostic Laboratory, Kowloon Tong, Hong Kong.

Clinical History: Two-year-old, female spayed rabbit with a six-month history of phacoclastic uveitis. Treatment with anthelmintics and antibiotics had been ineffective, so enucleation was performed and the eye submitted for histopathology.

Microscopic Images:

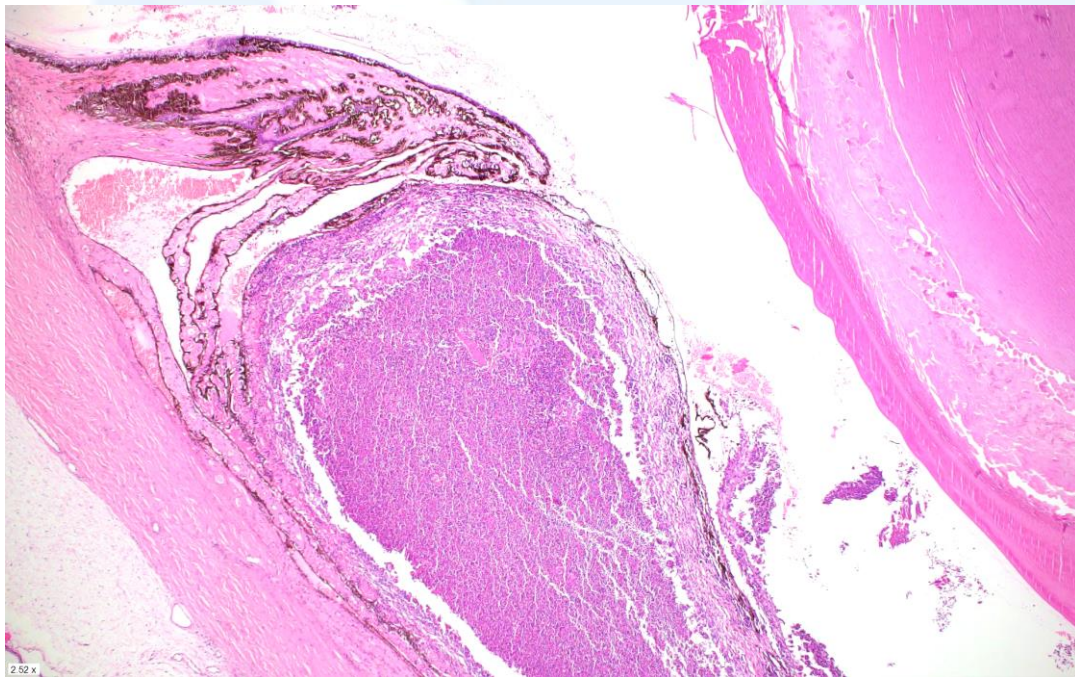


Figure 1. Haematoxylin and Eosin (40 x)

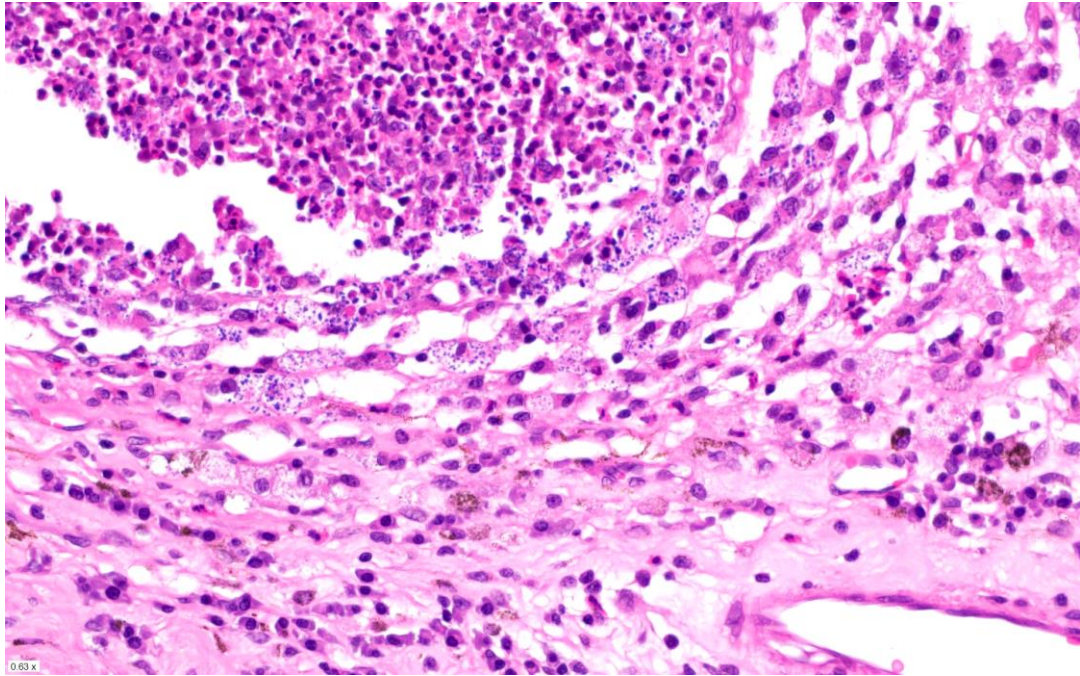


Figure 2. Haematoxylin and Eosin (400x)

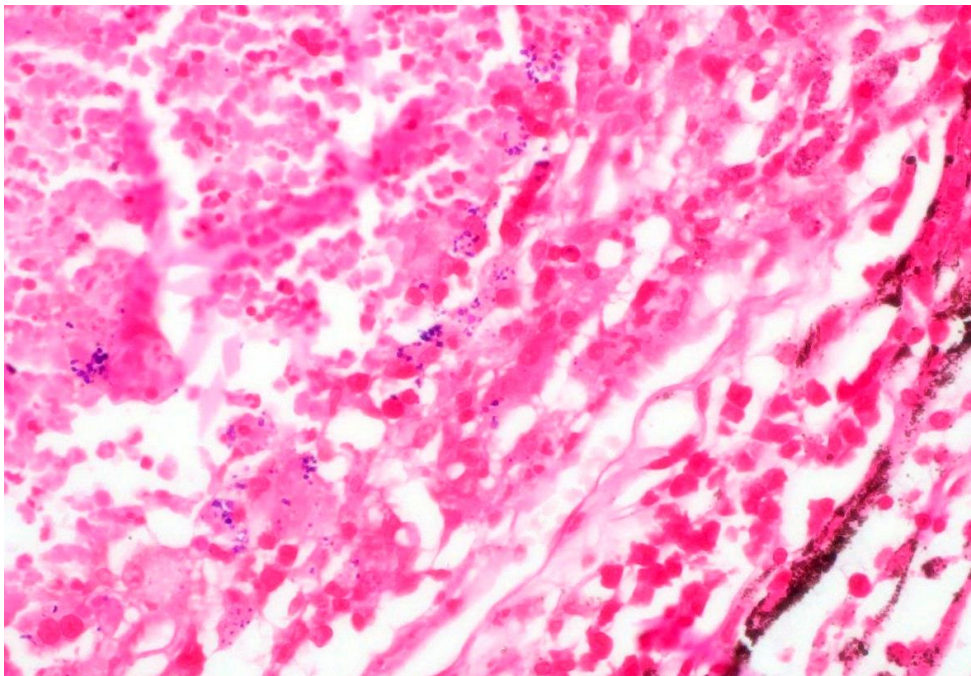


Figure 3: Gram stain (400x)

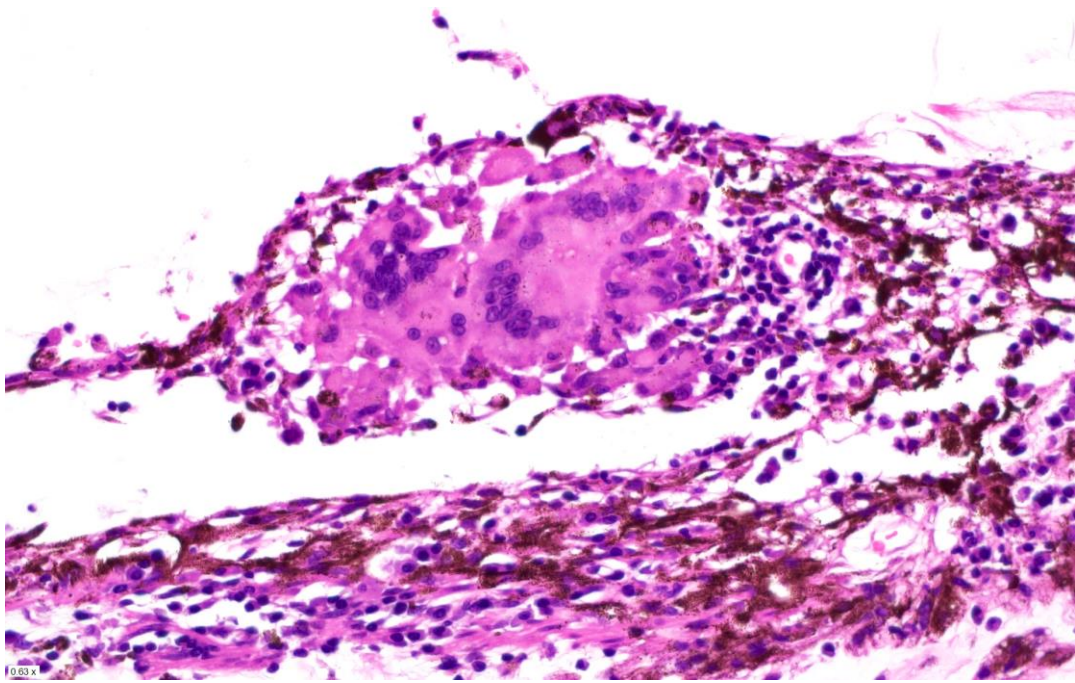


Figure 4. Haematoxylin and Eosin (400x)

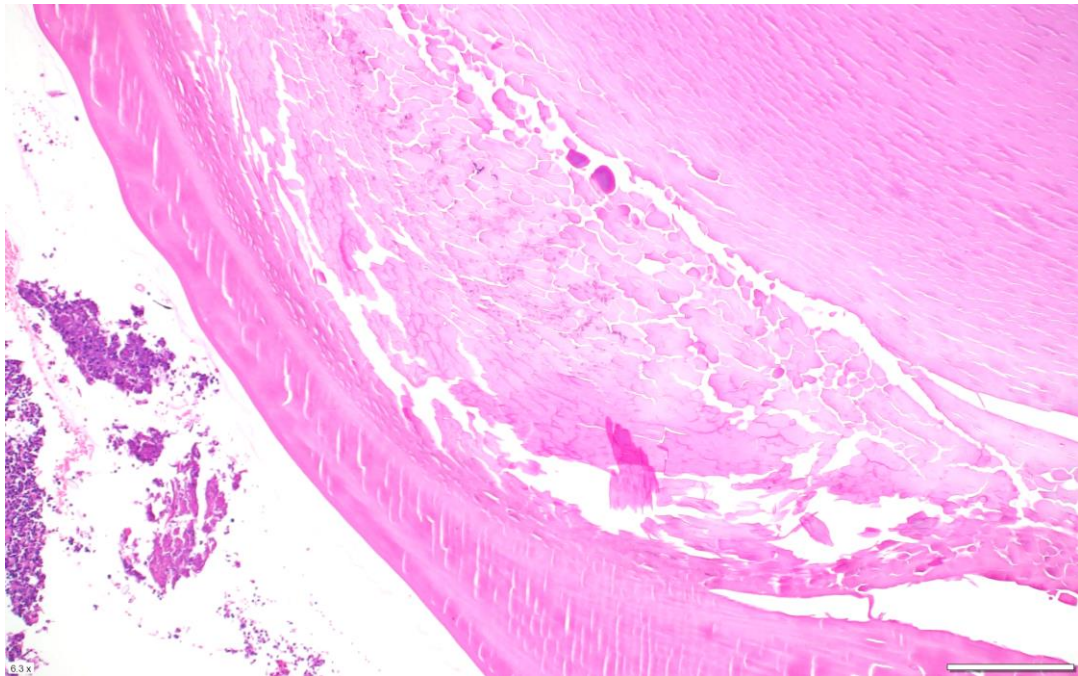


Figure 5. Haematoxylin and Eosin (100x)

Follow-Up Questions: Morphologic diagnosis, aetiology

*The Diagnostic Exercises are an initiative of the **Latin Comparative Pathology Group (LCPG)**, the Latin American subdivision of The Davis-Thompson Foundation. These exercises are contributed by members and non-members from any country of residence. Consider submitting an exercise! A final document containing this material with answers and a brief discussion will be posted on the CL Davis website (http://www.cldavis.org/diagnostic_exercises.html).

Associate Editor for this Diagnostic Exercise: Ingeborg Langohr
Editor-in-chief: Claudio Barros