



Diagnostic Exercise

From The Davis-Thompson Foundation*

Question sheet

Case #: **198**; Month: **October**; Year: **2022**

Contributors: Fábio S. Mendonça^{1,2} DVM, MSc, PhD, Givaldo B. Silva-Filho², DVM, MSc, PhD candidate and Francisco A. Uzal¹, DVM, MSc, PhD, DACVP. ¹California Animal Health and Food Safety Laboratory System, San Bernardino Branch, University of California-Davis, San Bernardino, CA, USA. ²Laboratory of Animal Diagnosis, Federal Rural University of Pernambuco, Recife, PE, Brazil.

fauzal@UCDAVIS.EDU

Clinical history: A technical visit to a goat farm was requested because two does and four kids had been presenting severe skin lesions. One week before, 2 kids died presenting similar lesions.

Clinical findings: During the visit to the farm, several does had lesions in the skin of the udder and teats (Figs. 1A and B), while most kids had lesions in skin of the lips (Figs. 1A and 2A), muzzle, eyelids, ears, and around the eyes (Fig. 2B). In most animals, the lesions consisted of irregular to round, multifocal to coalescing brown to black crusts, measuring between 0.5 cm and 4 cm diameter. In one dam, the lesions consisted of multifocal round areas of erythema and ulcers, measuring 0.3 cm to 0.5 cm. These ulcers had clear and depressed centers, which were surrounded by elevated brown to black crusts (Fig. 1A and 1B).

Necropsy findings: Four days after the visit to the farm, two kids died and were necropsied. Gross lesions in the skin were like those described above under clinical findings. No additional significant gross abnormalities were observed in either kid. Samples from the skin of udder and lip of the kids were collected and routinely processed for histopathology. Microscopic images of HE-stained sections from lips are shown in Figs. 3 and 4.

Gross images

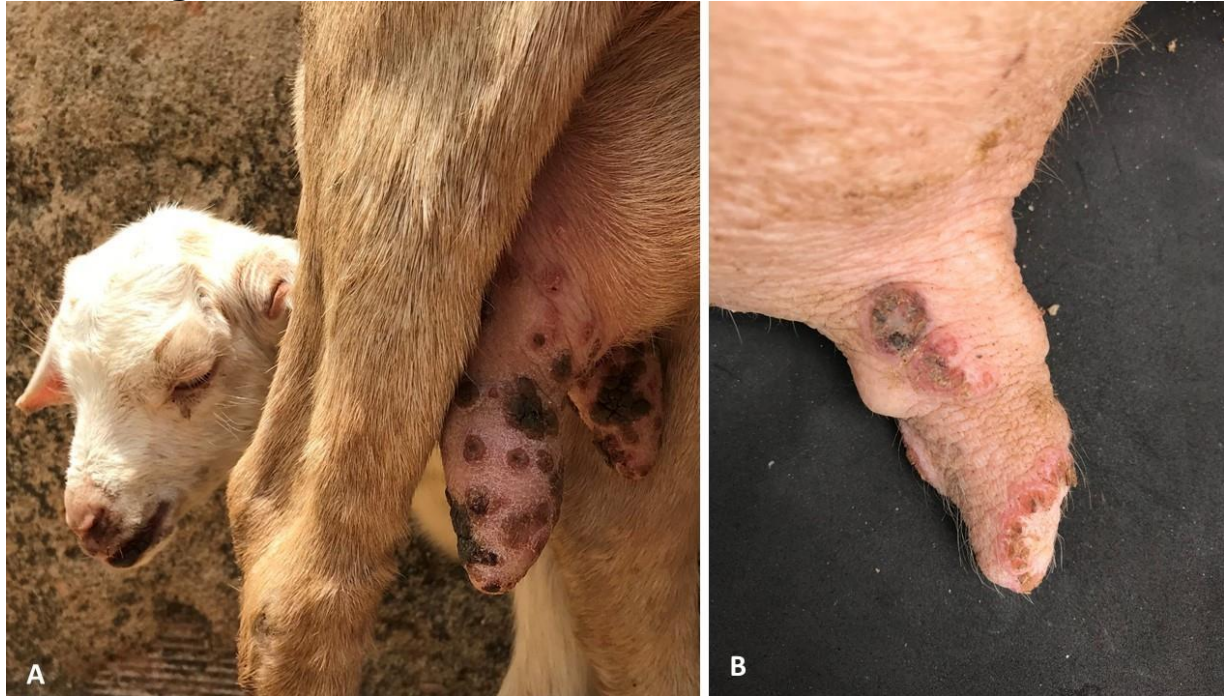


Figure 1.



Figure 2.

Microscopic Images:

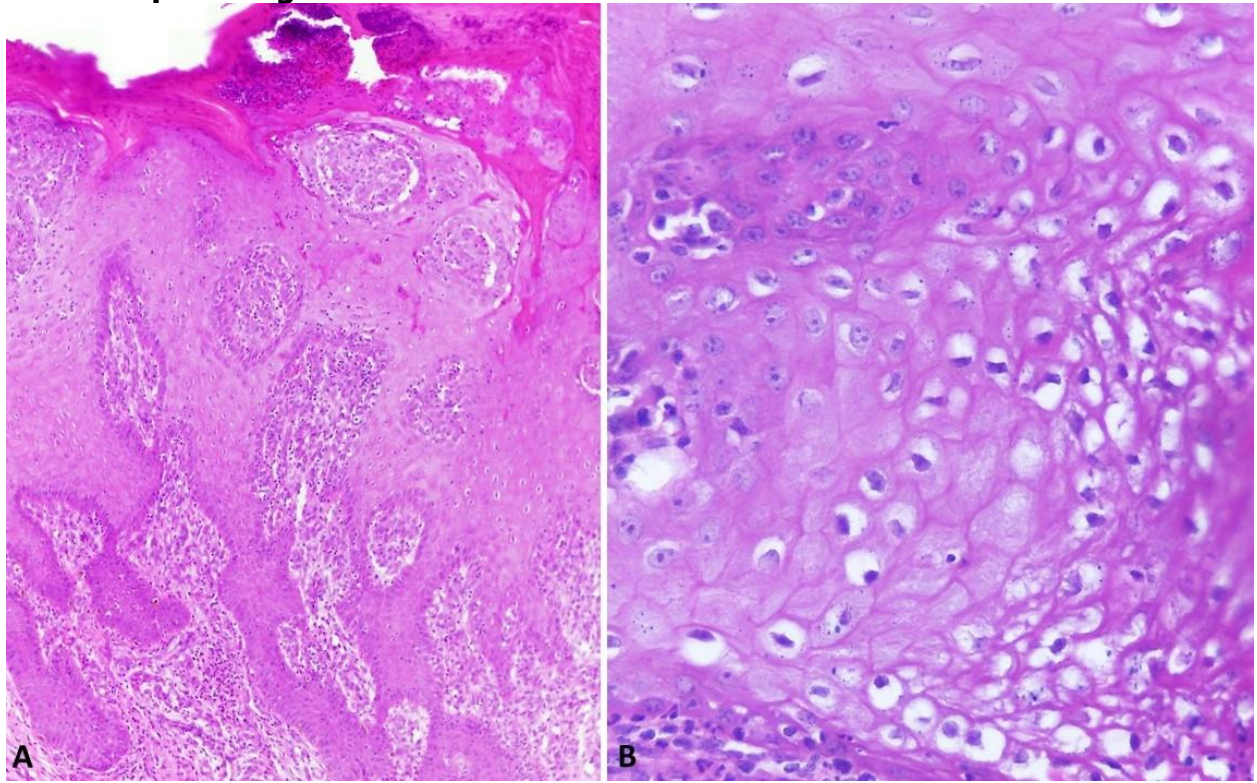


Figure 3.

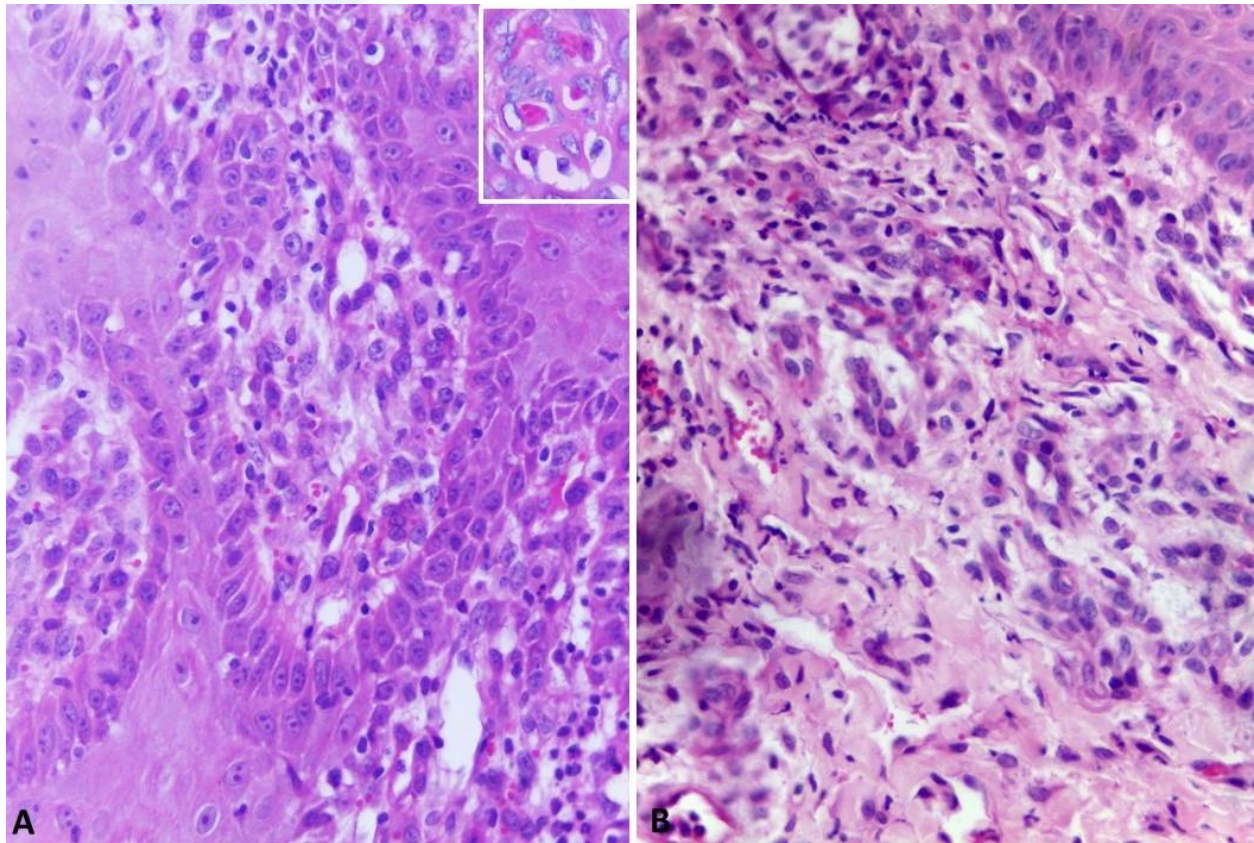


Figure 4.

Follow-up questions:

1. *Histologic description*
2. *Morphologic diagnosis*
3. *Cause*
4. *Pathogenesis*
5. *Five denominations for this condition*

*The Diagnostic Exercises are an initiative of the Latin Comparative Pathology Group (LCPG), the Latin American subdivision of The Davis-Thompson Foundation. These exercises are contributed by members and non-members from any country of residence. Consider submitting an exercise! A final document containing this material with answers and a brief discussion will be posted on the CL Davis website (<https://davisthompsonfoundation.org/diagnostic-exercise/>).

Associate Editor for this Diagnostic Exercise: Francisco Uzal

Editor-in-chief: Claudio Barros