



# Diagnostic Exercise

## From The Davis-Thompson Foundation\*

Case #261; Month: **May**; Year: **2025**

*Question sheet*

**Contributors:** Fabricio Moreira<sup>1</sup>, Milena Carolina Paz<sup>1</sup>, Fernando Octavio Mascarenhas Ladeira<sup>1</sup>, Ana Lucia Schild<sup>1</sup> and Claudio Barros<sup>2</sup>

<sup>1</sup>Laboratório Regional de Diagnóstico (LRD), Faculdade de Veterinária, Universidade Federal de Pelotas (UFPEL), Brazil.

<sup>2</sup>Laboratory of Anatomic Pathology, School of Veterinary Medicine and Animal Sciences, Federal University of Mato Grosso do Sul, Campo Grande, MS, Brazil.

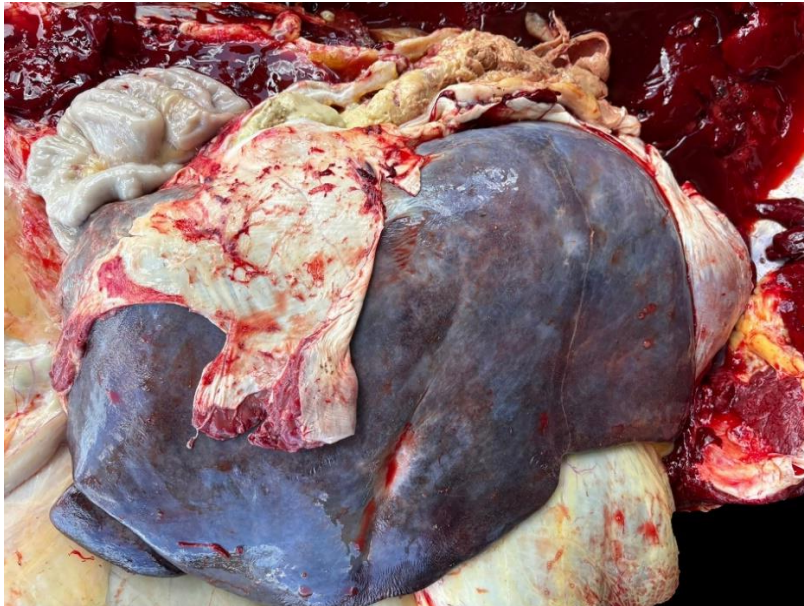
**Corresponding author:** [alschild@terra.com.br](mailto:alschild@terra.com.br)

**Clinical History:** A 2-year-old heifer from a herd of approximately 300 Angus crossbred heifers kept at range was evaluated because of a 3-day history of hemoptysis (Fig. 1). The cow stopped eating and spent long periods standing in a pond away from the herd. Anti-inflammatory and antibiotic treatment was initiated with no avail. The heifer was euthanized and autopsied on the fourth day after the onset of clinical signs.

**Autopsy:** The liver was slightly enlarged with an irregular surface. Small abscesses were distributed in the hepatic parenchyma (Fig. 2); on the cut surface, dark areas alternating with light foci (nutmeg liver) were distributed throughout (Fig. 3). The caval vein, at its insertion into the liver, was distended, firm, and markedly obstructed by compact, yellow material (pus and fibrin) (Fig. 4). The vein wall was thickened due to fibrosis. The lungs had nodular and coalescing, dark red areas predominantly in the caudal lobes (Fig. 5); on the cut surface, these areas were dark red (hematomas) and were accompanied by small nodular areas containing pus (abscesses) (Fig. 6). The interlobular septa were distended by translucent, gelatinous material; in the trachea, there was a moderate amount of brown, viscous content. There was no bacterial growth on culture with agar blood and MacConkey medium.



**Figure 1.** Clinical signs. hemoptysis



**Figure 2.** Liver

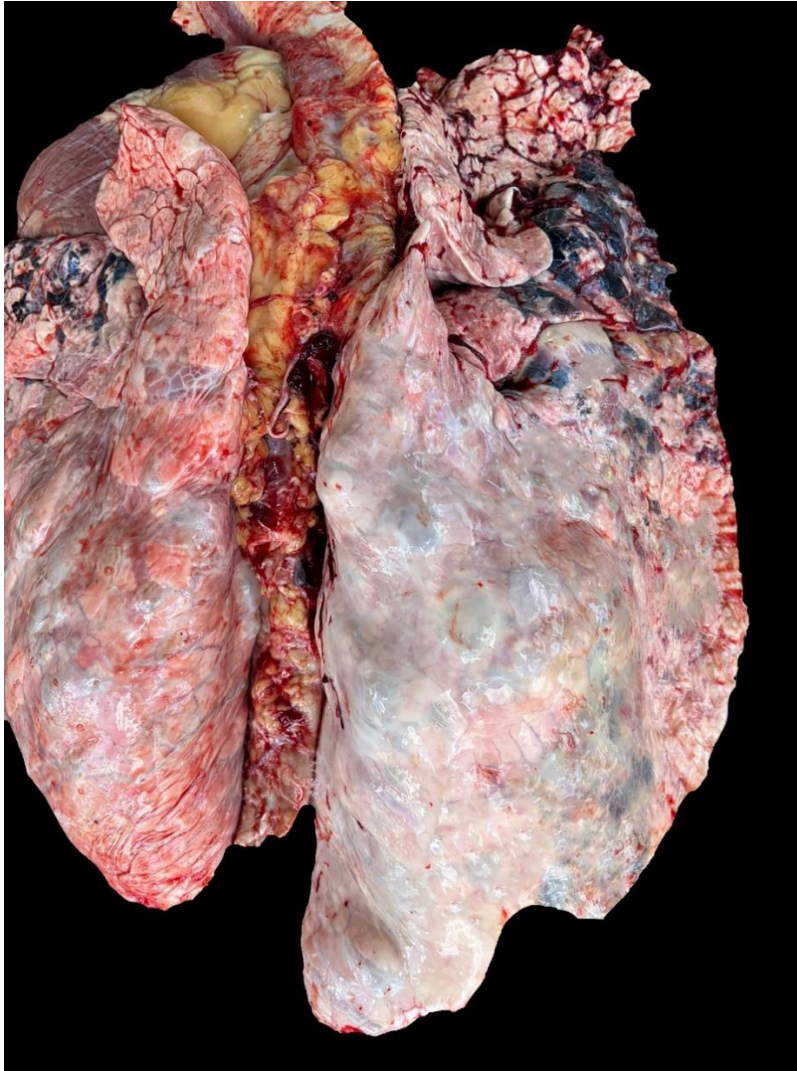


**Figure 3.** Nutmeg liver



**Figure 4.** Caudal vena cava





**Fig. 5.** Lung



**Fig. 5.** Lung, cut surface

**Follow Up Questions:**

- *Morphologic diagnosis?*
- *Name of the condition?*

\*The Diagnostic Exercises are an initiative of the Latin Comparative Pathology Group (LCPG), the Latin American subdivision of The Davis-Thompson Foundation (DTF). These exercises are contributed by members and non-members from any country of residence. Consider submitting an exercise! A final document containing this material with answers and a brief discussion will be posted on the DTF website (<https://davisthompsonfoundation.org/diagnostic-exercise/>).

**Editor for this Diagnostic Exercise:** Daniel Rissi

**Editor-in-chief:** Claudio Barros