



# Diagnostic Exercise

## From The Davis-Thompson Foundation\*

Case #246; Month: **October**; Year: **2024**

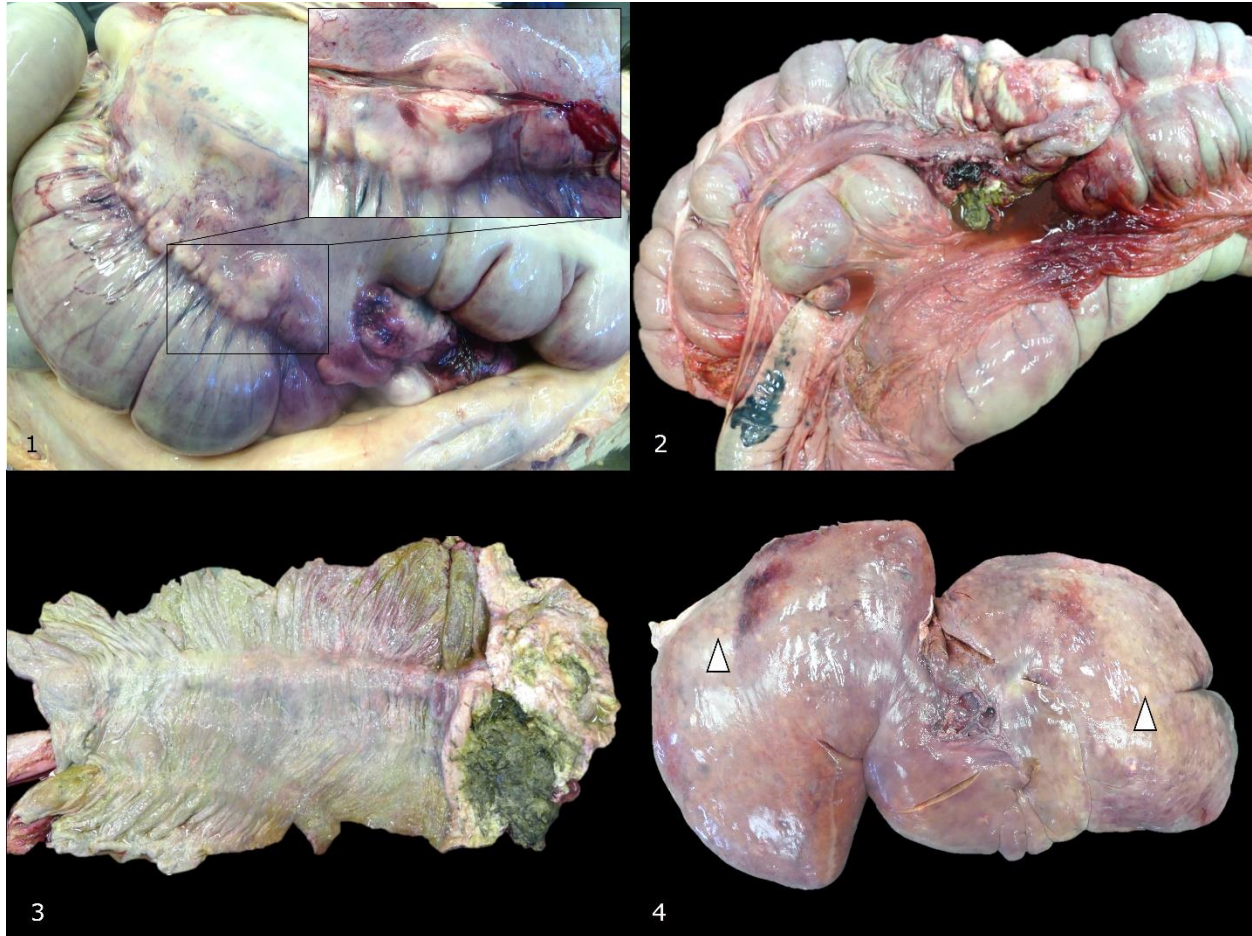
### *Question sheet*

**Contributors:** Agustín Rebollada-Merino and Gavin R. Hitchener.  
Department of Population Medicine and Diagnostic Sciences, Section of Anatomic Pathology, College of Veterinary Medicine, Cornell University.

**Corresponding author:** [amr449@cornell.edu](mailto:amr449@cornell.edu)

**History:** A 17-year-old castrated, paint horse was presented to the Cornell University Hospital for Animals with history of fever, progressive weight loss and subcutaneous edema on sheath and abdomen. A blood work showed mild neutropenia, hypoalbuminemia and elevated liver enzymes. Due to the worsening of the general condition the owners elected euthanasia, and the body was submitted to the Cornell Animal Health Diagnostic Center for necropsy.

**Necropsy findings:** Examined is an adult castrated paint horse, in reduced body condition (Henneke body condition score of 4 out of 9) with mild autolysis. Upon opening of the abdominal cavity is enlargement of cecal and colonic lymph nodes (Fig. 1), which on section are diffusely white and bulge. The apex of the cecum is markedly expanded by an irregular, approximately 25 x 15 cm, white mass (Fig. 2) which is ulcerated (Fig. 2-3). The mass on the cecum apex is attached to the diaphragmatic flexure of the colon (not shown). The ileal serosa has a locally-extensive, irregular, well-demarcated, slightly raised black area (Fig. 2). The liver is diffusely enlarged, pale brown to tan, and contains dozens of nodular, 3-4 cm, poorly demarcated, white nodules (Fig. 4). On section these nodules bulge and are diffusely tan to white. The hepatic parenchyma is diffusely friable. The renal cortex has dozens of pinpoint, tan to white, foci surrounded by a red halo that slightly bulge on section. A longitudinal section of the left femur reveals partial replacement of the bone marrow by adipose tissue.



Follow-up questions:

- *Morphologic diagnoses:*
- *Expected histopathology:*
- *Useful immunohistochemistry (2):*

\*The Diagnostic Exercises are an initiative of the Latin Comparative Pathology Group (LCPG), the Latin American subdivision of The Davis-Thompson Foundation (DTF). These exercises are contributed by members and non-members from any country of residence. Consider submitting an exercise! A final document containing this material with answers and a brief discussion will be posted on the DTF website.

(<https://davisthompsonfoundation.org/diagnostic-exercise/>)

**Associate Editor for this Diagnostic Exercise:** Saulo Pavarini  
**Editor-in-chief:** Claudio Barros