

DIAGNOSTIC EXERCISE

From The Davis-Thompson Foundation*

Case #: **244**; Month: **September**; Year: **2024**

Question Sheet

Contributors: Claudio S.L. Barros¹ and Daniel R. Rissi²

¹Laboratório de Anatomia Patológica, Universidade Federal de Mato Grosso do Sul, Campo Grande, MS, Brazil

²Athens Veterinary Diagnostic Laboratory, Department of Pathology, College of Veterinary Medicine, University of Georgia, Athens, GA

Corresponding author: claudiobarros1945@gmail.com

1

Clinical History: Chronic wasting occurred in sheep from a flock in southern Brazil (29° 32' 16" S 53° 51' 18" O) from October 2003 to January 2004. Of a total population at risk of 460 sheep, 43 were affected, 29 died spontaneously, and 10 were euthanized. Clinical signs included weight loss, cachexia, rigid walking, retracted abdomen, and kyphosis. In some cases, terminal pulmonary edema led to oozing of abundant white foam from the nasal and oral cavities.

Necropsy Findings. Twelve sheep were necropsied. The main gross lesions are depicted in Figures 1-5.

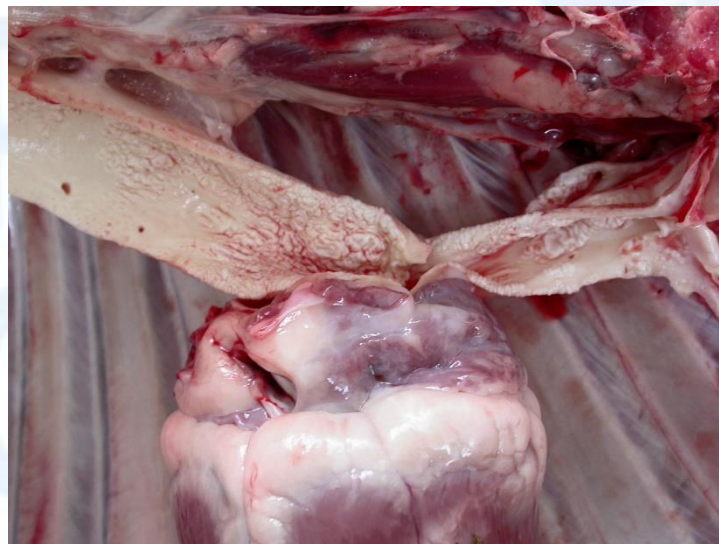


Figure 1.

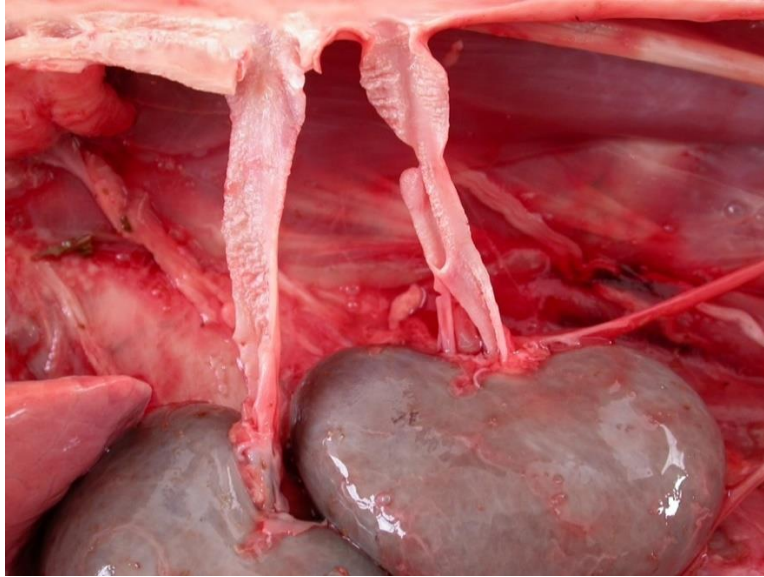


Figure 2



Figure 3

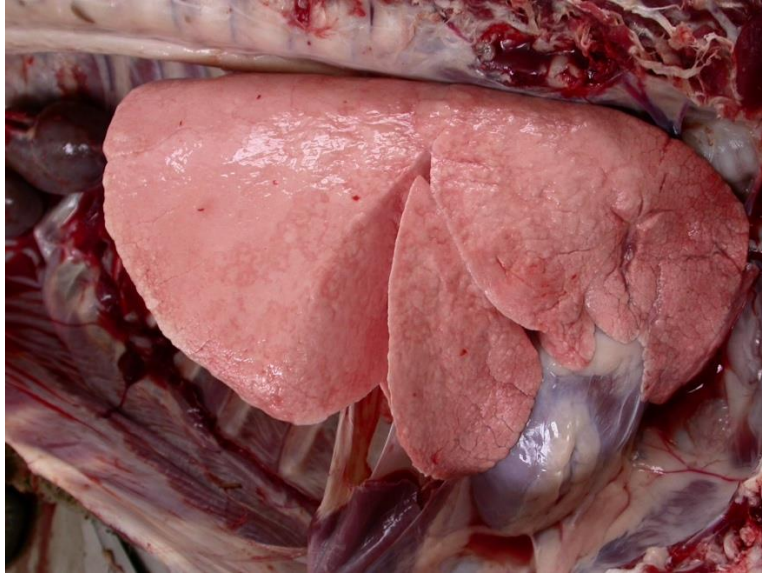


Figure 4

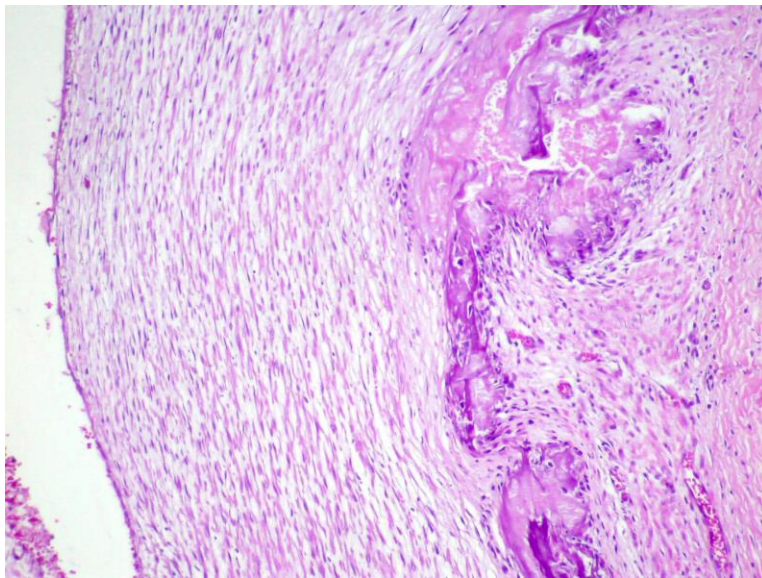


Figure 5

Follow-up Questions

- *Morphologic diagnosis:*
- *Cause:*
- *Name of the condition:*
- *Differentials:*

The Diagnostic Exercises are an initiative of the Latin Comparative Pathology Group (LCPG), the Latin American subdivision of The Davis-Thompson Foundation (DTF). These exercises are contributed by members and non-members from any country of

residence. Consider submitting an exercise! A final document containing this material with answers and a brief discussion will be posted on the DTF website (<https://davisthompsonfoundation.org/diagnostic-exercise/>)

Editor for this Diagnostic Exercise: Daniel Rissi

Editor-in-chief: Claudio Barros