



# Diagnostic Exercise

## From the CL Davis/SW Thompson Foundation

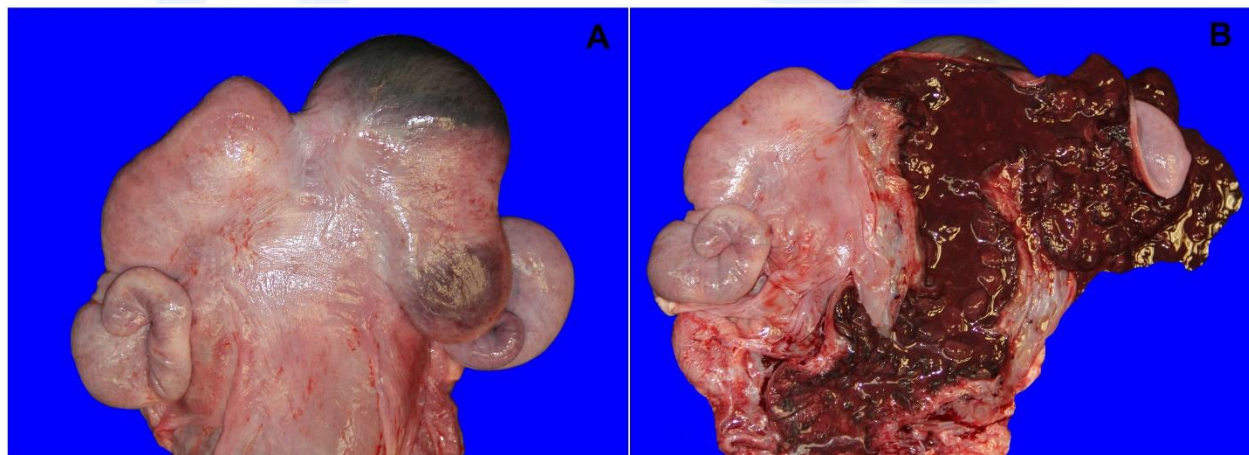
*Question sheet*

Case #: **228**; Month: **January**; Year: **2024**

**Contributors:** Caroline S. Silveira<sup>1</sup>, Melissa Macías-Rioseco<sup>2</sup>, Francisco A. Uzal<sup>3</sup>, (fauzal@ucdavis.edu). <sup>1</sup>Animal Health Research Platform, National Institute for Agriculture Research (INIA), La Estanzuela Experimental Station, Colonia, Uruguay. <sup>2</sup>California Animal Health and Food Safety Laboratory System, Tulare Branch, University of California-Davis, Tulare, CA, USA <sup>3</sup>California Animal Health and Food Safety Laboratory System, San Bernardino Branch, University of California-Davis, San Bernardino, CA, USA [mmaciasrioseco@ucdavis.edu](mailto:mmaciasrioseco@ucdavis.edu)

**Clinical history:** Two-year-old female goat with a 2-day history of fever, bloody vaginal discharge, and anorexia after kidding. Due to poor prognosis, euthanasia was elected.

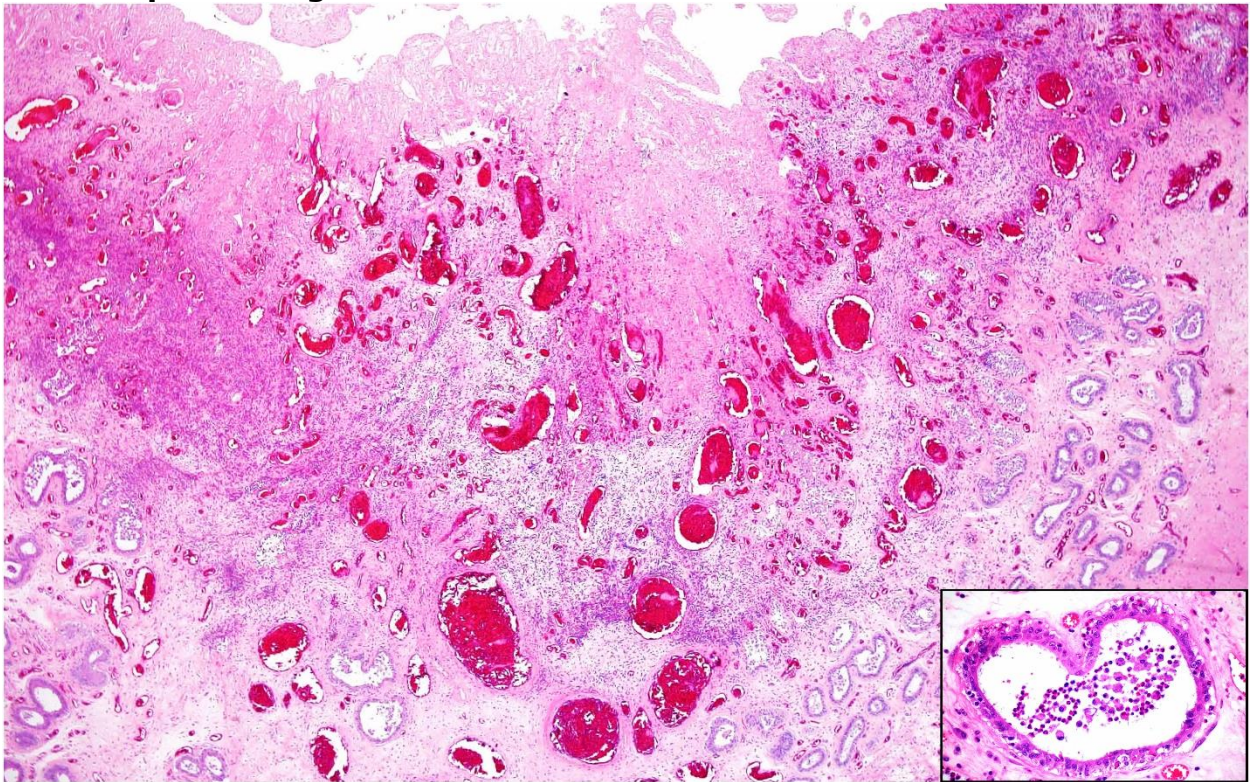
**Necropsy findings:** The main necropsy findings were observed in the uterus. The left uterine horn was enlarged and had three well-demarcated bulging, transmural, irregular, dark red to bluish foci visible from the serosal surface (Fig. 1A). In the lumen of the uterus there was large amount of dark red fluid, and the mucosal surface was dark red (Fig. 1B).



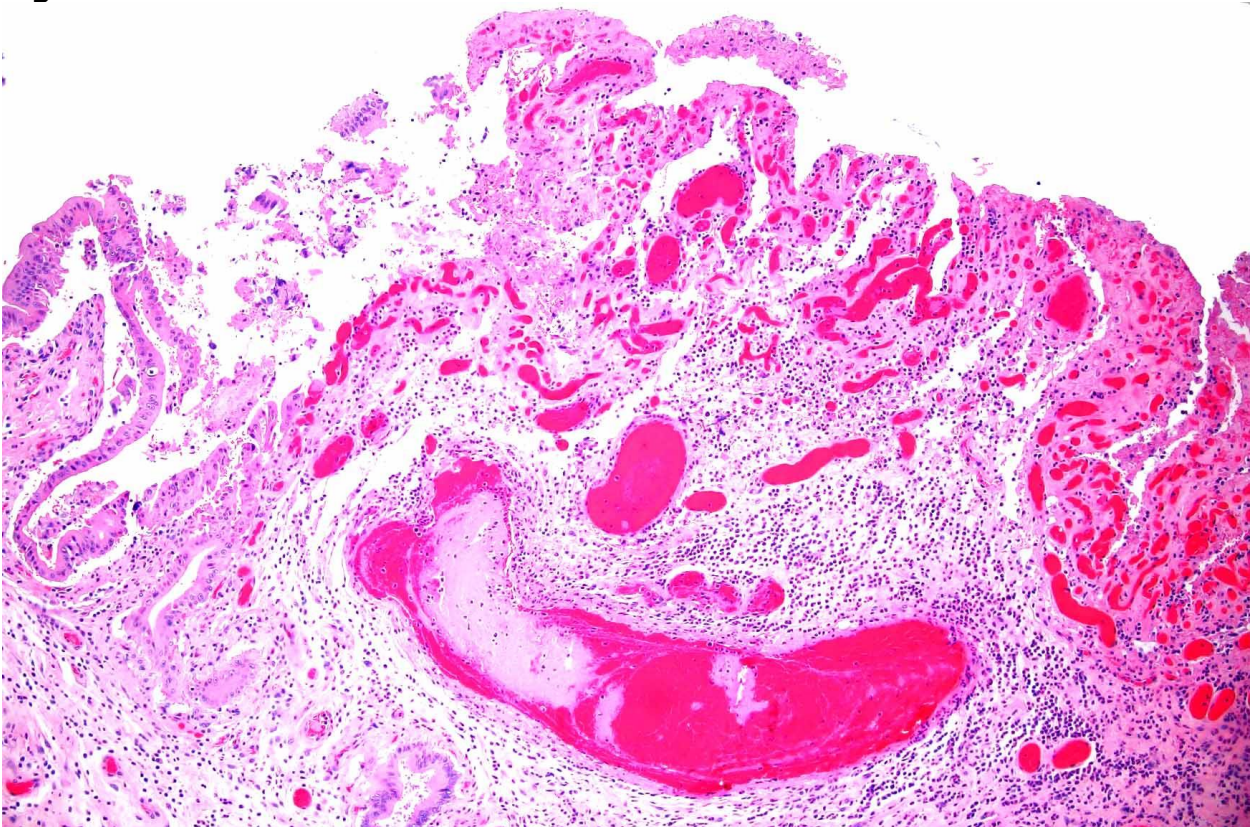
**Figure 1. Uterus.**



**Microscopic Findings:**

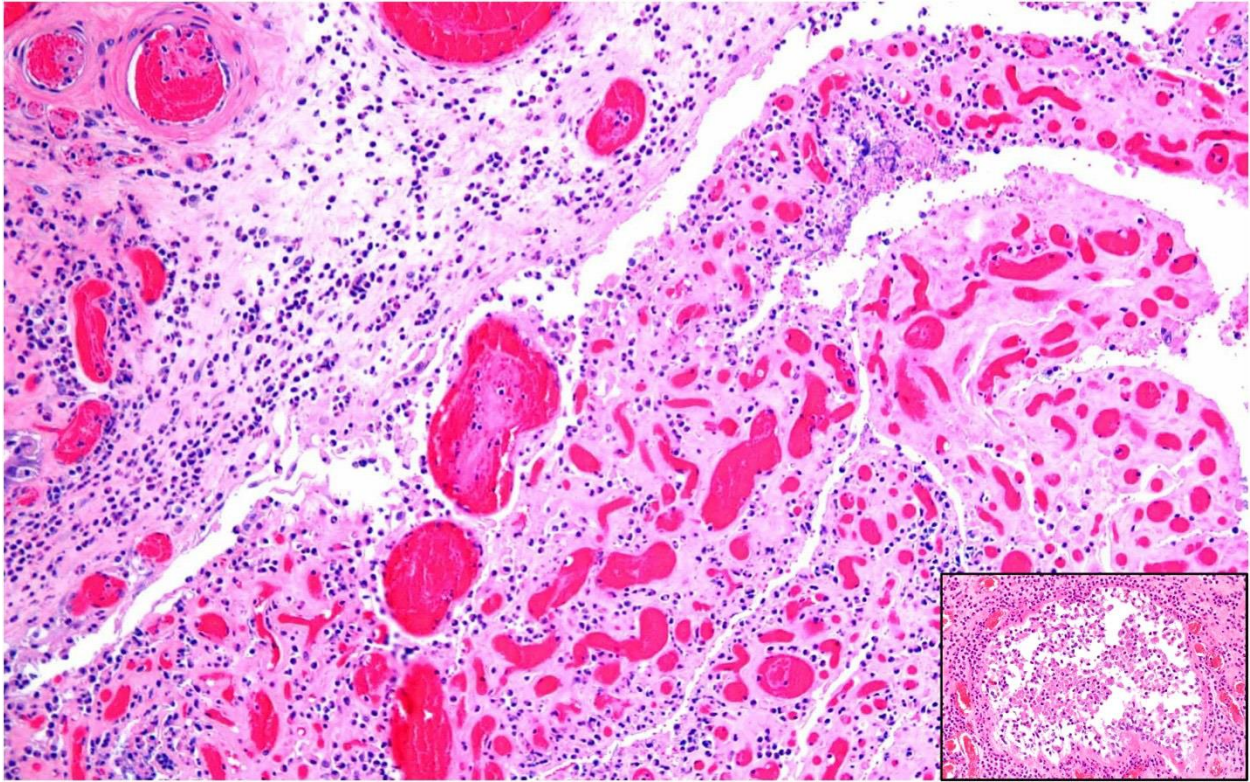


**Figure 2**



**Figure 3**





**Figure 4**

Follow-up questions:

- *Histologic description*
- *Ancillary test*
- *Morphologic diagnosis*
- *Etiologic diagnosis*

\*The Diagnostic Exercises are an initiative of the Latin Comparative Pathology Group (LCPG), the Latin American subdivision of The Davis-Thompson Foundation (DTF). These exercises are contributed by members and non-members from any country of residence. Consider submitting an exercise! A final document containing this material with answers and a brief discussion will be posted on the DTF website (<https://davisthompsonfoundation.org/diagnostic-exercise/>).

**Editor for this Diagnostic Exercise:** Francisco A. Uzal

**Editor-in-chief:** Claudio Barros