

# Davis-Thompson Foundation Annual Board Meeting (Virtual )

2-5pm (US Pacific time) Friday November 20, 2020

Join Zoom Meeting

<https://us02web.zoom.us/j/89091752809>

Meeting ID: 890 9175 2809

## REPORT

1. Welcome to everyone and introduction of Invited Guests (Rachel Autran; Angela Brice)

2. Review of 2019 budget (submitted to Board by Bruce Williams)

DAVIS-THOMPSON FOUNDATION - PROFIT LOSS STATEMENT (1 Jan 20 – 31 October 20)

OPERATING CAPITAL AS OF 2 NOV 20 - \$165,937.00

STRATEGIC RESERVE AS OF 31 Jul 20 – \$409, 612.34

NET PROFIT as of 31 Oct 2020 — 89,604.25

INCOME: (items with an asterisk have corresponding expenses associated with them)

POLA	\$	52,000
Publications*		48,613.50
University Memberships*		22,947.75
Descriptive Path		21,400
Individual Memberships	*	18,625
Forensic Path		16,500
DermPath		16,300
Aquatic Path		11,050
AAVLD 2052000		9400
GenPath20		8800
Clinical Path		8450
Digital Path		8150
Corporate Memberships*		8000
Cattle Diseases		7500
Poultry Diseases		6100
Equine Diseases		5350
Southcentral Meeting		4700

Pathogen Discovery	3350
Small Ruminants	3050
Chase Rewards	789.61
LCPG Overhead	<u>337.56</u>
	\$281,413.42

Significant income not included as of 1 November –  
GenPath 21 (Registration through 31 Oct )

9500

EXPENSES (items marked with an asterisk have corresponding profits associated with them)

Investments	\$ -35,100
Rent	-28,000
Worldwide Curriculum Enhancement Program	-19,500
Salary	-18,942
Publishing costs*	-14,792
Postage*	-12,162
Admin Office	-10,363.38
Air Travel	- 6856.75
Credit Card Fees	- 6363.77
AAVSB RACE	- 5370
GenPath20*	- 5088.58
Zoom	- 4493.49
Comcast (Phone, Internet, Office Cable)	- 4202.64
Awards Reception 2019	- 3643.30
Professional Fees (Accountant, filings, etc.)	- 3473.50
Utilities	- 2036.85
Office Maintenance (Cleaning, Mowing, Snow Removal)	- 1980
AAVLD19	- 1577.82
Externship Program	- 1575
Go Daddy	-1238.79
Individual Membership*	-1117.50
Verizon(Office cell)	- 1098
Survey Monkey	- 914.73
ATT (Toll-Free)	- 617.96
Network Solutions	- 603.01
PayPal (Gateway)	-415.60
University Membership*	-322.50
Corporate Membership*	<u>- 60.00</u>
	-191,809.17

SIGNIFICANT EXPENSE NOT INCLUDED

2020 Awards Reception Plaques (including postage)

- 3721

New Cash Expense voucher

### 3. Latin American Division Report (Carvallo)

Davis Thompson foundation activities in Latin America during 2020 and projections for 2021: Most of activities cancelled because of COVID-19. Despite this, some countries were able to develop on-line activities with great success:

Argentina: XIV DTF Seminar. Diseases of pigs. Joaquim Segales [Spain], Carlos Perfumo [Argentina], Roberto Guedes [Brazil], Pablo Pyñeiro [US].

Chile: Symposium of ruminant pathology: Santiago Diab [Arg]: neuropathology, Enrique Paredes [Chi]: pathology of alimentary system, German Canton [Arg]: Reproductive Pathology and Alfonso Lopez [Mex, Can]: Sepsis and Shock. 105 attendees.

Mexico: II Mexican seminar of the DTF. Donald Meuten [USA]: Renal and hepatic clinical pathology with gross correlations, Kevin Woolard [USA]: Pathology of the nervous system (viral and congenital diseases). Almost 350 attendees.

Uruguay: VI Uruguayan seminar of the DTF. Leonardo Minatel [Arg]: descriptive gross pathology, Francisco Uzal [Arg, USA]: Gross/microscopic correlation, David Driemeier [Bra]: Pathology of ruminants and pigs, Fernando Dutra [Uru] Rodolfo Rivero [Uru] and Federico Giannitti [Arg]: Diagnostic cases. More than 100 attendees.

Nicaragua: First approach in order to form the Nicaraguan subdivision. Guillermo Rimodli [Arg, USA]: Gross exam, Francisco Carvallo [Chi, USA]: Gross description of lesions. 200 attendees.

Seminars in Portuguese:

A series of seminars in Portuguese were offered in 2020 for Brazil, which was supported by the LCPG and DTF. For 2021, one monthly seminar is being planned.

Seminars in Spanish:

One seminar in Spanish was offered during 2020. For 2021, one monthly seminar is being planned.

New subdivisions:

For 2021, we are planning to have activities in Ecuador, Panama and probably Nicaragua, in addition to the already existing subdivisions (Chile, Argentina, Peru, Paraguay, Uruguay, Colombia, Brazil, Costa Rica, Guatemala, Mexico).

I am already trying to find information for Venezuela, Bolivia and other central American countries. The goal is to have subdivisions in all Latin America for 2025.

Descriptive course:

We will explore the possibility of offering the descriptive course in Argentina and Brazil. Work in progress.

#### 4. European Division Meeting report (McInnes/Priestnall)

##### European Division of the Charles Louis Davis and Samuel Wesley Thompson DVM Foundation 2020 (Non-)Meetings

**April**      **2<sup>nd</sup> Spanish Meeting, Diseases and Pathology of Ruminants and Pigs**  
University of Lleida, Spain – Paco Uzal and Joaquim Segalés  
**Cancelled** around 1mth before. 28 participants signed up and paid – all refunded in full.

**NB** 1-day registrations popular.

Overall a loss of £231.60 (rental car non-refundable)

**Currently undecided for 2021 – likely to go-ahead virtually or ‘blended’. Will decide in January**

**May**      **3<sup>rd</sup> Eastern European Meeting**  
Lake Ohrid, N Macedonia – Monika Welle and Matti Kiupel

**Cancelled** 1<sup>st</sup> April.

Overall loss of £172.63 for flight unable to take but still operating

**Rescheduled for same time in May 2021.**

**Sept**      **Annual Symposium (before the combined ECVP/ESVP/ESTP annual meeting) –  
Mouse Pathology**

Turin, Italy – Cory Brayton and Denise Imai

**Cancelled** 26<sup>th</sup> March. 4 participants registered – all refunded in full.

No loss to ED DTF

**Rescheduled for August/Sept 2021**

**Oct**      **Virtual Seminar – Productive veterinary pathology examination preparation  
(combined with BSVP and BSTP)**

Over 200 participants from around world

Well received and a good model for future seminars in 2021

- **Accounts**

- HSBC Bank UK
- Balance as at 16<sup>th</sup> Oct 19, £32,098.48
- Balance as at 16<sup>th</sup> Oct 20, £29,552.09 (main outgoings are for accountant £900, attendance at Board meeting in 2019 and for cancelled meeting in 2020)

- **Other members of the European Division Committee**

- Dr Liz McInnes – President of European Division
- Dr Alejandro Suárez-Bonnet – representative for Iberia and Southern Europe
- Dr Tamara Dolenšek – representative for Eastern Europe

Prepared by Simon Priestnall, Treasurer of the European Division  
13<sup>th</sup> November 2020



Universitat de Lleida  
Servei d'Investigació i Diagnòstic  
Anatomopatològic Veterinari

**2nd Spanish Davis-Thompson DVM Foundation Meeting**  
Diseases and Pathology of Ruminants and Pig  
Emphasis on GI pathology

**Dates:** April 2nd and 3rd 2020  
**Location:** Agro-food, Forestry and Veterinary  
Campus of the University of Lleida (ETSEA), Spain



**Dr. Joaquim Segalés**  
Autonomous University of Barcelona (UAB)

**Dr. Francisco Uzal**  
University of California

**Register at:**  
<https://www.eventbrite.co.uk/e/2nd-spanish-davis-thompson-dvm-foundation-meeting-diseases-and-pathology-of-ruminants-and-pigs-tickets-65370253187>



**SAVE THE DATE**

**Third Annual**  
**Davis-Thompson Foundation**  
**Eastern European Veterinary Pathology**  
**Meeting**



**Dr. Monika Welle**  
Dermatopathology

**Dr. Matti Kiupel**  
Infectious disease of pigs  
and Tumour grading

**Date:** Wednesday, 27th - 29th May 2020  
**Location:** Hotel Sileks, Lake Ohrid, North Macedonia



**Davis-Thompson Foundation**  
**European Division Symposium**  
Mouse and laboratory animal pathology  
NH Centro Hotel, Torino, Italy

**24 - 25 August 2020**



**Dr. Cory Brayton**

**Dr. Denise Imai**

**Early bird registration is €390 (until 30/06/2020)**

For more information and registration:  
<https://www.eventbrite.com/e/annual-davis-thompson-foundation-european-symposium-mouse-pathology-tickets-86715164391>

## 5. Australian Division (Ross)

### Davis Thompson Foundation Australia

*Dr Tony Ross - Honorary Director*

[tony.rossvetpath@hotmail.com](mailto:tony.rossvetpath@hotmail.com)

The Davis Thompson (DT) Foundation formed an Australian Division in 2006. The Foundation works closely with the Australian Society for Veterinary Pathology (ASVP), the Australian Animal Pathology Standards Program (AAPSP) and others to further continuing education in veterinary pathology in Australia.

#### **Australia 2020**

Support from the DT Foundation in Australia in 2020 usually includes one international airfare for the keynote speaker at the AAPSP Roadshow (some 30 hours plus of face to face continuing education) and one international airfare for the keynote speaker at the ASVP annual conference. However, this support was not required in 2020 due to Covid-19 meeting cancellations.

Australia is a sparsely populated large country. The veterinary pathology community is small. Support from the DT Foundation is greatly appreciated and enables regular high-quality continuing education in veterinary pathology.

In 2020 a series of virtual presentations “Australian Saturday Seminars” were presented and hosted by DTF. They ran July to November and were greatly appreciated. Thanks to Bruce Williams and Francisco Uzal for organisation and hosting, and thanks to the individual presenters for their excellent presentations.

#### **Australia 2021**

Australia appears (at time of writing) to have suppressed Covid-19 infections. International travel “bubbles” with countries with little or no infections (currently New Zealand and some Pacific island nations) are slowly opening up. However, Australia is unlikely in 2021, to open up to international travel from countries with significant COVID-19 prevalence rates. Therefore, we are planning with DTF USA help, another round of virtual seminars for 2021.

## 5. Activities of Global Health Pathology Network (Brown)



### Global Health Pathology Network

Aligned with the CL Davis-SW  
Thompson Foundation for  
Veterinary Pathology

### Report of Annual Activities, Nov 2019- Nov 2020

The Global Health Pathology Network was established in late 2015, at the request of Dr. Mark Simpson, who was then president of ACVP.

Mission: The GHPN facilitates pathologists in providing resources and guidance to enable sustainable, suitable and relevant efforts to global health.

Core members: Tanja Zabka (chair), Corrie Brown (vice chair), Tony Alves, Sarah Corner, Dalen Agnew, Ishtiaq Ahmed

#### Accomplishments over the last 12 months:

- We completed two in-person workshops – one in Bangladesh on poultry pathology in December 2019 and another in Pakistan on Basic Mechanisms of Disease in early March 2020.

The other international workshops planned for 2020 in Guatemala, Myanmar and Zambia were placed on hold due to COVID.

- We are currently designing another workshop in Pakistan for 2021.
- Additionally we partnered with AAVLD to hold a virtual day-long workshop on “Global Animal Health and Working in Development”, which was attended by approximately 90 participants, on October 15, 2020.
- We welcomed Dr. Ishtiaq Ahmed as the most recent member of the GHPN team. He is working to establish a GHPN "node" in Pakistan, especially in direct collaboration with Dr. Sarah Corner to facilitate telepathology. This will serve as the first pilot to establish self-built regional networks, which is one of our Focus Areas. We have written a telepathology considerations document to facilitate establishing telepathology in new regions.

We greatly value the support provided through our alliance with the Davis Thompson Foundation, and look forward to helping the Foundation expand training and learning efforts around the world.



## 6. Online Activities report (Dark)



# Davis / Thompson Foundation Online Activities Report 2020

- Wrote a guide to our IT Services (synopsis attached).
  - Given our significantly increased online presence recently, having a guide to what servers we have should make it easier to keep track of what's going on.
- Recruited two additional folks to work on the Foundation's IT services
  - Add to Wilson and I
- Working on migrating web server to Wordpress from current legacy system
- Set up new Canvas site (learning management system) to support online teaching – significantly more stable than the previous Canvas instance.
- Set up a Mailman e-mail listserv site – allows the Foundation to set up unlimited e-mail lists.
- Established a Dropbox-like server for the Foundation – this allows us to securely share files, as well as giving the folks working on the YouTube channel unlimited drive space to share video files of lectures.
  - NextCloud – allows syncing of files, but could also allow for a Foundation Address Book, Calendar, etc.
  - See <https://apps.nextcloud.com> for more possibilities
- Future work:
  - Migrate storage of digital slides to Spaces – significant cost savings
  - Migrate Noah's Arkive to Digital Ocean
  - Cross-reference gross photos with histopathology
  - Work on getting new folks up to speed

Open to suggestions!



## Table of Contents¶

<b>Service Providers .....</b>	<b>2</b>
Domain Name Registrar .....	2
Go Daddy .....	3
Amazon .....	3
Mailman (cldavis.mailman3.com) .....	3
Digital Ocean (www.digitalocean.com) .....	3
<b>Current Servers .....</b>	<b>3</b>
Main web server (www.cldavis.org) .....	3
Future Work .....	4
Noah's Arkive (noahsarkive.cldavis.org) .....	4
Future work .....	5
Canvas (canvas2.cldavis.org) .....	5
Whole slide imaging server (slides.cldavis.org) .....	6
Future work .....	7
Wordpress Test Site (testwp.cldavis.org) .....	7
Future Work .....	7
NextCloud server (cloud.cldavis.org) .....	8
Future Work .....	8

IT Guide TOC

## 7. North American Division Meeting reports

- a. Descriptive (Koehler)
- b. Gross Path (Uzal)

The 2020 Gross Pathology course (Krista LaPerle) was cancelled due to COVID19. A virtual session is already been announced for May 2021



**SAVE THE DATE**

**GROSS PATHOLOGY REVIEW COURSE**

May 17-21, 2021

**Course director: Dr. Krista La Perle**  
(Laperle.K@osu.edu)

**LECTURES ON MACROSCOPIC PATHOLOGY OF:**  
swine, birds including poultry, reptiles and amphibians, zoo and exotic animals, dogs and cats, fish, non-human primates, laboratory animals, ruminants, wildlife, horses;  
**Mock exam (ONLY FOR LIVE COURSE)**

Systemic approach for domestic species;  
Species approach for non-domestic species

**Registration:**  
Live course: non-DTF members: \$ 350  
Live course: DTF members: \$ 250  
Re-broadcasting: non-DTF members: \$ 200 (available through June 17, 2021)  
Re-broadcasting: DTF members: \$ 100 (available through June 17, 2021)

Register at <https://davisthompsonfoundation.regfox.com/grosspath2021>

### c. Gen Path (Pesavento)

P.A. Pesavento DVM, PhD, Dip ACVP  
Co-Director, General Pathology Course  
Prof and Chair, PMI, School of Vet Med, UC Davis

16 November 2020

The General Pathology Course was going to take a hiatus in 2021, but COVID changed all of that, and our ability to run the course remotely (Canvas and ZOOM) encouraged us to offer Gen Path in 2021. Jose Vilches (Stanford) joins the administrative team with Pesavento. We are taking the very best advantage of that opportunity, as you will see below. The dates of the course are 1-6 February, and this year the time span has increased (6 days instead of 4 days) and the hours that participants will have in the course is increased as well. The attendance was opened a few weeks back and we are over half full for the in-person experience (\$250) and have many signed up for re-broadcast of the remote course, which is \$100 (remote participation is unlimited). All of the faculty who participate in our course have a dynamic, interactive style, and we are absolutely sure that during that week they will be engaging, up-to-date, and available to the participants. We ask faculty as well to attend as many sessions as possible during the course. They will provide the more traditional delivery of material- but we, as a faculty, additionally are doing the following innovative valuable things for the participants:

1. The **faculty** [Imai, Vilches-Moure, Woolard, Wood, Stanton, Ball, Sakamoto, Nunes, Pesavento] provide a reference list of articles that they think are either extremely well-written and useful, or testable. That 2021 reading list is added on top of the reading lists I have collected since taking on the course (5 years), so at this point all participants get a journal article/pdf file of hundreds of excellent articles hand selected by our faculty. The participants receive that reading list in DECEMBER, as a way to add value to their study time before the course. On that list are several articles (denoted by asterisk) we use in the “break out” sessions (described below). We ask that they read those (~4-5) articles ahead of time since they will be part of a discussion on content and recognizing best material for exam questions.
2. **Break out sessions-** These are 1 hour interactive sessions to gel the material that is delivered didactically.
  - a. **[Myth Busters and Exam Transparency]** This is a session (Imai/Pesavento) for Phase I test takers to understand how questions are written, the proportions of the exam based on text material etc, and to bust any myths that are brought up. We solicit their questions re the exam ahead of time and address them.
  - b. **[Visualizing cell adaptations]** In this session (Stanton) we use ultrastructure to recognize and solidify concepts of cell change (apoptosis, necrosis, accumulations)

- c. **[Diagnostic problems- Microbial disease]** This session (Pesavento) is problem (case) based, and designed to teach diagnostic techniques, the method, their value and their limitations.
  - d. **[Toxicology and ID journal club]** In this breakout we talk about 4 chosen articles, and what would be the most important material from those articles. We use other literature (tests) to solidify the importance, and histology and ultrastructure visual representations to reinforce where that is applicable.
3. **“Walk in the committee’s shoes” Exam:** This year, we add a brand-new exciting interactive experience. In addition to two mock exams that we will give (by poll feature) to the live participants, we have an exercise that will generate an ~50 question exam that they will create, take, *and* take home. On Tuesday, we will facilitate that the participants meet in break-out rooms of 5-6 people. We ask them that by Friday, each group submit TWO questions to the faculty. Our faculty is heavily involved in exam (item/question) writing now and in years past (Imai, Pesavento, Wood, Woolard, Camus). We will collate those questions on Thursday night, and on Saturday we will EDIT them to create their sit-down exam for Sunday. On Sunday, all participants will take that (their own created, faculty edited) exam (1 hour) and then we will spend the next hour walking through the answers and the edits we faculty made to their questions. We can identify questions that are unsalvageable, excellent, or modified in some way. The participants will receive that exam as a tracked/edited document to keep.

#### **d. AAVLD (Kiupel)**

The CL Davis/SW Thompson Foundation conducted an eight-hour continuing education symposium entitled “Diagnostic Pathology of Wildlife Diseases” on October 16, 2020. This was the 20<sup>th</sup> CL Davis/SW Thompson AAVLD Diagnostic Pathology Symposium and it was held in conjunction with the 63<sup>rd</sup> Annual AAVLD meeting. After an introduction by course Director Matti Kiupel (Michigan State University), lecturers Drs. Scott Fitzgerald (Michigan State University) and Robert Ossiboff (University of Florida) covered the following topics: Pathology of wild mammals, pathology of wild birds, pathology of wild reptiles and pathology of wild amphibia. At the end of the symposium both speakers presented a gross and histopathology quiz that was designed to resemble ACVP board exam type questions. The program was approved for RACE credits and there were 208 registered participants with approximately 180 paying meeting fees of \$50. There were no expenses as course material and certificates were distributed electronically. In contrast to previous years, there was a significant participation of an international audience and the symposium was recorded and made accessible through video to allow for time differences. Rachel and Rafaela provided excellent online support and Laura and her team did an outstanding job moving the course evaluation to an electronic format. Both speakers provided excellent lectures and in particular the gross and histo images from Robert Ossiboff were outstanding and his material was cutting edge. I recommend considering him for future speaking engagements. Reviews were positive throughout.



### e. ACVP (Chapman)

#### 2020 ACVP Pre-Conference Workshop:

#### Oral Pathology of Companion Animals – The Common, the Classic, and the Confusing

Over 255 pathologists, residents, and veterinary students virtually attended the 2020 Davis-Thompson Foundation's annual Diagnostic Pathology Pre-Conference Workshop on October 27th to hear Dr. Brian Murphy and Dr. Cindy Bell share their expertise in oral and maxillofacial pathology. In this full-day session, Drs. Bell and Murphy presented an engaging workshop in dental, oral and maxillofacial pathology while emphasizing tumors and diseases of cats, dogs and horses. The subject matter targeted veterinary anatomic pathologists in diagnostic practice but offered insights to participants of all experience levels, ranging from keen veterinary students to veterinary dentists to seasoned diagnosticians. The format was interactive and constructed around case-based discussions with digital microscopy files that were available to registrants prior to the workshop. Images played a central role in the course, and gross and microscopic interpretation was integrated with clinical and radiological findings. The participants navigated the familiar waters of common oral surgical biopsy specimens as well as those that are only rarely submitted for diagnostic histopathology. The presenters also addressed dark and stormy topics, such as odontogenic tumors and tumor-like lesions. Finally,



at the end of the day, the presenters took us on a whirlwind tour of case studies in a "lightning rounds" session.

Emphasis was placed on how to create and work through a rationally organized list of differential diagnoses based on key diagnostic features, which may be histological, clinical or radiographic. The presenters shared their perspectives on the limitations of histopathology and how to help the clinical team move forward when faced with ambiguity. Veterinary dentistry and oral surgery is one of the most rapidly growing specialties and, consequently, there have been significant recent advancements in dental care and the therapy of oral diseases. This workshop was an excellent opportunity for attendees to get current on the nomenclature, diagnosis and pathogenesis of oral diseases.

Participant reviews were unanimously superlative. Here are some examples:

- "This was a fantastic seminar. The only thing was, I found myself wanting more!"
- "WOW. Really well done and good value for my money."
- "I loved it and especially enjoyed the dynamism of the speakers and the fact that they each presented in turn and alternated frequently."

Discussions are currently in-the-works to tackle the topic of Soft Tissue Tumors for the 2021 ACVP pre-conference.

#### Financials:

2019 (Skin and Mammary Tumors): \$15,900 profit

2020 (Oral and Maxillofacial Pathology): Not yet available

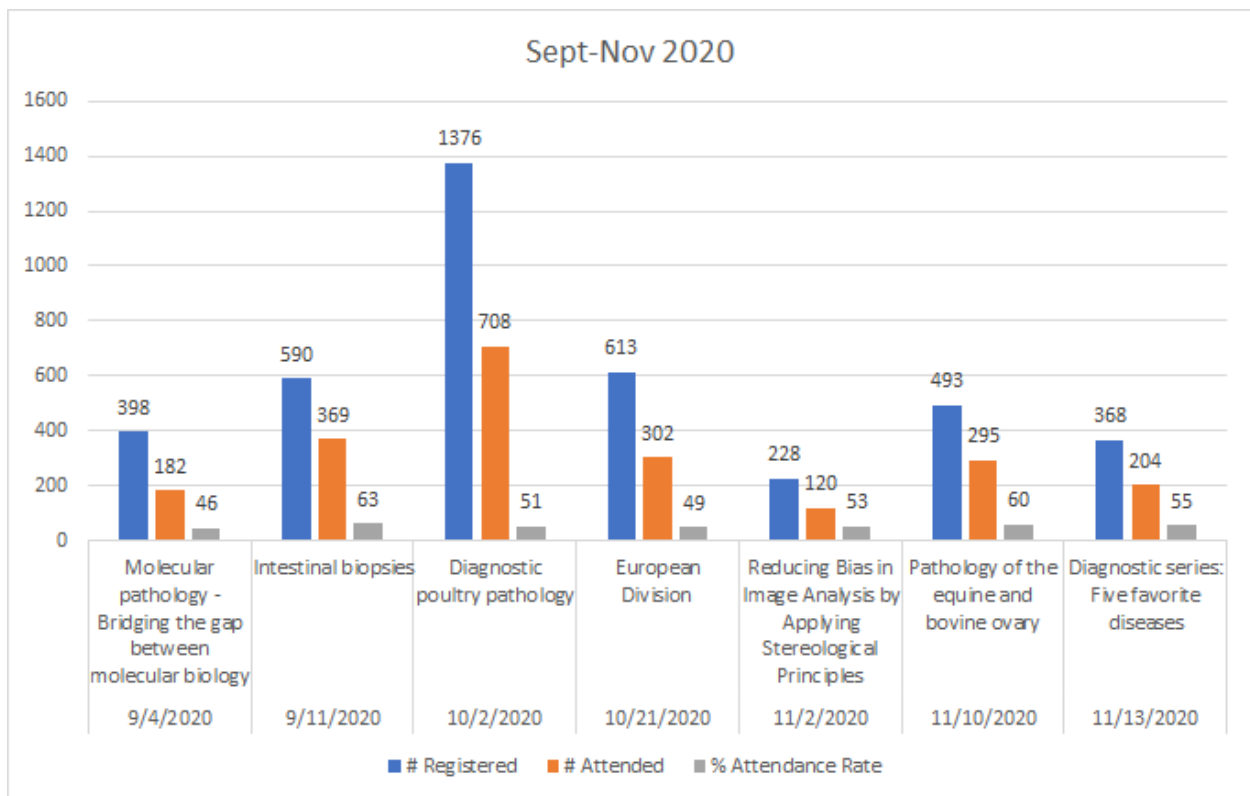
- Jennifer Chapman, Course Director

**f. POLA (Williams)**

## 8. Virtual seminars report (Autran/Uzal)

- Consistent webinar schedule since May 2020 (6 months in)
- Registrants average: 448
- Attendees average: 245
- Attendance rate: 54%

Tuesday full-day (\$50 registration fee - 8h RACE credits)	Free Fridays	Australian	Brazilian	Mexican	Argentinian	European
11	22	6	3	2	1	1





## 9. Course Oversight Committee Report (Uzal)

The Course Oversight Committee (Fabio Del Piero, Jey Koehler, John Edwards, Francisco Carvalho, Simon Priestnall, Liz McInnes, Tony Ross) was created in January 2020 and met twice (March and November). The minutes of the November meeting are provided below:

### 1-Committee charge

“Advice on general seminar and course policy”. Fabio: this committee should also be a quality control of the seminars. Not formal, but e-mail each other. Consider new speakers; e.g. dermatopathology, we have used only one person; there are better ones around. It was clarified that we had a day seminar with 4 dermatopathology speakers. Francisco: can we share proposed speakers for Latinamerica? Discussion and general agreement no need to share proposed speakers with committee before selecting. Bruce: we need to update our faculty of discussants and add young faculty. Fabio: try to convince speakers to produce more permanent presentations for YouTube.

### 2-Courses format for 2021 and beyond (virtual, in person, hybrid?)

There was general agreement to go with a hybrid mode for 2021. First semester courses will be on line and, COVID permitting second semester courses will be face to face but with a virtual backup plan.

### 3-Proposal for new annual-core course: diagnostics

Paco’s proposal. Possibility to organize per syndrome (diarrheas, etc). Could invite a clinician. Francisco: great idea; avoid too much overlapping with descriptive path.

### 4-Other business

Jey: Talk to Mike about the possibility to use servers to host slides in Canvas. Additional servers.

Possibility to have simultaneous translation. Can also create some post-meeting hand outs.

Offering RACE and MOC credits. 1 MOC and 1.5 (one/one) RACE for Friday seminars.

Jey discussed with Linden about gross course, can we change descriptive course a bit. Foundations of pathology course could be an idea. Rachel; publicize core courses early in the year so residents can plan their budgets ahead.

## 10. Metrics and Evaluation (Brown)



November 17, 2020

**TO:** Paco Uzal, President, Davis Thompson Foundation

**FROM:** Corrie Brown, leader of Evaluation Metrics group

**SUBJECT:** Report of **Evaluation Metrics** group deliberations

The Evaluation Metrics group, consisting of Laura Bassel, Cory Brayton, Jim Britt, Paco Uzal, and Corrie Brown, met twice during the summer of 2020. Our task was to determine if there could be better ways to evaluate Davis-Thompson seminars and workshops, for continual quality improvement and effectiveness. Survey Monkey is currently used, but there is nothing in that evaluation that determines the amount of learning that occurred. Laura Bassel then piloted a Friday seminar, with learning objectives presented, and then added evaluation of attainment of those learning objectives on Survey Monkey. This worked well and is now incorporated into the Survey Monkey assessments.

The group felt that accreditation entities are becoming more stringent regarding offering credit for continuing education and that incorporation of learning objectives in every activity proposed could help us to stay compliant and also give potential attendees a better impression of what will be presented.

As seminars are proposed and speakers designated, Paco will invite each speaker to list learning objectives for the material presented. Laura Bassel will oversee these objectives, and Cory Brayton and Corrie Brown will serve as backup to help Laura when needed.

The group developed a one-page overview on devising good learning objectives and this is now sent to every prospective speaker to help in their writing of learning objectives. (Attached below.)

## How to Write Good Learning Objectives

Writing good learning objectives takes time, practice, and thought. It is not a matter of what subjects you are covering, but rather, the key takeaways you want participants to incorporate in their cognitive structures. Especially at the DTF level of knowledge, our delivery is about so much more than conveying facts, but rather much more about building critical thinking skills that help the audience to advance in their analytical skills. Research has shown that after a 50' lecture, attendees remember only about 5% of what was said, so you can use your learning objectives to continually reinforce key concepts that will be retained forever. Writing learning objectives helps to focus the speaker on those key concepts. For a one-hour talk, there should be no more than three learning objectives. For a day-long seminar, it is hoped that the learning objectives of all the presenters could be synergized to results in 3-6 learning objectives overall.

THINK – what would you like the learner to be able to do at the conclusion of your presentation? And to be a good learning objective, it must be MEASURABLE. So, using words like KNOW or UNDERSTAND are not sufficient. Try using words such as ANALYZE, DEMONSTRATE, DISCUSS, IDENTIFY, INTERPRET, EXPLAIN, DIFFERENTIATE, or DETERMINE.

As you develop your learning objectives, use the phrase “*At the completion of this program, the learner will be able to....*” in your mind, to help you construct the most useful objectives.

Here are some examples of good learning objectives, to get you started:

At the completion of this program on FIP, the learner will be able to:

1. **Describe** the pathogenesis of feline infectious peritonitis
2. **Discuss** how large catteries could remain free of this problem
3. **Explain** why FIP is almost always a fatal disease

At the completion of this program on hypersensitivities, the learner will be able to:

1. **Differentiate** the various types of hypersensitivities based on how they present
2. **Identify** the major mediators in each type of hypersensitivity
3. **Determine** the best therapy for each type of hypersensitivity, based on the pathogenesis

At the completion of this program on pulmonary pathology, the learner will be able to:

1. **Interpret** pathologic changes in lung according to geographic distribution and explain how that can relate to type of pathogen responsible
2. **Distinguish** between URT and LRT diseases and how the clinical signs will differ markedly
3. **Explain** the pathogenesis of bronchopneumonia and interstitial pneumonia

## 11. Social media report (DeNegri)

Social media:

Social media platforms in use:

- Facebook group - 6.6K
- Instagram (is now changed to a business account) - 1,582
- LinkedIn (through use of other groups e.g. Veterinary Pathology- 6k, ACVP -300)
- YouTube - 5,83K

Focus/aims:

- optimize and automate use of SM platforms
- continue to grow the Foundation's online presence and global reach
- provide immediate, easy access to various information (announcements and access to courses and webinars, educational materials, information on broadcasting).
- present the webinar agenda in an easy format.
- serve as tool for prompt communication
- provide a space for community building
- create opportunities for interaction and information exchange
- remain relevant with young professionals

### Examples on how we are achieving these goals:

- colleagues now know where all information on the Foundation's upcoming courses and webinars "live" on the internet. To assure we are inclusive we provide such information across all platforms, via Google calendar and via email (listserv)
- advertisement is delivered to a targeted, relevant audience seamlessly (through their regular use of SM). Providing value without being aggressive or overwhelming.
- colleagues are engaging with the foundation and with each other through our tools (they share our posts, tag colleagues to them, post about the Foundation over their personal pages. (passive advertisement).
- our SM platforms have been providing quick answers and solutions through its easy access communication vehicles (private message, comments, etc).
- The SM also served as a tool to communicate last min changes, corrections and promotional sale.

## 12. Review of Publications Division Report (Kiupel)

PUBLICATIONS DATA AS OF 17 NOV 2020

Overall Sales:	\$48,613.50
MINUS	
Publishing costs*	-14,792
Postage*	-12,162
TOTAL:	\$21,659.50

2020 SALES	
TUMORS OF SOFT TISSUE	558 copies
MAMMARY TUMORS	202 copies
EPITHELIAL TUMORS	192 copies
OCTOBER SURPRISE (ALL THREE FOR \$100)	91 sets

PREMIUM USAGE OF VOLS. 2 AND 3	
INDIVIDUAL MEMBERSHIPS	148 copies
UNIVERSITY MEMBERSHIPS	48 copies
CORPORATE MEMBERSHIPS	8 copies

We are working on the bone and cartilage volume, the text is essentially written. Since the pattern images in volume 3 were well received, also decided to add radiographic images and drawings to match the microscopic appearances. Regardless, the volume was too short, so we decided to add hard tissues (teeth etc.) and Keren Dittmer is the chair of the volume. Adding the dental tumors has been the main delay, so my goal is to complete this first thing in 2021 depending when Brian Murphy and Cindy Bell can get me the material.

In parallel we have the urogenital, intestinal and melanocytic volume running and discussions about the pancreatic/hepatic and ocular volumes. That's all I can handle at one time.

### 13. Awards report (Gendron)

## **Davis /Thompson Annual Awards Report Virtual Reception – October 27,2020**

### **Awards**

1. Pathology Training and Scholarship Award (formerly known as the Student Scholarship Award) This award is given to a resident or graduate student in a training program leading to ACVP certification in each university which is that year a University member of the Foundation The awardees are evaluated by their pathology department and expected to show superior scholarship along with exceptional diagnostic skills. It is expected that the nominee will also show leadership in their resident cohort, enthusiasm and skill in teaching and be seen as a valued mentor to their fellow residents as well as the veterinary students. An excellent working relationship with faculty and clinicians is also expected. Graduate students who are veterinarians and training to take a pathology board exam are also evaluated on the value and originality of their research and writing.
2. Journal Award is given for best article from the previous year's Veterinary Pathology journal as judged by writing, illustrations, pertinence and import.
3. Barbara Jean Thompson Service Award is given to a person who has contributed a significant amount of voluntary effort to the Foundation over an extended period of time
4. Diagnostic Exercise Award is sponsored by the Latin American Comparative Pathology group and is given to the exercise voted on by them as the best over a recent set period (a year) of time.
5. Not Given this year
  - a. Harold W. Casey Award for Excellence in Teaching of Veterinary and Comparative Pathology
  - b. Robert Farrell Award
  - c. Sam Thompson Award
  - d. Latin American Travel Awards

### **Solicitation and Processing of Awards (assisted by Clara Cole)**



1. Pathology training and Scholarship Award – Letters and emails soliciting nominations are usually sent to current university members of the Foundation in April/May of that year. Current member departments are solicited from the Foundation records and the master list of US/Canadian training programs held by the Awards Committee. Departments are contacted directly to let them know their membership is late and must be paid in order to submit a nominee. The department is required to submit a letter of nomination on departmental stationery, signed by the department head. While this can be scanned and emailed as an attachment, an email nomination is not accepted. In addition, we require the nominee's current CV. After acceptance by the Awards committee, a colored digital photo of the nominee and a short paragraph from the nominee's training co-ordinator are also requested. These are usually due by August 30<sup>th</sup>. **During the Foundation Board meeting this spring we had tentatively decided to cancel the awards if the meeting was cancelled. Discussion with several training faculty led me to reconsider as an entire group of residents would then go unrecognized. A decision was made to hold a virtual reception along with the virtual ACVP meeting. We were several months later than usual in soliciting nominations and the entire Covid 19 pandemic had left many departments working from home and many memberships had been overlooked or the people who would have done that had not been working. I obtained a list of those who had and had not paid from the Foundation and began emailing requests for membership dues and nominations using my previous list of contacts. We reminded those who had not yet paid their membership that they needed to do so before submitting a nomination.** *(Determining who to address these emails to is normally difficult due to the fact that the previous training coordinators or department heads may have left or rotated off. This year it was particularly difficult to get a hold of people who were often were extremely busy themselves trying to adjust to pandemic conditions. We had to develop a new University membership form for this year in order to better obtain this information.*

After acceptance by the Awards committee, a color digital photo of the nominee and a short biographical and complimentary paragraph from the nominee's training co-ordinator are also requested. The nominee's CV usually provides the current email and a list serve of all awardees is developed for ease of sending out information on the reception. Emails are also sent to each awardee asking them to verify the spelling of their name

and how they wish it to appear on the plaque. The date and time of the reception is provided as well.

While many of the universities are quite good at getting their materials in on time, others often need to be reminded that they have either not paid their membership dues as of yet, not submitted their nominations, or have photos or paragraphs yet to submit. This requires numerous emails and calls and usually takes at least a month or more after the deadline. The names of all awardees must be sent to the engraving company in time for them to engrave the plaques and send them to the ACVP mail in site for the meeting. Spelling of names, schools, journal titles and diagnostic exercises must be double and triple checked for accuracy before the final list is submitted. I check with Jane Shepard as to the date and address of the mailing site at least 2-3 months before the meeting. Plaques are given out to awardees at the reception if a meeting is held, however, this year the engraving company generously offered to mail them out individually for us.

2. Journal Award is chosen by Dr. Jey Kohler and her committee (residents I think) and submitted to me At the beginning of September. I look up the article and cross check the accuracy and spelling of the title, journal and page #s as well as the author's name(s) I send the awardee an email with an attached letter of congratulations telling them the date and time of the reception, verifying their name and other details. This year additional emails were sent arranging that they would be present and would be seen on video at the virtual reception. The awardee was in Australia so times needed to be coordinated.

3. Barbara Jean Thompson Service Award is determined by nominations by Board members and a selection by myself, Bruce Williams and the President of the Foundation. I send the awardee an email with an attached letter of congratulations telling them the date and time of the reception, verifying their name and other details. Further emails were sent arranging that they would be present and would be seen on video at the reception.

4. The Diagnostic Exercise is determined by the LCPG and submitted to me. Clara and I look up the exercise and cross check the correct title, # and the spelling of the submitter's name(s) I send the awardee an email and an attached letter of congratulations telling them the date and time of the reception and other details. Further emails were sent arranging that they would be present and would be seen on video at the reception.

5. Clara made up the list for the engravers which we both double checked for accuracy and spelling as well as a program listing all awards and the awardees with their bio paragraphs and photos to send to Bruce for the newsletter and Facebook. A letter giving each of the Pathology Training and Scholarship awardees a free year of membership in the Foundation after they complete their training is included in that award. Clara and I revised our previous letter and developed a new membership form for this purpose, both of which were sent to all the Trainee awardees.

## **Presentation of Awards**

Clara put together the Power Point presentation of the Awards program. Rachel Neto set up the registration and zoom scheduling for the ceremony as well the Facebook stream and doing the introduction slides, and she and Rafaela organized the actual ceremony details on zoom as well as the video photos and presentation videos for the virtual ceremony. Due to a last minute scheduling of an exam discussion by the ACVP we delayed the ceremony a half hour from when it was previously scheduled. All awardees and presenter were notified of this change by Clara and I, and Rachel and Rafaela made sure that the Facebook stream and members were also notified. This could not have been done without their help and cooperation. Francisco Uzal, myself and Jey Koehler presented the awards. The entire ceremony took just under an hour and a half. The engraver's bill has been submitted and paid.

### **Attachments:**

1. List of awardees
2. Word doc program
3. Letter of membership award
4. Trainee membership form

## **Student Scholarship Award**

Emily Brinker

Auburn University

Adam Harris	Colorado State University
Cristy Rocío González Barrientos	Cornell University
Ya-Mei Chen	Iowa State University
Lauren Peiffer	Johns Hopkins University
Miranda Frohlich	Kansas State University
Mariano Carossino	Louisiana State University
Leah R Stein	Michigan State University
Nataly Mamaliger	Mississippi State University
Hiroyuki Mochizuki	North Carolina State University
Joshua Lorbach	The Ohio State University
Erin Stayton	Oklahoma State University
Teresa Garcia	Oregon State University
Priscila Beatriz da Silva Serpa	Purdue University
Carolina Azevedo	Texas A&M University
Melissa Roy	University of California, Davis
Albert Byungyun Jeon	University of Florida
Danielle Elizabeth Lieske	University of Georgia

Gary Kwok Cheong Lee

University of Guelph

Natalie Kirk

University of Illinois-Urbana Champaign

Jennifer Bouschor

University of Minnesota

Catherine Shoemake

University of Missouri

Michael Lund

University of Pennsylvania

Brodie Reinhart

University of Prince Edward Island

Nathan Hoggard

University of Tennessee

Erika Hoffeld

University of Wisconsin-Madison

Vanessa Oakes

Virginia Tech

Jessica Wong

Washington State University

### **Journal Award**

Lead Intoxication in Free-Ranging Bald Eagles (*Haliaeetus leucocephalus*)

Leah K. Manning, A. Wünschmann, A.G. Armien, M. Willette, K. MacAulay, J.B. Bender, J.P. Buchweitz, and P. Redig

Veterinary Pathology 2019, Vol. 56(2) 289-299

### **Barbara Jean Thompson Service Award**

Vinicius Carreira

### **Best Diagnostic Exercise**

Nicolas Streitenberger

## Diagnostic Exercise #146

“Bovine Bronchopneumonia by Bovine Respiratory Syncytial Virus (BRSV); with Secondary Bacterial Infection”

### **2020 AWARDS PROGRAM**

**October 27, 2020 6:30 PM**

#### **Auburn University**



#### **Dr. Emily Brinker**

A Maryland native, Dr. Brinker received her BA from St. Mary's College of Maryland and her DVM from St. George's University, doing her clinical rotations at The Ohio State University. At Auburn, she is currently in her fourth year of a combined anatomic pathology residency/Biomedical Sciences PhD. She is pursuing her research under the guidance principal investigator Dr. Emily Graff (DACVP clinical pathology), where her work focuses on the physiology of feline FGF21, particularly focusing on the effects of FGF21 and FGF21 analogs on liver lipid accumulation and storage. Emily has been dedicated to the physical and psychological enrichment and well-being of the cats on a daily to weekly basis since the start of her project, a significant effort. She has been an energetic leader in resident-driven activities such as rounds and journal club, and her enthusiasm and quirky sense of humor are always uplifting to those around her.

## **Colorado State University**



### **Dr. Adam Harris**

During Adam's residency, he has pursued multiple opportunities to expand his clinical knowledge, develop his teaching style, and conduct multiple research experiments. He has given multiple case-based and didactic lectures while at CSU and has evolved as a teacher. Most recently, he led a bone marrow workshop for the anatomic and clinical pathology residents. Additionally, he has completed multiple projects surrounding his primary interest in hematopoietic disorders/neoplasms. His work over the past three years at CSU, has resulted in three platform presentations at multiple ACVP conferences, co-authorship of a book chapter, publication of two manuscripts, as well as three other manuscripts that are currently in review. He was awarded the ASVCP Young Investigator Award in 2018 for his work in monoclonal protein quantification using densitometry. This year, he mentored a veterinary student's project for submission in the ACVP's student poster presentation characterizing monoclonal proteins in B cell chronic lymphocytic leukemia(s).



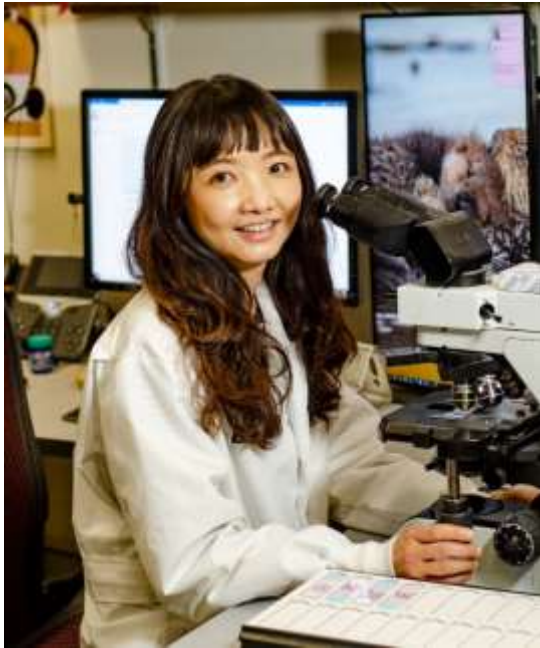
## **Cornell University**



### **Dr. Cristy Rocío González Barrientos**

Dr. Barrientos joined us from the Animal Health National Service in Costa Rica, where she had served as a staff pathologist. Prior to that, she served as a clinical instructor in pathology at the National University's School of Veterinary Medicine in Costa Rica. Dr. Barrientos has a strong interest in infectious disease, especially those diseases that are at the interface of public and wildlife diseases. She is widely published with papers involving a wide range of animal species including Caribbean Sharpnose Puffer Fish, vampire bats, and numerous marine mammals. She currently serves as the chief resident at Cornell University College of Veterinary Medicine where she interfaces with other hospital residents and helps improve morale and communication. Rocío is a hard worker, a great colleague, and a strong advocate for our program. She is an excellent diagnostic pathologist and is more than deserving of this award. We are excited to see where her career takes her next!

## **Iowa State University**



### **Dr. Ya-Mei Chen**

Ya-Mei graduated from the National Pingtung University of Science and Technology, Taiwan, in 2007 with her DVM degree. After graduation, she worked as a government veterinarian for four years, after which she pursued her master's degree in veterinary medicine at the National Taiwan University and investigated tissue tropism and the infectivity of Porcine Teschovirus. During this time, she published her research findings on porcine Teschovirus in "Veterinary Microbiology" journal. Simultaneously she worked as a resident veterinarian in pathology at the same institution. In 2017, she received Taiwan government fellowship for studying abroad and began a combined PhD and Anatomic Pathology Residency Program in the Department of Veterinary Pathology at the Iowa State University. She joined Dr. Eric Burrough's laboratory at the start of her program, and her research focus is on porcine epidemic diarrhea virus (PEDV) infection in weaned piglets. She investigates molecular and cellular pathogenesis of PEDV in weaned piglets and the subsequent impact on innate intestinal immunity and epithelial integrity during restitution of the disease. Ya-Mei has demonstrated outstanding motivation and perseverance in her studies and duties as a combined resident and graduate student and has authored multiple research papers and abstracts. In her spare time, Ya-Mei enjoys running and hiking. She plans on pursuing a career in academia and research following her residency.

## **Johns Hopkins University**



### **Dr. Lauren Peiffer**

We are very pleased to nominate Lauren Peiffer, a recent graduate of ours from the comparative pathology residency program at Johns Hopkins University, for the Charles Louis Davis, DVM Foundation Pathology Trainee and Scholarship Award. During her time with us, Lauren has shown herself to be incredibly hardworking, intelligent, and a natural teacher for our more junior residents. She was able to pass ACVP boards on her first try while in the midst of her research for her PhD thesis in the laboratory of Dr. Karen Svanos. Lauren is currently preparing her thesis on the influence of gut microbiome on prostate cancer and will soon be finishing up her PhD in the Cellular and Molecular Medicine graduate program at Johns Hopkins. We could not be more proud of Lauren's accomplishments and we look forward to great things from her in the future.

## **Kansas State University**



### **Dr. Miranda Frohlich**

Dr. Miranda Frohlich's interest in veterinary pathology started during her veterinary training at Midwestern University college of Veterinary Medicine where she participated in research under the mentorship of Valerie M. Wong, DVM, PhD, DACVP. Subsequently, Miranda joined the Clinical Pathology team at Kansas State University as a resident. During residency, Miranda has gained a reputation as an excellent teacher amongst senior veterinary students in the diagnostic medicine clinical rotation. Miranda is a deep thinker, consistently applying pathophysiology to clinical presentations and facilitating broad discussions incorporating relevant literature and comparative medicine. She has concurrently pursued graduate education with a thesis-based master's degree in clinical immunology. We thank Dr. Frohlich for her contributions to our program at Kansas State and congratulate her on her well-deserved recognition by the C.L. Davis Foundation.

## **Louisiana State University**



### **Dr. Mariano Carossino**

Mariano Carossino received his DVM from the Escuela de Veterinaria, Universidad del Salvador, Buenos Aires, Argentina in 2012. He subsequently joined the Equine Virology Unit at the Institute of Virology, National Institute of Agricultural Technology (Buenos Aires, Argentina), where he trained in basic and diagnostic virology. In 2013, he was awarded a Fulbright Scholarship and joined the Molecular Virology Laboratory at the Gluck Equine Research Center, University of Kentucky, where he completed his PhD in 2018 in Cellular and Molecular Virology under Dr. Udeni Balasuriya's mentorship. Dr. Carossino joined the Anatomic Pathology Residency Program at the Department of Pathobiological Sciences/Louisiana Animal Disease Diagnostic Laboratory, SVM in July 2018. In November 2019, he became a diplomate of the American College of Veterinary Microbiologists. Dr. Carossino's research focus is in the area of viral pathogenesis, host-virus interactions and development of molecular diagnostics. Dr. Carossino has 25 peer-reviewed publications, 10 of which are directly related to his PhD, and the remaining related to other research projects as well as collaborations. He has also co-authored 3 book chapters and presented more than 40 abstracts at national and international meetings. During his tenure as an anatomic pathology resident he has significantly contributed to establishment of the Chronic Wasting Disease Testing Program at the Louisiana Animal Disease Diagnostic Laboratory in collaboration with the Louisiana Department of Wildlife and Fisheries, expanded the capabilities of the Immunohistochemistry Section, and has continued his research and diagnostic activities. Recently, he was involved with the establishment of SARS-CoV-2 testing in animals and has collaborated in several research projects evaluating the susceptibility of different animal models to SARS-CoV-2 infection. Dr. Carossino is looking forward to continuing his academic career as an Assistant Professor in the Department of Pathobiological Sciences, LSU starting in 2021.

## **Michigan State University**



### **Dr. Leah Stein**

Dr. Leah Stein is a Michigan State Spartan through and through. She received her bachelors, master's in public health, and veterinary degrees from Michigan State University before being selected for a three-year residency in anatomic pathology. She has published papers on canine lymphoma and equine squamous cell carcinoma, as well as learning theory in biology pedagogy. Besides her remarkable pathology skills, intellect, humility and work ethic, Dr. Stein has been an outstanding mentor for her fellow residents. She loves her dogs and cat, Klavon's pizza, and weightlifting, and is starting a new job at Idexx.



## **Mississippi State University**



### **Dr. Nataly Mamaliger**

Nataly is a third-year resident in our anatomic pathology residency program at Mississippi State University College of Veterinary Medicine. Dr. Mamaliger has been an asset to the anatomic pathology program from the time she arrived. She has shown tremendous growth in her abilities as a teacher, a pathologist, and a mentor to veterinary students and to the other residents in our program. Her necropsy and biopsy service work are accurate, thorough, and timely. Dr. Mamaliger maintains a close working relationship with clinicians and residents from all the services at the veterinary school and is always excited to discuss cases and provide updates. Dr. Mamaliger is in charge of ophthalmologic pathology rounds this year, and was in charge of neuropathology rounds last year, where she coordinates with clinicians and residents from the services to present a broad overview of selected complex or interesting cases that include the clinical presentation, exam findings, biopsy findings, and other diagnostics. She has done multiple presentations at national meetings, including two presentations at last year's ACVP conference, both of which were well received. It has been extremely rewarding to watch Dr. Mamaliger mature into a strong and competent pathologist. She has developed and has implemented changes in our residency and veterinary student program that will continue to improve the learning of our students and residents even after she is gone. We are very proud of Dr. Mamaliger and we believe that her commitment, enthusiasm, competence, and love of the profession embodies the type of resident that this award was designed to support.

## **North Carolina State University**



### **Dr. Hiroyuki Mochizuki**

Dr. Hiroyuki Mochizuki has an impressive pedigree which includes receiving his Bachelor of Veterinary Medical Sciences, Completion of a Small Animal Internship, and PhD in Veterinary Medical Sciences from the University of Tokyo. Dr. Mochizuki's dissertation is titled *Clonality Analysis of the Neoplastic Diseases in Cats*. Afterwards Dr. Mochizuki completed a postdoc and residency in clinical pathology at the North Carolina State University College of Veterinary Medicine. Dr. Mochizuki excels in applied research, including test development, one-on-one teaching, and cytology evaluation and interpretation.

Dr. Mochizuki has received multiple grants and has many publications including his work on the BRAF mutation assay. When it comes to teaching, small groups and one-on-one interactions are his strength. Dr. Mochizuki has a lot of experience teaching in the second-year clinical pathology labs and fourth year clinical pathology rotations. When teaching students, he is very enthusiastic, prepared and knowledgeable. With this being said, he is fantastic at the microscope! Dr. Mochizuki is comfortable and at his best when teaching veterinary students, interns, and visiting house officers at the microscope. Lastly, Dr. Mochizuki's cytology skills are exceptional and trusted by all. As a mentor and fellow clinician, I do not worry about anything being missed when Dr. Mochizuki is on cytology service.



## **The Ohio State University**



### **Dr. Joshua Lorbach**

Over the course of thirteen years enrolled as a student at The Ohio State University, Dr. Lorbach earned a BS in Agriculture (2011), DVM (2014), and PhD in Comparative and Veterinary Medicine as part of the Combined Veterinary Anatomic Pathology Residency/PhD Program at OSU (2020). Dr. Lorbach's dissertation research under the guidance of Dr. Andrew Bowman focused on mitigating public health risk posed by influenza A viruses (IAV) circulating in swine at the human-animal interface. This work resulted in numerous poster and scholarly presentations delivered at regional, national, and international meetings. He received a Research Travel Award to the 51st AASV Annual Meeting 2020 and the ACVP/ASIP Travel Award to Experimental Biology 2019 supporting his work. His dissertation research and collaborative work have resulted in publication of 1 first author and 7 co-author manuscripts, with 5 more currently in preparation or under review. He was an OSU nominee for the 2018 National Phi Zeta Manuscript Award Competition based on his manuscript describing detection of PHEV in association with an outbreak of respiratory disease in US exhibition swine. In addition to his routine animal challenge work under BSL-2 conditions, he completed the CEEZAD BSL-3 Laboratory Training/Transboundary Animal Diseases Summer Program at Kansas State University in 2017. Following completion of his PhD, he continued in his lab as a postdoctoral scholar where he was involved in a study assessing a novel SARS-CoV-2 screening technology. He also received funding as a co-investigator to improve current methods of swine depopulation. Dr. Lorbach recently accepted a position as a clinical instructor in anatomic pathology at OSU.

## **Oklahoma State University**



### **Dr. Erin Stayton**

Erin was driven and determined to succeed in becoming a veterinary pathologist. While in veterinary school, she first became interested in anatomic pathology. After being in general practice for a couple of years, her desire to pursue pathology training heightened, at which time she actively sought residency training opportunities. She recently and successfully completed her residency training, also in the midst of rearing a young child and with other familial obligations.

Erin was passionate about teaching pathologic concepts to veterinary students, during necropsy service duty as well as Gross “Show N Tell”. She often formulated a thorough, interactive discussion, and challenged the students to not only remember what they had learned in the veterinary curriculum, but to also understand and apply that knowledge. Additionally, Erin effectively completed a portion of the Hepatobiliary and Pancreatic lecture series to veterinary students, and synthesized assessment questions to test the student’s scope of remembrance and comprehension of the concepts.

As a resident, Erin was always well-prepared to discuss necropsy and biopsy cases with faculty pathologists. She usually performed literature searches on diseases associated with her cases, and sometimes even challenged the dogma, in an effort to enhance her own understanding. She also often ordered appropriate ancillary tests for her cases, to assist with confirmatory diagnoses.

Erin regularly took initiative during her residency training. With a dual interest in research, not only did she work hard to fulfill her duties as a resident, but also occasionally assisted research faculty in the Pathobiology department with experimental protocols. Erin has provided oral presentations at the AAVLD Conference and Phi Zeta Research Day. She has also co-authored a manuscript, and additionally, has other manuscripts in progress. During the summer of 2020, coupled with the challenges of COVID-19 and the desire to continue with some resident rounds, she coordinated the virtual meetings for Biopsy rounds.

## **Oregon State University**



### **Dr. Teresa Garcia**

Teresa graduated from the veterinary school at Colorado State University in 2018. She is currently in the third year of her anatomic pathology residency at Oregon State University. She has special interests in dermatopathology in all species, herd health, large animal pathology, and enjoys teaching students of all levels. During her residency at Oregon State University, Dr. Teresa Garcia has excelled in the realms of diagnostic pathology, clinical research and teaching. Now as a final year resident, Dr. Garcia capably navigates the diagnostic challenges that routinely cross her desk – those that include a broad range of domestic species, zoo animals, wildlife, aquatics, reptilians and invertebrates. For clinical research she has successfully developed techniques for microscopic exam of honey bees, has characterized a series of dogs with epidermolysis bullosa (including defining a novel mutation), and contributed to a case series on camelids with sunflower seed toxicosis.

For teaching, Dr. Garcia has demonstrated extraordinary dedication and commitment to veterinary students by helping to transition the OSU Diagnostic Services Rotation (4<sup>th</sup> year students) to a remote format during the coronavirus pandemic. She is a valued colleague throughout the Carlson College of Veterinary Medicine and regularly reaches out across disciplines to broaden her expertise and provide the highest level of patient care. She is looking forward to a career in diagnostic pathology in a public or private laboratory. In her 'spare' time as a resident, Dr. Garcia is known for especially heroic mountain bike adventures that include solo traverses of remote parts of the western USA, fending off bears and dodging mountain lions.

## **Purdue University**



**Dr. Priscila Beatriz da Silva Serpa**

Dr. Serpa is a third-year clinical pathology residency at Purdue University with a strong interest in research and academia. Dr. Serpa's background includes a DVM at Universidade Federal do Rio Grande do Sul (UFRGS), Brazil (2004-2009), followed by a Master of Science degree (2010-12), and a Ph.D. degree (2012-2015) at the same university. In 2015, she also worked at the University of Adelaide, Australia as a tutor for veterinary students and two local research projects in equine theriogenology. Lastly, Dr. Serpa served as a Postdoctoral Research Associate at Cornell University for two years, where she studied interactions between Equid Herpesvirus type 1, endothelial cells, platelets, and leukocytes.

Dr. Serpa is an outstanding resident; she is enthusiastic and passionate about teaching and has done exceptional scholarly work. She was responsible for a research project on the direct detection of intraerythrocytic reactive oxidative species (ROS) in animals and was awarded the ASVCP Share the Future grant with the project "Validation of a flow cytometry-based cell and differential counts in chickens." Dr. Serpa efforts in the two years of residency have resulted in six peer-reviewed publications, five oral presentations at the ACVP/ASVCP Annual Meeting, the 1st Joint Congress of Veterinary Pathology and Veterinary Clinical Pathology (ECVP) in the Netherlands, and the Annual Meeting of the Midwest Association of Veterinary Pathologists. She also presented eight poster presentations at several conferences.

Dr. Serpa is passionate about clinical pathology and has contributed immensely to the field of Veterinary Pathology.

## **Texas A&M University**



### **Dr. Carolina Azevedo**

Dr. Azevedo completed her Clinical Pathology Resident in July 2020 with a Masters (NT) in Biomedical Sciences from Texas A&M University and accepted a position with Phoenix Lab in Mukilteo, WA as a diagnostic clinical pathologist. Dr. Azevedo received her Bachelor of Science in Biomedical Sciences from Texas A&M University, College of Veterinary Medicine & Biomedical Sciences and her Doctor of Veterinary Medicine from Louisiana State University, School of Veterinary Medicine. She completed a Small Animal Rotating Internship at Auburn University Small Animal Teaching Hospital, and worked as an Oncology Specialty Intern with Affiliated Veterinary Specialists in Maitland, FL and as a veterinary locum with Banfield Animal Hospital in Orlando, FL prior to accepting the residency position at Texas A&M University. During her residency, she completed externships at IDEXX, Antech, and the Texas Veterinary Medical Diagnostic Laboratory. She has been active in ASVCP as the ASVCP Resident Liaison Group Spokesperson and was awarded the ACVP Young Investigator Award for First Place in Diagnostic Pathology in November 2019 for her poster, Pathological and Flow Cytometric Features of a Case of Canine Lymphangiosarcoma. Among her many accomplishments, Dr. Azevedo is multi-lingual, speaking English, Spanish, and Portuguese. Dr. Azevedo has definitely been a great asset to the College of Veterinary Medicine & Biomedical Sciences at Texas A&M University.

## **University of California – Davis**



### **Dr. Melissa Roy**

The 2020 recipient of the C.L. Davis Student Scholarship Award from the University of California, Davis is Dr. Melissa A. Roy. Mel will complete her 3-year residency training in Anatomic Pathology in July, 2020. She joined our residency program after completing her DVM at the University of Minnesota in 2017. When Mel visited our residency program during her interview, she established an instant rapport with our technical staff, residents, and faculty- there was absolutely no doubt that we had found our incoming lab-animal track resident. She has an unassuming, self-effacing personality that belies how intelligent she is, and how integral she has become to both our diagnostic pathology service and now, in the comparative medicine investigations she participates in while at the California National Primate Research Center and the Comparative Pathology Laboratory. As a resident, she has been engaged with the Stanford University School of Medicine's Comparative Pathology program both as an extern as well as through running the bi-monthly comparative medicine rounds hosted through UC Davis. No matter where she goes, everyone that Mel interacts with uniformly praises her aptitude for anatomic pathology, her critical thinking abilities, and her sheer eagerness to learn. She is a natural for comparative medicine and pathology- appreciating the nuances of disease across disparate species but always coming back to her very strong core training in diagnostic pathology. Her ability to relate to and value each individuals' contribution in team projects will continue to make her sought after in collaborative research projects, where she has shown remarkable insight and ability to relate investigative pathology to her diagnostic interests- including in her residency research project characterizing the inflammatory response in feline oral squamous cell carcinoma. Over her three years in this residency, we have all seen Mel grow into a confident and capable pathologist- gifted at articulating her thought processes and at tackling complex lesions with deft precision. At UC Davis, there is not a faculty member, resident, nor student that has not benefited from working next to her. As Mel moves into her professional career, she will absolutely enrich any program that has an opportunity to work with her and we congratulate her on this very well-deserved award.



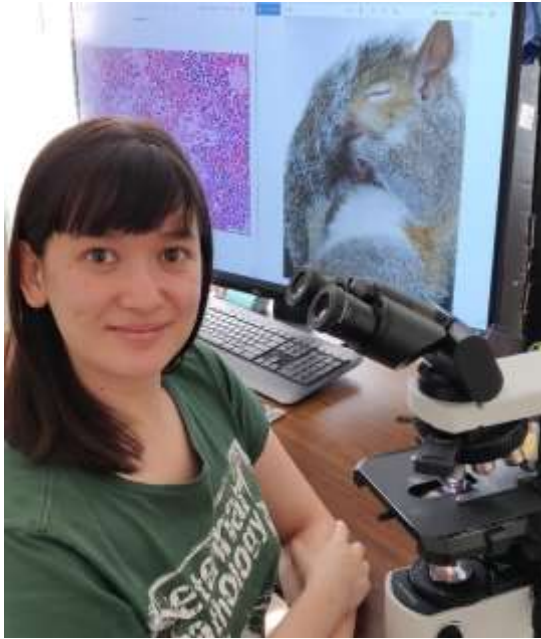
## University of Florida



### **Dr. Albert Jeon**

Albert is not only an incredibly talented pathologist, he is an incredibly kind, caring, and thoughtful person who was an absolute joy to work with as a resident. Somehow, throughout his tenure as resident, Albert seemed inexplicably unfazed by the demands placed upon him and approached each assigned task with interest and a smile. While I have encountered others in a residency setting that are able to meet all of the requirements of the position with little stress, I have never met anyone who could also do that while helping raise two young children (his two daughters whom he loves dearly) at home. Moreover, Albert took an active role in developing resident-led rounds that will be of benefit for years of residents to come and in shaping an incredibly cohesive group of residents who all work to help each other out. Everyone who worked with Albert during his time at Florida has nothing but the best things to say about their experiences with him and his skills as a budding pathologist.

## University of Georgia

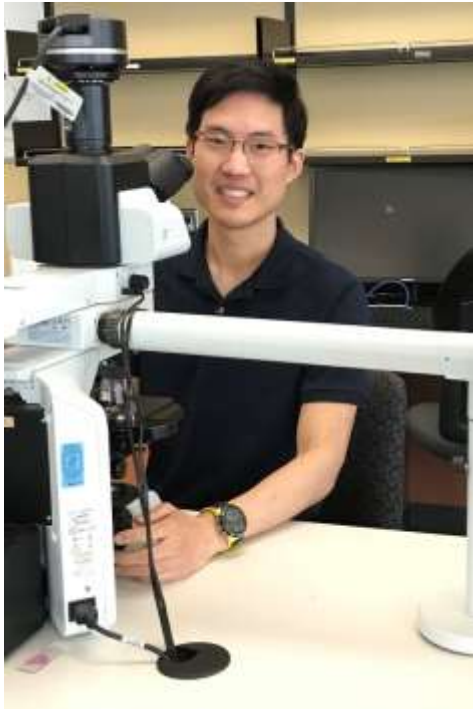


### **Dr. Danielle Lieske**

Dr. Lieske received her DVM from University of California, Davis in 2017. She then completed an anatomic pathology residency at University of Georgia in 2020. During her time in the program, Danielle was active in seeking out opportunities to expand her training. She coordinated many organ-based advanced studies for publication. In addition, she was a key player in the advancement of digital pathology within the residency program, especially recognizing the value of this modality for virtual learning. Danielle has taken on numerous leadership roles, including the unofficial IT helper for resident-mates and faculty, SOP writer for our digital microscopy casework, coordinator of our ACVP Student-Resident Forum publication, and assistant in the CVM-wide holiday gingerbread competition. Danielle enjoys the opportunity to work with students, teaching coursework in necropsy, general pathology, and medical terminology. As a previous quality assurance auditor and trimming technician, Danielle has a great appreciation for the entire process of anatomic pathology and strives for quality in her endeavors and for her clients. Her intellectual curiosity and drive have made her a knowledgeable veterinary pathologist. Danielle's innate enthusiasm for pathology has been wonderful to see and be around. Danielle will be missed at UGA, but we are excited for her and for the opportunity to work with her in the future.



## University of Guelph



### **Dr. Gary Kwok Cheong Lee**

Gary is a citizen of Mauritius and Australia. He obtained his Bachelor of Veterinary Medicine and Surgery with High Distinction from Murdoch University in Perth, Australia, in 2014. Following that, Gary briefly practiced first opinion veterinary medicine in Australia, and then completed a Master of Veterinary Clinical Sciences concurrent with a residency in Anatomic Pathology at Murdoch.

Gary moved to Canada to join our Department in September 2017 for the combined PhD/Clinical Pathology residency program. Not surprisingly, Gary had an impressive head start relative to even most anatomic pathology residents in anatomic pathology, and he also 'hit the ground running' in the Clinical Pathology training program. His progress throughout the past three years has been exemplary. At this point Gary is our senior resident (who would have written Phase II of the Certifying Examination in August 2020, had the pandemic not been), and he is our go-to-person for most questions in diagnostic pathology. Gary is a "walking encyclopedia" of Veterinary Pathology, but he also thinks and rationalizes through diagnostic algorithms, always has excellent ideas regarding additional investigations, and is extremely helpful to junior and peer colleagues (and senior faculty).

Gary's enthusiasm for Veterinary Pathology is enormous. In his spare time, he participates in all available on-line rounds, works his way in the evenings through our archive of 40+ years of cases from Annual Meetings, seeks out any extra slides coming from the wildlife, zoo and toxicologic pathology areas, and anything else that would broaden his knowledge in Veterinary Pathology. As such, we consider Gary to exemplify a trainee utterly dedicated to excellence in diagnostic pathology.\

## University of Illinois - Urbana Champaign



### **Dr. Natalie Kirk**

Dr. Natalie Kirk is one of our recently graduated anatomic pathology residents and is being nominated for her exemplary academic, diagnostic, and scholarly performance at the University of Illinois VDL. While here in the residency, Natalie was dedicated and proficient in her involvement in research in addition to being an outstanding writer, leader and mentor to her fellow resident mates, and diagnostician. Natalie initiated her research with a case series of mycobacterial infections in cats and submitted at least 2 grant applications to fund that project. Due to some research funding struggles (it is a serious struggle these days!), Natalie quickly moved into a project on evaluating hepatotoxicity secondary to itraconazole. She established an *in vitro* model for her toxicity studies on the effects of glutathione in alleviating itraconazole-induced toxicity on canine hepatocytes. She was awarded the 2019 ACVP Travel Award to the 2020 Experimental Biology meeting and the 3<sup>rd</sup> place ACVP Young Investigator Award in Experimental Disease and Toxicologic and Industrial Pathology with this work. In addition to these research presentations, she also presented 2 case reports at MAVP meetings, 1 case report poster at ACVP, and a case at the neuropath mystery session at ACVP. Lastly, she was successful at getting a case report of osteoblastoma in the distal humerus of a cat published in the Journal of Comparative Pathology in 2019, and has been working on two additional manuscripts based on diagnostic material in the VDL for publication (feline cutaneous mycobacteriosis and Langerhans cell histiocytosis in a dog). She is currently at the University of Minnesota completing PhD research in infectious diseases. We sincerely look forward to seeing how Dr. Kirk's continual dedication to research and pathology will contribute to the medical community.

## **University of Minnesota**



### **Dr. Jennifer Bouschor**

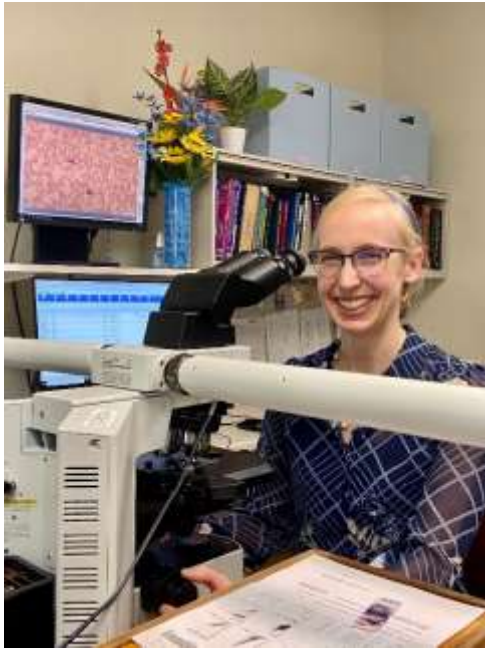
Dr. Bouschor is a 3rd year Clinical Pathology Resident at the University of Minnesota, College of Veterinary Medicine and her performance across all areas of her program has been exceptional. Jen joined our program in July of 2018 following the completion of a 1-year Clinical Pathology Internship at Kansas State University.

Her enthusiasm for Veterinary Clinical Pathology was evident from the moment she joined us and, more impressively, her passion for growth and training is extraordinary. Without prompting, Jen is the first of us in the building (and in front of a microscope) each morning and the last to leave every night. With a mentality that is no doubt influenced by her experience as a Veterinary Clinician, Jen never turns down an end-of-day submission (and is appropriately beloved by her clinical resident mates). She enthusiastically embraces her role as a diagnostician and her passion to deliver timely, high-quality clinical pathology data could serve as a lesson for us all. In addition to her growth as a diagnostician, Jen has embraced her role as an instructor with robust enthusiasm. As an example, Jen took it upon herself to near singlehandedly redesign our 4th year Senior Clinical Pathology Rotation (in response to COVID19 limitations on in-person teaching).

Finally, Jen's progress as a biomedical scholar may be the most impressive aspect of her residency. She joined our program with no notable research experience. However, in 2 years, she has successfully designed and implemented a clinical research project (which she will be presenting at this year's ACVP/ASVCP Annual Meeting) and prepared a successfully funded grant application to support this project.

Jen is among the most driven and hardworking residents I have met. She takes nothing for granted and is an egoless trainee that selflessly pursues diagnostic excellence for the betterment of our patients and our profession. Her drive and passion will allow nothing less than greatness.

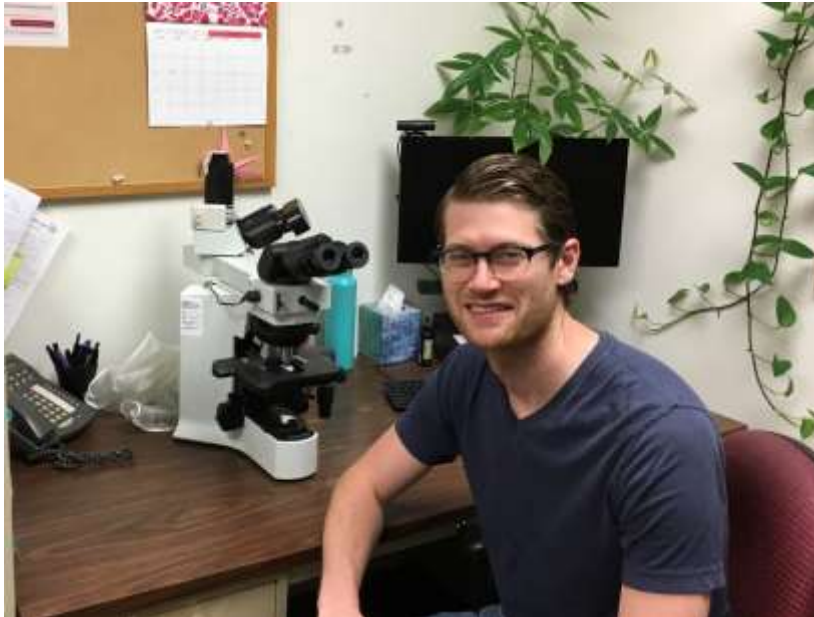
## University of Missouri



### **Dr. Catherine Shoemake**

Catherine Shoemake completed a combined clinical pathology residency and MS program this summer at the University of Missouri, and we could not be prouder. She is an independent and thorough learner and investigator; this is especially evident in her master's work evaluating associations between environmental factors, hematologic parameters, and hemoparasite load in camelids. Additionally, Catherine has the notable distinction of being our first resident to present an ASVCP mystery slide or case discussion each year of her residency, and we are all in awe of her presentation abilities! Over the past three years, Catherine has developed into a skilled diagnostician and proactive instructor. She was instrumental in rapidly shifting our clinical instructional model online this past Spring and excels at instructing veterinary students. Kindness and generosity are at the forefront of everything Catherine does. Despite a demanding residency and master's program, she always makes time for others. Catherine is the first to lend a hand to pathologists and techs alike on busy days in the lab or to mentor the junior residents. She does so efficiently, effectively, and graciously. Our faculty and staff unanimously agree that she has had a positive impact on our team, and on everyone fortunate enough to cross her path. We are thrilled to have her stay on as a clinical instructor for the next year!

## University of Pennsylvania



### **Dr. Michael Lund**

Dr. Michael Lund is an exceptionally talented third-year resident at the University of Pennsylvania. During his residency, Michael has become an accomplished diagnostician, teacher, and researcher. Comments about Michael from our faculty include: "He is an exceptional veterinarian and teacher and cares very deeply about his cases. He's professional, dependable, and a hoot to work with. I wish that we could keep him forever!" Another says: "Michael is service oriented and self-directed, taking ownership of his cases and his scholarship. He consistently goes out of his way to elevate the experience of those around him, including students, resident-mates and faculty. He embodies all of the qualities of an eagle scout: trustworthy, loyal, helpful courteous, kind obedient, cheerful, thrifty, brave, clean and reverent and applies them to his profession."

He performed a complicated retrospective study that led the collaborating professor to note that he is "diligent, attentive, smart and careful".

In addition to performing exceptionally well as a pathologist Michael is kind and caring and a team player who goes out of his way for everyone on the staff, taking on tasks that are not glamorous and will not advance him professionally, but nonetheless must be done to keep the department's teaching and service missions on track. He deflects praise for these efforts and it is clear that it makes him happy to see others and the department as a whole be successful.

Lastly, Michael has managed to keep up with all that he does professionally while also keeping on top of his responsibilities as a new father with a baby at home! We are happily awaiting to see all the successes that Michael will be enjoying as his training here finishes – he will better our profession in so many ways.

## University of Prince Edward Island



### **Dr. Brodie Reinhart**

Dr. Brodie Reinhart is from New Brunswick, a province of Canada. He received a Bachelor of Science degree in 2011 from The University of New Brunswick and a Doctor of Veterinary Medicine degree in 2015 from the University of Prince Edward Island. He worked in small animal practice for 4 years, then returned to the University of Prince Edward Island to start a clinical pathology residency and Master of Veterinary Science graduate program in 2019.

Dr. Reinhart has a strong work ethic and is developing excellent diagnostic skills with particular strength in cytology. He is progressing well on his research project, has submitted a poster and a mystery case for the ACVP/ASVCP annual meeting and has enjoyed teaching endocrinology to students. Dr. Reinhart is interested in exotic and wildlife pathology and his contributions in this area have been very helpful. Dr. Reinhart is also technologically knowledgeable and with the pandemic suddenly demanding online rounds, the clinical pathology group relied on him to orchestrate these. They have to ensure he has time for clinical pathology training, not just meeting demands as a handy IT person! Dr. Reinhart has graciously taken this in stride, illustrating his professional and helpful nature. His other attributes include determination, a sense of humor and willingness to embrace constructive critique.



## University of Tennessee



### **Dr. Nathan Hoggard**

Nathan Hoggard began his residency in 2018 after graduating from North Carolina State University with a GPA of 3.97. He has consistently excelled in every aspect of anatomic pathology training. He is an excellent diagnostician whose fascination with the molecular mechanisms of disease has inspired unique and interesting research projects. He has an interest in bone pathology that inspired a project looking at medullary bone in male birds. He also arranged an externship to learn about medical device pathology at W.L. Gore and Associates, which was unfortunately cancelled due to the pandemic. Nathan understands the importance of collaboration and tirelessly pursues contacts far and wide to improve his ability to study topics that interest him. He passed the Phase I ACVP exam and consistently performs very well on our biannual mock board exams. I have no doubt that he will soon be a boarded pathologist and productive researcher. He has also been an outstanding mentor to our newer residents, especially during these difficult times of distance learning. During his third year of residency he has been residency liaison as well a senior resident, managing and signing out biopsy and necropsy cases on his own. As in all things, Nathan has excelled in these roles. We look forward to seeing his career continue its upward trajectory.

## University of Wisconsin-Madison



### **Dr. Erika Hoffeld**

Dr. Erika Hoffeld's intellectual curiosity and inquisitive and critical eye propel her to the depths of understanding disease mechanisms and to excel in pathology. A keen observer of all things pathological, she also quests for the perfect words and phrases to describe gross and histologic marvels (a poet, if you will), all the while lighting up a room with her wit, cheerful disposition, and if you are lucky, soothing singing voice. When attending presentations given by Dr. Hoffeld, it becomes clear that she has an uncanny ability to know her audience, to anticipate trains of thought, provide background and context, and resolve points of confusion before they become barriers to understanding. Complex topics are rendered accessible through her knowledge, empathy, and skill. Students and other residents find her a delightful and compelling instructor and mentor, and it is not uncommon for her student evaluations to say things like "hire her as a lecturer." Her knowledge, drive, expertise, and diligence has made her one of the very best residents that we have had the pleasure of training.



## Virginia Polytechnic Institute



### **Dr. Vanessa Oakes**

Dr. Oakes is an anatomic pathology resident in our combined PhD program, and is expected to complete her program and earn her doctorate in 2021. She has been dedicated to biomedical and infectious disease research, as evidenced by her enthusiastic work spanning her undergraduate years to the present. Recently, she has played a key role in the identification of an emerging infectious agent in Southwestern Virginia with important public health implications for the region. In order to do this, she had to master multiple techniques, doing extra training in the realm of hematology and cytology. Moreover, she has presented her work at regional and national scientific meetings, winning awards along the way (2019 AAVLD/ACVP Diagnostic Pathology Travel Award: *Theileria orientalis* Ikeda genotype is in Cattle in Southwestern VA). Her work, both doctoral and for her specialty training, has resulted in multiple publications such as “*Theileria orientalis* Ikeda Genotype in Cattle, Virginia, USA” published in *Emerg. Infectious Disease* 2019. She is also dedicated to teaching, with extensive experience teaching veterinary students necropsy, histology, and even clinical pathology topics (cytology and hematology). Dr. Oakes is a diligent and meticulous resident, whose strong work ethic and intellectual curiosity are belied by her easy-going personality. She is a pleasure to work with, and we expect great things from her.

## **Washington State University**



### **Dr. Jessica Wong**

Jessica joined the anatomic pathology residency/PhD program at Washington State University after graduating from the University of Georgia with her DVM degree in 2015. Jessica has extremely strong work ethic, intelligence, academic curiosity, leadership skills, and is driven to get the best out of herself and those around her. These qualities have not only led her to becoming an astute and efficient diagnostician, they have motivated her to surpass our expectations by publishing two case reports, performing publication quality investigation on several other cases, presenting at 3 national/international conferences, organizing resident histopathology rounds, and passing phase I of the ACVP certification exam despite losing childcare support weeks before the exam due to the COVID-19 pandemic. In addition to her responsibilities as a pathology resident, Jessica has simultaneously advanced her PhD research project, “evaluating the mechanisms of dissemination and immune evasion in the Lyme disease spirochete during mammalian infection”, under the guidance of her PhD advisor, Dr. Troy Bankhead. While balancing the demands of the residency and family life Jessica has been able to maintain a 3.9 GPA and passed her preliminary exam with apparent ease. Based on her exceptional academic performance Jessica has been awarded a prestigious ARCS Foundation Scholarship, an Immunology and Infectious NIH-T32 Fellowship, the Lt. Col. Ralph, USAF, and Wife Ruth Maree Fowler Emerging Disease Graduate Student Scholarship, and a Poncin Fellowship. Like many women during the pandemic, Jessica was without childcare for her 1.5-year-old daughter and spent months trying to be a full-time mom and still advance her PhD and pathology training. Throughout this period Jessica demonstrated grit, resilience, and dedication to both her family and her profession. These intangible qualities and her academic performance are just a few of the reasons we are so proud to have Jessica represent our program and why we are confident she will have an outstanding career as a board-certified pathologist.

## **Davis/Thompson Foundation Journal Award**



### **Dr. Leah Kay Manning**

Lead Intoxication in Free-Ranging Bald Eagles (*Haliaeetus leucocephalus*)

L.K. Manning, A. Wünschmann, A.G. Armien, M. Willette, K. MacAulay, J.B. Bender, J.P. Buchweitz, and P. Redig

Veterinary Pathology 2019, Vol. 56(2) 289-299

<https://journals.sagepub.com/doi/full/10.1177/0300985818813099>

**Leah graduated with a BVSc (hons) from The University of Sydney. After working for several years as a veterinary practitioner, she completed a small animal internship in Sydney. Leah then completed her veterinary anatomic pathology residency at The University of Minnesota and became a member of the pathology chapter of the Australian and New Zealand College of Veterinary Medicine in 2016 and Diplomate of the American College of Veterinary Pathologists in 2017. Leah is now working as a diagnostic pathologist at Elizabeth Macarthur Agricultural Institute, New South Wales, Australia. She is also currently doing a PhD in the pathogenesis and characterization of inherited neurologic diseases in sheep.**

**Abstract:** Lead toxicity due to ingestion of spent ammunition is an ongoing cause of mortality in bald eagles. While gross and histologic lesions of lead intoxication have been described in a few individuals of this species, the prevalence of lesions is underreported. A retrospective study of 93 bald eagles with severe lead intoxication was performed to describe the associated lesions and their prevalence and to compare the lesions with blood, liver, kidney, and/or bone lead concentrations. Gross lesions associated with lead toxicity were most frequent within the heart (51/93 birds) and consisted of multifocal myocardial pallor and rounding of the apex. Within the brain, gross lesions included petechiae or hemorrhagic necrosis (13/93 birds). Histologic lesions compatible with lead toxicity occurred within the heart (76/93 birds), brain (59/93 birds), and eyes (24/87 birds). Lead toxicity in bald eagles is characterized by fibrinoid necrosis of small- to medium-caliber arteries, most commonly affecting the heart, brain, and eyes. Gross and histologic lesions are consistent with ischemia caused by a primary vascular injury. A blood lead concentration of greater than 4 ppm and markedly elevated liver lead concentrations were associated with a greater likelihood of lesions in the heart. Severe lead intoxication is frequently associated with lesions that are histologically detectable in bald eagles. The presence of fibrinoid arterial necrosis and parenchymal degeneration, necrosis, and/or hemorrhage within the heart, brain, and/or eyes is suggestive of lead toxicity in bald eagles and warrants evaluation of liver or bone lead concentrations.

## **Davis/Thompson Foundation Barbara Jean Thompson Service Award**



### **Dr. Vinicius Carreira**

Vini is a Scientific Director of Pathology at Janssen Research & Development (Johnson & Johnson). In his role, he heads a Molecular Pathology team and supports drug discovery and development projects. Vini and his team provide scientific input in the design, conduct, and interpretation of experiments that focus on characterizing the safety of novel therapeutics and/or understanding mode(s) of action for toxicity in nonclinical studies. He also provides investigative guidance and scientific leadership in pathology to local drug discovery teams, identify and lead collaborative mechanistic efforts with internal, external consortia and academic investigators. Originally from Latin America, Vini was born in Brazil to Portuguese parents and retains dual nationality for the two countries. Academically, he completed formal Residency Training in Veterinary Pathology at Michigan State university; he holds a DVM and a PhD in Molecular Genetics and Environmental Toxicology from the University of Cincinnati. Prior to joining Janssen R&D, he worked as a Senior Pathologist at Vet Path Services (Mason, OH), where he spent almost 5 years serving as a Study Pathologist for nonclinical safety assessment studies, and he was at MPI Research prior to that as part of his training. Vini is a diplomat of the American College of Veterinary Pathologists (ACVP) as well as a diplomat of the American Board of Toxicology (ABT). He is very passionate about science and toxicologic pathology. He is an engaged member of the Society of Toxicology (SOT), Society of Toxicologic Pathology (STP), American College of Veterinary Pathology (ACVP), and American College of Toxicology (ACT). Vini volunteers as a scientific reviewer for many peer-reviewed journals, and he is a productive member in several committees in professional toxicology and toxicologic pathology organizations, within and outside North America. He is on the Board of Directors of the C.L. Davis-Thompson Foundation for the Advancement of Veterinary Pathology, where he served as the managing editor for its newsletter, as well as the Editor-in-Chief of the Diagnostic Exercise



## **Davis/Thompson Foundation Best Diagnostic Exercise**

### **Dr. Nicolas Streitenberger**

Diagnostic Exercise #146 “Bovine Bronchopneumonia by Bovine Respiratory Syncytial Virus (BRSV); with Secondary Bacterial Infection”

Nicolas Streitenberger obtained his DVM (2012) and PhD (2020) degrees from the National University of La Plata, Argentina. His PhD was on Bovine Respiratory Disease in feedlot cattle, with particular interest on viral infections. Nicolas is currently doing his residency in Anatomical Pathology at the California Animal Health and Food Safety- San Bernardino Laboratory, University of California, Davis, under the supervision of Dr. Francisco Uzal.

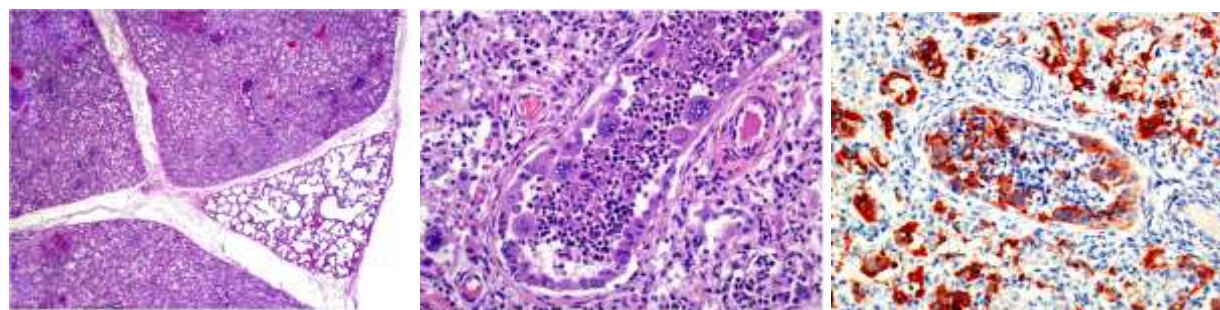


## **Diagnostic Exercise**

**From the CL Davis/ Foundation**

**Case #:146 Month: May Year 2020**

**Clinical History:** A 20-day-old female Holstein calf from a dairy farm at which four calves presented respiratory difficulty. The animal was euthanized, and a necropsy was performed.



**Morphologic Diagnosis:** Broncho-interstitial pneumonia, fibrino-suppurative, focally extensive, with necrotizing bronchiolitis, bronchiolar/alveolar epithelial syncytial cells and eosinophilic intracytoplasmic inclusion bodies.

### **Two Possible Causes:**

- i) Bovine respiratory syncytial virus (BRSV); with secondary bacterial infection (*Mannheimia haemolytica*, *Histophilus somni*, *Pasteurella multocida*, *Bibersteinia trehalosi*, *Mycoplasma bovis*).
- ii) Bovine parainfluenza virus 3 (BPV-3) with secondary bacterial infection (*Mannheimia haemolytica*, *Histophilus somni*, *Pasteurella multocida*, *Bibersteinia trehalosi*, *Mycoplasma bovis*).

**CHARLES L. DAVIS/SAMUEL L. THOMPSON, D.V.M. FOUNDATION**  
**For the**  
**ADVANCEMENT OF VETERINARY AND COMPARATIVE PATHOLOGY**  
**Annette P. Gendron-Fitzpatrick, Awards Chairperson**  
**University of Wisconsin, Emerita**  
**488 Rushmore Lane, Madison, WI 53711**  
**Phone: (608) 513-7030**  
**apgfitz@gmail.com**

November 14, 2020

Dear Dr. \_\_\_\_\_;

The Charles L. Davis/Samuel L. Thompson D.V.M. Foundation congratulates you on your selection as a Davis Foundation's Pathology Trainee and Scholarship Awardee. In addition to the plaque that you will receive from the Foundation, we are pleased to award you a year's free membership in the Davis/Thompson Foundation beginning the January after you graduate and finish your residency and/or graduate program. Until you finish your residency and/or graduate program you remain an institutional member of the Foundation with full benefits till the end of that year. Just be sure your University submits your name and email with their annual membership fees. Being a member of the Foundation not only gives you reduced registration for Foundation meetings, but also access to Foundation materials and the satisfaction of supporting pathology training in many countries, many with few of their own resources. Members are encouraged to participate in Foundation activities as volunteers, committee members, board members or Faculty of Discussants.

Please send a copy of this letter and the filled in Awardee's Foundation Application for membership (also attached) to Evelyn at the Foundation's office [cldavisdvm@comcast.net](mailto:cldavisdvm@comcast.net)

We congratulate you again on your 2020 Pathology Trainee and Scholarship Award and look forward to your continued involvement with the Foundation. When we next have an in person Awards reception, please stop by and introduce yourself. We'd enjoy meeting you.

Sincerely,

Annette Gendron-Fitzpatrick, DVM, PhD, DACVP  
Vice-president – Honors and Awards Committee  
CL Davis Foundation Board of Directors

## 14. Correspondence Division Report (Lyle)

### Training Aids Division 2020 Update

L. Tiffany Lyle,  
Purdue University  
College of Veterinary Medicine  
West Lafayette, IN

### Participant Institutions

#### Northeastern Group:

- UConn (Rachel Burns)
- St. George's University (Camila Does)

#### Southeastern Group

- Wake Forest University (Nancy Kock)
- NCSU (Sandra Horton)
- Tuskegee University (Ebony Gilbreath)
- LSU (Ingeborg Langohr)

#### "Midwestern" Group

- University of Minnesota (Jan Shivers)
- Auburn University (Jey Koehler)
- Murray State University (Johnna Veatch)

#### Western Group

- UC Davis (RM Griffey)
- UCSD (Kent Osborne)

Purdue University, the site of the Training Aids Division was closed from March-July 2020 due to the COVID-19 Global Pandemic. Dr. Tiffany Lyle was on parental leave from June-October 2020. The next 2020 slide shipment will occur in December 2020.

A participant survey will be released in December and will include the following open-ended questions:

- Please provide details on how the Davis Thompson slide sets are managed at your institution?
- When did you last receive a shipment of slides?
- Do you have a preference of body system or disease process in an upcoming shipment?
- Do you have suggestions on improving the Training Aids Division Slide Sharing Program?

**CHARLES L. DAVIS/SAMUEL L. THOMPSON,  
D.V.M. FOUNDATION  
For the  
ADVANCEMENT OF VETERINARY AND  
COMPARATIVE PATHOLOGY**



*Free One-year Membership Application Form for  
Davis Foundation's Pathology Trainee and Scholarship Awardees*

Name (First & Last Name): \_\_\_\_\_

Email Address: \_\_\_\_\_

Employer: \_\_\_\_\_

Phone Number: \_\_\_\_\_

Street Address: \_\_\_\_\_

City, State, and ZIP: \_\_\_\_\_

Membership includes the following:

- 1) 10% off tuition on the Foundation's continuing education courses.
- 2) Free copy of most recent Foundation Publication (inquire as to title).
- 3) Supporting international pathology and lab animal medicine education including over 150 international study centers at veterinary schools, outreach programs, expanding the Noah's Arkive, YouTube page content with over 125 hours of lectures, and the Foundation's virtual slide server.
- 4) You do not need to apply until the January after you have completed your residency and/ or graduate studies. You are an Institutional member until then.

Send this and your awardee's letter of entitlement either by email to Evelyn at [clavisdvm@comcast.net](mailto:clavisdvm@comcast.net) or the Davis/Thompson Foundation at 6241 Formoor Dr. Gurnee, IL 60031



**15. New Business**

**16. Adjourn**